



Bulletin 4480-B74-US

Japanese Style Fittings

Effective: November 15, 2002
Supersedes: October 1, 2002



Fittings for Japanese Machinery



Parker Safety Guide for Selecting and Using Hose, Tubing, Fittings and Related Accessories

Parker Publication No. 4400-B.1
Revised: May, 2002

WARNING: Failure or improper selection or improper use of hose, tubing, fittings, assemblies or related accessories ("Products") can cause death, personal injury and property damage. Possible consequences of failure or improper selection or improper use of these Products include but are not limited to:

- Fittings thrown off at high speed.
- High velocity fluid discharge.
- Explosion or burning of the conveyed fluid.
- Electrocution from high voltage electric powerlines.
- Contact with suddenly moving or falling objects that are controlled by the conveyed fluid.
- Injections by high-pressure fluid discharge.
- Dangerously whipping Hose.
- Contact with conveyed fluids that may be hot, cold, toxic or otherwise injurious.
- Sparking or explosion caused by static electricity buildup or other sources of electricity.
- Sparking or explosion while spraying paint or flammable liquids.
- Injuries resulting from inhalation, ingestion or exposure to fluids.

Before selecting or using any of these Products, it is important that you read and follow the instructions below. Only Hose from Parker's Stratoflex Products Division is approved for in flight aerospace applications, and no other Hose can be used for such in flight applications.

Offer of Sale

The items described in this document are hereby offered for sale by Parker Hannifin Corporation, its subsidiaries or its authorized distributors. This offer and its acceptance are governed by the provisions stated in the "Offer of Sale".

© Copyright 2002, Parker Hannifin Corporation, All Rights Reserved

Japanese Style Fittings Base Part Number with Description

Table of Contents <small>(page 1 of 2)</small>	Page Number
1FU43 Female BSP Parallel Pipe - Swivel Straight (30° Cone)	5
1GU43 Female BSP Parallel Pipe - Swivel Straight (60° Cone)	5
1K343 Standard Pressure Flange Head - 60° Elbow	6
1K543 Standard Pressure Flange Head - Straight	6
1K643 Standard Pressure Flange Head - 22 ½° Elbow	6
1K743 Standard Pressure Flange Head - 45° Elbow	7
1K943 Standard Pressure Flange Head - 90° Elbow	7
1KC43 Low Pressure Flange Head - Straight with One-Piece Captive 2 Bolt Flange	8
1KD43 Low Pressure Flange Head - 45° with One-Piece Captive 2 Bolt Flange	8
1KK43 Low Pressure Flange Head - 90° with One-Piece Captive 2 Bolt Flange	8
1KU43 Female Metric - Swivel Straight (30° Flare)	9
1MU43 Female Metric - Swivel Straight (30° Flare)	9
1XU43 Female Metric - Swivel Straight (30° Flare)	10
1UT43 Male BSP Taper Pipe - Rigid Straight (60° Cone)	10
1ZM43 Male 24° Cone Metric - Rigid Straight	11
1ZS43 Female 24° Cone Metric - Swivel Straight (with Nut and Ferrule)	11
1GU70 Female BSP Parallel Pipe - Swivel Straight (60° Cone)	11
1K570 Standard Pressure Flange Head - Straight	12
1K770 Standard Pressure Flange Head - 45° Elbow	12
1K970 Standard Pressure Flange Head - 90° Elbow	12
1KU70 Female Metric - Swivel Straight (30° Flare)	13
1ZM70 Male 24° Cone Metric - Rigid Straight	13
1ZS70 Female 24° Cone Metric - Swivel Straight (with Nut and Ferrule)	13
1Z970 Female 24° Cone Metric - Swivel - 90° Elbow (with Nut and Ferrule)	14
1FU71 Female BSP Parallel Pipe - Swivel Straight (30° Cone)	14
1GU71 Female BSP Parallel Pipe - Swivel Straight (60° Cone)	15
1K271 Standard Pressure Flange Head - 30° Elbow	15
1K371 Standard Pressure Flange Head - 60° Elbow	15
1K471 Standard Pressure Flange Head - 80° Elbow	16
1K571 Standard Pressure Flange Head - Straight	16
1K671 Standard Pressure Flange Head - 22 ½° Elbow	16
1K771 Standard Pressure Flange Head - 45° Elbow	17
1K871 Standard Pressure Flange Head - 67 ½° Elbow	17
1K971 Standard Pressure Flange Head - 90° Elbow	18
1KU71 Female Metric - Swivel Straight (30° Flare)	18
1MU71 Female Metric - Swivel Straight (30° Flare)	19
1XU71 Female Metric - Swivel Straight (30° Flare)	19
1UT71 Male BSP Taper Pipe - Rigid Straight (60° Cone)	20
1GU73 Female BSP Parallel Pipe - Swivel Straight (60° Cone)	20
1GU78 Female BSP Parallel Pipe - Swivel Straight (60° Cone)	20
1K378 Standard Pressure Flange Head - 60° Elbow	21
1K578 Standard Pressure Flange Head - Straight	21
1K678 Standard Pressure Flange Head - 22 ½° Elbow	21
1K778 Standard Pressure Flange Head - 45° Elbow	22
1K978 Standard Pressure Flange Head - 90° Elbow	22
1KA78 High Pressure Flange Head - Straight	23

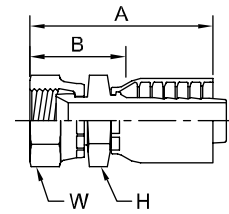
continued

+ Non-Standard

Japanese Style Fittings Base Part Number with Description

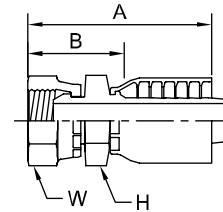
Table of Contents <small>(page 2 of 2)</small>	Page Number
1KH78 Standard Pressure Flange Head - 45° Elbow (Long)	23
1KJ78 High Pressure Flange Head - 45° Elbow (Long)	23
1KN78 High Pressure Flange Head - 90° Elbow	24
1KR78 High Pressure Flange Head - 90° Elbow (Long)	24
1KU78 Female Metric - Swivel Straight (30° Flare)	24
1ZM78 Male 24° Cone Metric - Rigid Straight	25
1ZS78 Female 24° Cone Metric - Swivel Straight (with Nut and Ferrule)	25
1Z578 Male BSP Parallel Pipe with O-Ring - Rigid Straight	25
1Z878 Female 24° Cone Metric - Swivel - 90° Elbow - Long Drop (with Nut and Ferrule)	26

**1FU43 Female BSP Parallel Pipe - Swivel
Straight (30° Flare)**



# Part Number	Thread		Hose		A		H	W	B	
	inch		inch		inch	mm	mm	mm	inch	mm
1FU43-4-4	1/4x19	-4	1/4	-4	1.97	50	19	19	1.24	31
1FU43-4-6+	1/4x19	-4	3/8	-6	2.23	57	19	19	1.30	33
1FU43-6-6	3/8x19	-6	3/8	-6	2.37	60	22	22	1.37	35
1FU43-8-8	1/2x14	-8	1/2	-8	2.72	69	27	27	1.47	37
1FU43-12-12	3/4x14	-12	3/4	-12	3.11	79	36	36	1.68	43
1FU43-16-16	1x11	-16	1	-16	3.51	89	41	41	1.92	49
1FU43-20-20	1-1/4x11	-20	1-1/4	-20	3.87	98	50	50	2.22	56
1FU43-32-32+	2X11	-32	2	-32	4.38	111	70	70	2.60	66

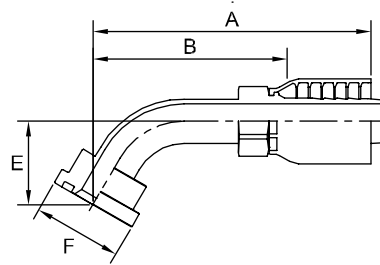
**1GU43 Female BSP Parallel Pipe -
Swivel - Straight (60° Cone)**



# Part Number	Thread		Hose		A		H	W	B	
	inch		inch		inch	mm	mm	mm	inch	mm
1GU43-2-4+	1/8x28	-2	1/4	-4	1.73	44	14	14	0.98	25
1GU43-4-4	1/4x19	-4	1/4	-4	1.77	45	19	19	1.30	33
1GU43-4-6+	1/4x19	-4	3/8	-6	2.29	58	19	19	1.29	33
1GU43-6-4+	3/8x19	-6	1/4	-4	1.85	47	22	22	1.10	28
1GU43-6-5+	3/8x19	-6	5/16	-5	1.93	49	22	22	1.18	30
1GU43-6-6	3/8x19	-6	3/8	-6	2.38	60	22	22	1.38	35
1GU43-6-8+	3/8x19	-6	1/2	-8	2.62	67	22	22	1.36	35
1GU43-8-4+	1/2x14	-8	1/4	-4	1.88	48	27	27	1.13	29
1GU43-8-6+	1/2x14	-8	3/8	-6	2.52	64	27	27	1.49	38
1GU43-8-8	1/2x14	-8	1/2	-8	2.74	70	27	27	1.49	38
1GU43-10-8+	5/8x14	-10	1/2	-8	2.86	73	30	30	1.54	39
1GU43-10-10+	5/8x14	-10	5/8	-10	2.98	76	30	30	1.56	40
1GU43-12-8+	3/4x14	-12	1/2	-8	2.98	76	36	36	1.73	44
1GU43-12-10+	3/4x14	-12	5/8	-10	3.15	80	36	36	1.74	44
1GU43-12-12	3/4x14	-12	3/4	-12	3.17	81	36	36	1.74	44
1GU43-16-12+	1x11	-16	3/4	-12	3.28	83	41	41	1.86	47
1GU43-16-16	1x11	-16	1	-16	3.59	91	41	41	2.00	51
1GU43-20-20	1-1/4x11	-20	1-1/4	-20	4.05	103	50	50	2.36	60
1GU43-32-32+	2x11	-32	2	-32	4.69	119	70	70	3.11	79

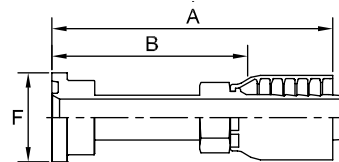
+ Non-Standard

1K343 Standard Pressure Flange Head - 60° Elbow



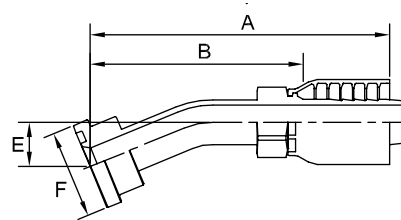
# Part Number	Flange inch		KES Flange Size	Hose inch		A		E		F inch	B	
						inch	mm	inch	mm		inch	mm
1K343-12-12	3/4	-12	6	3/4	-12	4.66	118	1.41	36	1-1/2	3.24	82

1K543 Standard Pressure Flange Head - Straight



# Part Number	Flange inch		KES Flange Size	Hose inch		A		F inch	B	
						inch	mm		inch	mm
1K543-10-10	5/8	-10	5	5/8	-10	3.78	96	1-11/32	2.34	59
1K543-12-12	3/4	-12	6	3/4	-12	3.86	98	1-1/2	2.42	61
1K543-16-12	1	-16	10	3/4	-12	4.83	123	1-3/4	3.41	87
1K543-16-16	1	-16	10	1	-16	4.25	108	1-3/4	2.63	67
1K543-20-20	1-1/4	-20	12	1-1/4	-20	4.70	119	2	3.00	76
1K543-24-24	1-1/2	-24	14	1-1/4	-24	5.47	139	2-3/8	4.10	104
1K543-32-32	2	-32	20	2	-32	5.67	144	2-13/16	3.89	99

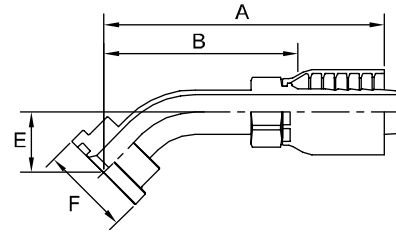
1K643 Standard Pressure Flange Head - 22½° Elbow



# Part Number	Flange inch		KES Dash Size	Hose inch		A		E		F inch	B	
						inch	mm	inch	mm		inch	mm
1K643-12-12	3/4	-12	6	3/4	-12	5.24	133	0.75	19	1-1/2	3.82	97
1K643-16-16	1	-16	10	1	-16	4.17	106	0.47	12	1-3/4	2.57	65

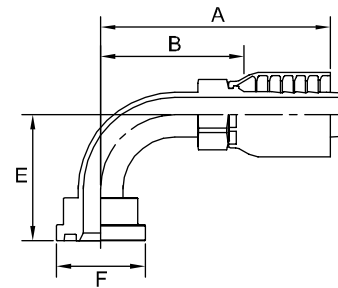
+ Non-Standard

**1K743 Standard Pressure
Flange Head - 45° Elbow**



# Part Number	Flange		KES Flange Size	Hose		A		E		F	B	
	inch			inch		inch	mm	inch	mm		inch	inch
1K743-10-10	5/8	-10	5	5/8	-10	4.69	119	1.02	26	1-11/32	3.27	83
1K743-12-12	3/4	-12	6	3/4	-12	4.70	119	1.02	26	1-1/2	3.28	83
1K743-16-16	1	-16	10	1	-16	5.06	129	1.13	29	1-3/4	3.46	88
1K743-20-20	1-1/4	-20	12	1-1/4	-20	5.58	142	1.26	32	2	3.93	100
1K743-24-24	1-1/2	-24	14	1-1/2	-24	6.02	153	1.50	38	2-3/8	4.65	118
1K743-32-32	2	-32	20	2	-32	7.54	192	2.15	55	2-13/16	6.01	153

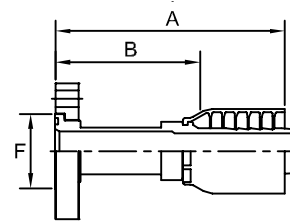
**1K943 Standard Pressure
Flange Head - 90° Elbow**



# Part Number	Flange		KES Flange Size	Hose		A		E		F	B	
	inch			inch		inch	mm	inch	mm		inch	inch
1K943-10-10	5/8	-10	5	5/8	-10	3.69	94	2.21	56	1-11/32	2.27	58
1K943-12-12	3/4	-12	6	3/4	-12	3.85	98	2.12	54	1-1/2	2.43	62
1K943-16-12	1	-16	10	3/4	-12	4.25	108	2.69	68	1-3/4	2.83	72
1K943-16-16	1	-16	10	1	-16	4.62	117	2.82	72	1-3/4	3.02	77
1K943-20-16	1-1/4	-20	12	1	-16	5.01	127	3.18	81	2	3.41	87
1K943-24-16	1-1/2	-24	14	1	-16	6.16	156	4.33	110	2-3/8	4.56	116
1K943-20-20	1-1/4	-20	12	1-1/4	-20	5.42	138	3.18	81	2	3.77	96
1K943-24-24	1-1/2	-24	14	1-1/2	-24	6.11	155	4.33	110	2-3/8	4.74	120
1K943-32-32	2	-32	20	2	-32	7.16	182	5.52	140	2-13/16	5.63	143

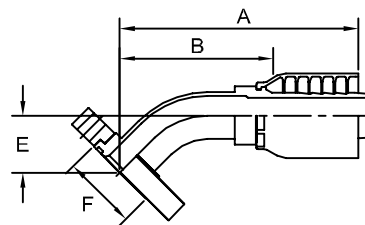
+ Non-Standard

**1KC43 Low Pressure Flange Head -
Straight with One-Piece Captive
2 Bolt Flange**



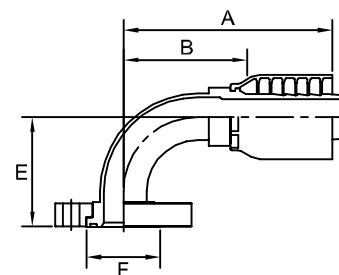
# Part Number	Flange		KES Flange Size	Hose		A		F		B	
	inch			inch		inch	mm	inch	inch	mm	
1KC43-16-16	1	-16	10	1	-16	5.21	132	1-3/4	3.61	92	
1KC43-24-24	1-1/2	-24	14	1-1/4	-24	5.92	150	2-3/8	4.60	117	

**1KD43 Low Pressure Flange Head -
45° Elbow with One-Piece Captive
2 Bolt Flange**



# Part Number	Flange		KES Flange Size	Hose		A		E		F	B	
	inch			inch		inch	mm	inch	mm		inch	inch
1KD43-24-24	1-1/2	-24	14	1-1/2	-24	5.98	152	1.50	38	2-3/8	4.66	118

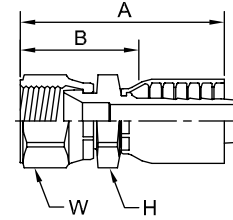
**1KK43 Low Pressure Flange Head -
90° Elbow with One-Piece Captive
2 Bolt Flange**

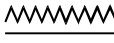



# Part Number	Flange		KES Flange Size	Hose		A		E		F	B	
	inch			inch		inch	mm	inch	mm		inch	inch
1KK43-16-16	1	-16	10	1	-16	4.71	120	2.8	71	1-3/4	3.11	79
1KK43-24-24	1-1/2	-24	14	1-1/2	-24	6.07	154	4.31	109	2-3/8	4.75	121

+ Non-Standard

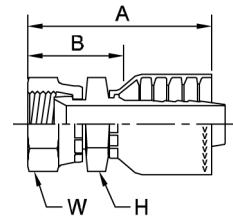
1KU43 Female Metric - Swivel Straight (30° Flare)

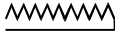



# Part Number	 Thread		 Hose		A		H	W	B	
					inch	mm	mm	mm	inch	mm
	mm	inch	inch	mm	mm	mm	mm	inch	mm	
1KU43-10-10	M24X1,5	-10	5/8	-10	3.23	82	32	32	1.80	46
1KU43-12-12	M30x1,5	-12	3/4	-12	3.38	86	36	36	1.95	50
1KU43-16-16	M33x1,5	-16	1	-16	3.93	100	41	41	2.33	59
1KU43-20-20	M36X1,5	-20	1-1/4	-20	4.15	105	46	46	2.50	64
1KU43-24-24	M42X1,5	-24	1-1/2	-24	4.07	103	55	55	2.75	70

1MU43 Female Metric - Swivel Straight (30° Flare)

Note: Japanese Fittings - Female Swivel 30° Flare with Metric Threads. Some Japanese equipment use 30° flare fittings with metric threads. The combination of the 1MU43 and 1MU71 fittings in sizes up to -8 and the 1XU43 and 1XU71 in sizes -10 and larger, all 30° flared fitting size requirements are available.

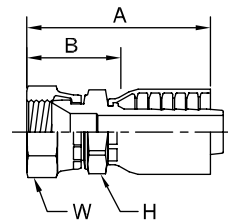


# Part Number	 Thread		 Hose		A		H	W	B	
					inch	mm	mm	mm	inch	mm
	mm	inch	inch	mm	mm	mm	mm	inch	mm	
1MU43-4-4	M14x1,5	-4	1/4	-4	2.08	53	19	19	1.12	28
1MU43-4-6+	M14x1,5	-4	3/8	-6	2.35	60	19	19	1.35	34
1MU43-4-8+	M14x1,5	-4	1/2	-8	2.56	65	22	22	1.30	33
1MU43-6-4	M18x1,5	-6	1/4	-4	2.19	56	24	24	1.46	37
1MU43-6-6	M18x1,5	-6	3/8	-6	2.32	59	24	24	1.43	36
1MU43-8-6+	M22x1,5	-8	3/8	-6	2.62	67	27	27	1.59	40
1MU43-8-8	M22x1,5	-8	1/2	-8	2.72	69	27	27	1.37	35
1MU43-8-10+	M22x1,5	-8	5/8	-10	3.03	77	27	27	1.58	40
1MU43-32-32+	M60X2	-32	2	-32	4.50	114	70	70	2.72	69

+ Non-Standard

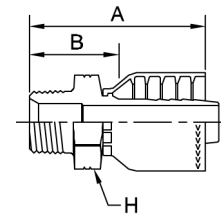
1XU43 Female Metric - Swivel Straight (30° Flare)

Note: Japanese Fittings - Female Swivel 30° Flare with Metric Threads. Some Japanese equipment use 30° flare fittings with metric threads. The combination of the 1MU43 and 1MU71 fittings in sizes up to -8 and the 1XU43 and 1XU71 in sizes -10 and larger, all 30° flared fitting size requirements are available.



# Part Number	Thread			Hose		A		H	W	B	
	mm			inch		inch	mm	mm	mm	inch	mm
	inch	mm	mm	inch	mm	inch	mm	mm	mm	inch	mm
1XU43-10-8+	5/8	M24x1.5	-10	1/2	-8	3.06	78	30	32	1.80	46
1XU43-10-10	5/8	M24x1.5	-10	5/8	-10	3.25	83	30	32	1.81	46
1XU43-10-12+	5/8	M24x1.5	-10	3/4	-12	3.27	83	32	32	1.83	46
1XU43-10-20+	5/8	M24x1.5	-10	1-1/4	-20	3.78	96	46	32	2.09	53
1XU43-12-12	3/4	M30x1.5	-12	3/4	-12	3.40	86	32	36	1.96	50
1XU43-12-16+	3/4	M30x1.5	-12	1	-16	3.89	99	36	36	2.27	58
1XU43-16-12+	1	M33x1.5	-16	3/4	-12	3.72	94	36	41	2.28	58
1XU43-16-16	1	M33x1.5	-16	1	-16	4.03	102	36	41	2.41	61
1XU43-20-12+	1-1/4	M36x1.5	-20	3/4	-12	3.87	98	46	46	2.43	62
1XU43-20-16+	1-1/4	M36x1.5	-20	1	-16	4.06	103	46	46	2.44	62
1XU43-20-20	1-1/4	M36x1.5	-20	1-1/4	-20	4.19	106	46	46	2.50	64
1XU43-24-16+	1-1/2	M42x1.5	-24	1	-16	4.41	112	50	55	2.79	71
1XU43-24-20+	1-1/2	M42x1.5	-24	1-1/4	-20	4.54	115	50	46	2.85	72
1XU43-24-24	1-1/2	M42x1.5	-24	1-1/2	-24	4.12	105	50	55	2.75	70

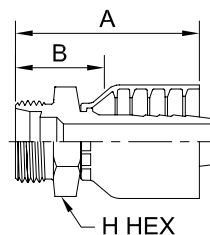
1UT43 Male BSP Taper Pipe - Rigid Straight (60° Cone)



# Part Number	Thread		Hose		A		H	B	
	inch		inch		inch	mm	mm	inch	mm
	inch	mm	inch	mm	inch	mm	mm	inch	mm
1UT43-4-4	1/4x19	-4	1/4	-4	1.93	49	19	1.18	30
1UT43-6-4+	3/8x19	-6	1/4	-4	1.99	51	22	1.24	31
1UT43-6-5+	3/8x19	-6	5/16	-5	2.07	53	22	1.32	34
1UT43-6-6	3/8x19	-6	3/8	-6	2.24	57	22	1.24	31
1UT43-6-8+	3/8x19	-6	1/2	-8	2.46	62	22	1.21	31
1UT43-8-6+	1/2x14	-8	3/8	-6	2.43	62	27	1.43	36
1UT43-8-8	1/2x14	-8	1/2	-8	2.68	68	27	1.43	36
1UT43-8-10+	1/2x14	-8	5/8	-10	2.84	72	27	1.44	37
1UT43-8-12+	1/2x14	-8	3/4	-12	2.98	76	27	1.54	39
1UT43-12-8+	3/4x14	-12	1/2	-8	2.77	70	36	1.52	39
1UT43-12-10+	3/4x14	-12	5/8	-10	2.94	75	36	1.54	39
1UT43-12-12	3/4x14	-12	3/4	-12	2.96	75	36	1.53	39
1UT43-12-16+	3/4x14	-12	1	-16	3.27	83	36	1.67	42
1UT43-16-12+	1x11	-16	3/4	-12	3.15	80	41	1.73	44
1UT43-16-16	1x11	-16	1	-16	3.46	88	41	1.87	47
1UT43-16-20+	1x11	-16	1-1/4	-20	3.59	91	50	1.90	48
1UT43-20-20	1-1/4x11	-20	1-1/4	-20	3.75	95	50	2.10	53
1UT43-20-24+	1-1/4x11	-20	1-1/2	-24	3.36	85	50	1.99	51

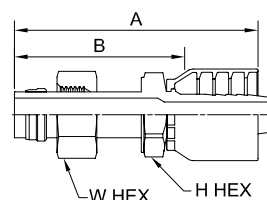
+ Non-Standard

1ZM43 Male 24° Cone Metric - Rigid - Straight



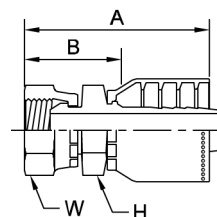
# Part Number	Thread			Hose		A		H	B	
	mm	mm	mm	inch	inch	inch	mm	mm	inch	mm
1ZM43-15-6	15	M22 x 1.5	-15	3/8	-6	2.15	55	24	1.12	28
1ZM43-18-8	18	M26 x 1.5	-18	1/2	-8	2.35	60	27	1.09	28
1ZM43-22-10	22	M30 x 1.5	-22	5/8	-10	2.66	68	36	1.22	31

1ZS43 Female 24° Cone Metric - Swivel - Straight (with Nut and Ferrule)



# Part Number	Thread			Hose		A		H	W	B	
	mm	mm	mm	inch	inch	inch	mm	mm	mm	inch	mm
1ZS43-10-4	10	M16 x 1.5	-10	1/4	-4	3.19	81	17	19	2.44	62
1ZS43-15-6	15	M22 X 1.5	-15	3/8	-6	2.15	55	24	27	1.12	28

1GU70 Female BSP Parallel Pipe - Swivel - Straight (60° Cone)

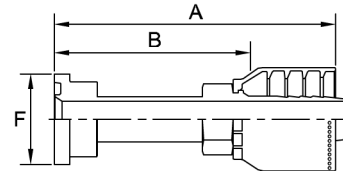


^ Must use Parkrimp 2 or Superkrimp and Die Part No. 83C-D20H.

# Part Number	Thread			Hose		A		H	W	B	
	inch	inch	inch	inch	inch	inch	mm	mm	mm	inch	mm
1GU70-6-6	3/8x19	-6	3/8	-6	2.40	61	22	22	22	1.51	38
1GU70-8-8	1/2x14	-8	1/2	-8	2.72	69	27	27	27	1.52	39
1GU70-12-12	3/4x14	-12	3/4	-12	3.19	81	36	36	36	1.81	46
1GU70-20-20^+	1-1/4x11	-20	1-1/4	-20	4.05	103	50	50	50	2.36	60
1GU70-24-24^+	1-1/2x11	-24	1-1/2	-24	4.49	114	60	60	60	2.51	64

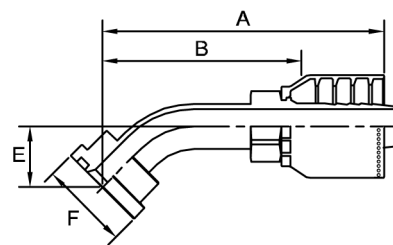
+ Non-Standard

1K570 Standard Pressure Flange Head - Straight



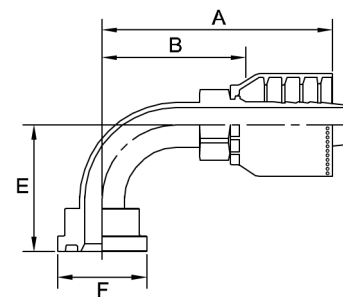
# Part Number	Flange		KES Flange Size	Hose		A		F		B	
	inch	-10		inch	-10	inch	mm	inch	inch	mm	
1K570-10-10	5/8	-10	5	5/8	-10	3.69	94	1-11/32	2.44	62	

1K770 Standard Pressure Flange Head - 45° Elbow



# Part Number	Flange		KES Flange Size	Hose		A		E		F		B	
	inch	-10		inch	-10	inch	mm	inch	mm	inch	inch	mm	
1K770-10-10	5/8	-10	5	5/8	-10	4.62	117	1.02	26	1-11/32	3.37	86	

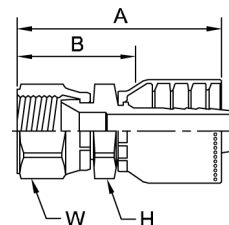
1K970 Standard Pressure Flange Head - 90° Elbow



# Part Number	Flange		KES Flange Size	Hose		A		E		F		B	
	inch	-10		inch	-10	inch	mm	inch	mm	inch	inch	mm	
1K970-10-10	5/8	-10	5	5/8	-10	3.61	92	2.21	56	1-11/32	2.37	60	

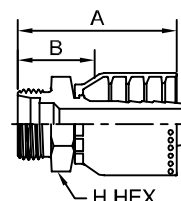
+ Non-Standard

**1KU70 Female Metric - Swivel
Straight (30° Flare)**



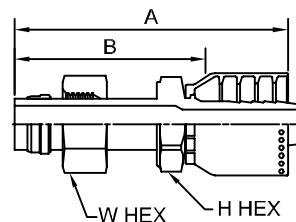
# Part Number	Thread		Hose		A		H	W	B	
	mm		inch		inch	mm	mm	mm	inch	mm
1KU70-10-10	M24X1,5	-10	5/8	-10	3.15	80	32	32	1.90	48

**1ZM70 Male 24° Cone Metric - Rigid -
Straight**



# Part Number	Thread			Hose		A		H	B	
	mm			inch		inch	mm	mm	inch	mm
1ZM70-22-10	22	M30 x 1.5	-22	5/8	-10	2.57	65	36	1.32	34

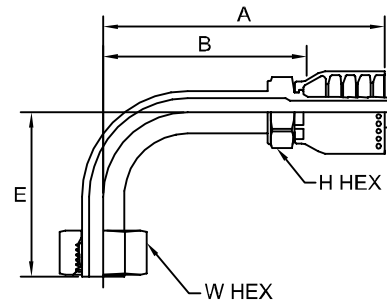
**1ZS70 Female 24° Cone Metric -
Swivel - Straight (with Nut and
Ferrule)**



# Part Number	Thread			Hose		A		H	W	B	
	mm			inch		inch	mm	mm	mm	inch	mm
1ZS70-18-8	18	M26 x 1.5	-18	1/2	-8	4.36	111	27	32	3.15	80
1ZS70-22-10	22	M30 x 1.5	-22	5/8	-10	4.49	114	36	36	3.24	82

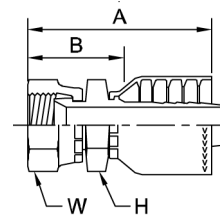
+ Non-Standard

1Z970 Female 24° Cone Metric - Swivel - 90° Elbow (with Nut and Ferrule)



# Part Number	Thread			Hose		A		E		H	W	B	
	18	M26 x 1.5	-18	1/2	-8	inch	mm	inch	mm	mm	mm	inch	mm
	mm			inch		inch		mm		mm		mm	
1Z970-18-8	18	M26 x 1.5	-18	1/2	-8	4.74	120	2.76	70	27	32	3.53	90
1Z970-22-10	22	M30 x 1.5	-22	5/8	-10	4.88	124	2.76	70	36	36	3.63	92

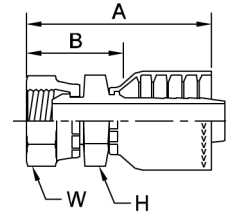
1FU71 Female BSP Parallel Pipe - Swivel Straight (30° Flare)



# Part Number	Thread		Hose		A		H	W	B	
	inch	inch	inch	inch	inch	mm	mm	mm	inch	mm
	inch		inch		inch		mm		mm	
1FU71-6-6	3/8x19	-6	3/8	-6	2.39	61	24	22	1.50	38
1FU71-8-8	1/2x14	-8	1/2	-8	2.71	69	27	27	1.51	38
1FU71-12-12	3/4x14	-12	3/4	-12	3.10	79	36	36	1.74	44
1FU71-16-16	1x11	-16	1	-16	3.52	89	41	41	1.93	49
1FU71-20-20	1-1/4x11	-20	1-1/4	-20	3.87	98	50	50	2.20	56
1FU71-24-24	1-1/2x11	-24	1-1/2	-24	4.66	118	60	60	2.53	64

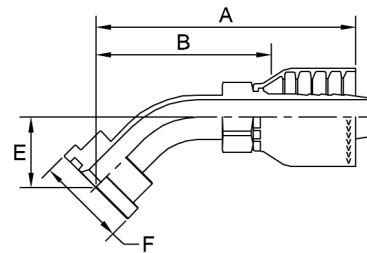
+ Non-Standard

1GU71 Female BSP Parallel Pipe - Swivel Straight (60° Cone)



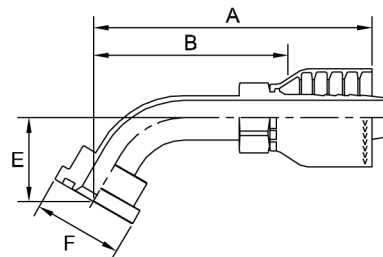
# Part Number	Thread		Hose		A		H	W	B	
	inch		inch		inch	mm	mm	mm	inch	mm
1GU71-6-6	3/8x19	-6	3/8	-6	2.40	61	22	22	1.51	38
1GU71-8-8	1/2x14	-8	1/2	-8	2.72	69	27	27	1.52	39
1GU71-12-12	3/4x14	-12	3/4	-12	3.16	80	36	36	1.80	46
1GU71-16-16	1x11	-16	1	-16	3.60	91	41	41	2.01	51
1GU71-20-20	1-1/4x11	-20	1-1/4	-20	4.05	103	50	50	2.36	60
1GU71-24-24	1-1/2x11	-24	1-1/2	-24	4.67	119	60	60	2.54	65
1GU71-32-32	2x11	-32	2	-32	5.60	142	70	70	3.45	88

1K271 Standard Pressure Flange Head - 30° Elbow



# Part Number	Flange		KES Flange Size	Hose		A		E		F	B	
	inch			inch	inch	inch	mm	inch	mm	inch	inch	mm
1K271-16-16	1	-16	10	1	-16	4.66	118	0.75	19	1-3/4	3.01	76

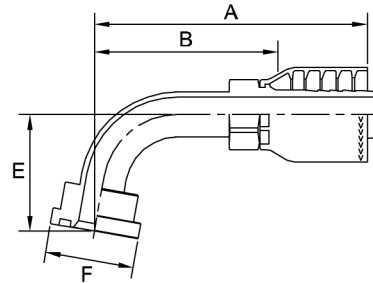
1K371 Standard Pressure Flange Head - 60° Elbow



# Part Number	Flange		KES Flange Size	Hose		A		E		F	B	
	inch			inch	inch	inch	mm	inch	mm	inch	inch	mm
1K371-20-20	1-1/4	-20	12	1-1/4	-20	6.13	156	1.97	50	2	4.46	113
1K371-32-32	2	-32	20	2	-32	9.2	234	3.76	96	2-13/16	7.07	180

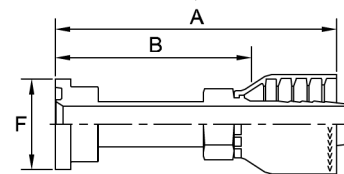
+ Non-Standard

1K471 Standard Pressure Flange Head - 80° Elbow



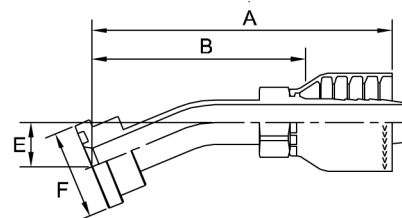
# Part Number	Flange		KES Flange Size	Hose		A		E		F		B	
	inch			inch		inch	mm	inch	mm	inch	inch	mm	
1K471-16-16	1	-16	10	1	-16	5.07	129	2.50	64	1-3/4	3.42	87	

1K571 Standard Pressure Flange Head - Straight



# Part Number	Flange		KES Flange Size	Hose		A		F	B	
	inch			inch		inch	mm	inch	inch	mm
1K571-10-10	5/8	-10	5	5/8	-10	3.69	94	1-11/32	2.44	62
1K571-12-12	3/4	-12	6	3/4	-12	3.86	98	1-1/2	2.48	63
1K571-16-12	1	-16	10	3/4	-12	4.84	123	1-3/4	3.47	88
1K571-16-16	1	-16	10	1	-16	4.32	110	1-3/4	2.55	65
1K571-20-16	1-1/4	-20	12	1	-16	5.24	133	2	3.59	91
1K571-20-20	1-1/4	-20	12	1-1/4	-20	4.70	119	2	3.01	76
1K571-24-24	1-1/2	-24	14	1-1/4	-24	5.47	139	2-3/8	3.28	83
1K571-32-32	2	-32	20	2	-32	5.65	144	2-13/16	3.45	88

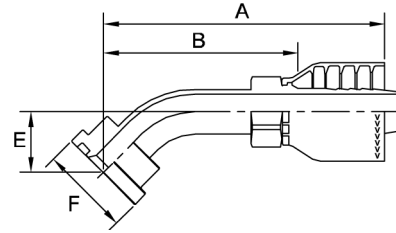
1K671 Standard Pressure Flange Head - 22½° Elbow



# Part Number	Flange		KES Dash Size	Hose		A		E		F		B	
	inch			inch		inch	mm	inch	mm	inch	inch	mm	
1K671-12-12	3/4	-12	6	3/4	-12	5.24	133	0.75	19	1-1/2	3.88	99	
1K671-16-16	1	-16	10	1	-16	4.24	108	0.47	12	1-3/4	2.59	66	

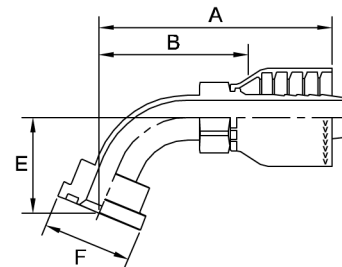
+ Non-Standard

**1K771 Standard Pressure
Flange Head - 45° Elbow**



# Part Number	Flange		KES Flange Size	Hose		A		E		F	B	
	inch			inch		inch	mm	inch	mm		inch	inch
1K771-10-10	5/8	-10	5	5/8	-10	4.69	119	1.02	26	1-11/32	3.37	86
1K771-12-12	3/4	-12	6	3/4	-12	4.71	120	1.02	26	1-1/2	3.34	85
1K771-16-12	1	-16	10	1	-12	4.84	123	1.10	28	1-3/4	3.41	87
1K771-16-16	1	-16	10	1	-16	5.13	130	1.13	29	1-3/4	3.48	88
1K771-20-16	1-1/4	-20	12	1	-16	5.23	133	1.26	32	2	3.58	91
1K771-20-20	1-1/4	-20	12	1-1/4	-20	5.6	142	1.26	32	2	3.93	100
1K771-24-24	1-1/2	-24	14	1-1/2	-24	6.68	170	1.50	38	2-3/8	4.55	116
1K771-32-32	2	-32	20	2	-32	8.22	209	2.15	55	2-13/16	6.09	155

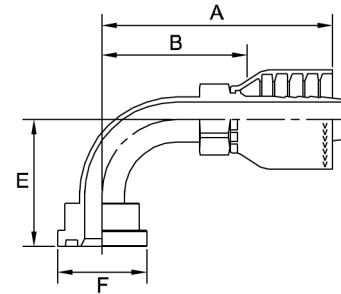
**1K871 Standard Pressure
Flange Head - 67½° Elbow**



# Part Number	Flange		KES Flange Size	Hose		A		E		F	B	
	inch			inch		inch	mm	inch	mm		inch	inch
1K871-12-12	3/4	-12	6	3/4	-12	3.93	100	1.61	41	1-1/2	2.54	65
1K871-16-16	1	-16	10	1	-16	5.41	137	2.36	60	1-3/4	3.76	96
1K871-20-20	1-1/4	-20	12	1-1/4	-20	6.41	163	2.95	75	2	4.74	120

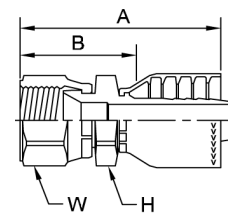
+ Non-Standard

**1K971 Standard Pressure
Flange Head - 90° Elbow**



# Part Number	Flange		KES Flange Size	Hose		A		E		F	B	
	inch			inch		inch	mm	inch	mm		inch	mm
1K971-10-10	5/8	-10	5	5/8	-10	3.61	92	2.21	56	1-11/32	2.37	60
1K971-12-12	3/4	-12	6	3/4	-12	3.86	98	2.12	54	1-1/2	2.49	63
1K971-16-12	1	-16	10	3/4	-12	4.26	108	2.69	68	1-3/4	2.89	73
1K971-16-16	1	-16	10	1	-16	4.69	119	2.82	72	1-3/4	3.04	77
1K971-20-16	1-1/4	-20	12	1	-16	5.08	129	3.18	81	2	3.43	87
1K971-20-20	1-1/4	-20	12	1-1/4	-20	5.44	138	3.18	81	2	3.77	96
1K971-24-20	1-1/2	-24	14	1-1/4	-20	5.91	150	4.33	110	2-3/8	4.24	108
1K971-24-24	1-1/2	-24	14	1-1/2	-24	6.77	172	4.32	110	2-3/8	4.64	118
1K971-32-32	2	-32	20	2	-32	7.84	199	5.52	140	2-13/16	5.71	145

**1KU71 Female Metric - Swivel
Straight (30° Flare)**

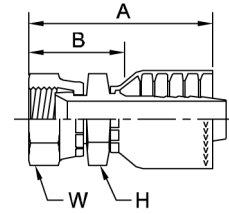


# Part Number	Thread		Hose		A		H	W	B	
	mm		inch		inch	mm	mm	mm	inch	mm
1KU71-10-10	M24X1,5	-10	5/8	-10	3.15	80	32	32	1.90	48
1KU71-12-12	M30x1,5	-12	3/4	-12	3.39	86	36	36	2.02	51
1KU71-16-16	M33x1,5	-16	1	-16	4.00	102	41	41	2.35	60
1KU71-20-20	M36X1,5	-20	1-1/4	-20	4.17	106	46	46	2.50	64
1KU71-24-24	M42X1,5	-24	1-1/2	-24	4.94	125	55	55	2.81	71

+ Non-Standard

1MU71 Female Metric - Swivel Straight (30° Flare)

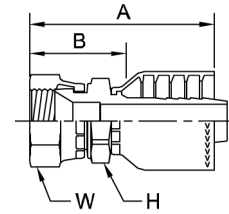
Note: Japanese Fittings - Female Swivel 30° Flare with Metric Threads. Some Japanese equipment use 30° flare fittings with metric threads. In combination with the 1MU43 and 1MU71 fittings in sizes up to -8, and the 1XU43 and 1XU71 in sizes -10 and larger, all 30° flared fitting size requirements are available.



# Part Number	Thread		Hose		A		H	W	B	
	mm		inch		inch	mm	mm	mm	inch	mm
1MU71-6-6	M18x1,5	-6	3/8	-6	2.45	62	24	22	1.56	40
1MU71-8-8	M22x1,5	-8	1/2	-8	2.83	72	27	27	1.45	37

1XU71 Female Metric - Swivel Straight (30° Flare)

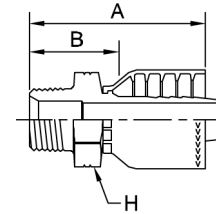
Note: Japanese Fittings - Female Swivel 30° Flare with Metric Threads. Some Japanese equipment use 30° flare fittings with metric threads. In combination with the 1MU43 and 1MU71 fittings in sizes up to -8, and the 1XU43 and 1XU71 in sizes -10 and larger, all 30° flared fitting size requirements are available.



# Part Number	Thread		Hose		A		H	W	B		
	mm		inch		inch	mm	mm	mm	inch	mm	
1XU71-10-8+	5/8	M24x1.5	-10	1/2	-8	3.06	78	30	32	1.85	47
1XU71-10-10	5/8	M24x1.5	-10	5/8	-10	3.16	80	30	32	1.91	49
1XU71-10-12+	5/8	M24x1.5	-10	3/4	-12	3.27	83	32	32	1.89	48
1XU71-12-12	3/4	M30x1.5	-12	3/4	-12	3.40	86	32	36	2.02	51
1XU71-12-16+	3/4	M30x1.5	-12	1	-16	3.97	101	36	36	2.19	56
1XU71-16-16	1	M33x1.5	-16	1	-16	4.11	104	36	41	2.33	59
1XU71-20-20	1-1/4	M36x1.5	-20	1-1/4	-20	4.19	106	46	46	2.50	64
1XU71-24-24	1-1/2	M42x1.5	-24	1-1/2	-24	5.00	127	50	55	2.80	71

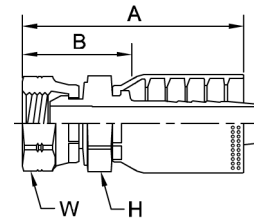
+ Non-Standard

**1UT71 Male BSP Taper Pipe - Rigid
Straight (60° Cone)**



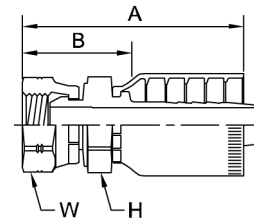
# Part Number	Thread		Hose		A		H	B	
	inch		inch		inch	mm	mm	inch	mm
1UT71-6-6	3/8x19	-6	3/8	-6	2.25	57	22	1.36	35
1UT71-8-8	1/2x14	-8	1/2	-8	2.66	68	27	1.46	37
1UT71-12-12	3/4x14	-12	3/4	-12	2.95	75	36	1.59	40
1UT71-16-16	1x11	-16	1	-16	3.47	88	41	1.88	48
1UT71-20-20	1-1/4x11	-20	1-1/4	-20	3.75	95	50	2.08	53
1UT71-24-24	1-1/2x11	-24	1-1/2	-24	4.42	112	60	2.23	57

**1GU73 Female BSP Parallel Pipe - Swivel
Straight (60° Cone)**



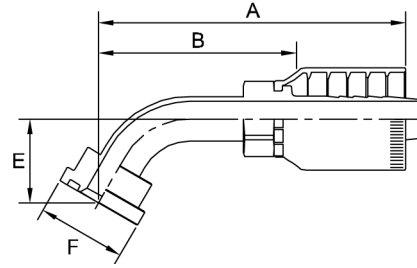
# Part Number	Thread		Hose		A		H	W	B	
	inch		inch		inch	mm	mm	mm	inch	mm
1GU73-12-12	3/4x14	-12	3/4	-12	3.71	94	36	36	1.90	48
1GU73-16-16	1x11	-16	1	-16	4.00	102	41	41	2.07	53
1GU73-20-20+	1-1/4x11	-20	1-1/4	-20	4.95	126	50	50	2.46	62
1GU73-24-24+	1-1/2	-24	1-1/2	-24	5.19	132	60	60	2.88	73
1GU73-32-32+	2	-32	2	-20	5.54	141	70	70	2.84	72

**1GU78 Female BSP Parallel Pipe - Swivel
Straight (60° Cone)**



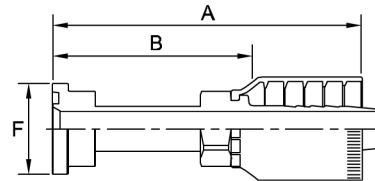
# Part Number	Thread		Hose		A		H	W	B	
	inch		inch		inch	mm	mm	mm	inch	mm
1GU78-12-12	3/4x14	-12	3/4	-12	3.71	94	36	36	1.95	50
1GU78-16-16	1x11	-16	1	-16	4.00	102	41	41	2.16	55
1GU78-20-20+	1-1/4x11	-20	1-1/4	-20	4.95	126	50	50	2.56	65
1GU78-24-24+	1-1/2	-24	1-1/2	-24	5.19	132	60	60	2.98	76
1GU78-32-32+ Non-Standard	2	-32	2	-32	5.54	141	70	70	2.97	75

**1K378 Standard Pressure
Flange Head - 60° Elbow**



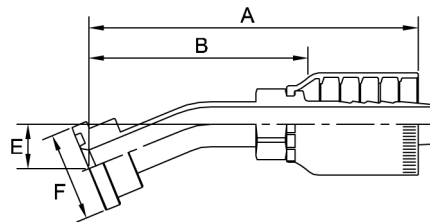
# Part Number	Flange inch		KES Flange Size	Hose inch		A		E		F inch	B	
						inch	mm	inch	mm		inch	mm
1K378-12-12	3/4	-12	6	3/4	-12	5.16	131	1.41	36	1-1/2	3.40	86

**1K578 Standard Pressure
Flange Head - Straight**



# Part Number	Flange inch		KES Flange Size	Hose inch		A		F inch	B	
						inch	mm		inch	mm
1K578-12-12	3/4	-12	6	3/4	-12	4.34	110	1-1/2	2.58	66
1K578-16-16	1	-16	10	1	-16	4.59	117	1-3/4	2.74	70
1K578-20-20	1-1/4	-20	12	1-1/4	-20	5.54	141	2	3.15	80
1K578-24-24	1-1/2	-24	14	1-1/4	-24	6.53	166	2-3/8	4.32	110
1K578-32-32	2	-32	20	2	-32	6.14	156	2-13/16	3.57	91

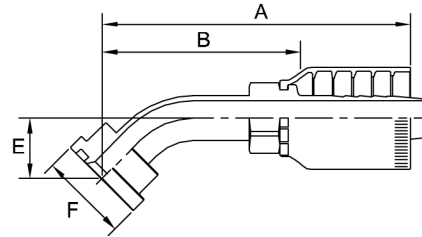
**1K678 Standard Pressure
Flange Head - 22½° Elbow**



# Part Number	Flange inch		KES Dash Size	Hose inch		A		E		F inch	B	
						inch	mm	inch	mm		inch	mm
1K678-24-24	1-1/2	-24	14	1-1/2	-24	7.12	181	0.76	19	2-3/8	4.94	125

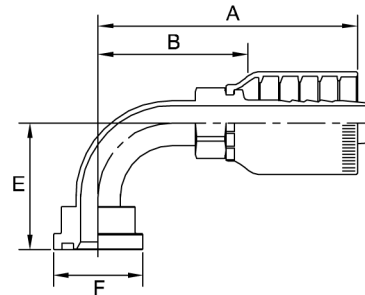
+ Non-Standard

**1K778 Standard Pressure
Flange Head - 45° Elbow**



# Part Number	Flange		KES Flange Size	Hose		A		E		F	B	
	inch			inch		inch	mm	inch	mm		inch	mm
1K778-12-12	3/4	-12	6	3/4	-12	5.15	131	1.02	26	1-1/2	3.44	87
1K778-20-20	1-1/4	-20	12	1-1/4	-20	6.39	162	1.26	32	2	4.03	102
1K778-24-24	1-1/2	-24	14	1-1/2	-24	7.01	178	1.50	38	2-3/8	4.83	123
1K778-32-32	2	-32	20	2	-32	8.88	226	2.16	55	2-13/16	6.33	161

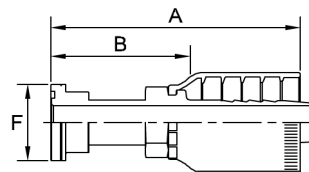
**1K978 Standard Pressure
Flange Head - 90° Elbow**



# Part Number	Flange		KES Flange Size	Hose		A		E		F	B	
	inch			inch		inch	mm	inch	mm		inch	mm
1K978-12-12	3/4	-12	6	3/4	-12	4.30	109	2.12	54	1-1/2	2.59	66
1K978-16-16	1	-16	10	1	-16	4.98	126	2.81	71	1-3/4	3.19	81
1K978-20-20	1-1/4	-20	12	1-1/4	-20	6.23	158	3.18	81	2	3.87	98
1K978-24-24	1-1/2	-24	14	1-1/2	-24	7.10	180	4.32	110	2-3/8	4.92	125
1K978-32-32	2	-32	20	2	-32	8.49	216	5.52	140	2-13/16	5.94	151

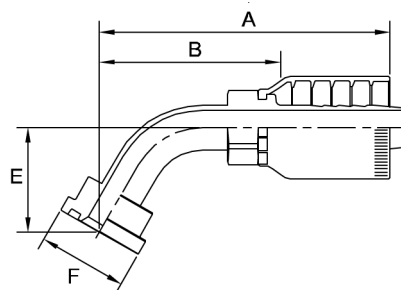
+ Non-Standard

1KA78 High Pressure Flange Head - Straight



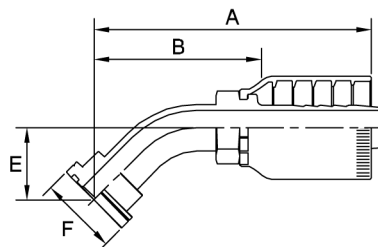
# Part Number	Flange		KES Flange Size	Hose		A		F		B	
	inch			inch		inch	mm	inch	inch	mm	
1KA78-20-16	1-1/4	-20	12	1	-16	5.83	148	2-1/8	4.04	103	
1KA78-20-20	1-1/4	-20	12	1-1/4	-20	5.85	149	2-1/8	3.46	88	
1KA78-24-24	1-1/2	-24	14	1-1/4	-24	6.54	166	2-1/2	4.33	110	
1KA78-32-32	2	-32	20	2	-32	8.94	227	3-1/8	6.39	162	

1KH78 Standard Pressure Flange Head - 45° Elbow (Long)



# Part Number	Flange		KES Flange Size	Hose		A		E		F	B	
	inch			inch		inch	mm	inch	mm		inch	mm
1KH78-16-16	1	-16	10	1	-16	5.52	140	1.28	33	1-3/4	3.73	95
1KH78-20-20	1-1/4	-20	12	1-1/4	-20	6.40	163	1.50	38	2	4.04	103

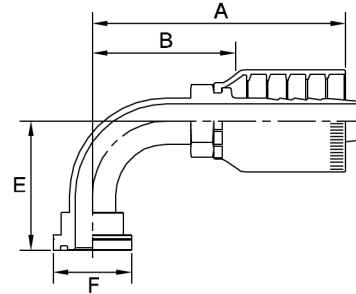
1KJ78 High Pressure Flange Head - 45° Elbow (Long)



# Part Number	Flange		KES Flange Size	Hose		A		E		F	B	
	inch			inch		inch	mm	inch	mm		inch	mm
1KJ78-20-20	1-1/4	-20	12	1-1/4	-20	6.39	162	1.49	38	2-1/8	4.03	102
1KJ78-24-24	1-1/2	-24	14	1-1/2	-24	7.12	181	1.80	46	2-1/2	4.94	125
1KJ78-32-32	2	-32	20	2	-32	8.88	226	2.55	65	3-1/8	6.33	161

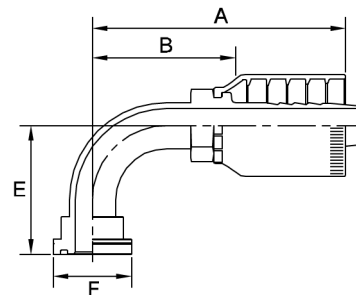
+ Non-Standard

1KN78 High Pressure Flange Head - 90° Elbow



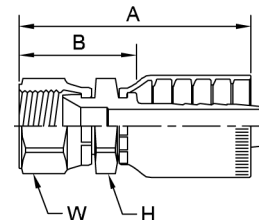
# Part Number	Flange		KES Flange Size	Hose		A		E		F		B	
	inch			inch		inch	mm	inch	mm	inch	inch	mm	
1KN78-20-20	1-1/4	-20	12	1-1/4	-20	6.72	171	3.18	81	2-1/8	4.36	111	
1KN78-24-24	1-1/2	-24	14	1-1/2	-24	7.10	180	4.35	110	2-1/2	4.92	125	
1KN78-32-32	2	-32	20	2	-32	8.76	223	5.43	138	3-1/8	6.21	158	

1KR78 High Pressure Flange Head - 90° Elbow (Long)



# Part Number	Flange		KES Flange Size	Hose		A		E		F		B	
	inch			inch		inch	mm	inch	mm	inch	inch	mm	
1KR78-20-20	1-1/4	-20	12	1-1/4	-20	6.34	161	3.64	92	2-1/8	3.97	101	

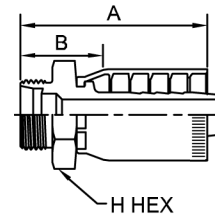
1KU78 Female Metric - Swivel Straight (30° Flare)



# Part Number	Thread		Hose		A		H	W	B	
	mm		inch		inch	mm	mm	mm	inch	mm
1KU78-12-12	M30x1,5	-12	3/4	-12	3.88	99	36	36	2.12	54

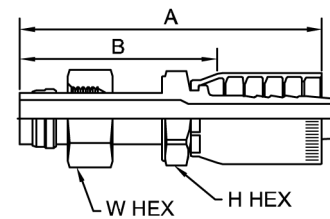
+ Non-Standard

1ZM78 Male 24° Cone Metric - Rigid - Straight



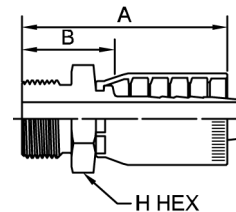
# Part Number	Thread			Hose		A		H	B	
	mm			inch		inch	mm	mm	inch	mm
	1ZM78-22-12	22	M30 x 1.5	-22	3/4	-12	3.14	80	36	1.38
1ZM78-28-12	28	M36 x 1.5	-28	3/4	-12	3.40	86	41	1.64	42
1ZM78-28-16	28	M36 x 1.5	-28	1	-16	3.57	91	41	1.72	44
1ZM78-35-12	35	M45 x 1.5	-35	3/4	-12	3.48	88	50	1.78	45
1ZM78-35-16	35	M45 x 1.5	-35	1	-16	3.52	89	50	1.67	42

1ZS78 Female 24° Cone Metric - Swivel - Straight (with Nut and Ferrule)



# Part Number	Thread			Hose		A		H	W	B	
	mm			inch		inch	mm	mm	mm	inch	mm
	1ZS78-28-12	28	M36 x 1.5	-28	3/4	-12	5.22	133	36	41	3.46

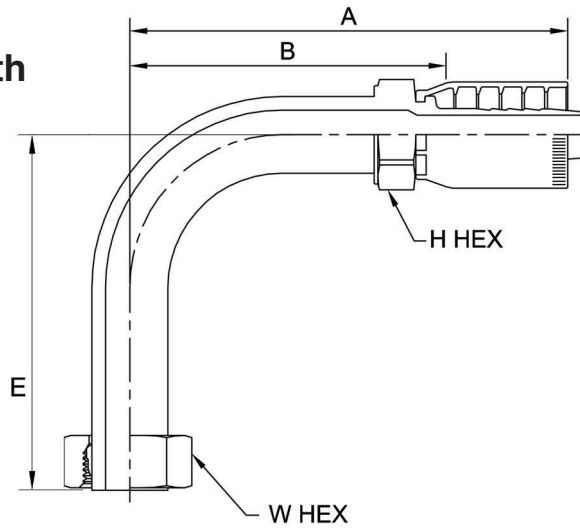
1Z578 Male BSP Parallel Pipe with O-Ring - Rigid Straight



# Part Number	Thread			Hose		A		H	B	
	inch			inch		inch	mm	mm	inch	mm
	1Z578-16-12	16	PF1-A	-16	3/4	-12	3.44	87	41	1.68
1Z578-16-16	16	PF1-A	-16	1	-16	3.77	96	41	1.92	49

+ Non-Standard

**1Z878 Female 24° Cone Metric -
Swivel - 90° Elbow - Long Drop (with
Nut and Ferrule)**



# Part Number	Thread			Hose		A		E		H	W	B	
	mm			inch		inch	mm	inch	mm	mm	mm	inch	mm
	28	M36 x 1.5	-28	3/4	-12	6.34	161	5.12	130	36	41	4.58	116
1Z878-28-12	28	M36 x 1.5	-28	3/4	-12	6.34	161	5.12	130	36	41	4.58	116

+ Non-Standard

The items described in this document and other documents or descriptions provided by Parker Hannifin Corporation, as subsidiaries and its authorized distributors are hereby offered for sale at prices to be established by Parker Hannifin Corporation, its subsidiaries and its authorized distributors. This offer and its acceptance by any customer ("Buyer") shall be governed by all of the following Terms and Conditions. Buyer's order for any such item, when communicated to Parker Hannifin Corporation, its subsidiary or an authorized distributor ("Seller") verbally or in writing, shall constitute acceptance of this offer.

1. Terms and Conditions of Sale: All descriptions, quotations, proposals, offers, acknowledgments, acceptances and sales of Seller's products are subject to and shall be governed exclusively by the terms and conditions stated herein. Buyer's acceptance of any offer to sell is limited to these terms and conditions. Any terms or conditions in addition to, or inconsistent with those stated herein, proposed by Buyer in any acceptance of an offer by Seller, are hereby objected to. No such additional, different or inconsistent terms and conditions shall become part of the contract between Buyer and Seller unless expressly accepted in writing by Seller. Seller's acceptance of any offer to purchase by Buyer is expressly conditional upon Buyer's assent to all the terms and conditions stated herein, including any terms in addition to, or inconsistent with those contained in Buyer's offer. Acceptance of Seller's products shall in all events constitute such assent.

2. Payment: Payment shall be made by Buyer net 30 days from the date of delivery of the items purchased hereunder. Any claims by Buyer for omissions or shortages in a shipment shall be waived unless Seller receives notice thereof within 30 days after Buyer's receipt of the shipment.

3. Delivery: Unless otherwise provided on the face hereof, delivery shall be made F.O.B. Seller's plant. Regardless of the method of delivery, however, risk of loss shall pass to Buyer upon Seller's delivery to a carrier. Any delivery dates shown are approximate only and Seller shall have no liability for any delays in delivery.

4. Warranty: Seller warrants that the items sold thereunder shall be free from defects in material or workmanship for a period of 365 days from the date of shipment to Buyer, or 2,000 hours of use, whichever expires first. **THIS WARRANTY COMPRISES THE SOLE AND ENTIRE WARRANTY PERTAINING TO ITEMS PROVIDED HEREUNDER. SELLER MAKES NO OTHER WARRANTY, GAURANTEE, OR REPRESENTATION OF ANY KIND WHATSOEVER. ALL OTHER WARRANTIES, INCLUDING BUT NOT LIMITED TO, MERCHANTABILITY AND FITNESS FOR PURPOSE, WHETHER EXPRESS, IMPLIED, OR ARISING BY OPERATION OF LAW, TRADE USAGE, OR COURSE OF DEALING ARE HEREBY DISCLAIMED.**
NOTWITHSTANDING THE FOREGOING, THERE ARE NO WARRANTIES WHATSOEVER ON ITEMS BUILT OR ACQUIRED WHOLELY OR PARTIALLY, TO BUYER'S DESIGNS OR SPECIFICATIONS.

5. Limitation Of Remedy: SELLER'S LIABILITY ARISING FROM OR IN ANY WAY CONNECTED WITH THE ITEMS SOLD OR THIS CONTRACT SHALL BE LIMITED EXCLUSIVELY TO REPAIR OR REPLACEMENT OF THE ITEMS SOLD OR REFUND OF THE PURCHASE PRICE PAID BY BUYER, AT SELLER'S SOLE OPTION. IN NO EVENT SHALL SELLER BE LIABLE FOR ANY INCIDENTAL, CONSEQUENTIAL OR SPECIAL DAMAGES OF ANY KIND OR NATURE WHATSOEVER, INCLUDING BUT NOT LIMITED TO LOST PROFITS ARISING FROM OR IN ANY WAY CONNECTED WITH THIS AGREEMENT OR ITEMS SOLD HEREUNDER, WHETHER ALLEGED TO ARISE FROM BREACH OF CONTRACT, EXPRESS OR IMPLIED WARRANTY, OR IN TORT, INCLUDING WITHOUT LIMITATION, NEGLIGENCE, FAILURE TO WARN OR STRICT LIABILITY.

6. Changes, Reschedules and Cancellations: Buyer may request to modify the designs or specifications for the items sold herunder as well as the quantities and delivery dates thereof, or may request to cancel all or part of this order, however, no such requested modification or cancellation shall become part of the contract between Buyer and Seller unless accepted by Seller in a written amendment to this Agreement. Acceptance of any such requested modification or cancellation shall be at Seller's discretion, and shall be upon such terms and conditions as Seller may require.

7. Special Tooling: A tooling charge may be imposed for any special tooling, including without limitation, dies, fixtures, molds and patterns, acquired to manufacture items sold pursuant to this contract. Such special tooling shall be and remain Seller's property notwithstanding payment of any charges by Buyer. In no event will Buyer acquire any interest in apparatus belonging to Seller which is utilized in the manufacture of the items sold hereunder, even if such apparatus has been specially

converted or adapted for such manufacture and notwithstanding any charges paid by Buyer. Unless otherwise agreed, Seller shall have the right to alter, discard or otherwise dispose of any special tooling or other property in its sole discretion at any time.

8. Buyer's Property: Any designs, tools, patterns, materials, drawings, confidential information or equipment furnished by Buyer or any other items which become Buyer's property, may be considered obsolete and may be destroyed by Seller after two (2) consecutive years have elapsed without Buyer placing an order for the items which are manufactured using such property. Seller shall not be responsible for any loss or damage to such property while it is in Seller's possession or control.

9. Taxes: Unless otherwise indicated on the face hereof, all prices and charges are exclusive of excise, sales, use, property, occupational or like taxes which may be imposed by any taxing authority upon the manufacture, sale or delivery of the items sold hereunder. If any such taxes must be paid by Seller or if Seller is liable for the collection of such tax, the amount thereof shall be in addition to the amounts for the items sold. Buyer agrees to pay all such taxes or to reimburse Seller therefore upon receipt of its invoice. If Buyer claims exemption from any sales, use or other tax imposed by any taxing authority, Buyer shall save Seller harmless from and against any such tax, together with any interest or penalties thereon which may be assessed if the items are held to be taxable.

10. Indemnity For Infringement of Intellectual Property Rights: Seller shall have no liability for infringement of any patents, trademarks, copyrights, trade dress, trade secrets or similar rights except as provided in this Part 10. Seller will defend and indemnify Buyer against allegations of infringement of U.S. patents, U.S. trademarks, copyrights, trade dress and trade secrets (hereinafter "Intellectual Property Rights"). Seller will defend at its expense and will pay the cost of any settlement or damages awarded in an action brought against Buyer based on an allegation that an item sold pursuant to this contract infringes in the Intellectual Property Rights of a third party. Seller's obligation to defend and indemnify Buyer is contingent on Buyer notifying Seller within ten (10) days after Buyer becomes aware of such allegations of infringement, and Seller having sole control over the defense of any allegations or actions including all negotiations for settlement or compromise. If an item sold hereunder is subject to a claim that it infringes the Intellectual Property Rights of a third party, Seller may, at its sole expense and options, procure for Buyer the right to continue using said item, replace or modify said item so as to make it noninfringing, or offer to accept return of said item and return the purchase price less a reasonable allowance for depreciation. Notwithstanding the foregoing, Seller shall have no liability for claims of infringement based on information provided by Buyer, or directed to items delivered hereunder for which the designs are specified in whole or part by Buyer, or infringements resulting from the modification, combination or use in a system of any item sold hereunder. The foregoing provisions of this Part 10 shall constitute Seller's sole and exclusive liability and Buyer's sole and exclusive remedy for infringement of Intellectual Property Rights.

If a claim is based on information provided by Buyer or if the design for an item delivered hereunder is specified in whole or in part by Buyer, Buyer shall defend and indemnify Seller for all costs, expenses or judgments resulting from any claim that such item infringes any patent, trademark, copyright, trade dress, trade secret or any similar right.

11. Force Majeure: Seller does not assume the risk of and shall not be liable for delay or failure to perform any of Seller's obligations by reason of circumstances beyond the reasonable control of Seller (hereinafter "Events of Force Majeure"). Events of Force Majeure shall include without limitation, accidents, acts of God, strikes or labor disputes, acts, laws, rules or regulations of any government or government agency, fires, floods, delays or failures in delivery of carriers or suppliers, shortages of materials and any other cause beyond Seller's control.

12. Entire Agreement/Governing Law: The terms and conditions set forth herein, together with any amendments, modifications and any different terms or conditions expressly accepted by Seller in writing, shall constitute the entire Agreement concerning the items sold, and there are no oral or other representations or agreements which pertain thereto. This Agreement shall be governed in all respects by the law of the State of Ohio. No actions arising out of the sale of the items sold hereunder or this Agreement may be brought by either party more than two (2) years after the cause of action accrues.