

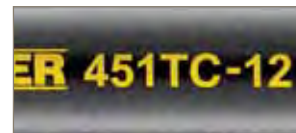
# How to select hose fittings

To make ordering Parker products easier, we have outlined the nomenclature for hose and fittings on this page. For information on ordering hose assemblies, see Section A.

## How to Select Hose

Example: 451TC-8

- 451**TC-8 - Hose type
- 451**TC**-8 - Indicates the special feature of the hose (in this case, "Tough Cover")
- 451TC-**8** - Hose inside diameter dash size (in this case, 8/16" or 1/2")



## How to Select Parkrimp Hose Fittings

Example: 1JC43-12-8C

- 1**JC43-12-8C - Fitting (1 = Crimp, 2 = Field Attachable, 3 = Push-Lok, Blank = Nipple with clamp or shell)
- 1JC**43-12-8C - End connection (In this case, a female Seal-Lok – swivel – straight)
- 1JC**43**-12-8C - Fitting series
- 1JC43-**12**-8C - Size of fitting end connection (In this case, 12/16" or 3/4")
- 1JC43-12-**8**C - Hose size (In this case, 8/16" or 1/2")
- 1JC43-12-8**C** - Fitting material:  
No Suffix = Steel  
B = Brass  
C = 316 Stainless Steel  
BA = Brass Nipple with Steel Nut and Socket  
BS = Brass Nipple with Brass Nut and Socket  
SM = Metric Hex



## How to Select Two-Piece Field Attachable Fittings

When selecting a two-piece field attachable fitting, the fitting part number (found in Section B of this catalog) needs to be broken down into two distinct numbers for the nipple and the socket.

Example: 20120-16-16B

### Socket Part Number

Example: 20020-16B

- 2**0020-16B - Fitting (1 = Crimp, 2 = Field Attachable, 3 = Push-Lok, Blank = Nipple with clamp or shell)
- 200**20-16B - End connection ("00" represents that it is a socket)
- 200**20**-16B - Fitting series
- 20020-**16**B - Hose size (In this case, 16/16" or 1")
- 20020-16**B** - Fitting material:  
No Suffix = Steel  
B = Brass  
C = 316 Stainless Steel  
BA = Brass Nipple with Steel Nut and Socket  
BS = Brass Nipple with Brass Nut and Socket  
SM = Metric Hex



### Nipple Part Number

Example: 0120-16-16B

- \_**0120-16-16B - Fitting (1 = Crimp, 2 = Field Attachable, 3 = Push-Lok, Blank = Nipple with clamp or shell)
- 01**20-16-16B - End connection (In this case, a male NPTF Pipe – rigid – straight)
- 01**20**-16-16B - Fitting series
- 0120-**16**-16B - Size of fitting end connection (In this case, 16/16" or 1")
- 0120-16-**16**B - Hose size (In this case, 16/16" or 1")
- 0120-16-16**B** - Fitting material:  
No Suffix = Steel  
B = Brass  
C = 316 Stainless Steel  
BA = Brass Nipple with Steel Nut and Socket  
BS = Brass Nipple with Brass Nut and Socket  
SM = Metric Hex



A

B

C

D

E