

clearcurrent® PRO SX vCell



Key Benefits

- Media provides hydrophobic performance for superior protection in wet environments
- Low pressure loss helps increase power output and/or improve fuel efficiency
- Easy to install and change out to minimize downtime
- Easily disposable by incineration

High Performance Filtration

Parker Hannifin's clearcurrent filter business offers extremely high levels of turbine protection in a wide range of environments with its selection of inlet filters. Our 40 years of expertise in gas turbine air intake design has influenced the development of this water-resistant filter. Its high dustholding capacity helps prolong filter life and significantly lowers operating costs. The filter is designed for low pressure loss to enable improved power output. Available in industry-standard sizes, the PRO SX is suitable for all GT OEM filter houses.

PRO – Predictable, Reliable Output

The clearcurrent PRO filter delivers predictable performance while maintaining steady pressure loss. Our vCell reduces both dry and wet contaminants from reaching the turbine blades. The clearcurrent vCell filter is designed to provide maximum protection to gas turbines against moisture, and is both mist and fog resistant, as well as particulate contaminants. The PRO SX provides balanced maintenance costs all while improving your MW output. This unique high efficiency final filter is made with PRO technology. The clearcurrent PRO SX vCell delivers exceptional gas turbine performance across the filter's service life.

Performance Data

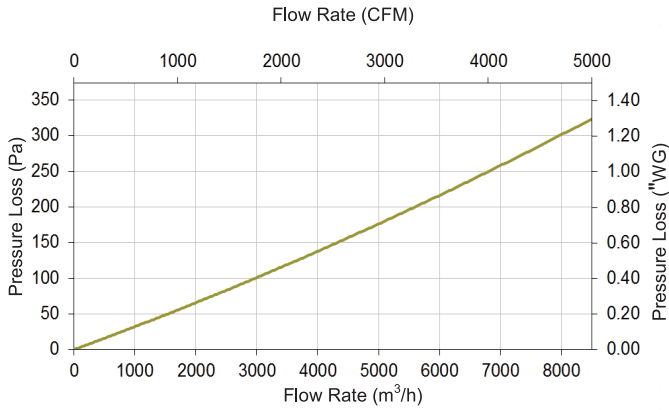
ASHRAE 52.2: Rating	MERV 15
EN779: 2012 Rating	F9
Rated Airflow	4250 m ³ /h, (2500 CFM)
ASHRAE dust-holding capacity (450 Pa) 3400m ³ /h	514 g (1.13 lb)
ASHRAE dust-holding capacity (450 (450 Pa) 4250 m ³ /h	295 g (0.65 lb)
Operating Temperature Range	-40°C to 70°C (-40°F to 158°F)

Filter Facts

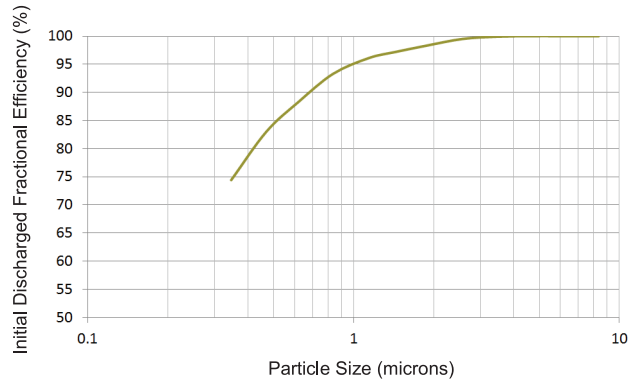
Construction	Robust, impact resistance plastic, AB (Acrylonitrile butadiene styrene)
Gasket	Single piece, polyurethane
Dimensions	595 mm H x 595 mm W x 293 mm D (23.4" H x 23.4" W x 11.5" D)
Clean Weight	10.5 kg (23.1 lb)
Application	Multi stage static or hybrid filtration, available also in reverse flow configuration

clearcurrent® PRO SX vCell

Pressure Loss



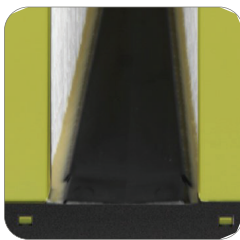
Initial Fractional Efficiency



Key Features



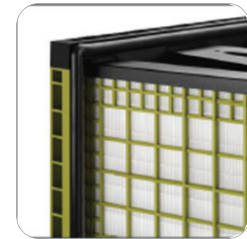
Best in class hydrophobic properties.



Fully potted and sealed



Continuous gasket with gasket stop



Protective grids, ensures wet burst pressure of greater than 25 " WG

Robust ABS Frame

For more information, contact your **Parker Hannifin Gas Turbine Filtration** representative:

11501 Outlook Street, Suite 100 | Overland Park, KS 66211
 T: +1.800.821.2222 | T: +1.816.356.8400 | F: +1.816.353.1873

3 Omega Park | Alton, GU34 2QE | United Kingdom
 T: +44 (0) 1420 541188 | F: 44 (0) 1420 541298

Email: altairclearcurrent@parker.com

www.parker.com/gtf

