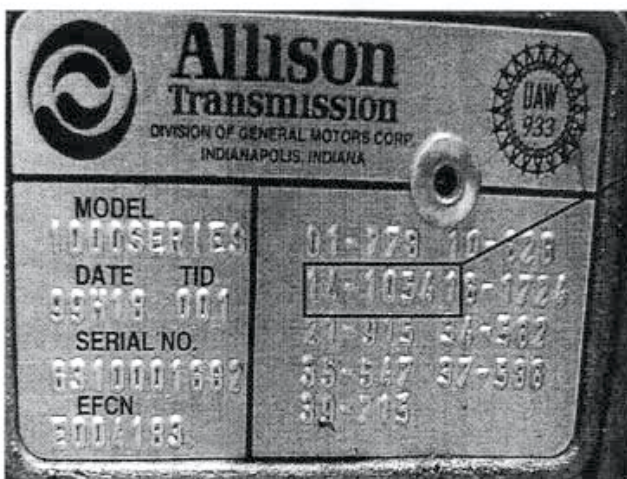


ALLISON 1000/2000/2400 SERIES**PTO-TEC-101****TECHNICAL****DATE:** December 10, 1999**TO:** All Chelsea® Power Take-Off Customers

The new Allison transmissions models 1000, 2000, and 2400 must be ordered with the P.T.O. option, like the Ford automatic 4R100. The tag on the transmission will have the numbers that identify if the P.T.O. option was ordered. **Caution:** All transmissions will have the P.T.O. opening. Transmissions ordered with the P.T.O. option, 14-1054, will include a P.T.O. drive gear (fig. 1). Transmissions ordered without the P.T.O. option, 14-1055, will have a stamped steel signal gear in place of a P.T.O. drive gear (Fig. 2). This signal gear provides feedback to the transmission electronics and **WILL NOT** drive a P.T.O.

One note of caution: Group option numbers have changed from the original numbers listed in the March 1999 Allison Parts Catalog and may change again in the future. The old number for a transmission with the P.T.O. drive gear was 14-1042 and is currently 14-1054. The old number for a transmission without a P.T.O. drive gear (signal gear installed) was 14-1044 and is currently 14-1055. We will make every effort to keep you informed, but if in doubt about this group number contact Allison Customer Service for correct Bills of Material.

PTO INFO**Transmission Option Code****14-1054:**Transmission with P.T.O. option**14-1055:**Transmission without P.T.O. option

Allison Transmission Tag

OVER

Transmission with P.T.O. Driver Gear
14-1054

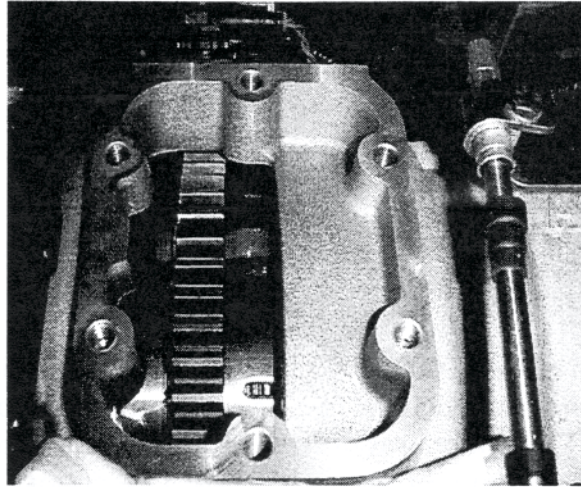


FIGURE 1

Transmission without P.T.O. Driver Gear
14-1055

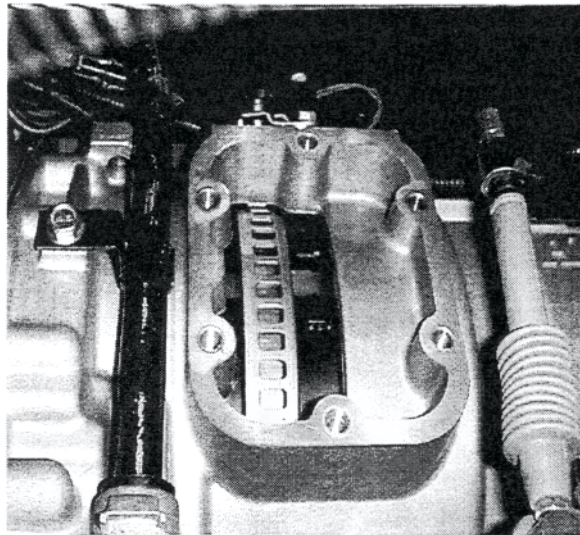


FIGURE 2

Walt Harris

Walt Harris
Product Manager
Chelsea Auxiliary Power Products