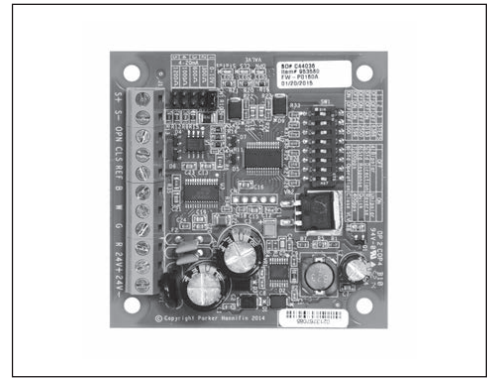




IB-G Quick Reference Guide

SD-402/032015



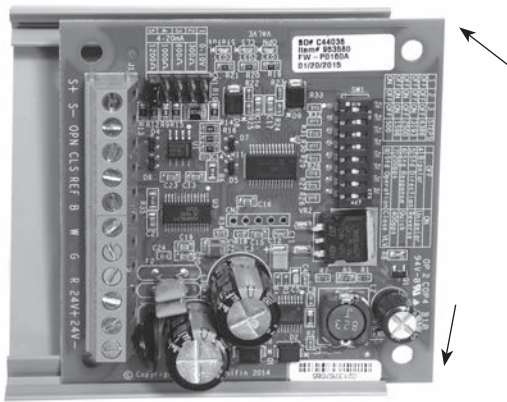
MOUNTING INSTRUCTIONS

1

Snap-In Plastic Track (Included with IB-G)

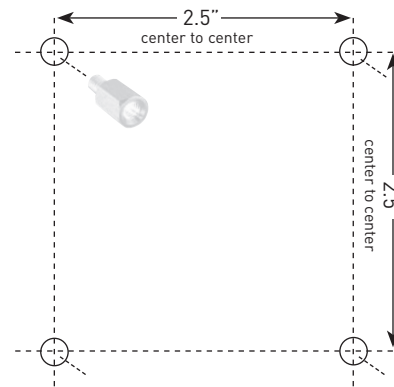


Screw track in place. (Screws NOT included.)

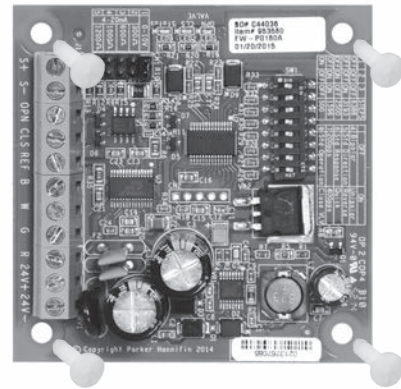


Insert IB-G, bottom first, then snap in top.

Non-metallic Standoffs (Not included with IB-G)



Screw standoffs in place (8-32 thread or smaller).

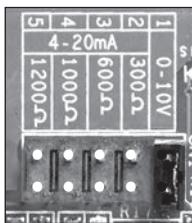


Screw IB-G to standoffs. (Screws NOT included.)

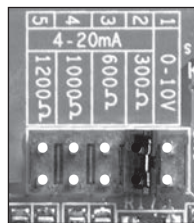
SETUP IB-G

2

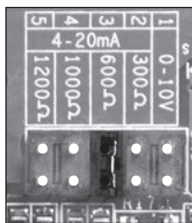
Install jumper to set control signal.



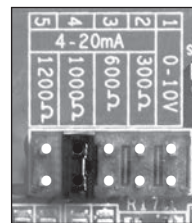
0-10V



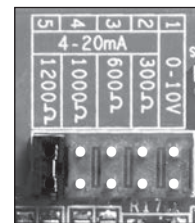
4-20mA 300Ω



4-20mA 600Ω



4-20mA 1000Ω

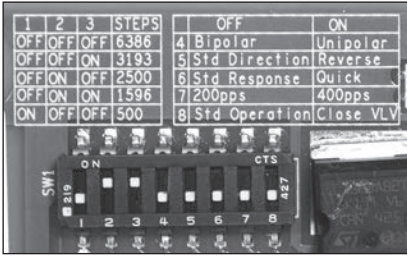


4-20mA 1200Ω

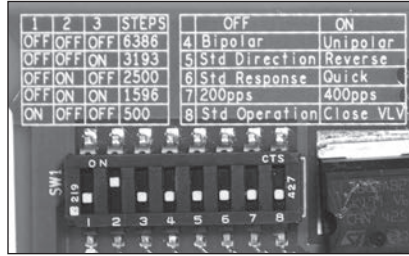
SETUP IB-G

3

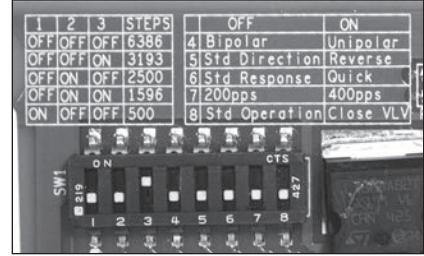
Set dip switches for valve type and operation.



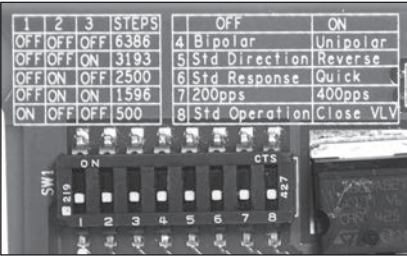
1596 steps / Bipolar



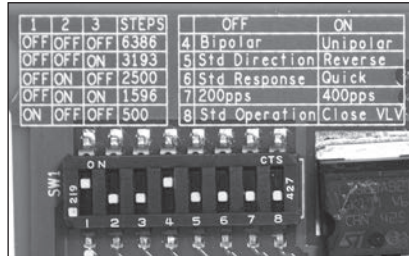
2500 steps / Bipolar



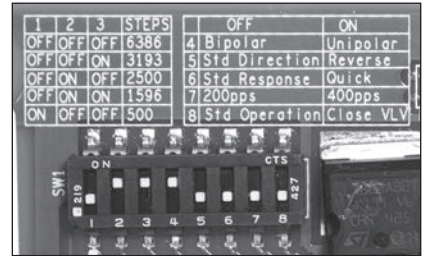
3193 steps / Bipolar



6386 steps / Bipolar



500 steps / Unipolar



1596 steps / Unipolar

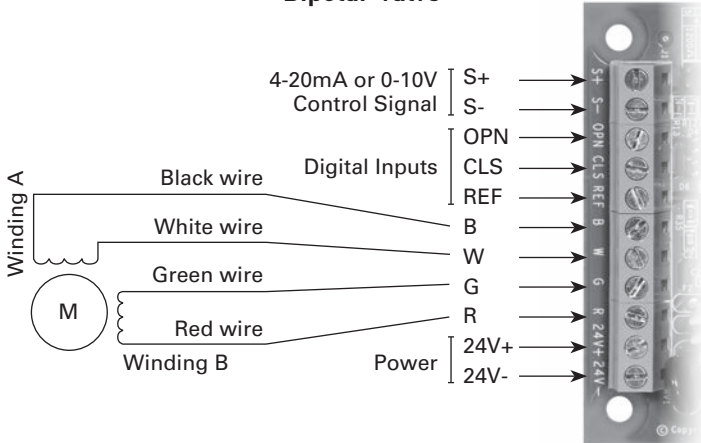
Note: The selection of "unipolar" will override dip switch No. 7: (1) 200 pps for "1596" step valves. (2) 30 pps for "500" step valves. Details of the other settings (5 valve direction, 6 responsive time, 7 valve opening/closing speed, and 8 close valve) can be found in the IB-G I/O manual.

WIRE IB-G

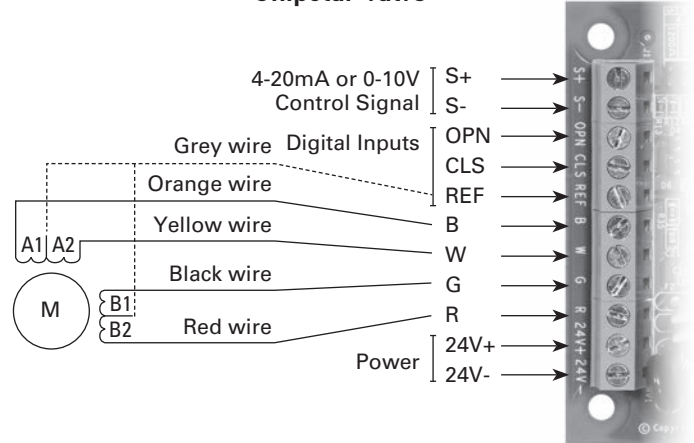
4

WARNING: Do not apply power to the IB-G until wiring is complete, and remove power before making any wiring changes.

Bipolar Valve



Unipolar Valve



Notes: **Transformer requirements:** One stepper motor valve per IB-G (30 VA per IB-G board). Two stepper motor valves per IB-G (40VA per IB-G board). Only one unipolar valve can be driven per IB-G. **Power supply requirements:** One leg of the 24V supply must be connected to all of the IB-G boards at the "24V+" terminal. The other leg of the 24V supply must be connected to all of the IB-G boards at the "24V-" terminal. **3.5 in.-lbs. maximum torque on all screw terminals.**

