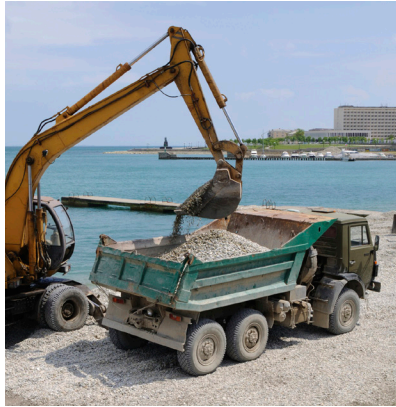


Parker SCR Coolant Valves

DEF Tank Heating Control for the Off-Road Market



Product Features:

- Flexible coil orientation allows easy installation in tight spaces
- Error proof mounting prevents costly DEF (Diesel Exhaust Fluid) system problems caused by backwards installation
- Debris resistant design retains valve performance when exposed to coolant contamination
- Metallic yoke & coil overmolding avoids cracking as a result of thermal expansion

Typical Applications:

SCR Coolant valves are suitable for many industrial applications:

- Construction Equipment
- Agricultural Machinery
- Mining Vehicles
- Rail & Transit Systems
- Stationary Generators
- Marine



Product Specifications

Valve

Type:	2-Way Solenoid
Function:	Normally Closed, Servo Piloted, Diaphragm Valve
Differential Pressure Range:	0.2 to 3.0 bar (3.0 to 45 psig)
Flow Rate:	From 12 to 36 l/min
Media Temperature:	-40°C to 135°C (water or water with max. 50% glycol solution)
Ambient Temperature:	-40°C to 85°C

Electrical

Part Description:	Epoxy Molded Coil
Coupling:	Bayonet twist and lock coupling for tight, vibration resistant connection
Sealing Capability:	Sealed Connector to meet IP69K (per DIN 40050, part 9)
Coil Wire Type:	Class "F" Encapsulate Material Temperature Rating Class "H" High Temperature Wire Rating
Coil Rating:	155°C
Color:	Black, with black male bayonet (24VDC), Red male bayonet (12VDC)

Operating Temperature Range:	-40°C (-40°F) to 85°C (185°F)
Terminations:	ISO 15170-A1-2.3-Sn/K2 or A3-2.1-SnK2
Wattage:	12.5 Watts at ambient temperature 20°C, 9 Watts / hot conditions
Output Voltages:	12 VDC 11.5 ± 7% at ambient temp. 24 VDC 46.0 ± 7% at ambient temp.
Pin Termination Diameter:	2.5 mm system
Surge Protection:	Internal bi-directional 50V diode or without



ENGINEERING YOUR SUCCESS.

2-Way Internal Pilot Operated – Normally Closed

Mounting Style	Drawing	Port Size	Orifice Size	Flow Cv	Operating Pressure Differential (PSIG)		Ambient Temp °C		Media Temp °C		Seal	Coil		Valve P/N
					Min.	Max.	Min.	Max.	Min.	Max.		VDC	Watts	
Standard	1	5/8"	7/16"	2.5	3	45	-40	85	-40	135	EPDM	12	9	321K1537216801496892C1
2-Bolt Mounting		5/8"	7/16"	2.5	3	45	-40	85	-40	135	EPDM	24	9	321K1537216901496892C2
Error Proof	2	5/8"	7/16"	2.5	3	45	-40	85	-40	135	EPDM	12	9	7321Z021N0BZ01C1
4-Bolt Mounting		5/8"	7/16"	2.5	3	45	-40	85	-40	135	EPDM	24	9	7321Z021N0BZ01C2
4-Bolt Quick Connect (SAE-J2044)	3	10mm	11mm	0.84	3	45	-40	85	-40	135	EPDM	12	9	321K15432168496193C1
		10mm	11mm	0.84	3	45	-40	85	-40	135	EPDM	24	9	321K15432169496193C2
Integrated with DEF Header	4	n/a	7/16"	1.5	3	45	-40	85	-40	135	EPDM	12	9	7321Z020N0BZ01C1
		n/a	7/16"	1.5	3	45	-40	85	-40	135	EPDM	24	9	7321Z020N0BZ01C2

Drawing

