

CV Check Valves
SH Shuttle Valves
LM Load/Motor Controls
FC Flow Controls
PC Pressure Controls
LE Logic Elements
DC Directional Controls
SV Solenoid Valves
PV Proportional Valves
CE Coils & Electronics
BC Bodies & Cavities
TD Technical Data

General Description

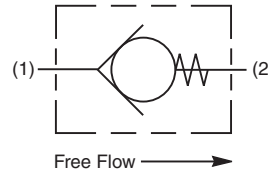
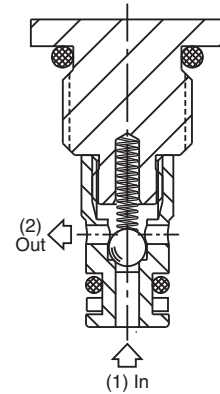
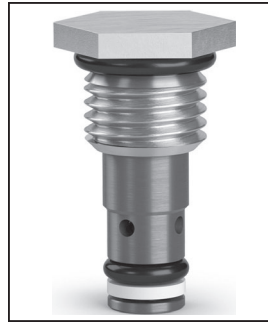
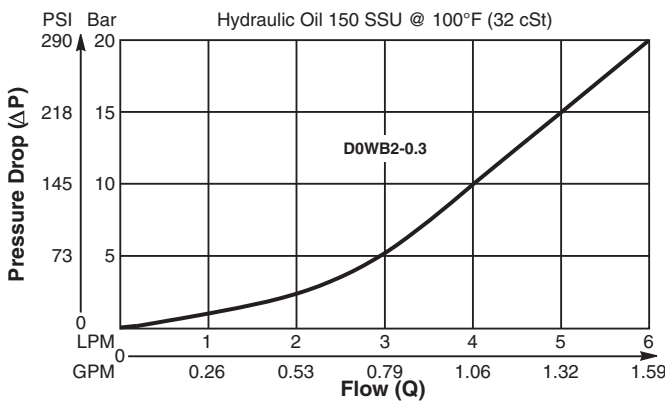
Miniature Ball Type Check Valve. For additional information see Technical Tips on pages CV1-CV2.

Features

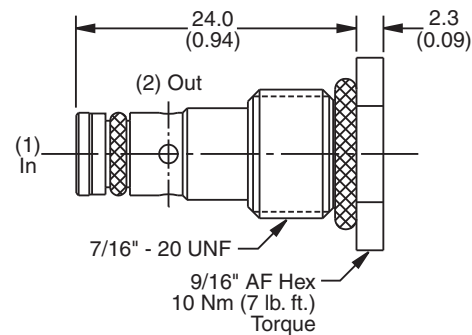
- Low leakage - less than 3 drops/min.
- Ball type construction for cost effective design
- Extremely compact
- Good contamination tolerance
- All external parts zinc plated

Performance Curve

Pressure Drop vs. Flow (Through cartridge only)



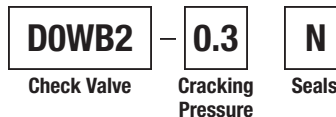
Dimensions Millimeters (Inches)



Specifications

| | |
|---------------------------------------|--|
| Rated Flow | 6 LPM (1.6 GPM) |
| Nominal Flow @ 7 Bar (100 PSI) | 3.5 LPM (0.9 GPM) |
| Maximum Inlet Pressure | 420 Bar (6000 PSI) |
| Leakage at 150 SSU (32 cSt) | Less than 3 drops/min. |
| Cartridge Material | Steel operating parts, hardened steel ball. |
| Fluid Compatibility/ Viscosity | Mineral-based or synthetic with lubricating properties at viscosities of 45 to 2000 SSU (6 to 420 cSt) |
| Filtration | ISO-4406 18/16/13, SAE Class 4 |
| Approx. Weight | .012 kg (.026 lbs.) |
| Cavity | CAV0W-2 (See BC Section for more details) |

Ordering Information



Order Bodies Separately
 See section BC

| Code | Cracking Pressure |
|------|-------------------|
| 0.3 | 0.3 Bar (4 PSI) |

| | | |
|-------------|------------|---------------|
| LB10 | 796 | S |
| Line Body | Porting | Body Material |

| Code | Seals / Kit No. | Operating Temp. |
|------|--------------------------------|-----------------------------------|
| N | Nitrile, Buna-N / (SK30519N-1) | -34°C to +121°C (-30°F to +250°F) |

| Code | Porting |
|------|----------|
| 796 | 1/4" BSP |

| Code | Body Material |
|------|---------------|
| S | Steel |