

## General Description

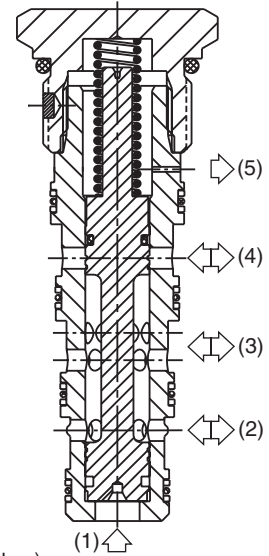
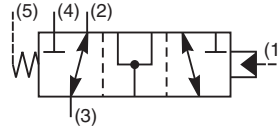
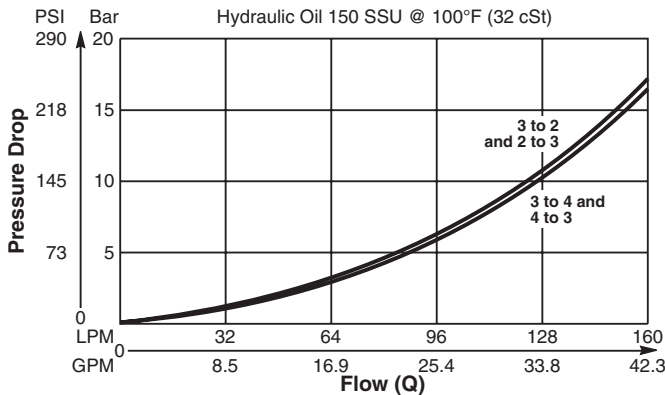
Pilot Operated Directional Valve, 3-Way, 2 Position, External Drain, Open Transition.

## Features

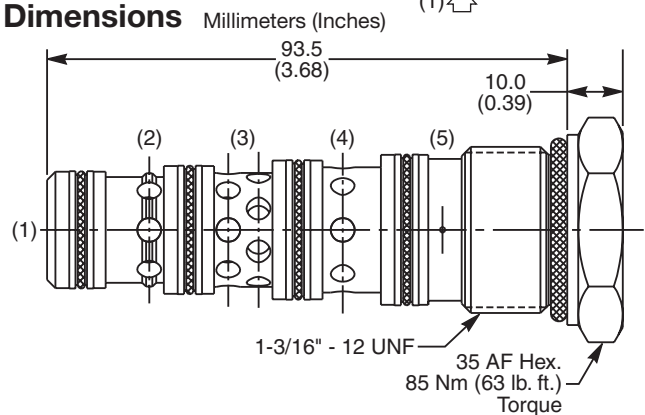
- High flow capacity
- Used as high flow switching or metering element
- Range of spring settings available
- All external parts zinc plated

## Performance Curve

**Pressure Drop vs. Flow (Through cartridge only)**



## Dimensions



## Specifications

<b>Rated Flow</b>	160 LPM (42.3 GPM)
<b>Nominal Flow @ 7 Bar (100 PSI)</b>	90 LPM (24 GPM)
<b>Maximum Inlet Pressure</b>	420 Bar (6000 PSI)
<b>Pilot Switching Pressure</b>	See ordering information
<b>Cartridge Material</b>	Steel operating parts, hardened steel spool.
<b>Operating Temp. Range/Seals</b>	-34°C to +121°C (Nitrile, Buna-N) (-30°F to +250°F) -26°C to +204°C (Fluorocarbon) (-15°F to +400°F)
<b>Fluid Compatibility/ Viscosity</b>	Mineral-based or synthetic with lubricating properties at viscosities of 45 to 2000 SSU (6 to 420 cSt)
<b>Filtration</b>	ISO-4406 18/16/13, SAE Class 4
<b>Approx. Weight</b>	.33 kg (.76 lbs.)
<b>Cavity</b>	5A (See BC Section for more details)

## Ordering Information

<b>N5A125</b>	—		
Directional Valve (All Ports Open)		Pilot Switching Pressure	Seals

**Highlighted** represents preferred options that offer the shortest lead times. Other options may be available, but at extended lead times.

Code	Switching Pressure
5.0	5.0 Bar (73 PSI)
<b>6.9</b>	<b>6.9 Bar (100 PSI) Std.</b>
<b>10.0</b>	<b>10.0 Bar (145 PSI)</b>
15.0	15.0 Bar (217 PSI)

If no switching pressure is specified, valve will be supplied as N5A125-6.9N

Code	Seals / Kit No.
<b>N</b>	<b>Nitrile, Buna-N / (SK30103N-1)</b>
V	Fluorocarbon / (SK30103V-1)

Order Bodies Separately  
 See section BC

<b>LB10</b>	<b>321</b>	
Line Body	Porting	Body Material

Code	Porting
321	3/4" SAE (main) 1/4" SAE (aux)

Code	Body Material
S	Steel (5000 PSI)
A	Aluminium (3000 PSI)