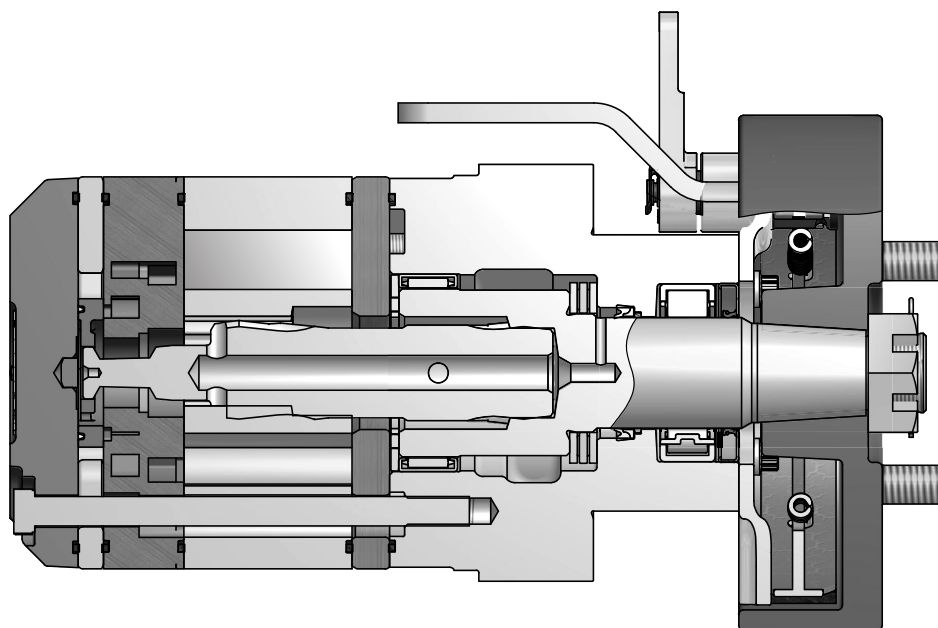


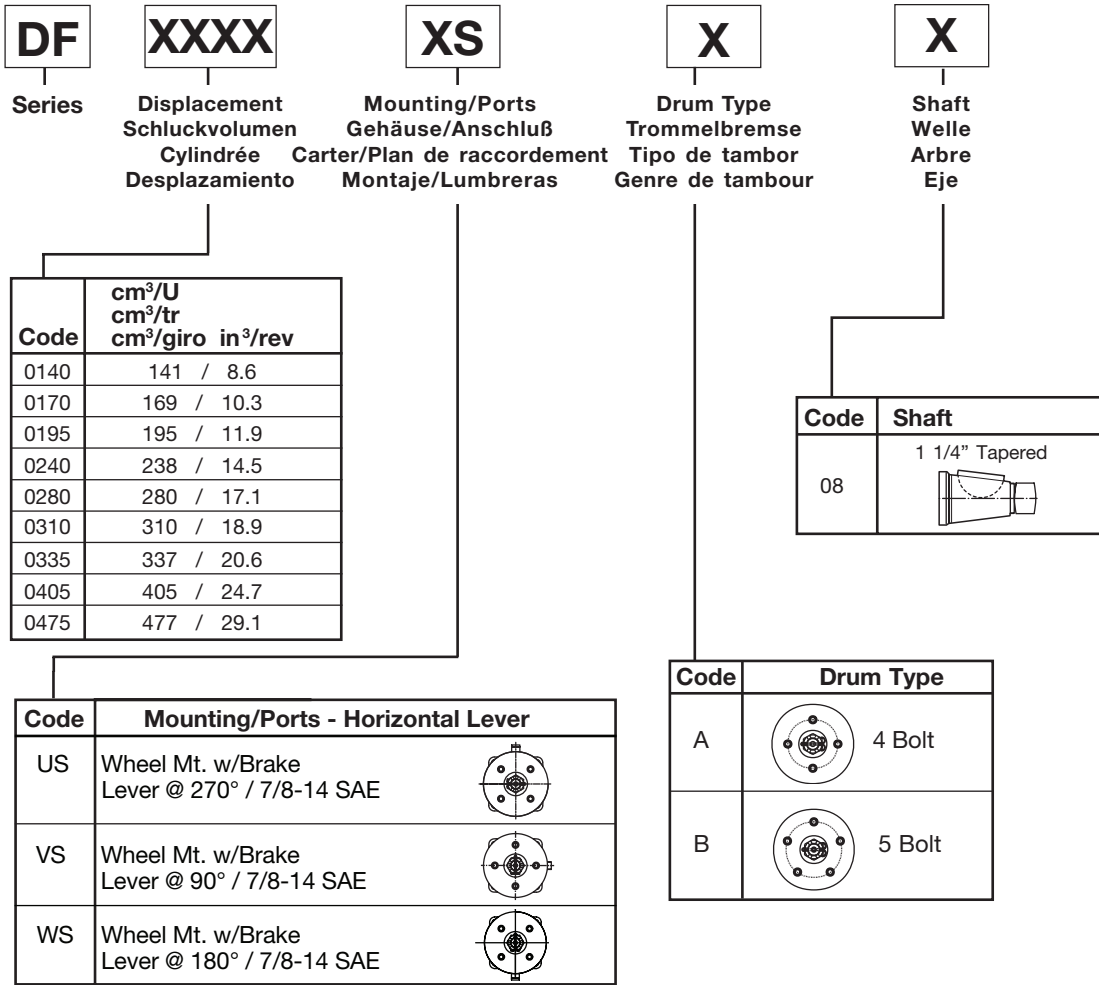
11 Displacements	(4.9 - 29.1 in ³ /rev)	
11 Schluckvolumen	81 ... 477 cm ³ /rev	
11 Cylindrée		
11 Desplazamientos		
	Cont.	Int.
Maximum Pressure	(3000 psid)	(4000 psid)
Eingangsdruck	... 207 bar	... 276 bar
Pression entrée		
Presion Maxima		
Maximum Oil Flow	(25 gpm)	
Schluckstrom	... 95 lpm	
Débit d'huile		
Caudal Maximo de Aceite		
Maximum Speed	(749 rpm)	
Drehzahl	749 rpm	
Vitesse de rotation		
Velocidad Maxima		
	Cont.	Int.
Maximum Torque	(6027 lb in)	(8106 lb in)
MaxDrehmoment	681 Nm	916 Nm
Couple		
Torque Maximo		
Maximum Side Load at Key	(3597 lb)	
Seitenlast	... 16000 N	
Charges latérales		
Carga Maxima Lateral		

A Mechanical Brake Motor for Tough Applications

Parker's DF Series brake motors consists of a mechanical drum brake mounted integrally to our rugged TF Series LSHT hydraulic motor. The compact size, reliable holding capacity and ease of installation make this motor with parking brake the ideal choice for the propulsion systems on many turf, agricultural and other vehicles.

The brake is available with horizontally applied levers and floating brake pads that can be adjusted as required over the life of the brake. The brake is for static applications only.







Shaded areas indicate custom order components. Standard pricing and delivery terms may not apply to these components. Please refer to the price list for details, or consult your Parker Pump Motor division Sales Resource.

0

Rotation
 Drehrichtung
 Direction de rotation
 Rotacion

XXXX

Options
 Opciones

Code	Front Port Rotation
0	Standard 
1	Reverse Timed Manifold 

Code	Options
AAAA	"Standard", Black Paint (045134)
AAAB	"Standard", No Paint
AAFA	Fluorocarbon (Viton) Seals, High Temp Commutator Seal, No paint
AAFW	Fluorocarbon (Viton) Seals, High Temp Commutator Seal, Black paint (045134)
ABAF	Bi-directional Shuttle (11:00*), Fluorocarbon (Viton) Seals, High Temp Commutator Seal, Black Paint (045134)

Code	Options
AAAT	Bi-directional Shuttle (11:00*), Black Paint (045134)
AABJ	Free Running Rotor Set, Black paint (045134)**
AABK	Free Running Rotor Set, No paint**
AAFX	Bidirectional shuttle (11:00*), No paint
BBBA	1015 PSI Int Bidirectional Relief, Black paint (045134)
BBBB	2031 PSI Int Bidirectional Relief, Black paint (045134)
BBBC	3046 PSI Int Bidirectional Relief, Black paint (045134)
BBBF	3046 PSI Int Bidirectional Relief, No paint
BBBG	1450 PSI Int Bidirectional Relief, Black paint (045134)
BBBJ	1450 PSI Int Bidirectional Relief, No paint
BBBL	1015 PSI Int Bidirectional Relief, Free Running Rotor Set, Black paint (045134)
BBBM	1015 PSI Int Bidirectional Relief, No paint
BBBN	2031 PSI Int Bidirectional Relief, No paint
BBBR	2031 PSI Int Bidirectional Relief, No Bolt, No Washer or Lock Washer for Shaft, Black paint (045134)
BBBX	3046 PSI Int Bidirectional Relief, Fluorocarbon (Viton) Seals, High Temp Commutator Seal, No paint
BBBY	1450 PSI Int Bidirectional Relief, Free Running Rotor Set, No paint
BBCL	1450 PSI Int Bidirectional relief, Free Running Rotor Set, Black paint (045134)
BBDB	3046 PSI Int Bidirectional Relief, Free Running Rotor Set, Black paint (045134)
FSAA	Int Short Speed Sensor, Black paint (045134)
FSAB	Int Short Speed Sensor, No paint
FSAC	Int Short Speed Sensor, Free Running Rotor Set, No paint
FSBS	Int Short Speed Sensor, 1450 PSI Int Bidirectional Relief, Black Paint (045134)
FSCF	Parker ECD Speed Sensor (455073), 3046 PSI Int Bidirectional Relief, No paint
FSEF	Parker ECD Speed Sensor (455073), Black Paint (045134)

* shuttle port position as viewed from the shaft end of the motor with the ports up (12:00)
 ** Not applicable to TA365&390, TB365&390, TC365&390, TE365&390, TG625,785&960, TH625,785&960

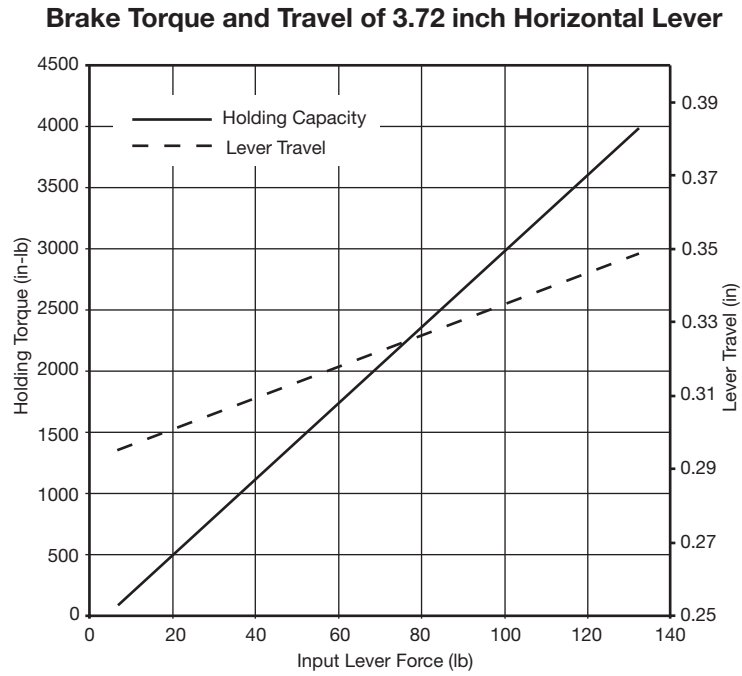
Shaded areas indicate custom order components. Standard pricing and delivery terms may not apply to these components. Please refer to the price list for details, or consult your Parker Pump Motor division Sales Resource.



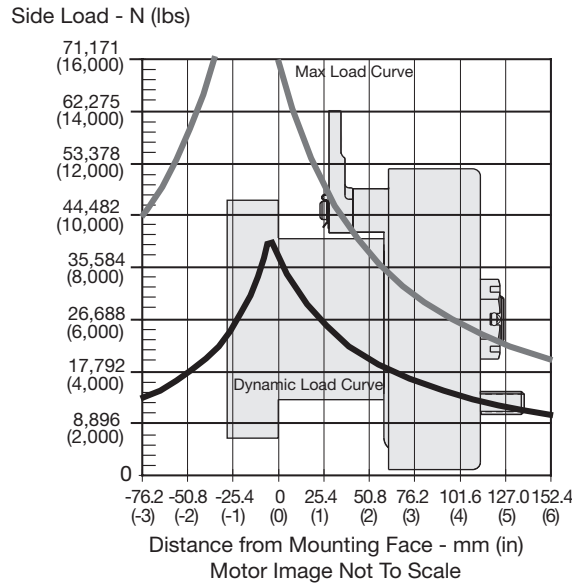
WARNING

This product can expose you to chemicals including lead which is known to the State of California to cause cancer, and DEHP which is known to the State of California to cause birth defects or other reproductive harm. For more information go to www.P65Warnings.ca.gov.

Horizontal Lever



Wheel Mount/Radnabengehause
Monture à roue/ Montaje de rueda



The dynamic side load curve is based on uni-directional steady state loads for L_{10} bearing life at 3×10^6 revolutions. Die zulässige auslegbare radiale Wellenbelastungskurve ist unter ruhenden, einseitig statisch gerichteten Lastverhältnissen auf eine L_{10} Lebensdauer mit 3×10^6 Umdrehungen kalkuliert. La courbe de charge latérale permise se base sur des charges unidirectionnelles en régime permanent pour le roulement L_{10} à 3×10^6 révolutions. La curva de valores admisibles de carga lateral está basada en cargas constantes para cojinetes L_{10} a 3×10^6 revoluciones.

The maximum load curve is defined by bearing static load capacity. This curve should not be exceeded at any time including shock loads. Die maximale radiale Wellenbelastungskurve ist definiert als maximale statische Last ohne Drehzahl. Sie gilt als Grenze und sollte keinesfalls überschritten werden. La courbe de charge maximale est définie par la capacité de charge statique portante. Cette courbe ne devrait être dépassée en aucun moment y compris pour les charges par à-coups. La curva de carga máxima queda definida por la capacidad de carga estática del cojinete. No se deben superar los valores de esta curva, ni siquiera con cargas provisorias de impacto.

Equation to Calculate the Expected Radial Bearing Life
Gleichung zur Ermittlung der Lagerlebensdauer

Equation to calculate the dynamic bearing life for a given load:
Bestimmung der erlaubten radialen Wellenbelastung mit vorgegebener Last

Use F_a , F_b and S in equation to determine hours of L_{10} bearing life.
Die Lebensdauer in Stunden ergibt sich durch einsetzen von F_a , F_b , und S in die nachstehende Formel.

$$L = \frac{3 \times 10^6}{60 \times S} \left\{ \frac{F_a}{F_b} \right\}^{3.33}$$

Where / Mit:

S = Shaft Speed RPM / Abtriebswellendrehzahl in min^{-1}

L = Life In Hours / Lebensdauer in Stunden

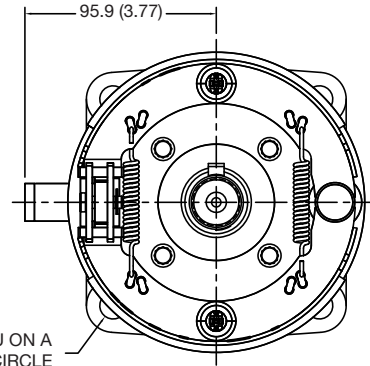
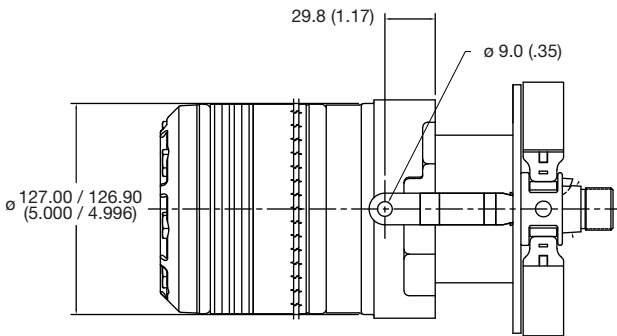
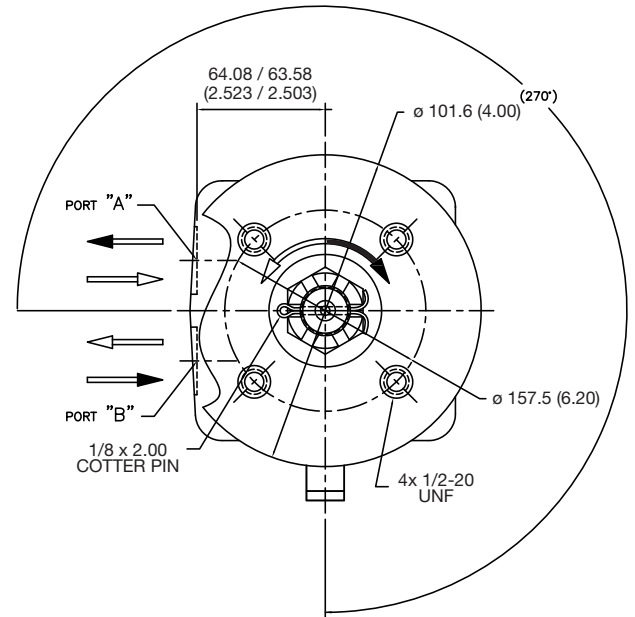
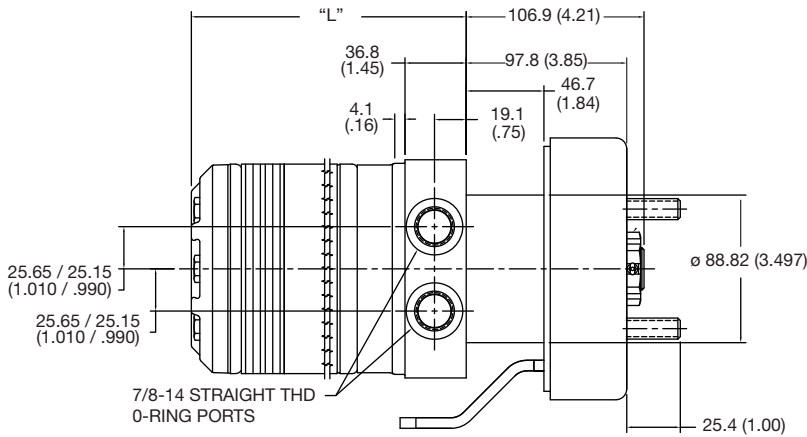
F_a = Dynamic side load defined by above curve at a distance from mounting flange. / Erlaubte radiale Wellenbelastung als Funktion der Laenge

F_b = Application side load. / Anwendungsseitige Wellenbelastung

Note: Calculations are based on L_{10} bearing life per ISO 281.
Auslegung basiert auf einer L_{10} Lebensdauer nach ISO 281

Code: US - Horizontal Lever

Wheel Mount w/Brake Lever / 7/8-14 SAE O-Ring



Note:

Brake Acuation Lever can be positioned in 90° increments from that shown.

Bremshebel ist kreisförmig in Sgmenten von 90° positionierbar.

Le levier de commande du frein peut être positionné à des échelons d'accroissement de 90° de ce qui est montré.

El brazo de actuación del freno se puede colocar en avances de 90° grados con respecto a la posición mostrada.

Code US	disp.	0140	0170	0195	0240	0280	0310	0335	0405	0475	0530	0625	0785	0960
Weight/Gewicht	kg	14.6	14.8	15.1	15.5	15.9	16.1	16.3	16.9	17.5	18.3	19.0	20.5	22.2
Poids/Peso	(lb)	(41.3)	(41.8)	(42.4)	(43.2)	(44.1)	(44.6)	(44.9)	(46.3)	(47.7)	(49.4)	(50.9)	(54.4)	(58.1)
Length	"L" mm	150.3	153.4	156.7	161.3	166.1	169.7	172.5	179.8	188.5	194.8	204.2	223.3	242.3
	"L" (in)	(5.92)	(6.04)	(6.17)	(6.35)	(6.54)	(6.68)	(6.79)	(7.08)	(7.42)	(7.67)	(8.04)	(8.79)	(9.54)

For performance data curves, see TF section.

English equivalents for metric specifications are shown in ().

009 DF.indd, a

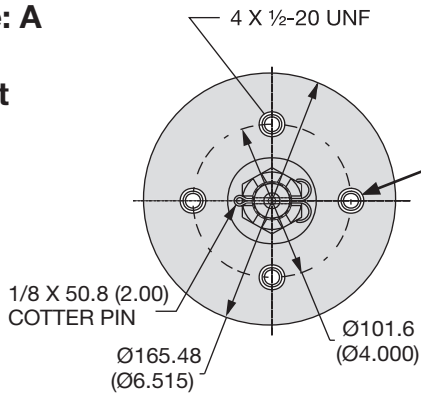


WARNING
 This product can expose you to chemicals including lead which is known to the State of California to cause cancer, and DEHP which is known to the State of California to cause birth defects or other reproductive harm. For more information go to www.P65Warnings.ca.gov.

**Drum Type/Trommelbremse/
 Tipo de tambor/
 Genre de Tambour**

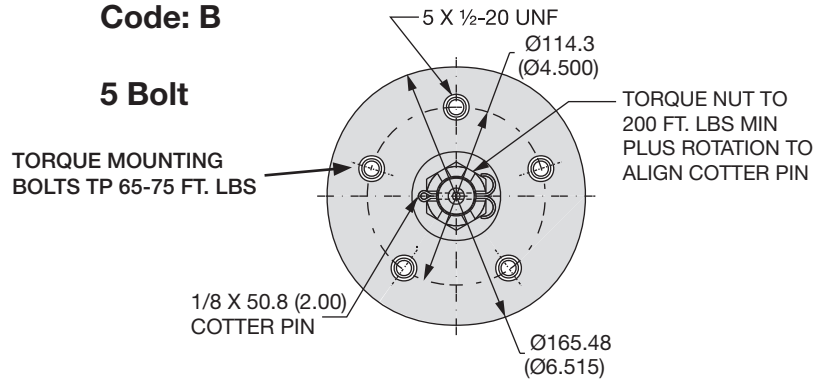
Code: A

4 Bolt



Code: B

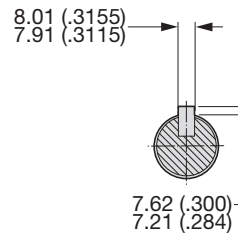
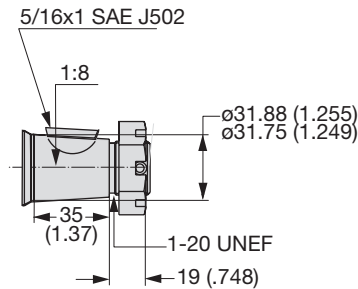
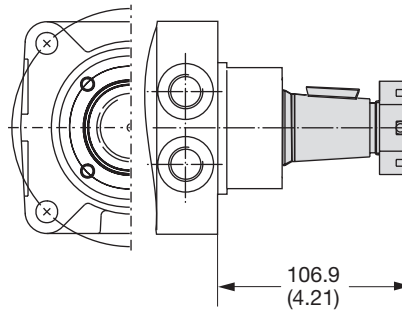
5 Bolt



**Shafts / Abtriebswellen
 Arbre / Ejes**

Code: 8

1 1/4" Taper



English equivalents for metric specifications are shown in ().

009 DF.indd, a



WARNING
 This product can expose you to chemicals including lead which is known to the State of California to cause cancer, and DEHP which is known to the State of California to cause birth defects or other reproductive harm. For more information go to www.P65Warnings.ca.gov.