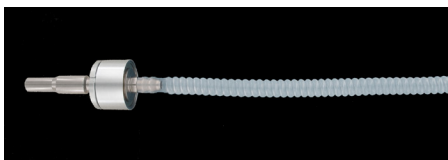




# PARFLEX DATA CENTER SOLUTIONS

Liquid cooling has emerged as a highly efficient solution as demand for higher computing power rises. Parflex offers several solutions to cover various aspects of liquid cooling, including convoluted PTFE, formed tubing, and single- and two-phase tubing products.



## CONVOLUTED PTFE

The CVH01-3/8ID heavy wall convoluted PTFE tubing is specifically designed for rack-to-manifold and on-blade cooling applications.

- Cuffed ends for effortless fitting installation
- Compatible with barbed connections and UQD blind mates
- Configurable lengths from 6 to 24 inches
- UL 94 V-0 compliant



## SINGLE- & TWO-PHASE COOLANT TUBING

SP2P is a thermoplastic coolant tubing designed for single- and two-phase coolant loops. This tubing has a tight bend radius and can be precision molded to fit unique routings.

- Low permeation ( $<1.5 \text{ kg/M}^2/\text{year}$ )
- Chemically resistant polyamide liner
- Proven barb fitting connection
- UL 94 V-0 fire resistant thermoplastic elastomer cover



## PURE COOLANT TUBING

Thermoplastic pure coolant tubing (PCT) is a single-phase coolant tubing designed to work in conjunction with Carstick® (metric) push to connect cartridges in on-blade cooling applications.

- Very low particle contaminants
- Minimized wall thickness
- UL 94 V-0 outer layer
- High-purity polyamide liner to maintain coolant integrity

ENGINEERING YOUR SUCCESS.

## CVH01-3/8ID - Convoluted PTFE

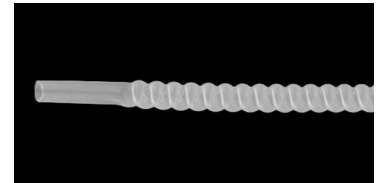
Part Number	Inside Diameter		Wall Thickness		Max Operating Pressure		Weight		Cuff Length	
	inch	mm	inch	mm	psig	bar	lb/ft	kg/mtr	inch	mm
CVH01-3_8ID	3/8	9.5	0.031	0.787	50	3.45	0.030	0.045	1	25.4

### Temperature Range

23°F (-5°C) to 140°F (60°C)

### Colors

○ Natural



## SP2P - Single-Phase, Two-Phase Hose

### Target Launch Q4 2025

Part Number	Nominal I.D.		Maximum O.D.		Working Pressure @ 73°F / 23°C		Bulk Minimum Bend Radius		Thermal Formed Minimum Bend Radius		Weight	
	inch	mm	inch	mm	psi	MPa	inch	mm	inch	mm	lbs/ft	kg/mtr
SP2P-4-XXX	1/4	6.5	1/2	13.0	100	0.7	2	51	3/4	20	0.033	0.022
SP2P-6-XXX	3/8	9.5	5/8	16.5	100	0.7	2-1/2	64	1	25	0.049	0.033

### Temperature Range

-40°F (-40°C) to 149°F (65°C)

### Colors

- Black (BLK)
- Blue (BLU)
- Red (RED)



## PCT - Pure Coolant Tubing

### Target Launch Q4 2025

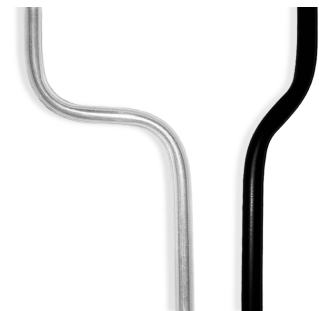
Part Number	Nominal O.D.		Nominal I.D.		Working Pressure @ 73°F / 23°C		Thermal Formed Minimum Bend Radius	
	mm	inch	mm	inch	bar	psi	mm	inch
PCT-4-XXX	0.157	4	2.60	0.102	6.9	100	10	13/32
PCT-8-XXX	0.315	8	5.80	0.228	6.9	100	15	19/32
PCT-10-XXX	0.394	10	7.20	0.283	6.9	100	20	3/4
PCT-12-XXX	0.472	12	8.70	0.343	6.9	100	25	1

### Temperature Range

-40°F (-40°C) to 149°F (65°C)

### Colors

- Natural (NAT)
- Black (BLK)



Parker Hannifin Corporation  
**Parflex Division**  
 1300 North Freedom Street  
 Ravenna, Ohio 44266  
 phone 330 296 2871

[www.parker.com/pfd](http://www.parker.com/pfd)

© 2025 Parker Hannifin Corporation

08/25