

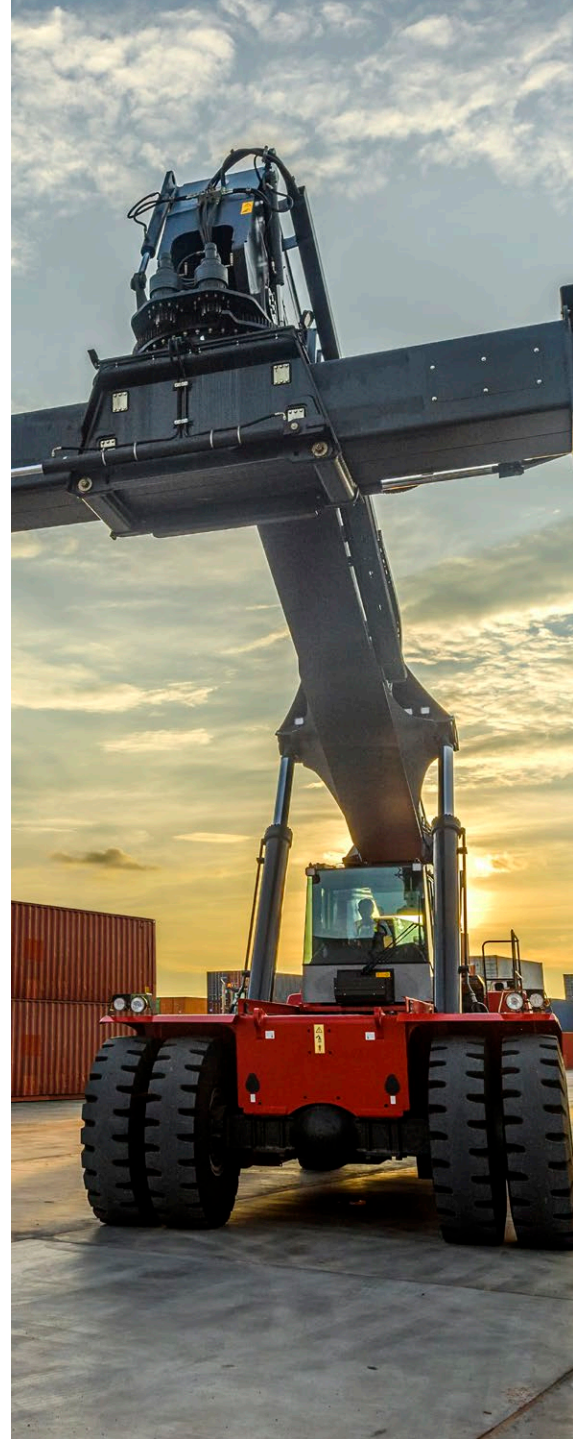
AXIAL PISTON PUMPS SERIES EP2/EP3

Electronic Controls
Variable Displacement



Table of Contents

| | |
|---|----|
| General Information | 3 |
| Introduction..... | 3 |
| Technical Features | 3 |
| Customer Benefits | 3 |
| Technical Data..... | 3 |
| Order chart..... | 4 |
| Electronic Control Options | 5 |
| Electronic Displacement Controls EC and EF..... | 5 |
| Control Functions and Options | 6 |
| Control Schematics..... | 6 |
| Technical Data..... | 8 |
| Pump Control Module - PCM..... | 9 |
| Ordering Code 1450039 | 9 |
| Technical Data | 9 |
| Dimensions | 10 |
| eP2075 | 10 |
| eP2075 w/ pressure sensor..... | 12 |
| eP2105 | 13 |
| eP2105 w/ pressure sensor | 15 |
| eP2145..... | 16 |
| eP2145 w/ pressure sensor | 18 |
| eP3105..... | 19 |
| eP3105 w/ pressure sensor | 21 |
| eP3145..... | 22 |
| eP3145 w/ pressure sensor | 24 |
| General Installation Information..... | 25 |



If you have questions about the products contained in this catalog, or their applications, please contact:
Parker Hannifin EMEA Sàrl European Headquarters
parker.com/msge

Conversion factors

| | |
|-------------------------|-----------------|
| 1 kg | 2.20 lb |
| 1 N..... | 0.225 lbf |
| 1 Nm | 0.738 lbf ft |
| 1 bar | 14.5 psi |
| 1 l | 0.264 US gallon |
| 1 cm ³ | 0.061 cu in |
| 1 mm..... | 0.039 in |
| 9/5 °C + 32..... | 1°F |
| 1 kW..... | 1.34 hp |

GENERAL INFORMATION

Introduction

Parker's P2 / P3 series has been designed to meet the specific demands of heavy duty mobile applications throughout the following markets:

- Material Handling Equipment (e.g Reachstacker, HD Lift Trucks, AT Cranes)
- Construction Equipment (e.g. Articulated Dump Trucks, Wheel Loaders)
- Mining and Drilling (e.g. Dump Trucks, Drill Rigs)
- Forestry Equipment (e.g. Forwarder, Harvester)

By featuring an optimized envelope and a unique port layout the product line provides for a cost saving direct mount on most typical mobile transmissions. High speed ratings enable high flow and productivity levels. With continuous pressure ratings of up to 350 bar.

P2 / P3 provides a high power density and enables downsizing of mobile machinery. As a standard every P2 / P3 comes with an integrated pre-compression volume which ensures low ripple operation and reduced noise emissions.

After having proven in load-sensing systems for many years Parker's series P2 / P3 is now extended by a new electronic control concept (eP2 / eP3), setting new standards in responsiveness, stability and efficiency.

Technical Features

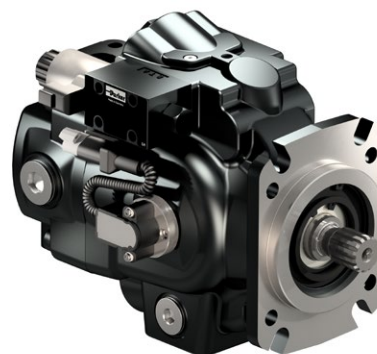
- Variable displacement, axial piston pumps for open circuit hydraulic systems
- Electronic displacement control with optional pressure limitation, input torque limitation and speed compensation (flow control)
- Electronic displacement feedback
- Optional electronic pressure feedback
- Available as standard (eP2075, eP2105, eP2145) and supercharged version (eP3105, eP3145)

Technical Data

| Series and Pump Size | | eP2075 | eP2105 | eP2145 | eP3105 | eP3145 |
|---|------------------------|--------|--------|--------|--------|--------|
| Maximum displacement | [cm ³ /rev] | 75 | 105 | 145 | 105 | 145 |
| Self priming speed at 1 bar absolute inlet pressure ¹⁾ | [rpm] | 2500 | 2300 | 2200 | 2600 | 2500 |
| Nominal pressure ²⁾ | [bar] | 320 | 350 | 350 | 350 | 350 |
| Minimum inlet pressure, absolute | [bar] | 0.8 | 0.8 | 0.8 | 0.8 | 0.8 |
| Maximum inlet pressure, absolute | [bar] | 10 | 10 | 10 | 1.5 | 1.5 |
| Maximum case drain pressure, absolute | [bar] | 1.5 | 1.5 | 1.5 | 1.5 | 1.5 |
| Minimum outlet pressure, absolute | [bar] | 15 | 15 | 15 | 15 | 15 |
| Weight with electronic displacement control (EC, EF) | [kg] | 41.6 | 60.6 | 75.6 | 59.6 | 73.6 |
| Mass moment of inertia (at axis of shaft) | [kg m ²] | 0.0101 | 0.0168 | 0.0241 | 0.0177 | 0.0264 |

¹⁾ Detailed inlet characteristics (at varying speed, displacement and inlet pressure conditions) can be taken from catalog HY30-2800/UK

²⁾ For maximum operating pressures exceeding above mentioned nominal ratings please consult manufacturer.



Customer Benefits

- Increased fuel efficiency by considerably reduced control losses
- Opportunity to eliminate LS losses by the introduction of a new electro-hydraulic system approach
- High productivity by outstanding responsiveness and stability of the closed loop displacement control as well as maximized output flow
- Increased machine availability and improved sub-system communication by condition monitoring opportunities
- Cost saving installation by direct PTO mount
- High altitude operation capability
- Low noise level and reduced flow ripple

ORDER CHART

P **00** **00** **00**

Axial piston pump, variable displacement
 n.a. n.a. n.a.

| Code | Pump Series |
|------|--------------|
| P2 | standard |
| P3 | supercharged |

| Code | Pump Size (max. displacement in cc/rev) | |
|------|--|-----|
| | eP2 | eP3 |
| 075 | 75 | - |
| 105 | 105 | 105 |
| 145 | 145 | 145 |

| Code | Shaft Rotation | Pump Series | |
|------|---------------------|-------------|-----|
| | | eP2 | eP3 |
| U | no paint | • | - |
| P | Parker black primer | • | - |
| D | no paint | - | • |
| E | Parker black primer | - | • |

| Code | Multiple Pump Option |
|------|----------------------------|
| 1 | shipped as individual pump |

| Code | Port Location and Threads | Pressure Sensor | |
|------|----------------------------|-----------------|-----|
| | | eP2 | eP3 |
| A | Side ports, UNC threads | no | |
| B | Side ports, metric threads | no | |
| C | Side ports, UNC threads | yes | |
| D | Side ports, metric threads | yes | |

| Code | Shaft Type | Pump Size | | |
|------|-----------------------------|-----------|-----|-----|
| | | 75 | 105 | 145 |
| B2 | SAE B-B Spline | • | - | - |
| C1 | SAE C Spline | • | • | • |
| C2 | SAE C-C Spline | • | • | • |
| C3 | SAE C Spline (w/o undercut) | • | • | • |
| D1 | SAE D Spline | - | • | • |
| D2 | SAE D Spline (w/o undercut) | - | • | • |
| M6 | DIN 5480 Spline, W50 | - | - | • |

| Code | Mounting Flange | Pump Size | | |
|------|----------------------|-----------|-----|-----|
| | | 75 | 105 | 145 |
| C | SAE J744 127-2/4 (C) | • | • | - |
| D | SAE J744 152-4 (D) | - | - | • |

¹⁾ Please consult manufacturer for other mounting flange options.

| Code | Through Drive | Pump Size | | |
|------|---|-----------|-----|-----|
| | | 75 | 105 | 145 |
| S1 | no through drive | • | • | • |
| T1 | prepared for through drive (solid cover plate) | • | • | • |
| A1 | flange 82-2 (A), coupling SAE A spline (9T) | • | • | • |
| B1 | flange 101-2 (B), coupling SAE B spline (13T) | • | • | • |
| B2 | flange 101-2 (B), coupling SAE B-B spline (15T) | • | • | • |
| C1 | flange 127-2 (C), coupling SAE C spline (14T) | • | • | • |
| C2 | flange 127-2 (C), coupling SAE C-C spline (17T) | - | - | • |
| C3 | flange 127-4 (C), coupling SAE C spline (14T) | • | • | • |
| C4 | flange 127-4 (C), coupling SAE C-C spline (17T) | - | - | • |
| D3 | flange 152-4 (D), coupling SAE D spline (13T) | - | - | • |

| Code | Control Option (failsafe option) | Electronic Displacement Sensor |
|------|---|--------------------------------|
| EC | electronic valve with zero displacement default | included |
| EF | electronic valve with max. displacement default | included |

| Code | Seals | Shaft Seal | Availability |
|------|-------|-------------|--------------|
| N | NBR | single, FPM | standard |
| B | | single, NBR | standard |
| V | | single, FPM | standard |
| D | FPM | double, FPM | on request |
| Q | | double, NBR | on request |
| T | | double, FPM | on request |

ELECTRONIC CONTROL OPTIONS

Electronic Displacement Controls EC and EF

Electronically displacement controlled eP2 / eP3 provides an output flow defined by a displacement input command and maintains its swash angle (and thereby output flow level) until a new displacement command is received.

Under static displacement control conditions - i.e. as long as actual pump displacement (actual value) corresponds to displacement command (nominal value) - the control spool of the pump's control valve is held at metering edge (zero point). This is realized by applying a defined holding current (PWM signal) to the valve's proportional solenoid. If commanded displacement changes (actual value \neq nominal value) the control spool is moved from its zero point. Depending on specified default setting (EC: 0% displacement / EF: 100 % displacement) raising the current either results in an increased (EC) or decreased (EF) displacement of the pump. As soon as desired displacement has been achieved (actual value = nominal value) the control spool returns to its zero point.

Default options (behaviour at power loss):

| | |
|----|------------------------------|
| EC | 0 % (zero displacement) |
| EF | 100 % (maximum displacement) |

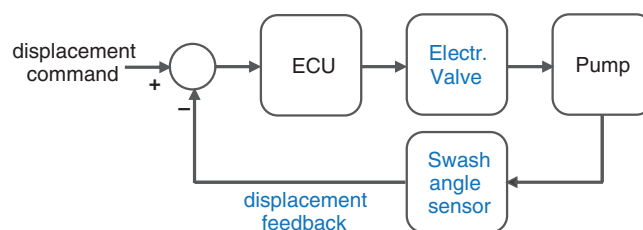
A minimum servo pressure of 15 bar is required to control the pump. Without adequate servo pressure the pump is mechanically biased on stroke. If a system pressure of below 15 bar is required the pump might be equipped with a preload valve. Please consult Parker for further information.

Closed control loop

By featuring both an electro-proportional directional control valve and a swash angle sensor the eP2 / eP3 design takes advantage of a closed control loop which provides for:

- Increased accuracy and system response
- Higher stability and minimized oscillation
- Improved fuel efficiency
- Electronic displacement feedback for analysis and sub-system communication

Closed loop working principle:



Power savings

Compared to a conventional hydro-mechanical compensator based approach the electronic displacement control of eP2 / eP3 is characterized by a significantly reduced compensator oil consumption and thereby increased volumetric efficiency. Thus eP2 / eP3 provides for considerable power savings (measured values at 1500 rpm):

| | 100 bar | 300 bar |
|---|---------|---------|
| eP2075 power saving compared to LS controlled pump [kW] | 0.2 | 0.85 |

Fuel saving potentials

Beside providing for improved control characteristics as well as power savings by control design eP2 / eP3 also enables new hydraulic system approaches such as the purely electronic control of single actuator operation, which eliminates the delta p losses of a conventional LS system.

Example:

$\Delta p = 20$ bar

$Q = 150$ L/min (75 cc/rev @ 2.000 rpm)

Resulting power consumption = 5 kW

Potential fuel saving @ 1.500 h/a and 0.2 l/kWh: **1.500 l/a**

Typical response times

(Displacement control)

| | | 100 bar | 300 bar |
|-------------------------------------|-----------------|---------|---------|
| t onstroke (10% to 90% displ.) [ms] | eP2075 | 120 | 95 |
| | eP2105 / eP3105 | 125 | 100 |
| | eP2145 / eP3145 | 130 | 110 |
| t destroke (90% to 10% displ.) [ms] | eP2075 | 120 | 155 |
| | eP2105 / eP3105 | 130 | 160 |
| | eP2145 / eP3145 | 145 | 165 |

ELECTRONIC CONTROL OPTIONS

Control Functions and Options

As an option eP2 / eP3 can be equipped with a pressure sensor to either grant for pressure monitoring or to realize electronic pressure limitation. Pressure limitation function as well as secondary control options such as variable input torque limitation and speed compensation / flow control require the usage of a Parker supplied Pump Control Module (PCM). PCM command inputs can be both analog (0..5V) or CAN (J1939).

The following chart shows the range of available control functions (eff. March, 2018):

| Control option | |
|---|---|
| Main | Secondary |
| D ¹⁾ displacement control | |
| DP ²⁾ displacement control w pressure limitation | |
| | T ²⁾ torque limitation |
| | S ²⁾ speed compensation / flow control |

1) Can be realized with Parker PCM or customer ECU (closed control loop)

2) Requires Parker PCM

Beside pressure limitation (which defines a maximum pressure setting) a variable pressure control function can be made available on request. Please consult manufacturer for further details.

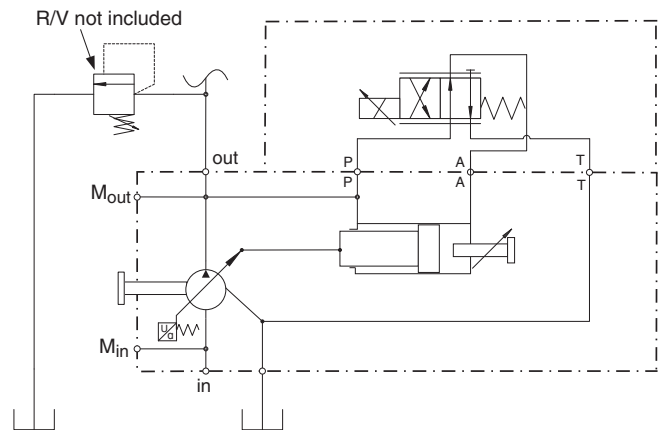
Note:

The hydraulic circuit must be equipped with a main flow relief valve to secure pump and hydraulic components. This main flow relief valve is outside the scope of supply.

Control Schematics

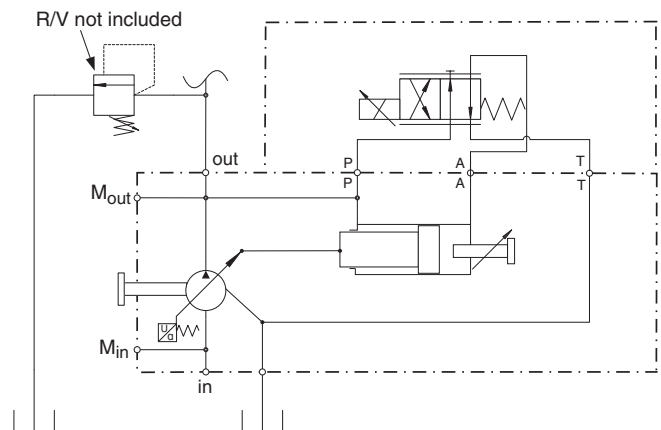
Displacement control w/o Parker supplied PCM

0 % default setting (EC), standard valve position



Displacement control w/o Parker supplied PCM

100 % default setting (EF), standard valve position

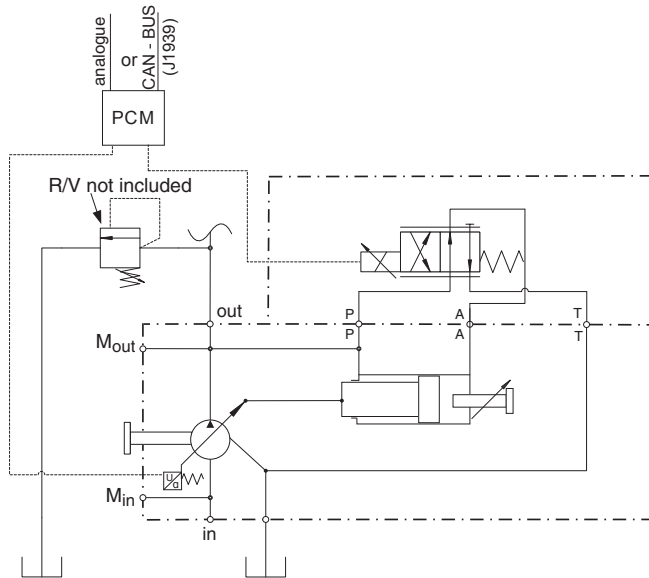


ELECTRONIC CONTROL OPTIONS

Displacement control (main: D) w/ Parker supplied PCM

Example:

0 % default setting (EC), standard valve position



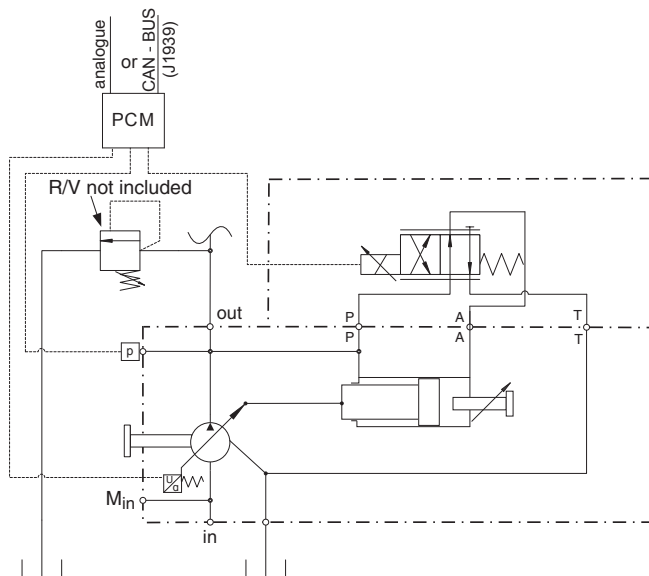
Displacement control with optional pressure limitation (main: D / DP)

w/ Parker supplied PCM
w/ Pressure Sensor

- Optional torque limitation (secondary: T)

Example:

0 % default setting (EC), standard valve position



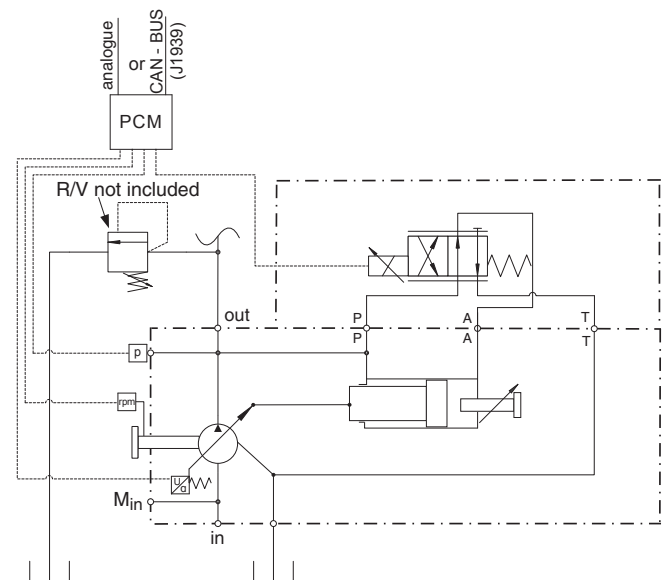
Displacement control with optional pressure limitation (main: D / DP)

w/ Parker supplied PCM
w/ Pressure sensor

- Optional torque limitation (secondary: T)
- Optional speed compensation / flow control (secondary: S)
- External speed sensor (not pump mounted, outside scope of supply) or CAN speed feedback required for speed compensation

Example:

0 % default setting (EC), standard valve position



ELECTRONIC CONTROL OPTIONS

Technical Data

Proportional control valve

| General | |
|-------------------------------|---|
| Model | Parker D1FB series |
| Design | Direct operated proportional DC valve (4/2 design) |
| Connector | Deutsch DT04-2P |
| Mating connector | Deutsch DT06-2S |
| Protection class | IP 67 in accordance with EN 60529 (with correctly installed and mounted mating connector) |
| Wiring recommendation | Stranded wire cable, min. 0.75 mm ² (AWG 18) |
| Electrical characteristics | |
| Supply voltage | 12 V (standard option) |
| Current consumption | 2.2 A (standard option) |
| Nominal resistance (at 20 °C) | 4.4 Ω |
| Recommended dither frequency | 120 Hz |
| Recommended dither amplitude | 4 % |
| Operating time | 100 % |

Swash angle sensor

| General | |
|----------------------------|---|
| Model | Parker RS52 series |
| Design | Ratiometric hall effect sensor |
| Connector | Deutsch DT04-3P |
| Mating connector | Deutsch DT06-3S |
| Protection class | IP 67 in accordance with EN 60529 (with correctly installed and mounted mating connector) |
| Wiring recommendation | Stranded wire cable, min. 0.5 mm ² (AWG 20) |
| Electrical characteristics | |
| Supply voltage | 5 VDC regulated |
| Current consumption | 12 mA max. |
| Output signal voltage | [2.5...4.5]V (standard control valve position) |
| | [2.5...0.8]V (control valve on opposite side of pump) |
| Max. output voltage drift | 0.5m V/°C |
| Sinusoidal vibration | MIL-STD-202G, method 204D, 10-2kHz, 10G peak, 8 hr/axis |
| Random vibration | MIL-STD-202G, method 214A, 5-2kHz, 7,68G rms, 8 hr/axis |
| Approvals | |
| CE | 12 V (standard option) |

Pressure sensor

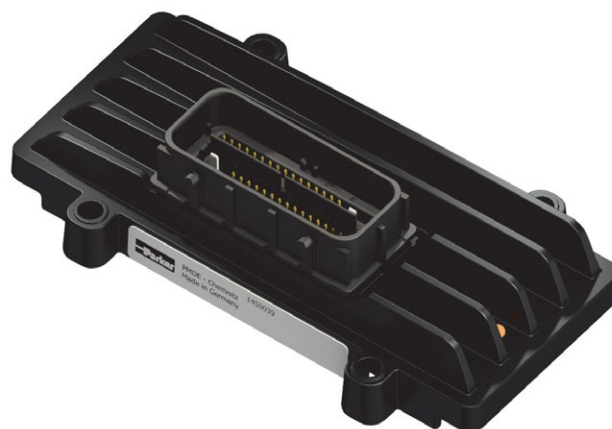
| General | |
|----------------------------|---|
| Model | Parker SCP02 series |
| Design | Ratiometric pressure sensor |
| Connector | Deutsch DT04-4P |
| Mating connector | Deutsch DT06-4S |
| Protection class | IP 67 in accordance with EN 60529 (with correctly installed and mounted mating connector) |
| Wiring recommendation | Stranded wire cable, min. 0.5 mm ² (AWG 20) |
| Electrical characteristics | |
| Supply voltage | 5 VDC regulated |
| Current consumption | 14 mA max. |
| Output signal voltage | [0.5...3.7]V (eP2075) |
| Max. output voltage drift | 0.5 mV/°C |
| Vibration resistance | IEC 60068-2-6: 20g |
| Shock resistance | IEC 60068-2-27: 700g |
| Approvals | |
| CE | 2014/30/EU, EMC Directive |

ELECTRONIC CONTROL OPTIONS

Pump Control Module - PCM

Ordering Code 1450039

- Task oriented controller with eP2 / eP3 specific firmware
- Covers all primary and secondary control functions (see page 6)
- Can be operated as both stand alone module (analog inputs) or CAN module (J1939)
- High reliability connectors system for harsh mobile environment
- CE certified



Technical Data

Proportional control valve

| General | |
|-----------------------------|--|
| Model | Parker PCM |
| Design | IQAN task oriented controller with pump specific firmware |
| Weight | 350 g |
| Temperature range | [-40...+85]°C |
| Protection class | IP 65 in accordance with EN 60529 |
| Connector | Molex MX123, 66 pos. Ordering codes: Connector 20085114 Connector + 2.5 m cable 20085124 |
| Electrical characteristics | |
| Supply voltage | [9...32]VDC |
| Current consumption at idle | typ. 180 mA (24V) |
| | typ. 250 mA (12V) |
| Network | |
| CAN buses | 2 |
| Protocols | IDP (IQAN diagnostic protocol) |
| | SAE J1939 for master communication |
| Approvals | |
| CE | 2014/30/EU, EMC Directive |
| E-mark | ECE Regulation No. 10.05:2014, approval N° E5 10 R - 05313 |

Related documents

Further information regarding electronic components, functionality and integration of eP2 / eP3 can be taken from the following related documents:

MSG30-2901-INST (Installation, start up and setup manual - electronic controls)

MSG30-2902-INST (Installation and start up manual - PCM)

MSG30-2903-INST (Installation and start up manual - CAN PlugIn)

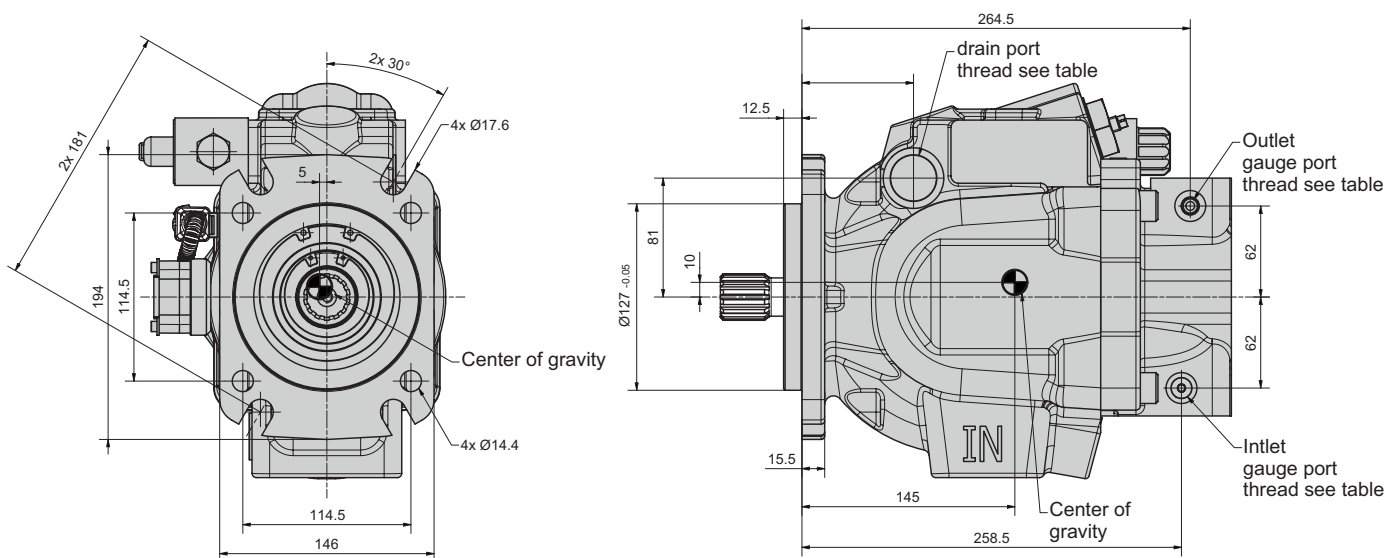
DIMENSIONS

eP2075

Pump shown is a CW rotation eP2075 with proportional control valve and swash angle sensor. Dimensions for EC and EF control option are identical.

CCW pump will have inlet and outlet gage port on opposite side of rear cover.

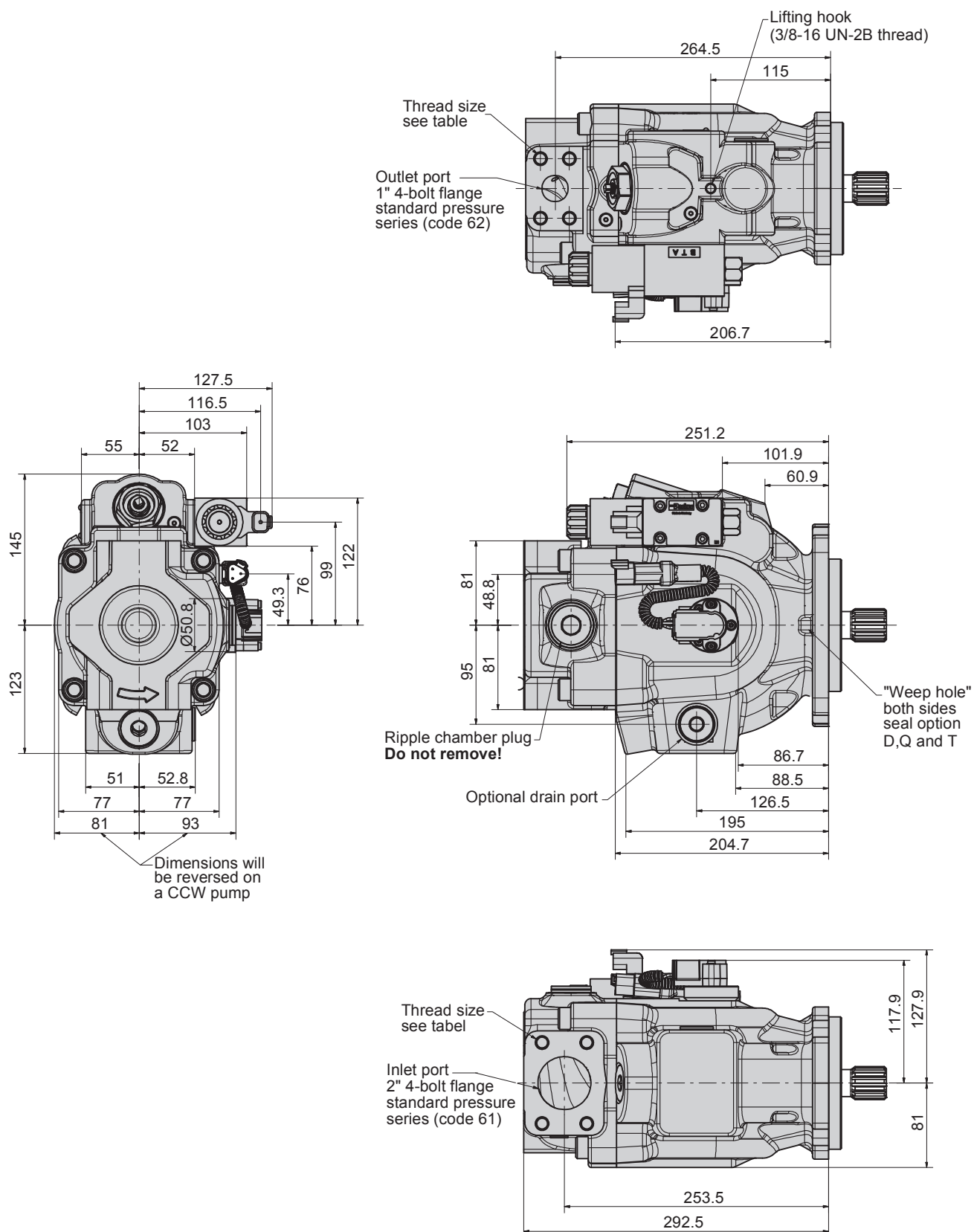
If required by installation the control valve and the swashangle sensor can be positioned at opposite side of the pump. Please consult manufacturer for details.



| Port & threads option | Drain port | Inlet port | Outlet port | Inlet & outlet gage port |
|-----------------------|---|------------|-------------|---|
| A / C (UNC) | SAE-12 straight thread / O-ring port: 1-1/16-12 thread | 1/2-13 UN | 7/16-14 UN | SAE-4 straight thread / O-ring port: 7/16-20 UN thread |
| B / D (metric) | ISO 6149 straight thread / O-ring port: M27 x 2 thread | M12 x 1.75 | M12 x 1.75 | ISO 6149 straight thread / O-ring port: M12 x 1.5 thread |

DIMENSIONS

eP2075



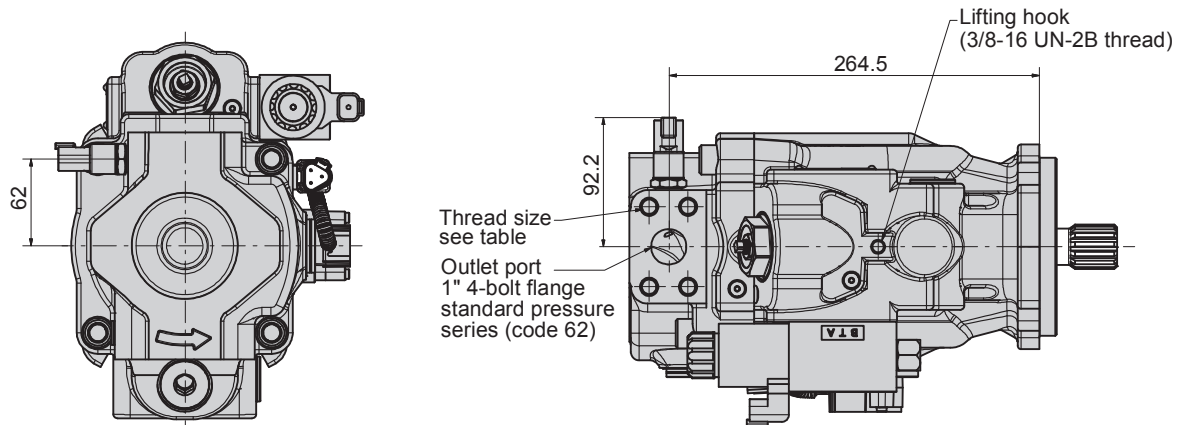
For **thru drive dimensions and shaft information** please check catalogue **MSG30-2800/UK** (Axial Piston Pumps - Series P2 / P3).

DIMENSIONS

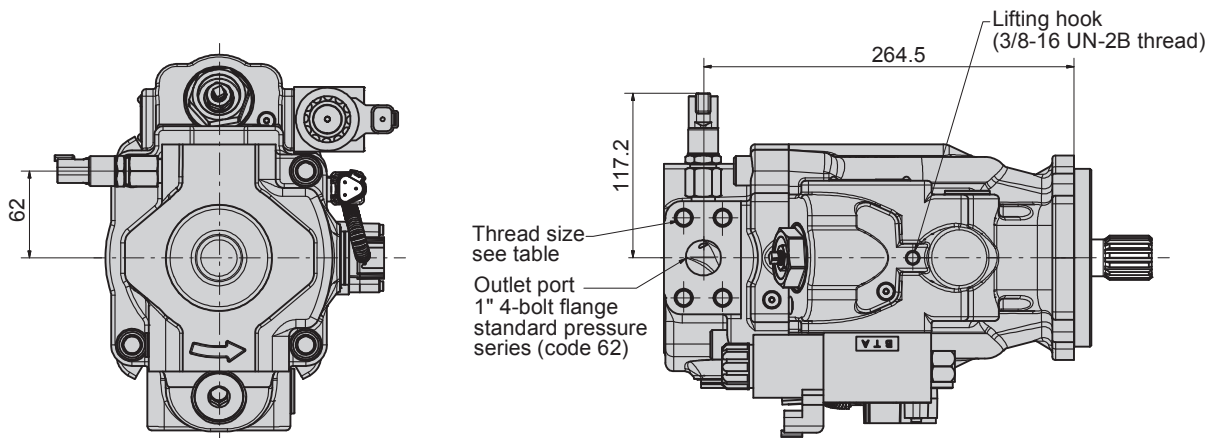
eP2075 w/ pressure sensor

Pump shown is a CW rotation eP2075 with proportional control valve, swash angle sensor and pressure sensor.

Port option C (pump with UNC threads)



Port option D (pump with metric threads)



| Port & threads option | Drain port | Inlet port | Outlet port | Inlet & outlet gage port |
|-----------------------|---|------------|-------------|---|
| A / C (UNC) | SAE-12 straight thread / O-ring port: 1-1/16-12 thread | 1/2-13 UN | 7/16-14 UN | SAE-4 straight thread / O-ring port: 7/16-20 UN thread |
| B / D (metric) | ISO 6149 straight thread / O-ring port: M27 x 2 thread | M12 x 1.75 | M12 x 1.75 | ISO 6149 straight thread / O-ring port: M12 x 1.5 thread |

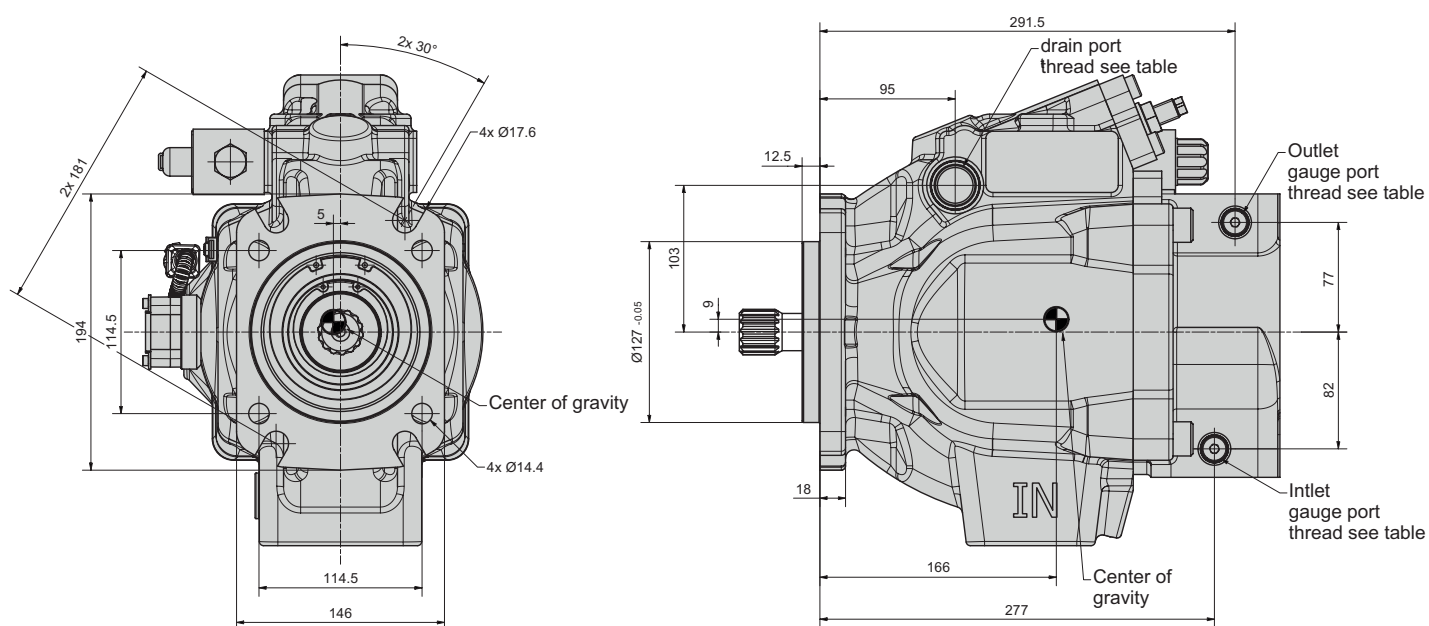
DIMENSIONS

eP2105

Pump shown is a CW rotation eP2105 with proportional control valve and swash angle sensor. Dimensions for EC and EF control option are identical.

CCW pump will have inlet and outlet gage port on opposite side of rear cover.

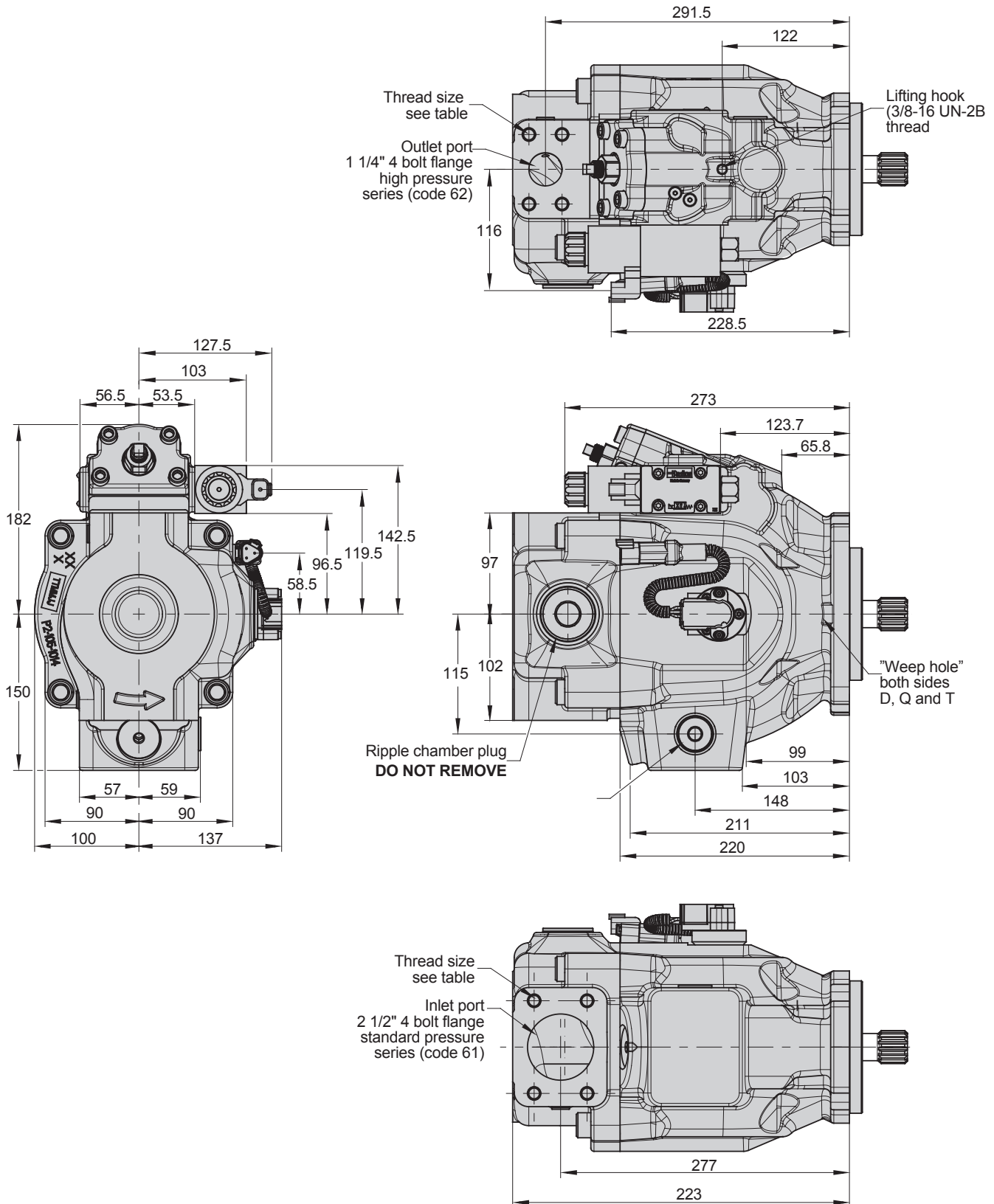
If required by installation the control valve and the swash angle sensor can be positioned at opposite side of the pump. Please consult manufacturer for details.



| Port & threads option | Drain port | Inlet port | Outlet port | Inlet & outlet gage port |
|-----------------------|---|------------|-------------|---|
| A / C (UNC) | SAE-12 straight thread / O-ring port: 1-1/16-12 thread | 1/2-13 UN | 7/16-14 UN | SAE-4 straight thread / O-ring port: 7/16-20 UN thread |
| B / D (metric) | ISO 6149 straight thread / O-ring port: M27 x 2 thread | M12 x 1.75 | M12 x 1.75 | ISO 6149 straight thread / O-ring port: M12 x 1.5 thread |

DIMENSIONS

eP2105



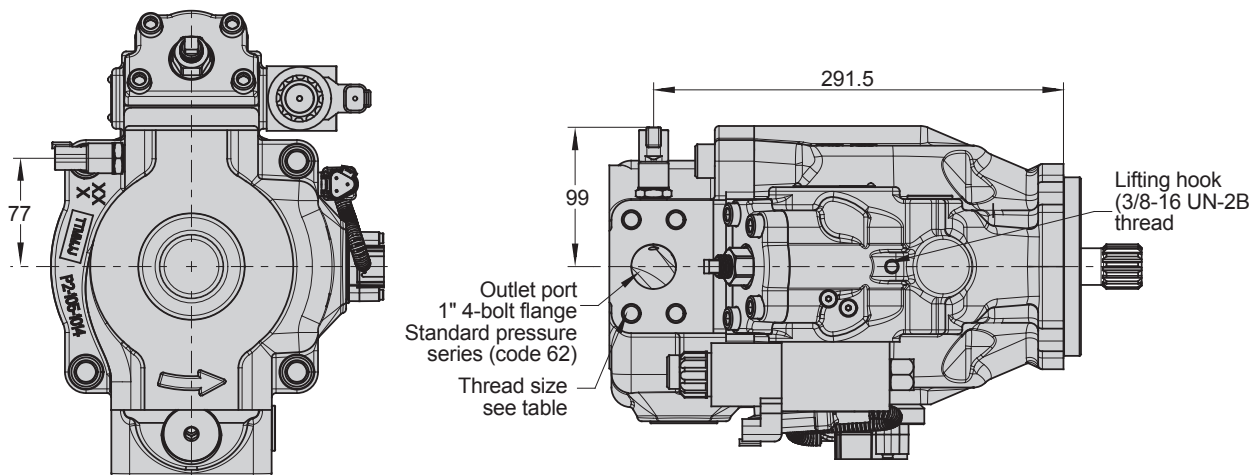
For thru drive dimensions and shaft information please check catalogue **MSG30-2800/UK** (Axial Piston Pumps – Series P2 / P3).

DIMENSIONS

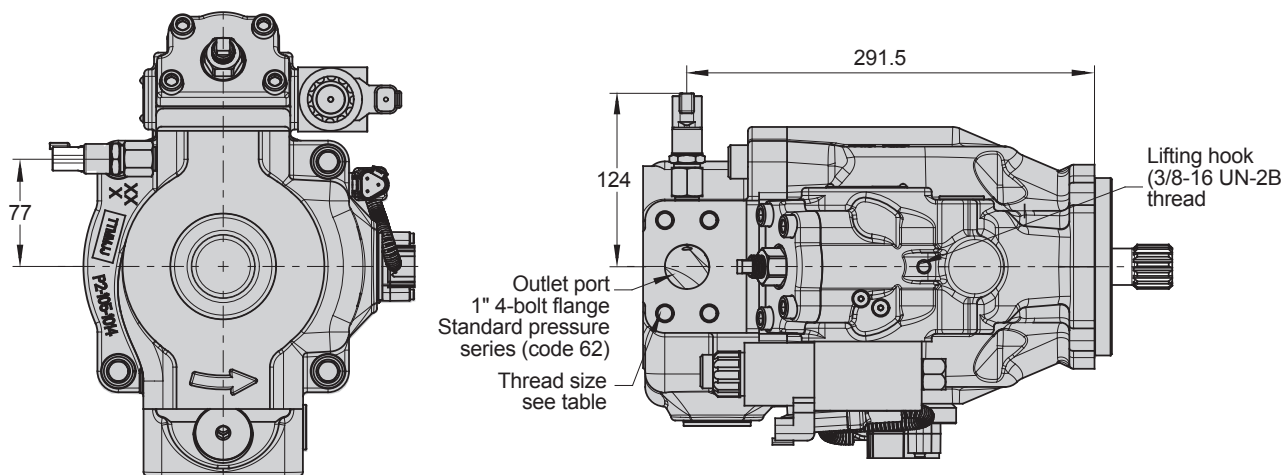
eP2105 w/ pressure sensor

Pump shown is a CW rotation eP2105 with proportional control valve, swash angle sensor and pressure sensor.

Port option C (pump with UNC threads)



Port option D (pump with metric threads)



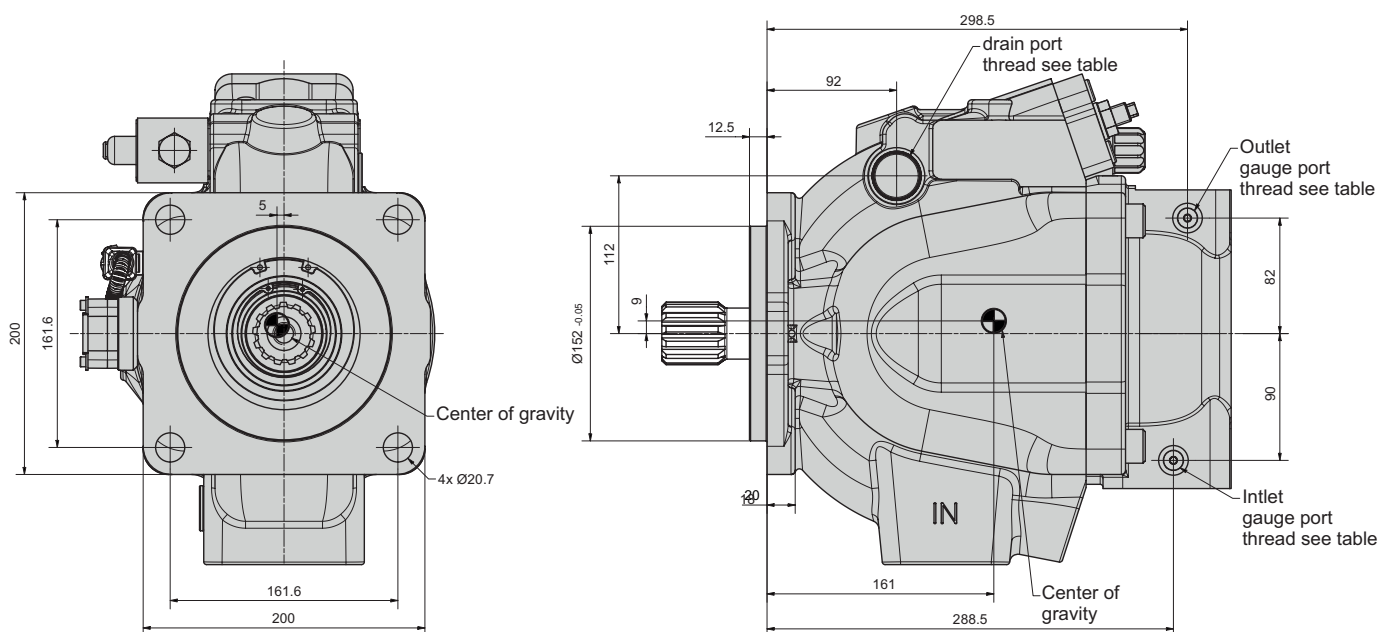
DIMENSIONS

eP2145

Pump shown is a CW rotation eP2145 with proportional control valve and swash angle sensor. Dimensions for EC and EF control option are identical.

CCW pump will have inlet and outlet gage port on opposite side of rear cover.

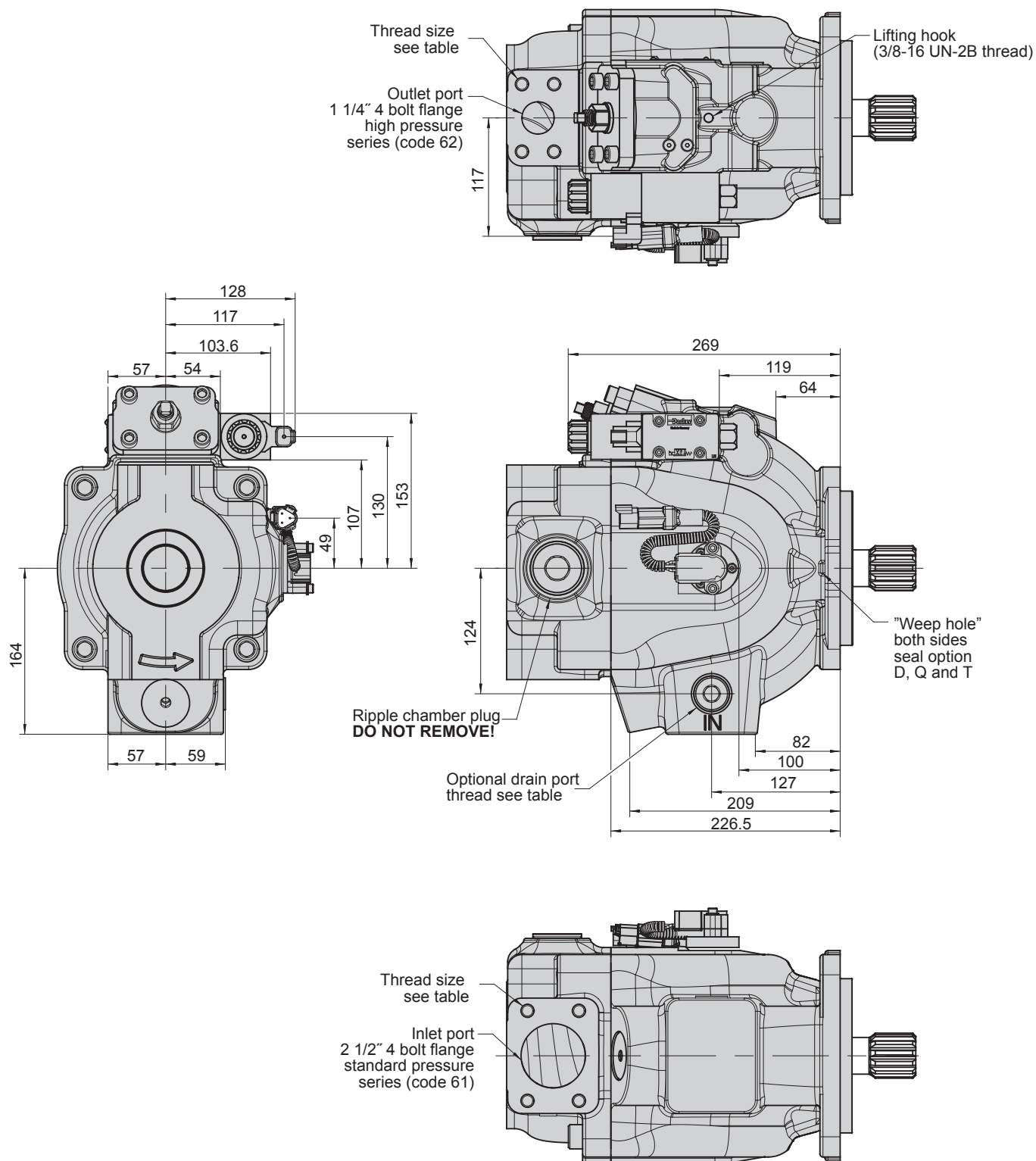
If required by installation the control valve and the swash angle sensor can be positioned at opposite side of the pump. Please consult manufacturer for details.



| Port & threads option | Drain port | Inlet port | Outlet port | Inlet & outlet gage port |
|-----------------------|---|------------|-------------|---|
| A / C (UNC) | SAE-12 straight thread / O-ring port: 1-1/16-12 thread | 1/2-13 UN | 1/2-13 UN | SAE-4 straight thread / O-ring port: 7/16-20 UN thread |
| B / D (metric) | ISO 6149 straight thread / O-ring port: M27 x 2 thread | M12 x 1.75 | M12 x 1.75 | ISO 6149 straight thread / O-ring port: M12 x 1.5 thread |

DIMENSIONS

eP2145



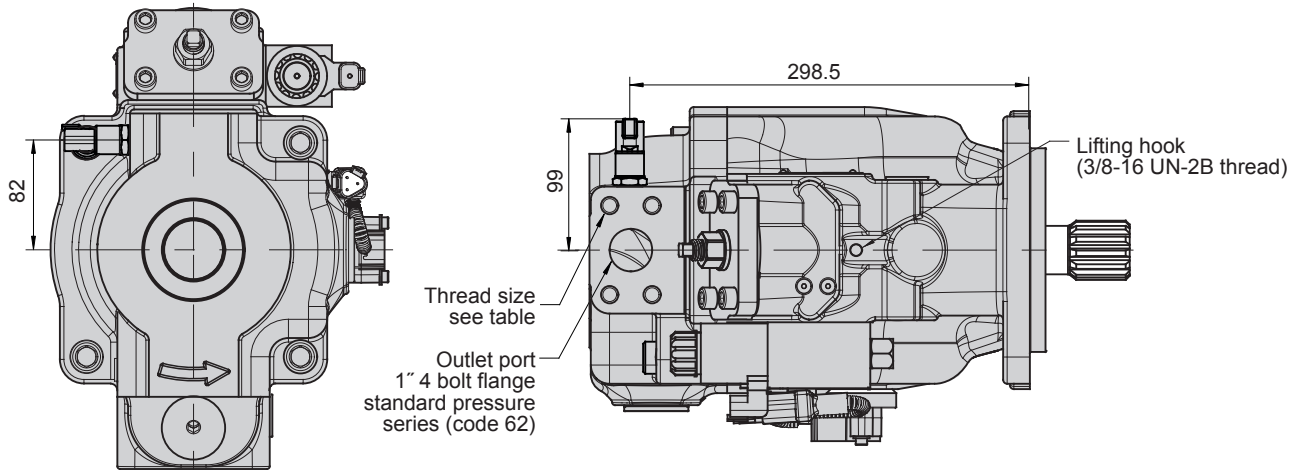
For thru drive dimensions and shaft information please check catalogue **MSG30-2800/UK**
(Axial Piston Pumps - Series P2 / P3).

DIMENSIONS

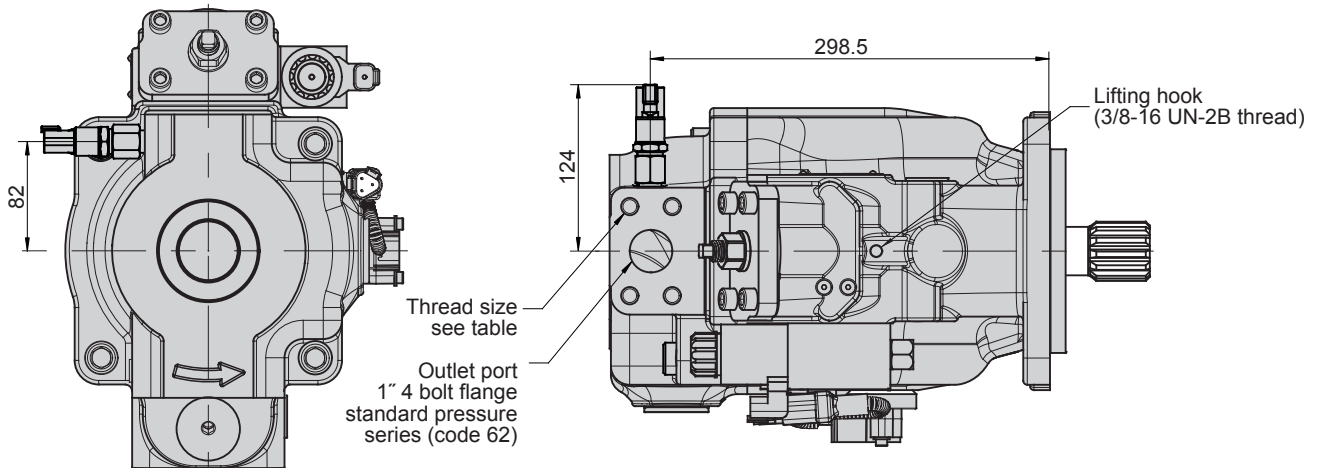
eP2145 w/ pressure sensor

Pump shown is a CW rotation eP2145 with proportional control valve, swash angle sensor and pressure sensor.

Port option C (pump with UNC threads)



Port option D (pump with metric threads)



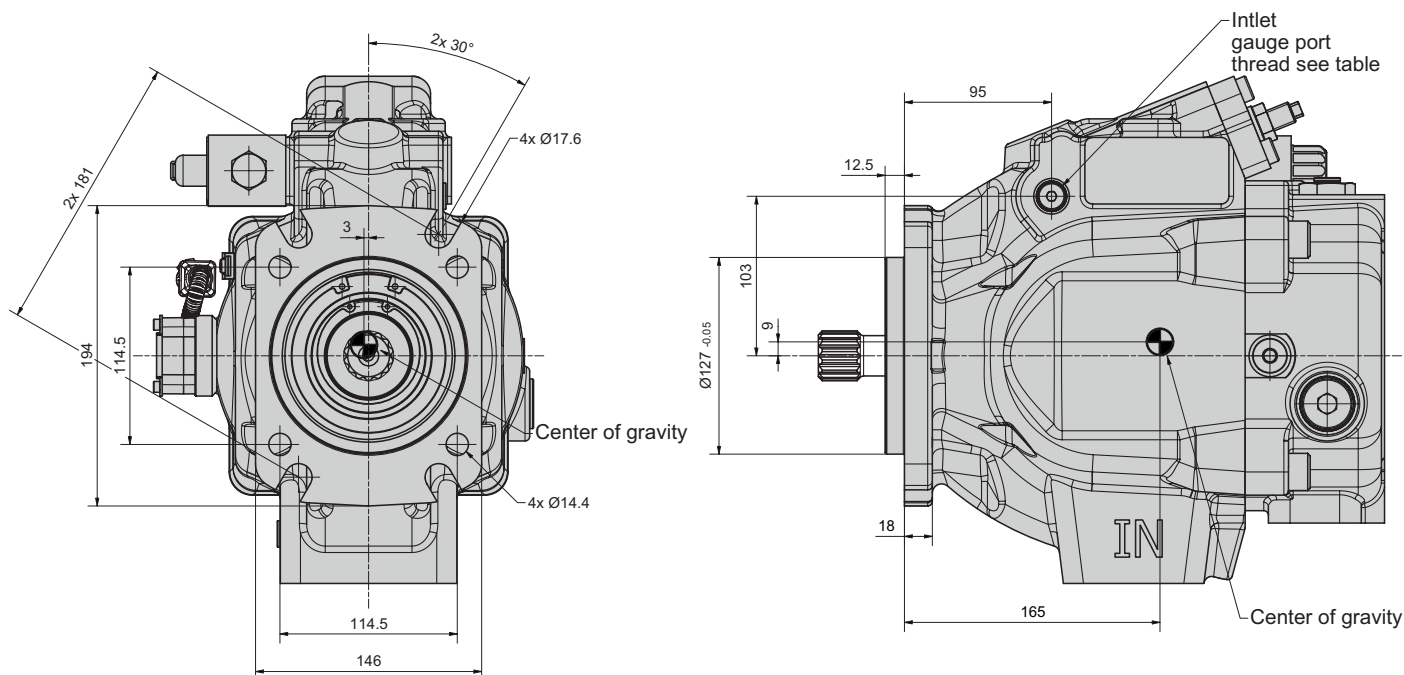
DIMENSIONS

eP3105

Pump shown is a CW rotation eP3105 with proportional control valve and swash angle sensor. Dimensions for EC and EF control option are identical.

CCW pump will have inlet and outlet gage port on opposite side.

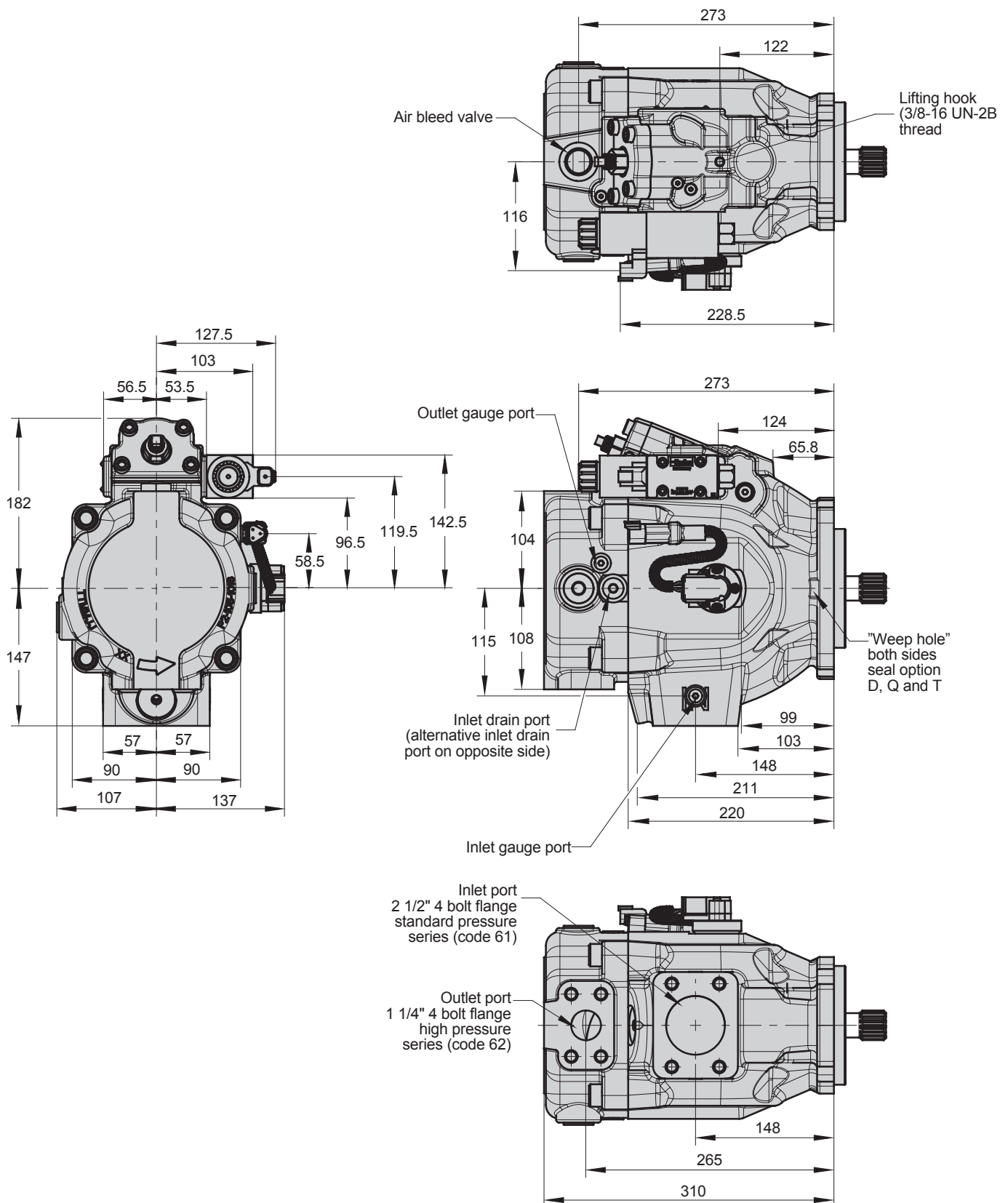
If required by installation the control valve and the swash angle sensor can be positioned at opposite side of the pump. Please consult manufacturer for details.



| Port & threads option | Drain port | Inlet port | Outlet port | Inlet & outlet gage port |
|-----------------------|---|------------|-------------|---|
| A / C (UNC) | SAE-8 straight thread / O-ring port: 3/4-16 thread | 1/2-13 UN | 1/2-13 UN | SAE-4 straight thread / O-ring port: 7/16-20 UN thread |
| B / D (metric) | ISO 6149 straight thread / O-ring port: M18 x 1.5 thread | M12 x 1.75 | M12 x 1.75 | ISO 6149 straight thread / O-ring port: M12 x 1.5 thread |

DIMENSIONS

eP3105



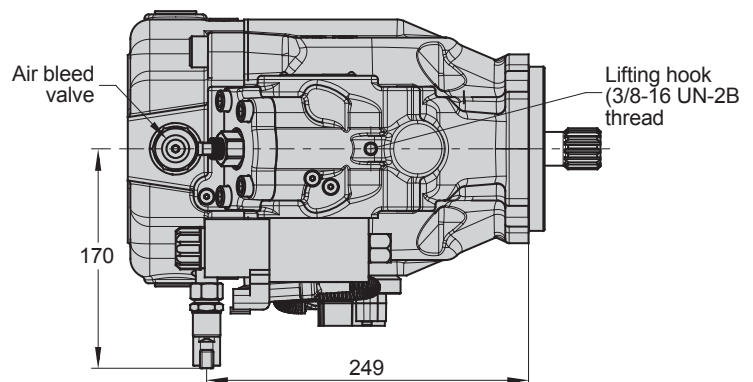
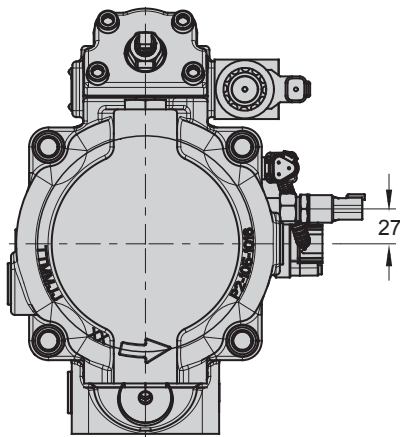
For thru drive dimensions and shaft information please check catalogue **MSG30-2800/UK** (Axial Piston Pumps – Series P2 / P3).

DIMENSIONS

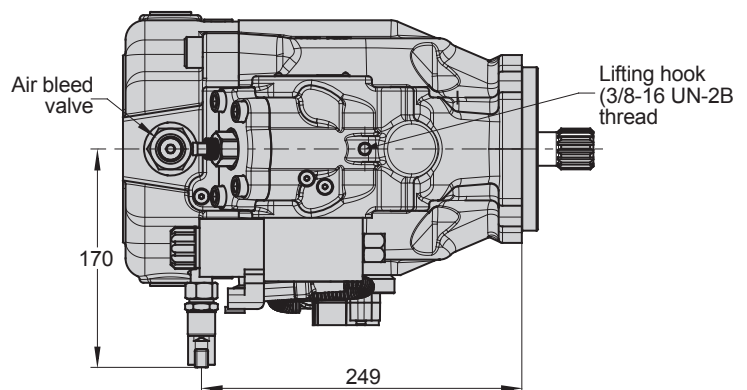
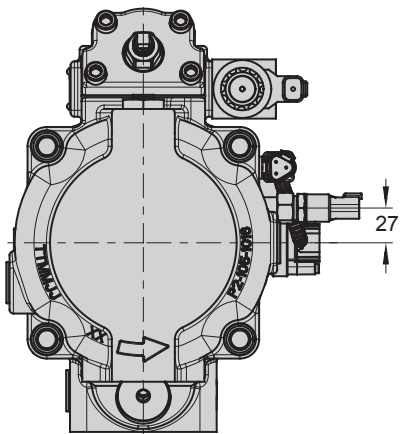
eP3105 w/ pressure sensor

Pump shown is a CW rotation eP3105 with proportional control valve, swash angle sensor and pressure sensor. CCW pump will have inlet and outlet gage port on opposite side.

Port option C (pump with UNC threads)



Port option D (pump with metric threads)



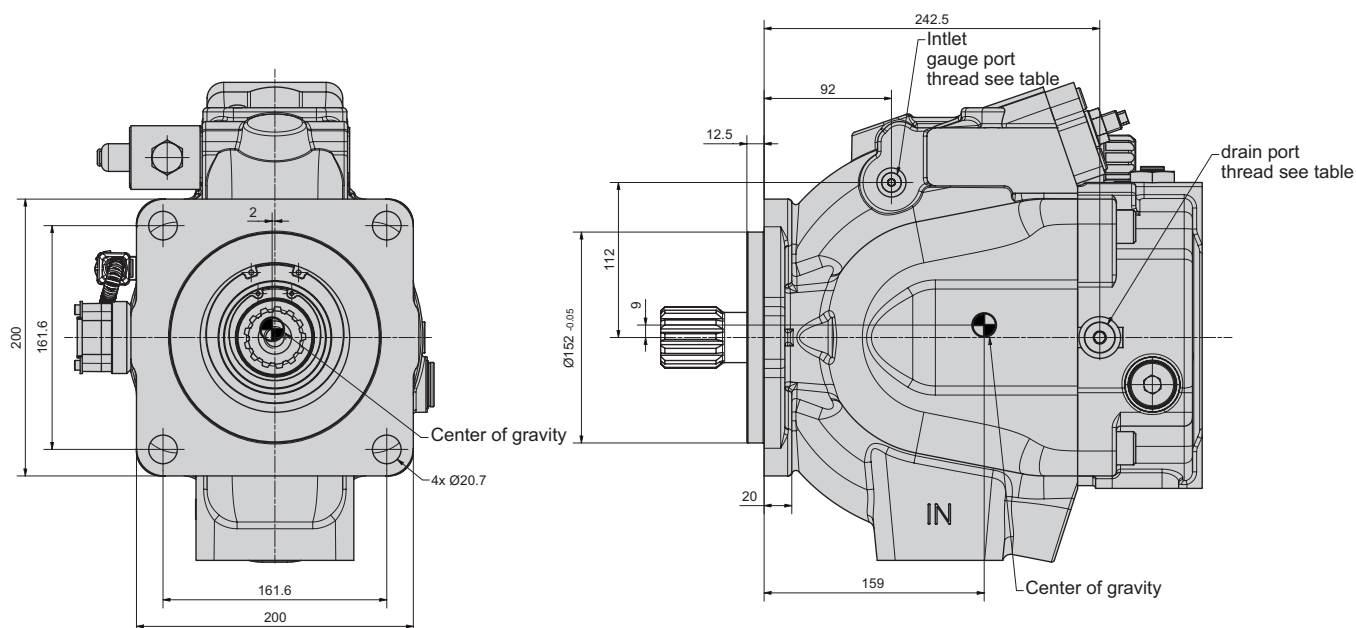
DIMENSIONS

eP3145

Pump shown is a CW rotation eP3145 with proportional control valve and swash angle sensor. Dimensions for EC and EF control option are identical.

CCW pump will have inlet and outlet gage port on opposite side.

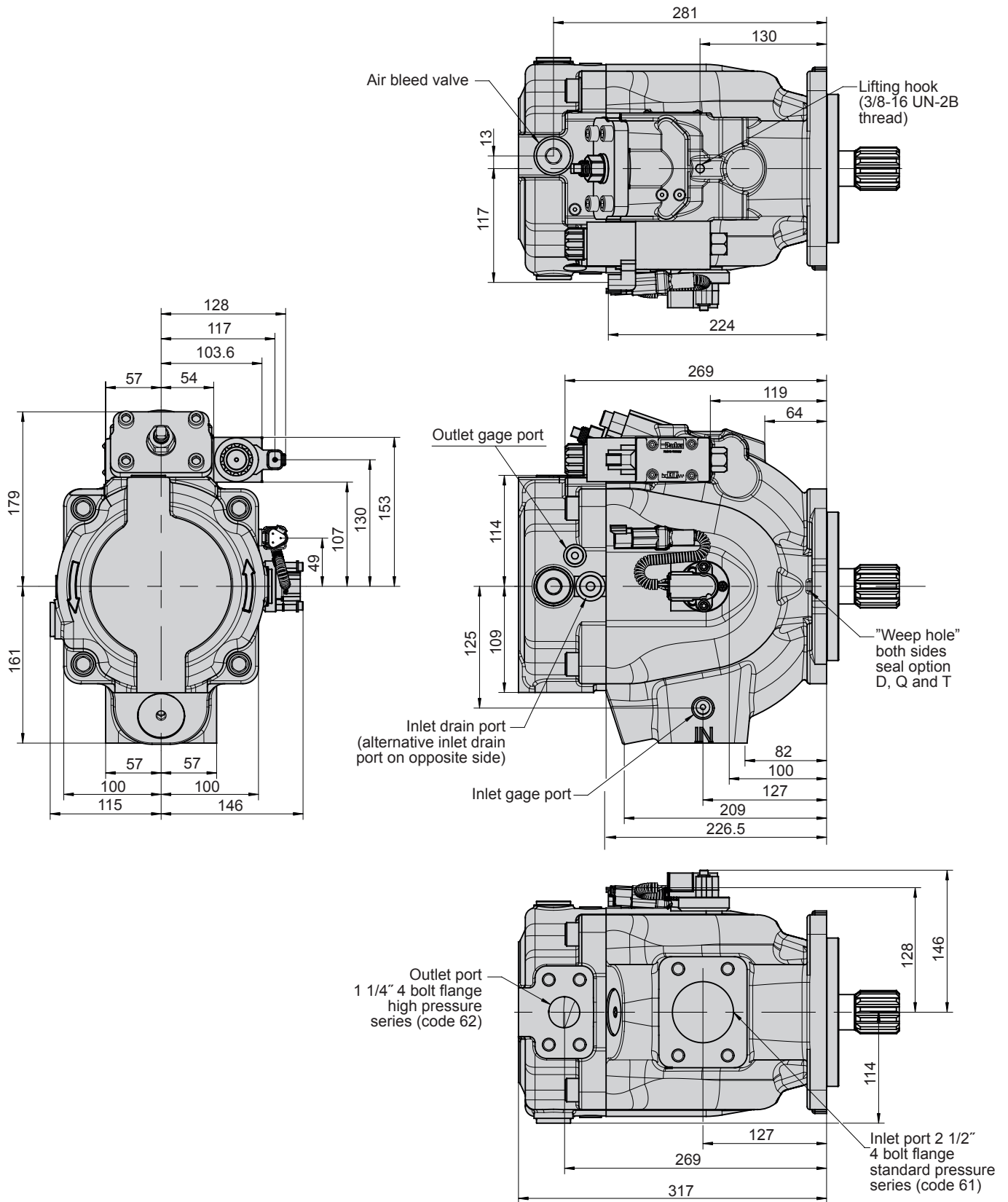
If required by installation the control valve and the swash angle sensor can be positioned at opposite side of the pump. Please consult manufacturer for details.



| Port & threads option | Drain port | Inlet port | Outlet port | Inlet & outlet gage port |
|-----------------------|---|------------|-------------|---|
| A / C (UNC) | SAE-8 straight thread / O-ring port: 3/4-16 thread | 1/2-13 UN | 1/2-13 UN | SAE-4 straight thread / O-ring port: 7/16-20 UN thread |
| B / D (metric) | ISO 6149 straight thread / O-ring port: M18 x 1.5 thread | M12 x 1.75 | M12 x 1.75 | ISO 6149 straight thread / O-ring port: M12 x 1.5 thread |

DIMENSIONS

eP3145



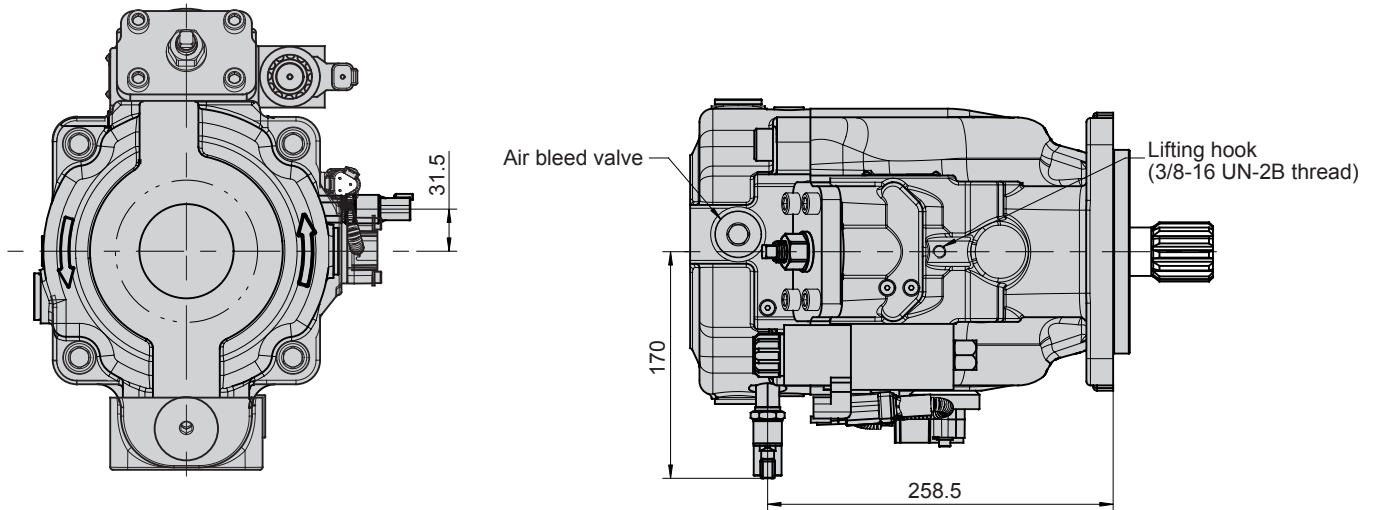
For thru drive dimensions and shaft information please check catalogue **MSG30-2800/UK** (Axial Piston Pumps - Series P2 / P3).

DIMENSIONS

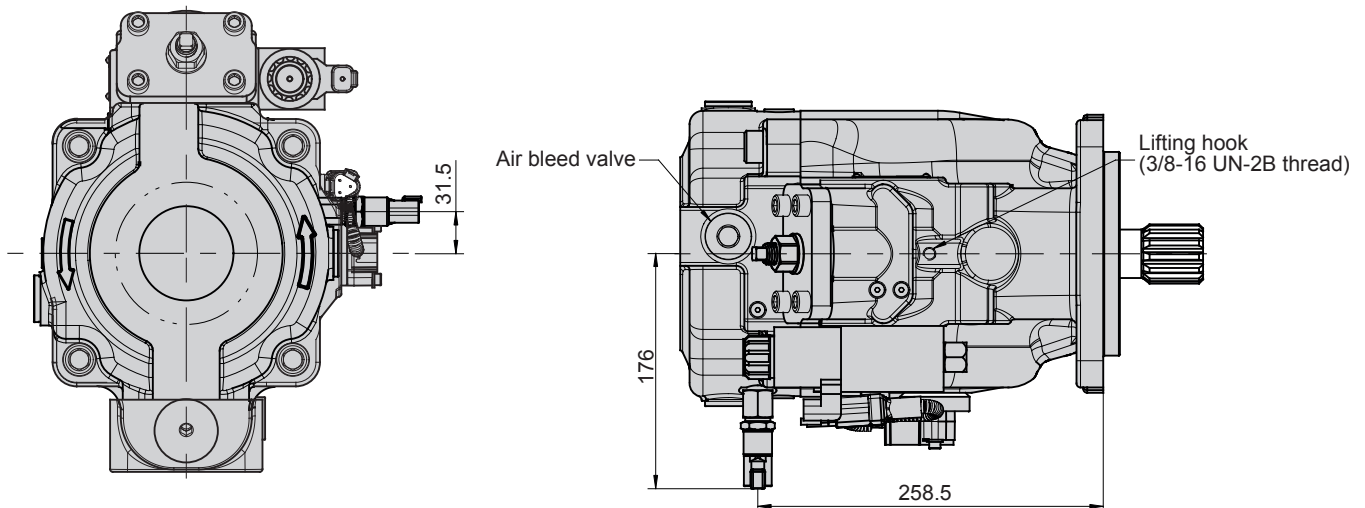
eP3145 w/ pressure sensor

Pump shown is a CW rotation eP3145 with proportional control valve, swash angle sensor and pressure sensor. CCW pump will have inlet and outlet gage port on opposite side.

Port option C (pump with UNC threads)



Port option D (pump with metric threads)



GENERAL INSTALLATION INFORMATION

Recommended hydraulic fluids

The fluid recommended for use in these pumps has a petroleum base and contains agents which provide oxidation inhibition and anti-rust, anti-foam and de-aerating properties as described in PARKER standard HF-1. Where anti-wear additive fluids are specified, see PARKER standard HF-0.

Hydraulic fluid cleanliness level

For maximum component life and reliability a cleanliness level of 18/16/13 (acc. to ISO 4406) is recommended for eP2 / eP3.

Viscosity

Minimum viscosity for short periods:
10mm²/s (cSt)

Recommended continuous operating viscosity:
[15...40] mm²/s (cSt)

Maximum cold start viscosity:
1000 mm²/s (cSt)

Temperature

Check temperature range of selected seal material and compare with maximum system and ambient temperature.

The following limitations refer to average case drain temperature (measured at drain port), which can be up to 20 °C higher than in the reservoir:

| Sealing option | Tmin [°C] | Tmax [°C] |
|----------------|-----------|-----------|
| N / D | -25 | +90 |
| B / Q | -40 | +90 |
| V / T | -25 | +110 |

Shaft Loads

Please strictly follow the instructions of the coupling / PTO supplier regarding axial clearance, axial alignment and angular tolerances. The drive shaft should only carry torque. Units subjected to radial loads require the installation of an outboard bearing. Axial loads are not permitted.

Related Documents

For further information on Installation, start up procedure and trouble shooting please check document **HY30-2901-INST**.

**WARNING – USER RESPONSIBILITY**

FAILURE OR IMPROPER SELECTION OR IMPROPER USE OF THE PRODUCTS DESCRIBED HEREIN OR RELATED ITEMS CAN CAUSE DEATH, PERSONAL INJURY AND PROPERTY DAMAGE.

- This document and other information from Parker-Hannifin Corporation, its subsidiaries and authorized distributors provide product or system options for further investigation by users having technical expertise.
- The user, through its own analysis and testing, is solely responsible for making the final selection of the system and components and assuring that all performance, endurance, maintenance, safety and warning requirements of the application are met. The user must analyze all aspects of the application, follow applicable industry standards, and follow the information concerning the product in the current product catalog and in any other materials provided from Parker or its subsidiaries or authorized distributors.
- To the extent that Parker or its subsidiaries or authorized distributors provide component or system options based upon data or specifications provided by the user, the user is responsible for determining that such data and specifications are suitable and sufficient for all applications and reasonably foreseeable uses of the components or systems.

Offer of Sale

Please contact your Parker representation for a detailed "Offer of Sale".

Parker Hannifin Corporation
Parker Hannifin EMEA Sàrl
European Headquarters
La Tuilière 6 Etoy
Switzerland CH-1163
www.parker.com

Catalog MSG30-2900

April 2025

Your Local Authorized Parker Distributor

© 2025 Parker Hannifin Corporation

