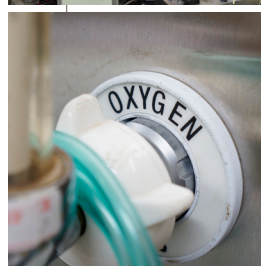


# Carstick+

The enhanced version of Carstick® range



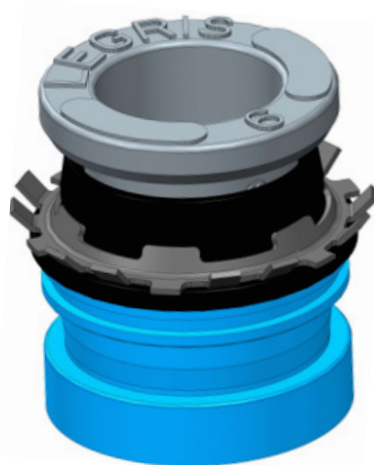
## Product Features:

Parker Legris Carstick+ is a fully integrated cartridge solution providing instant connection between your housing and O.D. 4mm and O.D. 6mm polymer tubes.

Your housing requires a dedicated cavity where Carstick+ can be inserted. Then, Carstick+ can be connected to various polymer tubes.

Carstick+ can be inserted in a large range of housing materials, including amorphous (non-elastic) polymers.

The cavity dimensions and tolerances are identical whatever the housing material used.



## Markets:

- Food & Beverage
- Thermal Management
- Industrial & Automation
- Life & Science

## Contact Information:

Parker Hannifin Manufacturing France SAS  
**Low Pressure Connectors Division Europe**  
Parc Alcyone – Bat. D  
CS 46911 – 1 rue André et Yvonne Meynier  
35069 Rennes, France  
[LPCE.marketing@parker.com](mailto:LPCE.marketing@parker.com)  
[www.parker.com/LPCE](http://www.parker.com/LPCE)



ENGINEERING YOUR SUCCESS.

# Product Benefits

- + Productivity Saving**  
Single component product for reduced insertion time (2 to 3 times faster than traditional cartridge solutions on the market)
- + Low insertion effort**  
Insertion effort < 20 daN
- + Space Saving**  
Compactness for space-saving: 6 Carstick+ versus 4 fittings at the same place
- + Universal Cavity (no groove)**  
Carstick+ can be inserted in various materials without any specific development.  
A single product and cavity are required whatever the housing materials.
- + Fluid Integrity**  
The seal is the only component to be in contact with the media.  
No need to worry about the other components compatibility.
- + Removable**  
Carstick+ can be easily removed in case of failure during the insertion.  
The cavity is reusable so the device is not scrapped.
- + Ready-to-use Packaging**  
50 pieces packaged in a single rigid plastic tube.  
This unique solution protects Carstick+ from damage, avoids component loss, and facilitates the insertion process.

# Technical Characteristics

## Working Conditions

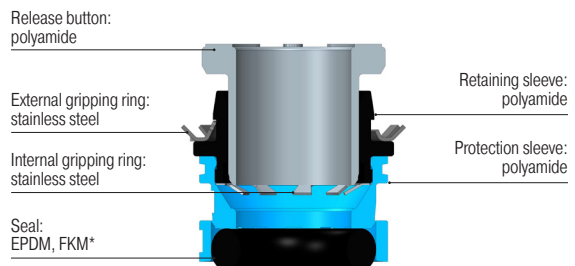
16 bar at room temperature  
10 bar up to 120°C (standard EPDM version)  
10 bar up to 140°C (special FKM version)

## Compatible Fluids

- Drinking waters
- Steam and beverage
- Industrial waters
- Deionized waters
- Dielectric fluids
- Glycols

Other fluids: please contact us

## Component Materials



\*Other seal materials on demand

## Regulations

### Carstick® EPDM

- ISO 14743
- REACH - RoHS
- PED
- FDA: 21 CFR
- 1935/2004/EC
- ACS
- DM 174 (on request)
- WRAS (on request)
- NSF 51
- KTW

### Carstick® FKM

- ISO 14743
- REACH - RoHS
- PED
- FDA: 21 CFR
- 1935/2004/EC
- ACS: on request
- DM 174 (on request)
- WRAS (on request)
- NSF 51

