

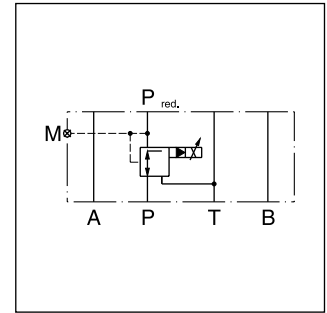
Proportional pressure reducing valves series PRPM keep a constant pressure  $p_{red}$  on the secondary side – independent of pressure fluctuations on the primary side. The integrated pressure relief function obviates the need for an additional pressure relief valve on the secondary side and reliefs to tank, if the reduced pressure rises above the setting pressure.

The proportional pressure reducing valve reduces the pressure in output port  $p_{red}$  in proportion to the solenoid current. The PRPM works practically independent of the inlet pressure. In non-activated mode, the connection to the tank is fully open with a min. pressure corresponding to the spring force.

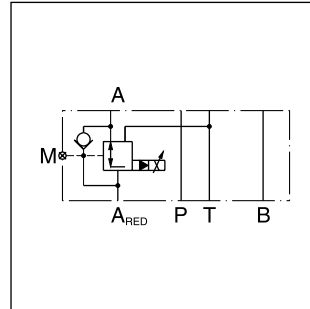
The gauge port is connected to the secondary side. Types A and B have an integrated bypass check valve. The PRPM provides optimum performance in combination with a digital amplifier module PCD00A-400.



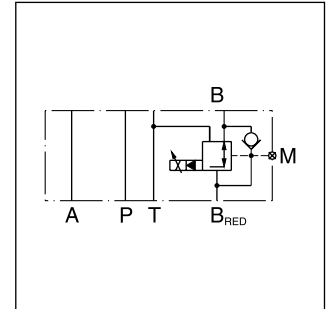
PRPM2PP



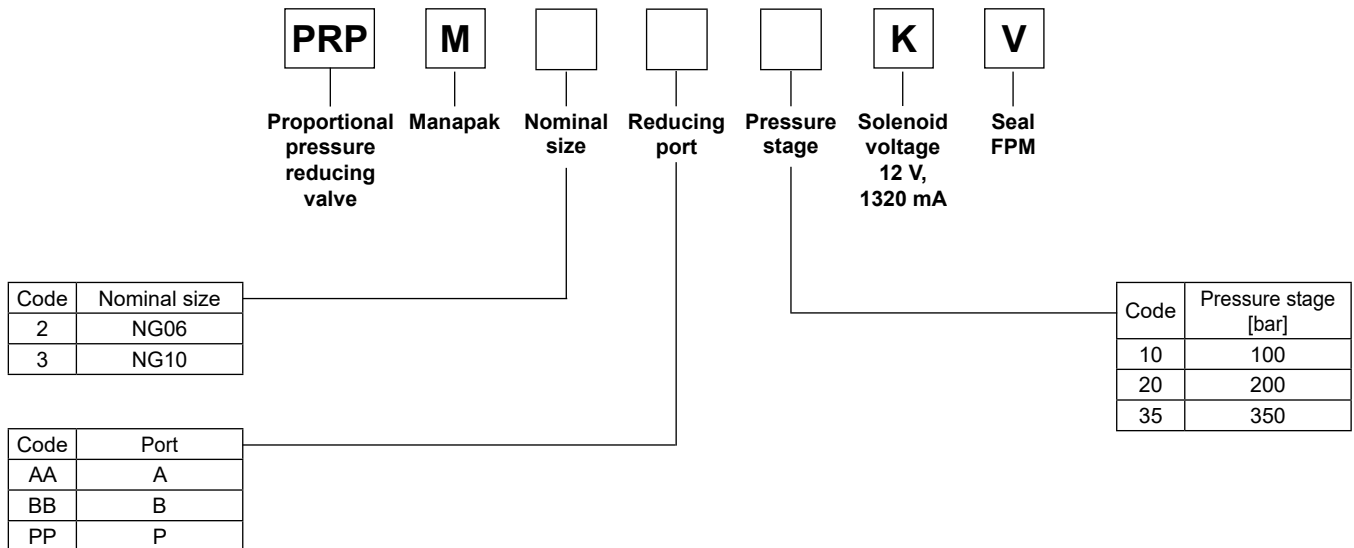
PRPM\*PP



PRPM\*AA



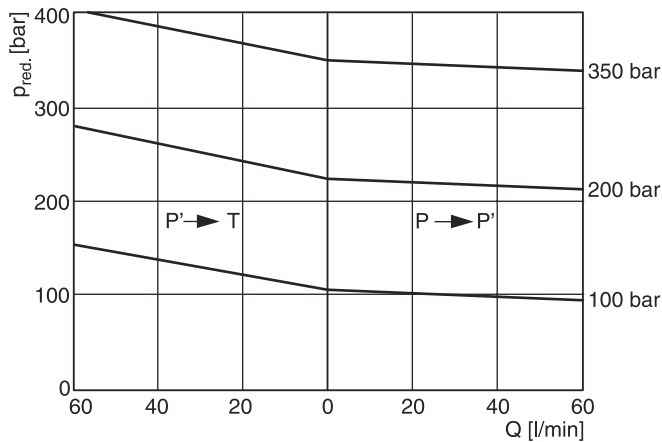
PRPM\*BB

**Ordering code**

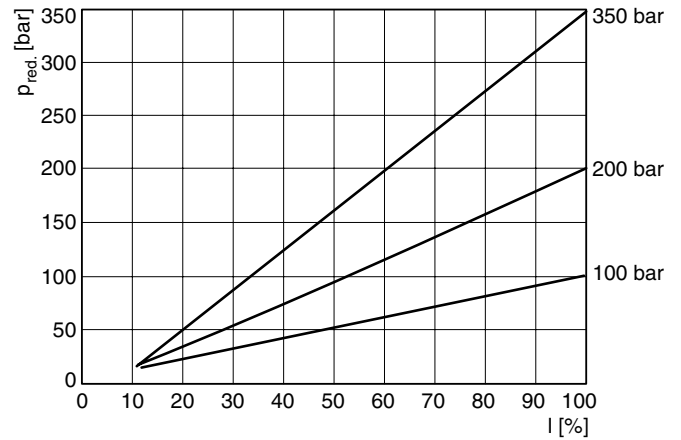
## Technical Data

General			
Design		Pilot operated proportional pressure reducing valve	
Construction		Sandwich type	
Operation		Proportional solenoid	
Size		NG06	NG10
Mounting interface		ISO 4401	
Mounting position		unrestricted	
Ambient temperature		[°C]	-20 ... +60
MTTF <sub>D</sub> value		[years]	75
Weight		[kg]	2.03.2
Hydraulic			
Fluid		Hydraulic oil according to DIN 51524	
Fluid temperature		[°C]	-20 ... +70
Viscosity, permitted recommended	[cSt] / [mm²/s]	20 ... 400	
	[cSt] / [mm²/s]	30 ... 80	
Max. operating pressure		[bar]	350
Reduced nom. pressure		[bar]	100; 200; 350
Max. flow		[l/min]	6060
Pilot flow		see performance curves	
Filtration		ISO 4406 (1999); 18/16/13	
Resolution		[mA]	1 mA
Repeatability		[%]	≤1 (with optimal dither signal)
Hysteresis		[%]	≤4 (with optimal dither signal)
Electrical			
Solenoid		Proportional solenoid, wet-pin push type, pressure tight	
Duty ratio		[%]	100 ED
Protection class		IP65 in accordance with EN 60529 (with correctly mounted plug-in connector)	
Supply voltage		[V]	12 (1320 mA)
Solenoid connection		Connector as per EN 175301-803	
Amplifier		PCD00A-400	

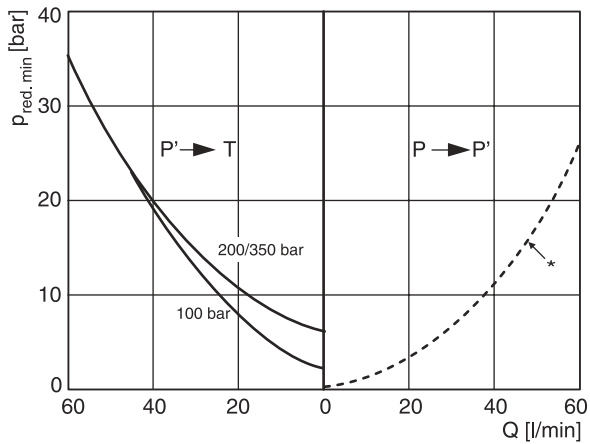
**Pressure/flow NG06/NG10**



**Pressure/adjustment at  $Q=0$  l/min (static)**

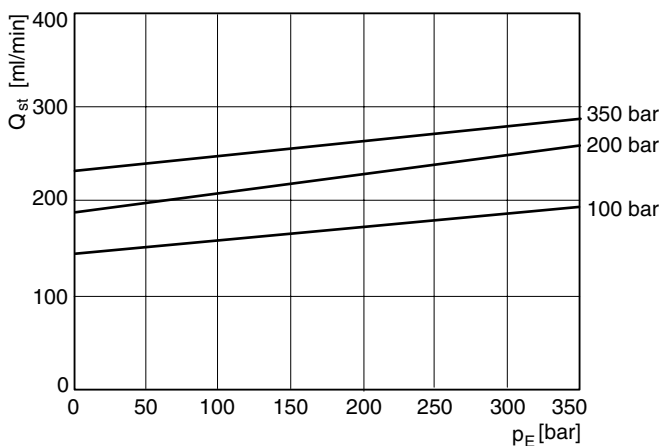


**Pressure/flow (min. adjustable)**

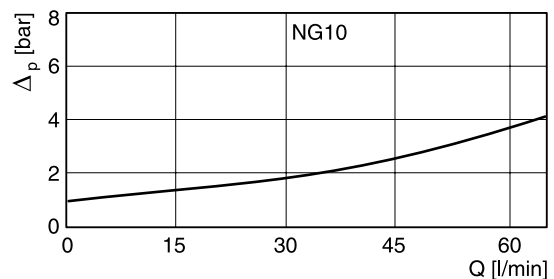
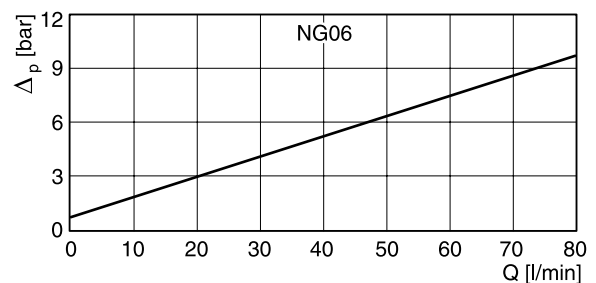


\* Consumption resistance depends on system.

**Pilot flow NG06/NG10**



**Pressure drop/flow over check valve**

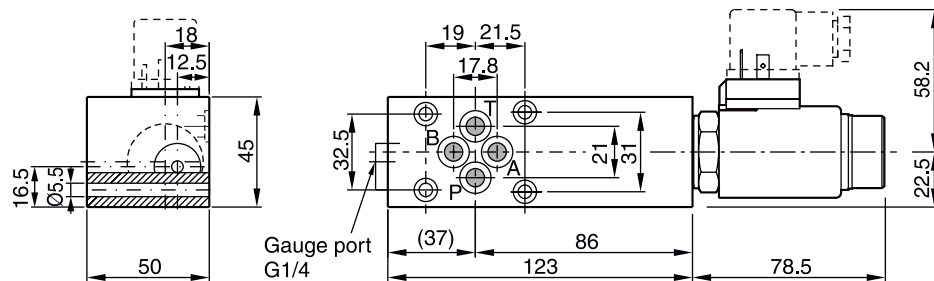


All characteristic curves measured with HLP46 at 50 °C.

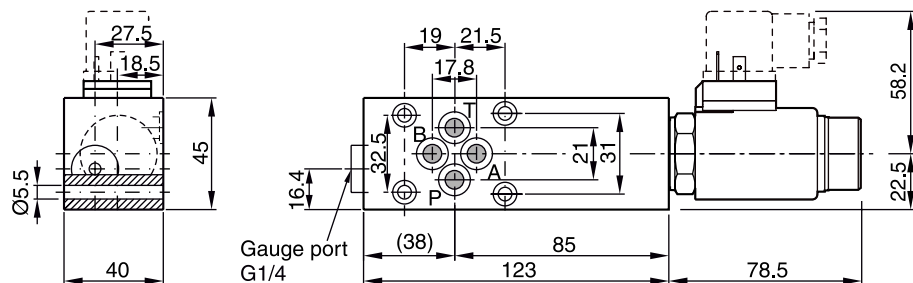
PRPM UK.indd 27.03.24

## Dimensions

## PRPM2AA\*, BB\*\*

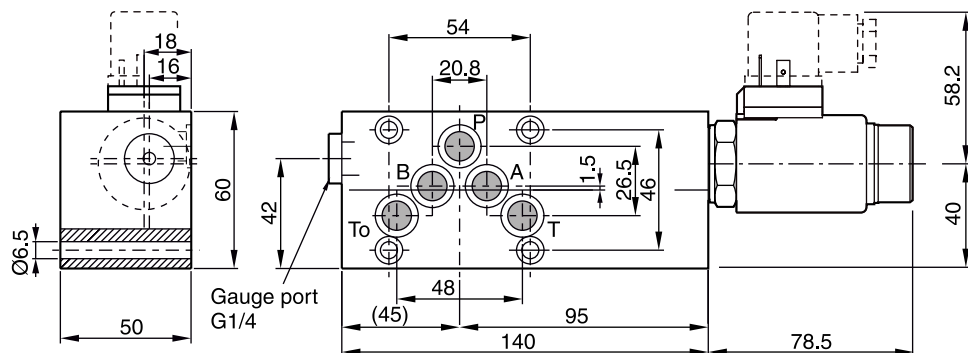


## PRPM2PP\*



7

## PRPM3AA\*, BB\*\*



## PRPM3PP\*

