

Direct operated pressure relief valves series R1E02 are seated type valves typically used for remote control of pilot operated pressure valves or compensators of variable pumps. In applications where the reliability and simplicity of a hydraulic remote control are preferred to an electro-hydraulic system the R1E02 series is an ideal solution.

Features

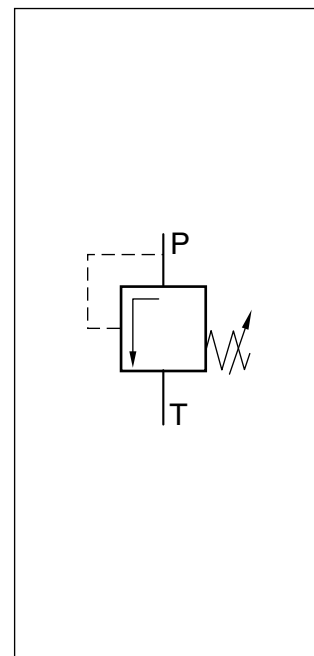
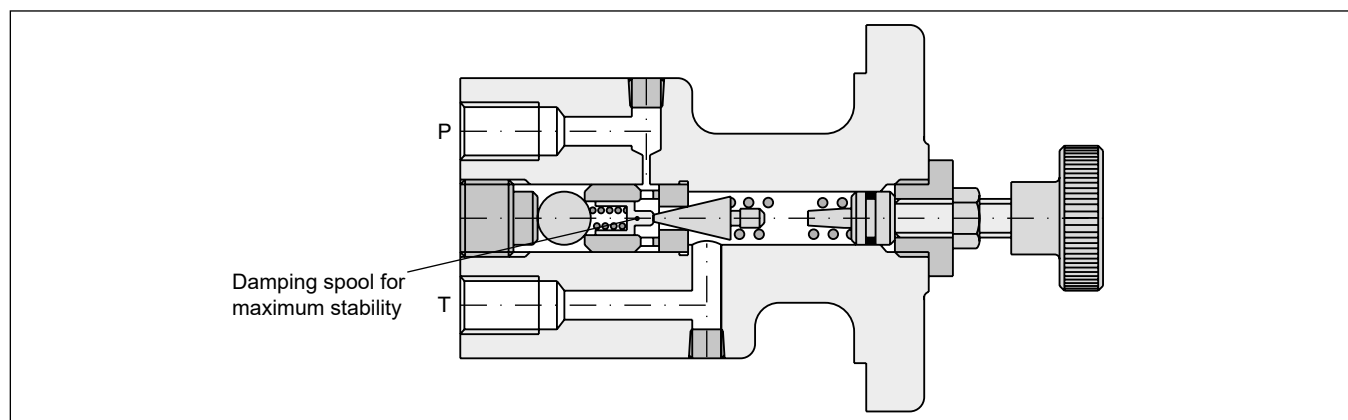
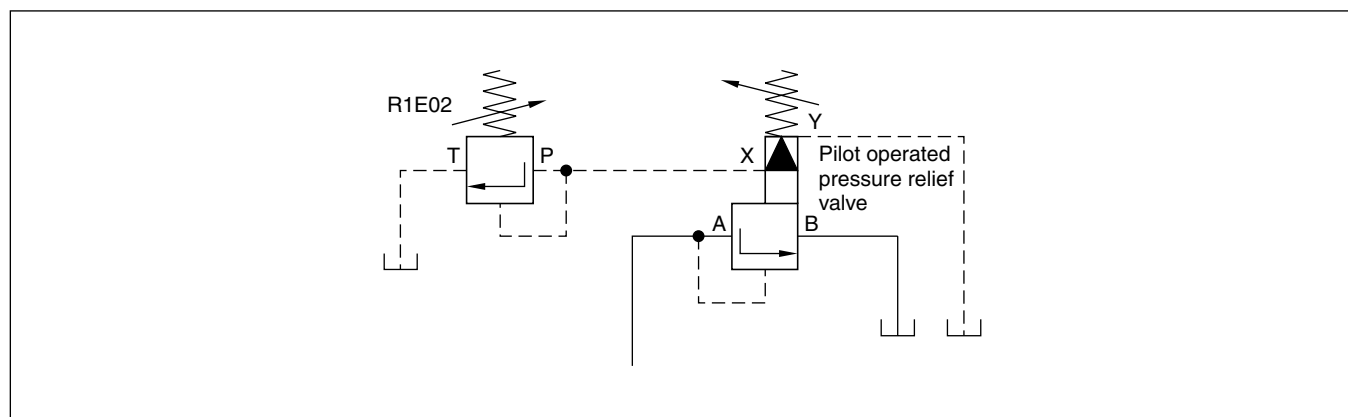
- Seated type valve
- Body variants:
 - front panel mounting
 - subplate mounting
- 3 pressure stages
- 3 adjustment modes:
 - hand knob
 - acorn nut with lead seal
 - cylinder lock



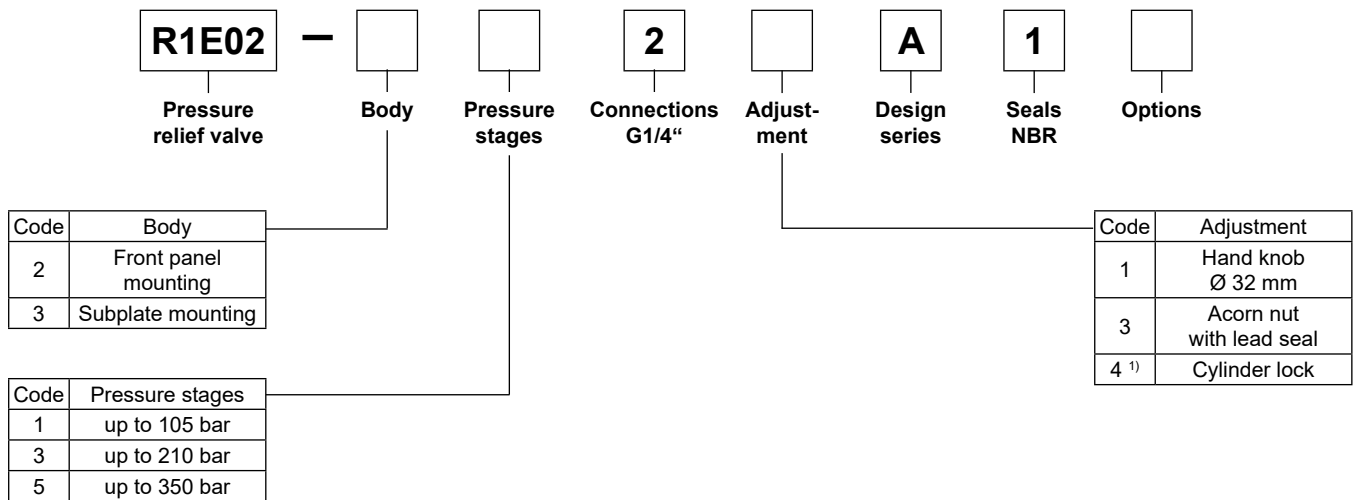
Front panel mounting



Subplate mounting

**4****R1E02, front panel mounting****Typical application as remote pilot valve**

Ordering code

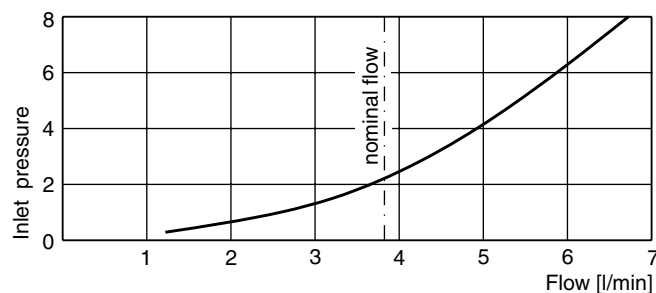


¹⁾ On bodies for subplate mounting use plate S16-64188 if necessary.

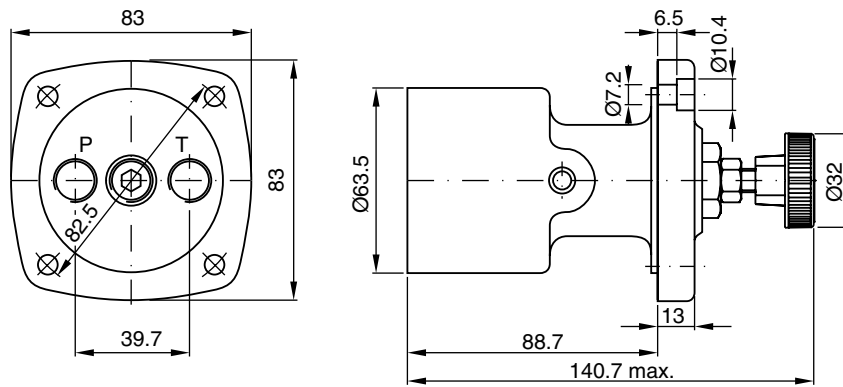
Technical data

General			
Design		Direct operated relief valve, seated type	
Nominal size		1/4"	
Body variants		Front panel mounting	Subplate mounting
Mounting position		unrestricted	
Ambient temperature		[°C]	-20...+60
MTTF _D value		[years]	150
Weight		[kg]	2.11.0
Hydraulics			
Max. operating pressure		[bar]	Port P 350, Port T depressurized
Pressure stages		[bar]	105, 210, 350
Fluid temperature		[°C]	-25...+70
Nominal flow		[l/min]	3.8
Fluid		Hydraulic oil according to DIN 51524	
Minimum setting pressure		[bar]	7
Viscosity	permitted	[cSt] / [mm²/s]	20...400
	recommended	[cSt] / [mm²/s]	30...80
Filtration		ISO 4406; 18/16/13	

Typical system pressure in relation to flow

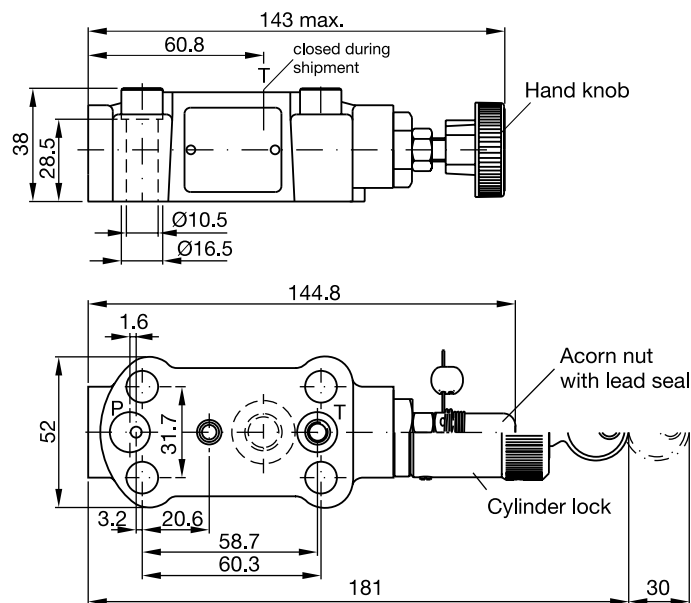


Measured with HLP46 at 50 °C.

Front panel mounting

Ports P and T: G1/4"

○ Kit

S26-58466-0**4****Subplate mounting**

○ Kit

S16-91963-0