

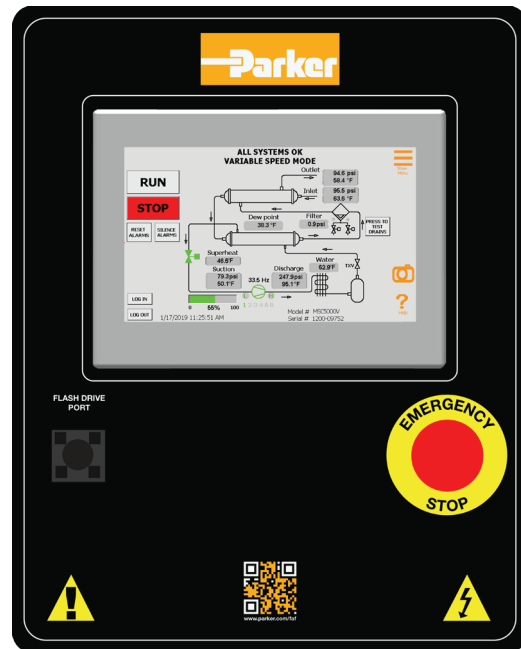
Magnum PLC Controller

Controls for all Magnum Dryers from 4000 to 25000 scfm, including optional Variable Speed Drive models



COMPRESSED AIR TREATMENT REDEFINED

Parker's industry leading Magnum Series Large Capacity Refrigerated Compressed Air Dryers are now more robust and reliable than ever! Introducing the NEW Magnum Series PLC controller with touch panel user interface. The customized Allen-Bradley® PLC controller, designed specifically for Parker's Magnum Series Dryers, offers cutting-edge data trending and logging, which guarantees real-time diagnostics and hassle-free dryer maintenance.



Contact Information:

Parker Hannifin Corporation
Industrial Gas Filtration and Generation Division
4087 Walden Avenue
Lancaster, NY 14086

phone 800 343 4048
www.parker.com/igf

Product Benefits:

- Industry leading Allen-Bradley® PLC controller
- Ensures better operation and increased reliability
- Visual display provides advanced performance monitoring
- Aids in troubleshooting and enhances serviceability
- Comprehensive system alarms maximize dryer uptime
- Simple connectivity via Standard Modbus Communications Protocol



ENGINEERING YOUR SUCCESS.

Product Features

- Allen-Bradley® PLC with touch panel control in NEMA 4 Enclosure (indoor use only)
- 7" HMI full color graphic display
- Main Screen Display includes:
 - Graphical dryer representation with operational status
 - All sensor information (i.e. Dewpoint, Inlet/Outlet Pressure and Temperature, etc.)
 - Load percentage display
- Automatic trending and data logging 24/7, 365 days of all operational information
- User friendly help screens assist in troubleshooting
- Flash drive port for transferring data log and screen shots
- Communications:
 - Remote panel access via Ethernet Modbus - TCP communications port
 - Serial RS485 communications Modbus - RTU port
 - VNC Remote Access
- Two extra user defined 4-20 mA inputs with setpoints and alarms for connection (i.e. flow meter, power meter, etc.)
- Sensors for:
 - Dewpoint Temperature
 - Inlet and Outlet Pressure and Temperature
 - Suction Pressure and Temperature
 - Discharge Pressure
 - Outlet Pressure and Temperature
 - Liquid Line Temperature
 - Differential Pressure Across Dryer
 - Ambient / Water Temperature
- Comprehensive alarms for refrigeration and compressed air systems, includes:
 - High Dewpoint
 - Dryer Overload
 - Low/High Inlet Pressure and Temperature
 - High Ambient/Water Cooling Temperature Warning
 - Demand Drain Alarm
 - High Filter Pressure Drop
 - Low Inlet Pressure
 - High Superheat
 - Alarms/Warnings for all Sensor Faults
 - Bad Pump Down
 - Low Evaporator Temperature
 - Low Suction Pressure
 - High Discharge Pressure
 - Compressor System Faults
 - Compressor Oil Pressure & Level
 - Open Control System Fuse
- Service Maintenance Timer
- Compressor Oil Level Monitor
- Two Programmable Demand Drains with Backup Timers
- Run Status Relay
- Common Alarm Relay
- Remote Operation Switch Inputs

