

Fact Sheet

BHA STS™ 26 TubeFrame SpiroTubeSystem Technology

The STS™ 26 TubeFrame Is A Quick Retrofit For Your DCE Dalamatic® Dust Collector

The Parker Hannifin STS™ 26 TubeFrame consists of 15 SpiroTubes (spiral formed tubes) that are supported in a single, compact frame. The SpiroTubes are sonically welded to ensure airtight construction.

The 26 mm (1.02 in.) diameter of each SpiroTube provides an optimal relationship between the total unit area and the open area between the tubes. This decreases face velocities and increases airflow in four directions between the elements, enabling better control of the airstream velocities and increased dust release capacities.

The STS 26 TubeFrame can be used in new installations or as replacement filter elements in existing Dalamatic®-type filter systems. The one-piece, self-supporting SpiroTubes are made of spun bonded polyester media laminated with BHA® Preveil® ePTFE membrane. STS TubeFrame can operate in temperatures up to 80° C (176F).

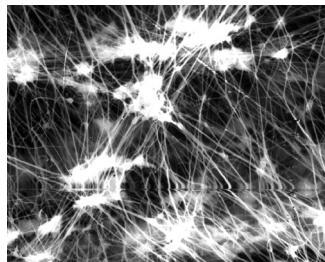
The unique spiral shape and non-stick surface of each SpiroTube provides the best possible dust collection and dust release with a low pressure drop.

Features And Benefits:

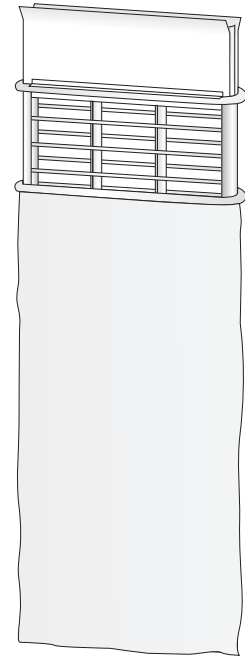
- STS 26 TubeFrame filters provide 25% more filtration area over traditional “envelope” style filters.
- This system operates with an extremely low pressure drop, even at high air-to-cloth ratios.
- SpiroTubes allow extremely low emissions - less than 1.0 mg/Nm³. This 99.99+% efficiency is a result of the spun bonded filter media and the BHA Preveil ePTFE membrane.
- Excellent dust release characteristics allow for improved cleaning, increased airflow, and reduced differential pressure.
- The one-piece STS design reduces installation time and maintenance requirements.
- STS SpiroTube systems can operate at higher than normal air-to-cloth ratios for increased throughput.

BHA Preveil ePTFE Membrane Laminate

The STS filters from Parker Hannifin use our ePTFE membrane, BHA Preveil which provides the best available control technology for fine particulate filtration.



BHA Preveil microporous ePTFE membrane magnified 2500x. The laminate is standard on all STS SpiroTubeSystem filter products.



BEFORE:

The original OEM design includes a metal cage that must be fitted with an 'envelope' style filter bag that slips over the frame.



AFTER:

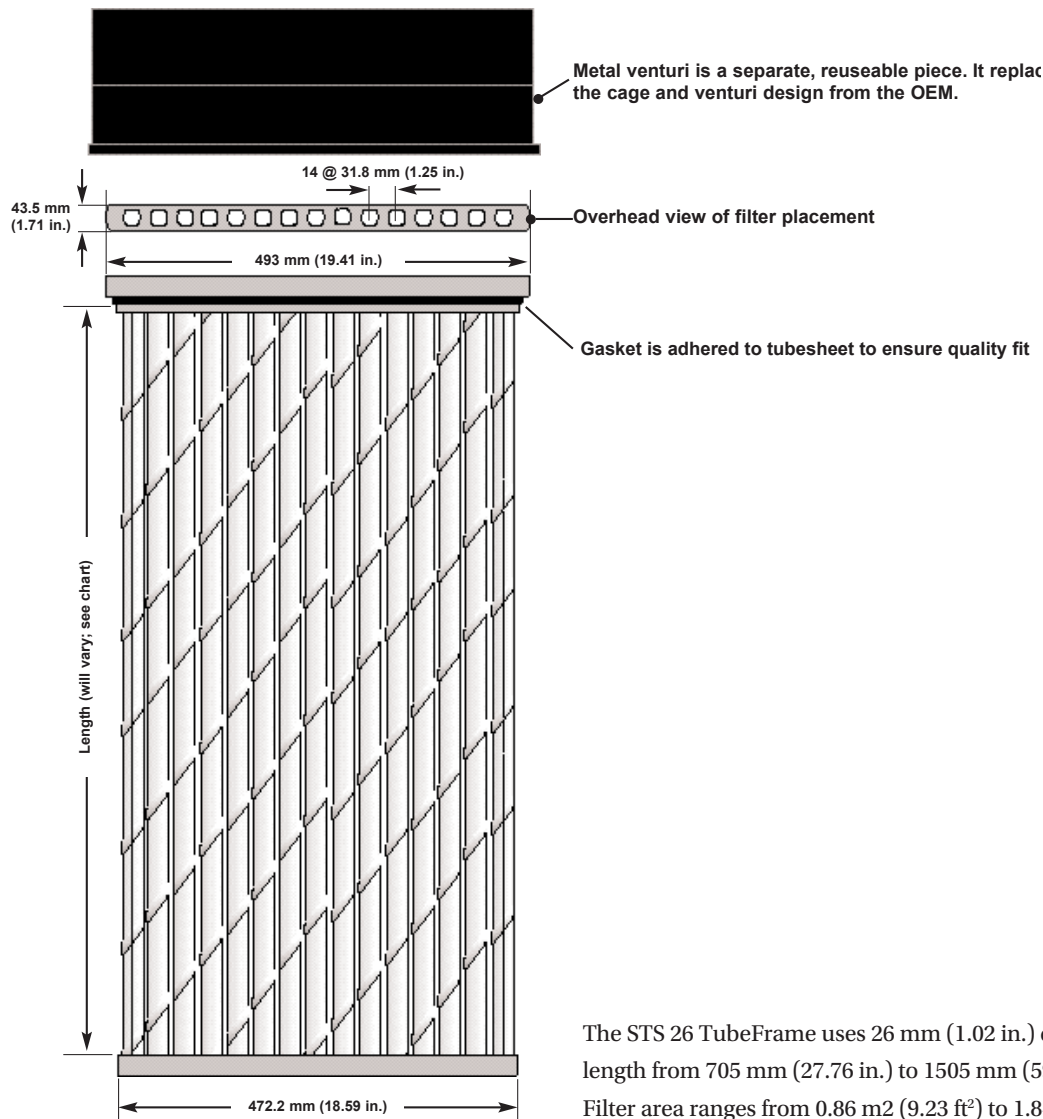
Parker Hannifin STS 26 TubeFrame retrofit includes self-supporting SpiroTubes housed in a rigid frame with a venturi attachment. One-piece installation is quick and easy.



Fact Sheet

BHA STS™ 26 TubeFrame SpiroTubeSystem Technology

STS™ 26 TubeFrame Technical Data



Length

STS 26 Model No.	No. Tubes	Tubes	Total	Filtration Area
STS 26 - 15 - 0700	15	660 mm 25.98 in.	705 mm 27.76 in.	0.86 m ² 9.23 ft ²
STS 26 - 15 - 1000	15	960 mm 37.80 in.	1005 mm 39.57 in.	1.23 m ² 13.24 ft ²
STS 26 - 15 - 1250	15	1210 mm 47.64 in.	1255 mm 49.40 in.	1.53 m ² 16.46 ft ²
STS 26 - 15 - 1500	15	1460 mm 57.48 in.	1505 mm 59.25 in.	1.84 m ² 19.8 ft ²
Venturi	(separate piece that is reusable; one time purchase to replace costly OEM cage and venturi system)			

