

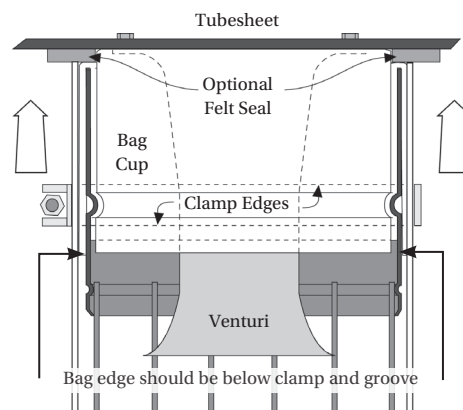
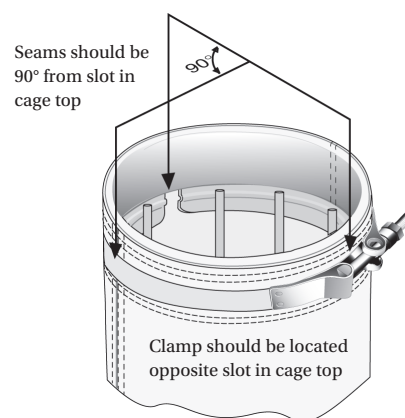
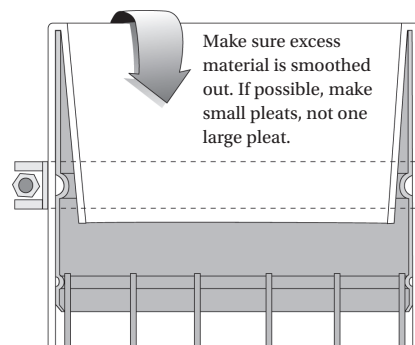
Instruction Sheet

Installing Raw Edge Filter Bags on Roll Band Top Cage for Bottom Load Collectors

Before bagging your bottom load dust collector, verify which style of cages you have and follow the corresponding instructions. Instructions for the ring top style cage are on the next page. If you are installing a raw edge bag, a T-bolt clamp is recommended to prevent leakage.

- Installation of the bag typically requires two people. Begin at the bottom and slide the bag horizontally along the cage. One person should feed the bag from the bottom while the other person slowly slides the top part of the bag along the cage. Hold the bag straight out to prevent sharp creases as it passes over the cage pan. The bag should be installed so the bag seam is not directly over the gap of a split collar cage top (i.e. at a 90° angle to the split in the collar of the cage). Care should be taken to ensure the seam of the bag is straight and not spiraled around the cage.
- Fold the sleeve top of the bag inside the cage. The sleeve should extend down inside the roll band top below the first groove. Smooth the folded fabric and distribute any excess fabric into several small pleats instead of one large one.
- Loosely install a new clamp around the top of the bag/cage combination with T-bolt clamp between the gap in the roll band top and the bag seam. The clamp should be seated over the first groove, just tight enough to stay in place. Install a new optional felt seal around the bag cup. This seal further helps prevent leakage of fine particulate.
- Slide the bag/cage combination over the bag cup below the tubesheet. The bead on the inside of the cage (the back of the groove) should be squarely in the groove of the bag cup with the fabric of the bag between the cage top and the bag cup.
- Using a socket wrench, tighten the clamp securely, making sure it stays in place over the groove in the cage to prevent leakage. It is important to use greater than usual torque on the clamp for this application. During tightening, rock the cage slightly to ensure the grooves are mating properly. After tightening, you should not be able to rotate the bag and cage by hand. Over tightening can strip the clamp.

NOTE: If the clamp is placed too high, is not tightened adequately or the fabric is not past the groove, leakage may occur.



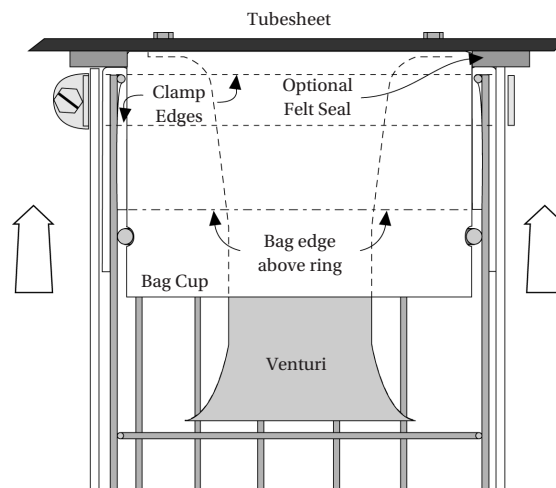
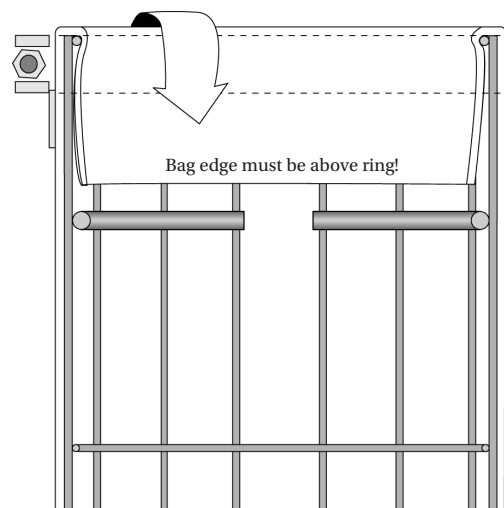
Instruction Sheet

Installing Raw Edge Filter Bags on Roll Band Top Cage for Bottom Load Collectors

Installing Raw Edge Bags with T-Bolt Clamp and OEM-style Annular Ring Cage for Bottom Load Collectors

If you are installing a raw edge bag, a T-bolt clamp is recommended to prevent leakage.

- Installation of the bag typically requires two people. Begin at the bottom and slide the bag horizontally along the cage. One person should feed the bag from the bottom while the other person slowly slides the top part of the bag along the cage. Hold the bag straight out to prevent sharp creases as it passes over the cage pan. The bag should be installed so the bag seam is not directly over the gap of a split collar cage top (180° opposite is recommended). Care should be taken to ensure the seam of the bag is straight and not spiraled around the cage.
- Fold the excess material of the bag inside the cage. The excess material sleeve should extend down inside the cage just short of the large ring. Smooth the folded fabric and distribute any excess fabric into several small pleats instead of one large one.
- Loosely install a new clamp around the top of the bag/cage combination with screw positioned midway between the gap in the ring top and the bag seam. The clamp should be on the cage top, just tight enough to stay in place. Install a new optional felt seal around the bag cup. This seal further helps prevent leakage of fine particulate.
- Slide the bag/cage combination over the bag cup which is below the tubesheet. The ring on the inside of the cage should be squarely in the groove of the bag cup with the fabric of the bag sandwiched between the cage top and the bag cup.
- Using a socket wrench, tighten the clamp securely, making sure it stays in place centered between the ring and cage top. To prevent leakage, it is important to use greater than usual torque on the clamp for this application. During tightening, rock the cage slightly to ensure the ring and groove is mating properly. After tightening, you should not be able to rotate the bag and cage by hand. Over tightening can strip the clamp.



DO NOT RE-INSTALL USED CLAMPS

