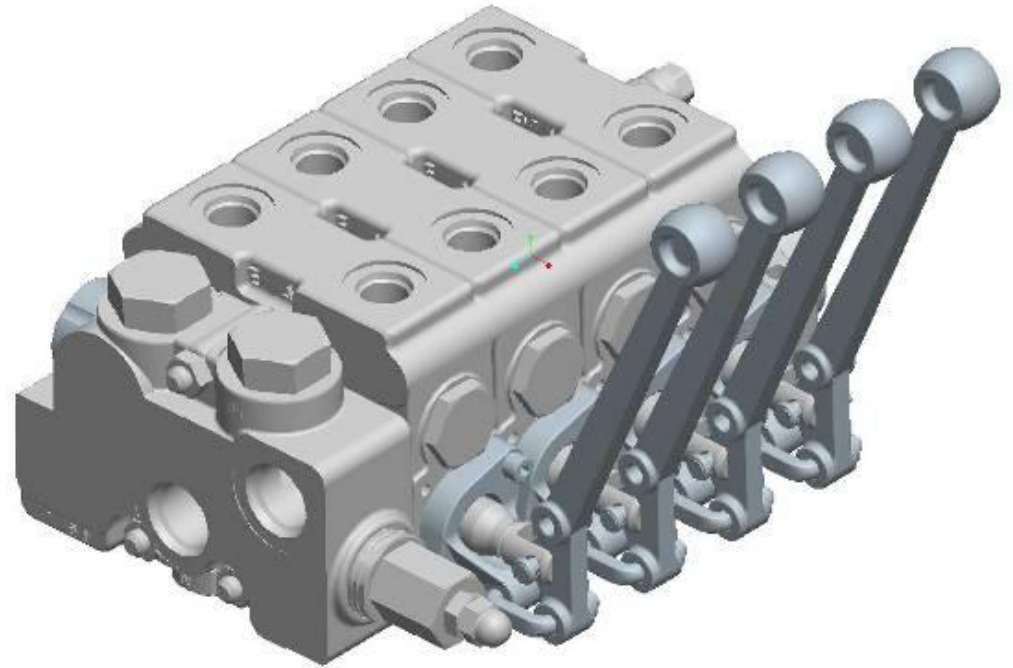


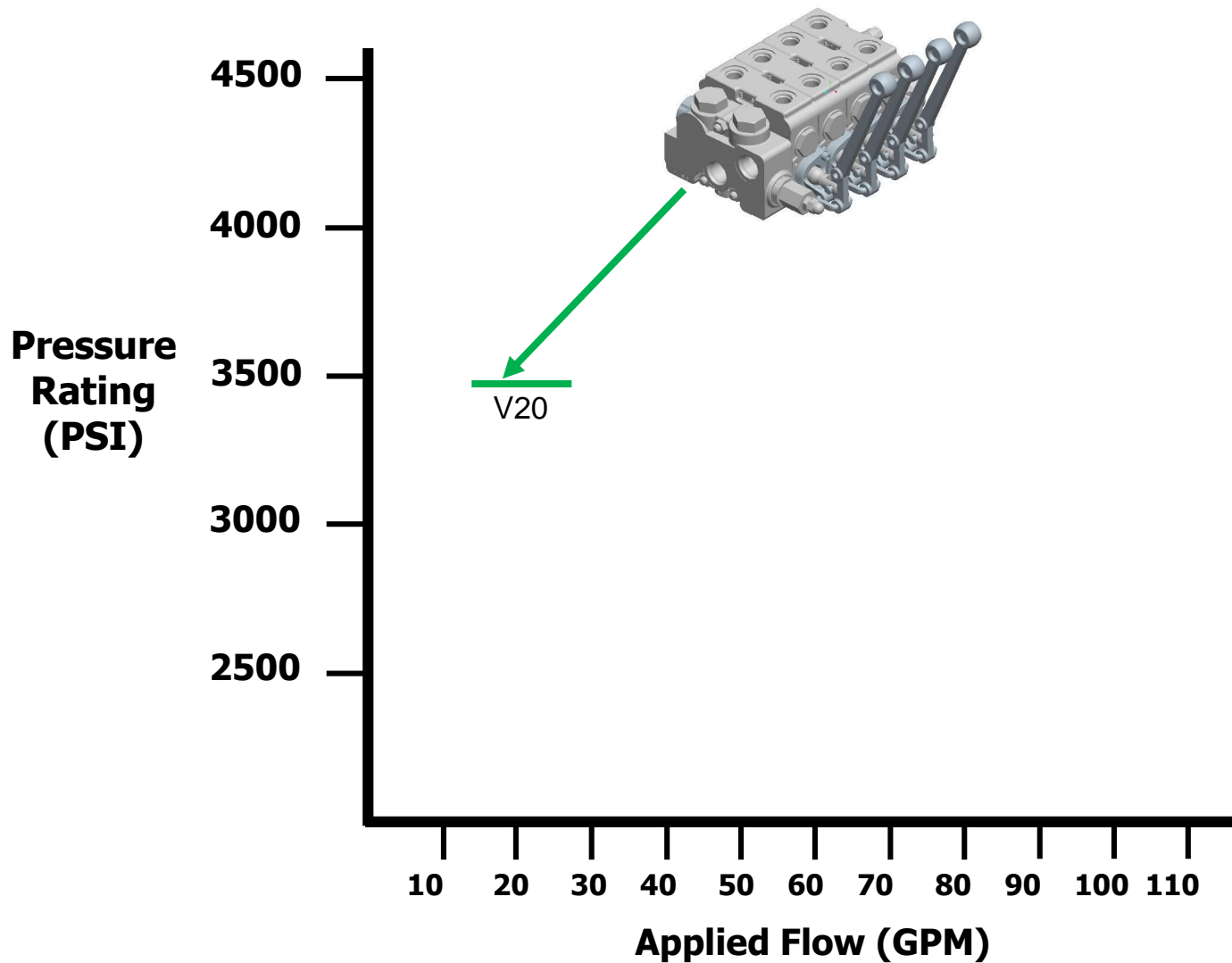
# Mobile Valve Training

## V20 Review

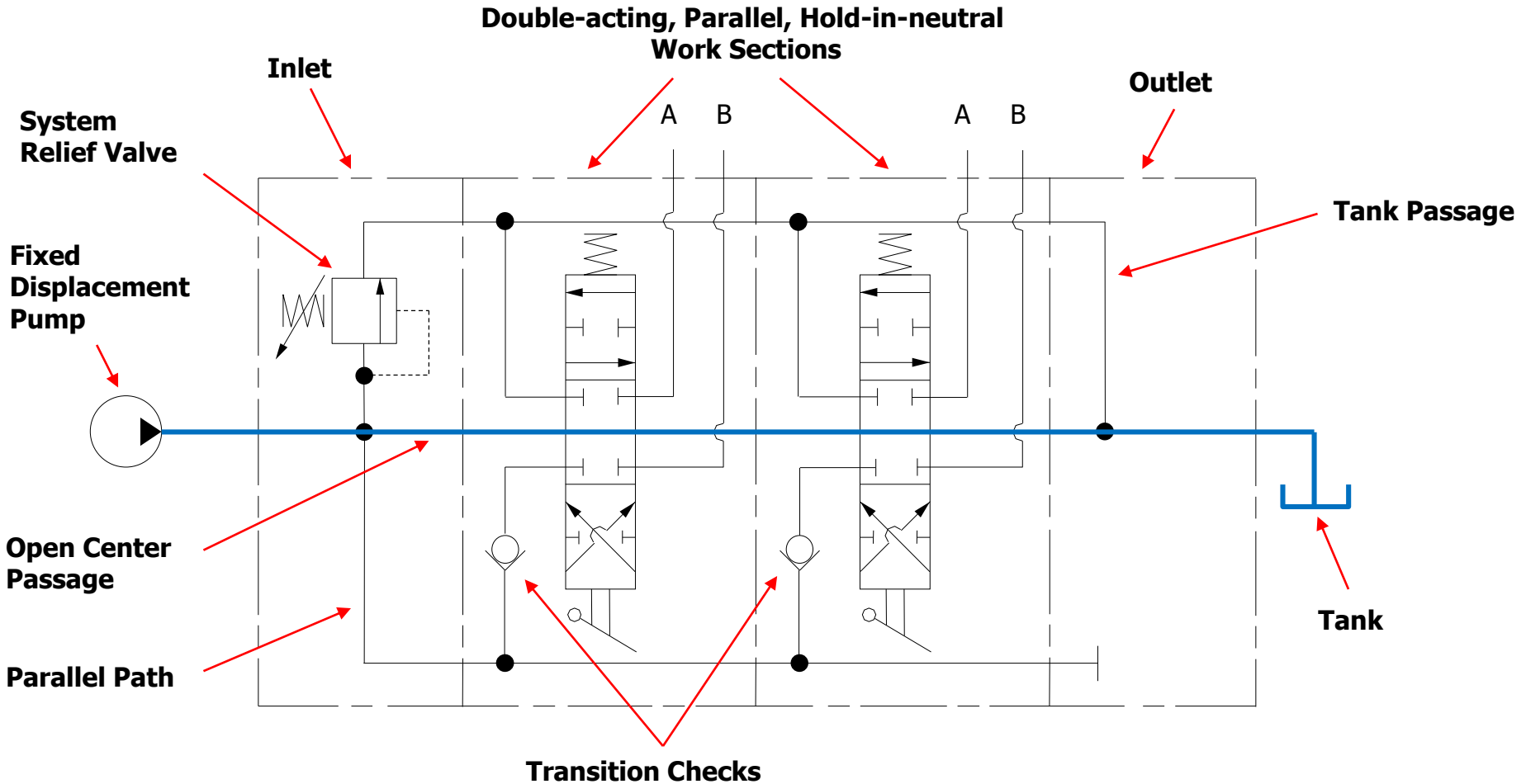


ENGINEERING YOUR SUCCESS.

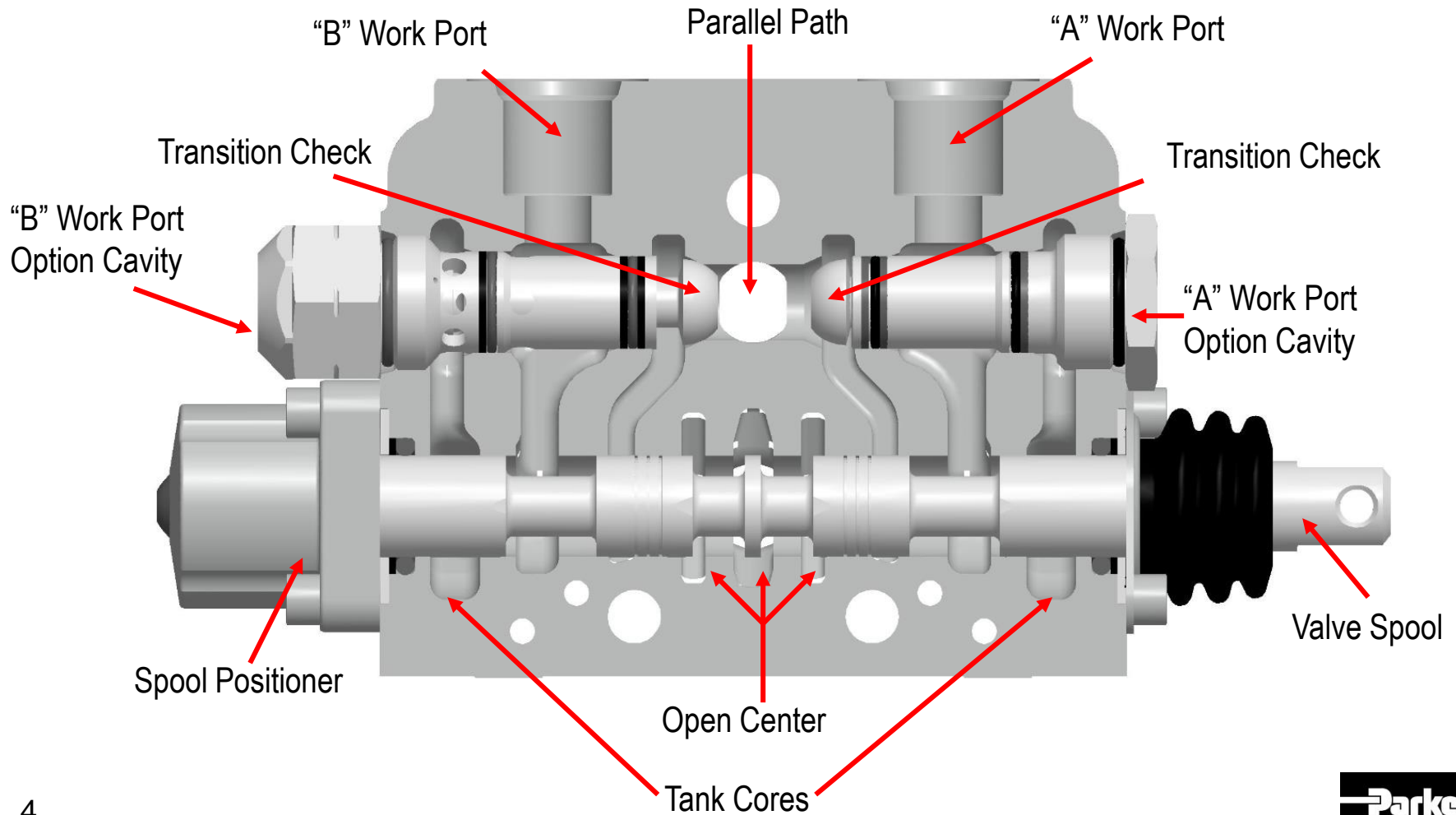
# Model V20



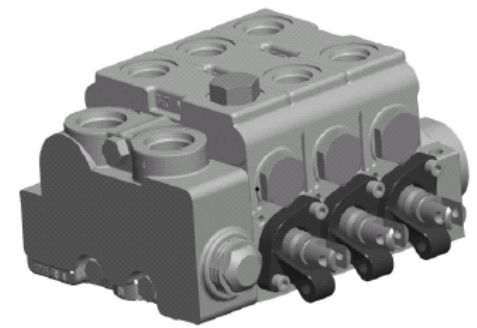
# Open Center Technology Example



# Parallel Work Section

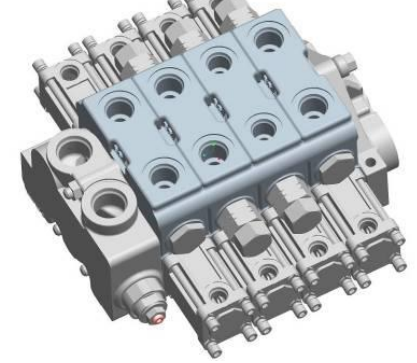


# V20 Specifications



- Nominal flow: 76 LPM (20 GPM)
- Typically applied between 15 and 25 GPM
- Pressures: 240 bar (3500 PSI) continuous
- Exhaust core: up to 34 bar (500 PSI) continuous with reinforced seal retainer & bracket.
- Max port leakage: 12 ml/min @ 76 bar (1000 PSI)
- Porting – SAE & BSP
  - Inlet, Outlet: SAE 10, 12
  - Work Ports: SAE 8, 10, 12 available.
- Footprint
  - Work section width 1.75”

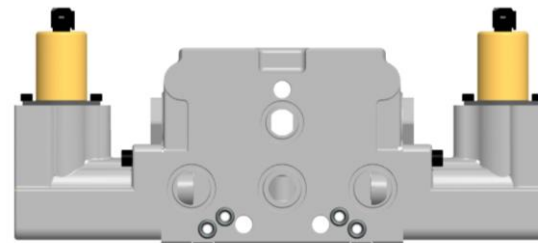
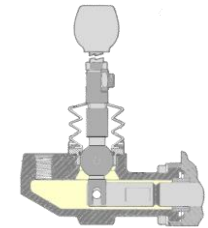
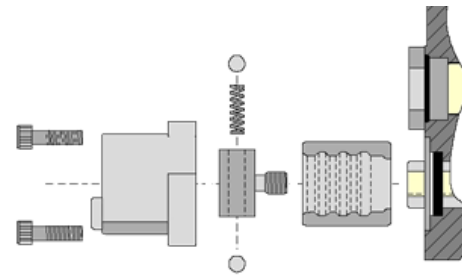
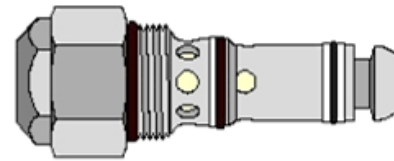
# V20 Design Benefits



Makes application decisions easy

V20 is highly configurable with:

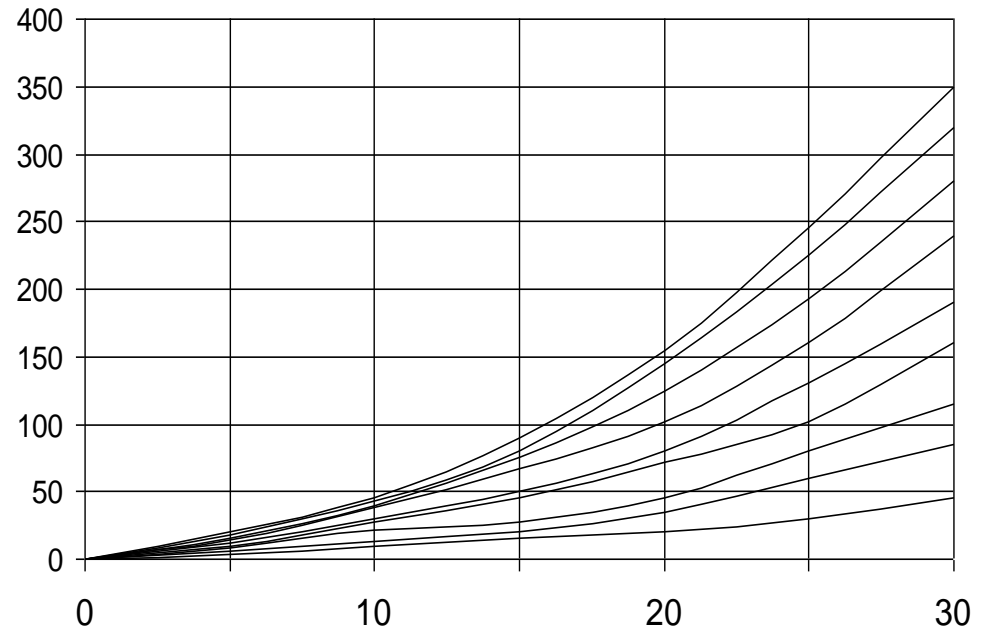
- Open Center
  - Power Beyond
  - Tandem
  - Series
- Closed Center
- Load Sense
- EH - Electrohydraulic
- Widest variety of
  - Manual spool positioners
  - Remote actuators
  - Work port options



# V20 Design Benefits

You can lift heavier loads and reduce heat generation for better fuel economy

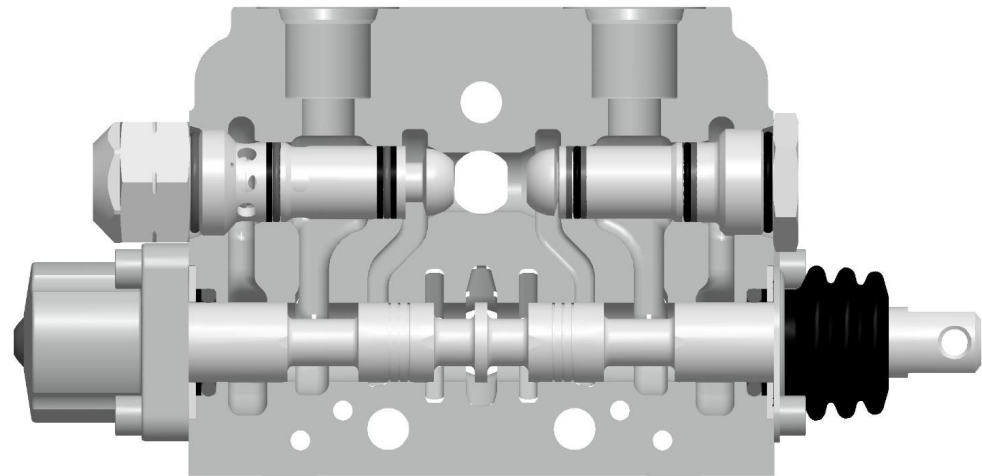
- V20 has exceptional size to pressure drop ratio
- Lowest pressure drop in the industry for its size



# V20 Design Benefits

Improve your machine productivity and reduce operator fatigue with outstanding multifunction and precise control

- .312" spool stroke (25% more than competitors)
- Y-Core Design vs. Z-core
- Custom spools available
- Fly cut lands available





# V20 Configuration Options

## Midsection Inlets

- Combined Flow
- Split Flow

- Vertical Handles
- Horizontal Handles

## Flexible Circuitry

- Parallel
- Tandem
- Series
- PO Checks
- Load Sensing

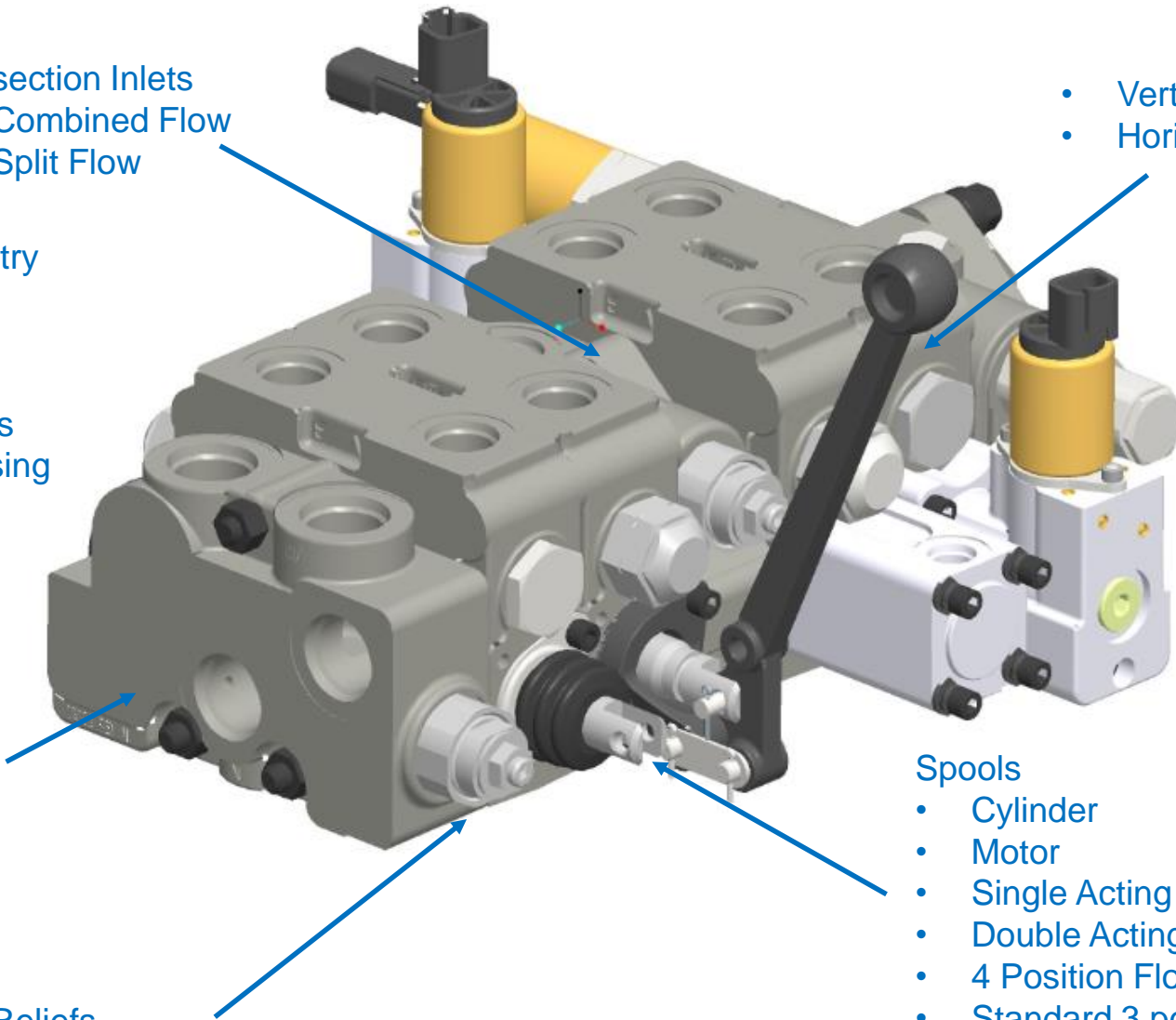
## Inlets

- Standard
- Combination Inlet /Outlet
- Priority Flow Control

## Spools

- Cylinder
- Motor
- Single Acting
- Double Acting
- 4 Position Float
- Standard 3 position symmetrical & reversible

- Main Reliefs
- Pilot & Differential area



# V20 Configuration Options

## Utility Section for Pilot generation (EH Assys)

- Pressure Buildup
  - Sol or Mech
- PRV
- Power Beyond
- Convertible

## Outlets

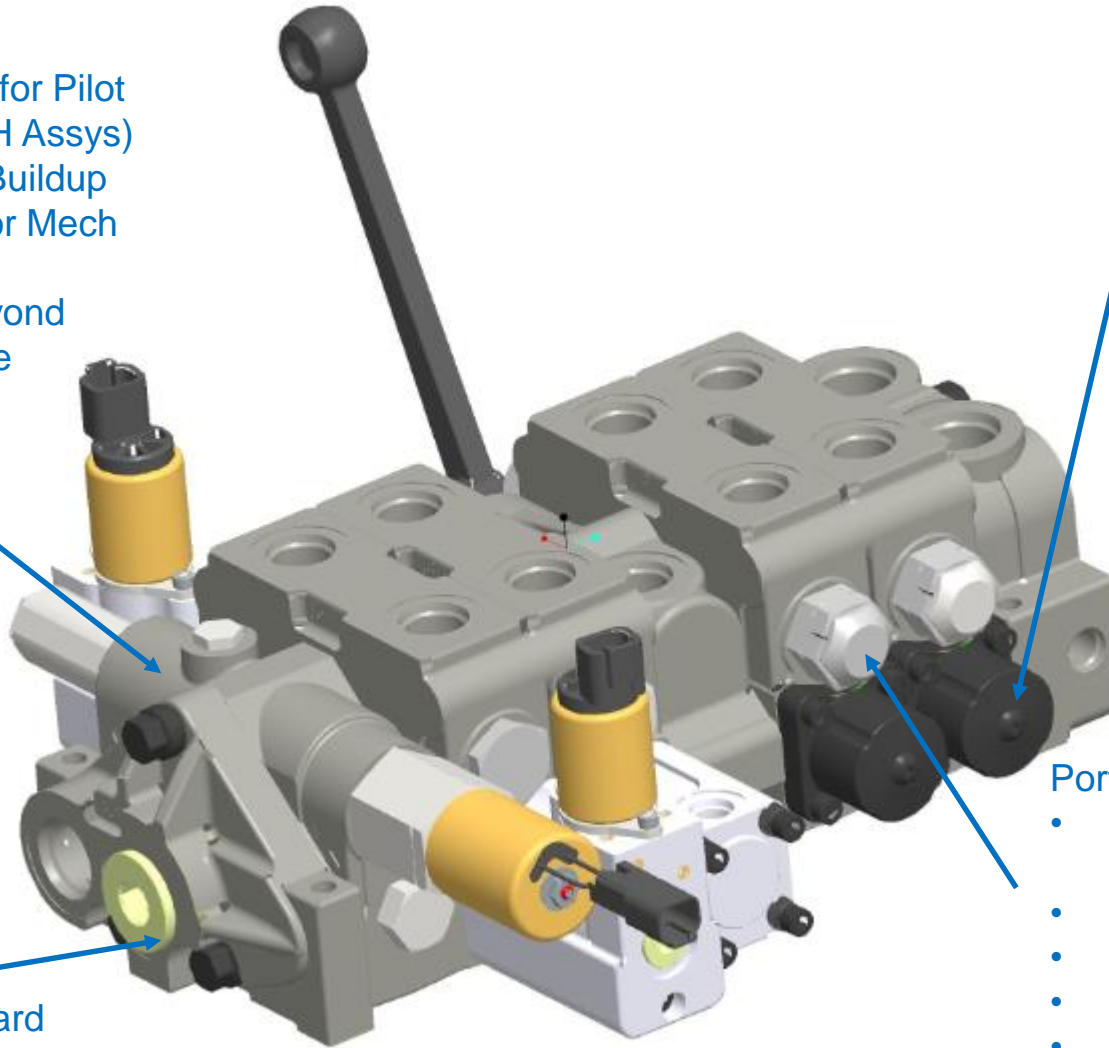
- Standard
- Power Beyond
- Convertible

## Operators

- Spring return
- 3 position detent
- Spring return out-detent in
- Detent out-spring return in
- 4 position float detent
- Pneumatic
- Hydraulic remote
- Hydraulic remote w/handle override
- Hydraulic pilot
- Hydraulic Kick-out
- Rotary actuator
- EH Control
- EH w/hdle override

## Port Accessories

- Differential Area Port Reliefs Screw and Shim Adjusted
- Pilot Operated Port Reliefs
- Anti-cavitation Checks
- Resistance Cartridges
- Work port Unloading Cartridges



# V20 Applications & Market Expertize

- Fork Lift
- Crawler Dozer
- Trenchers
- Boring Machines
- Chippers
- Backhoes
- Loaders
- Truck Market
  - Snow & ice
  - Mounted Crane
  - Bulk Feed
  - Dump
  - Refuse

