

PUMP Brief

Hydraulic Pump Division

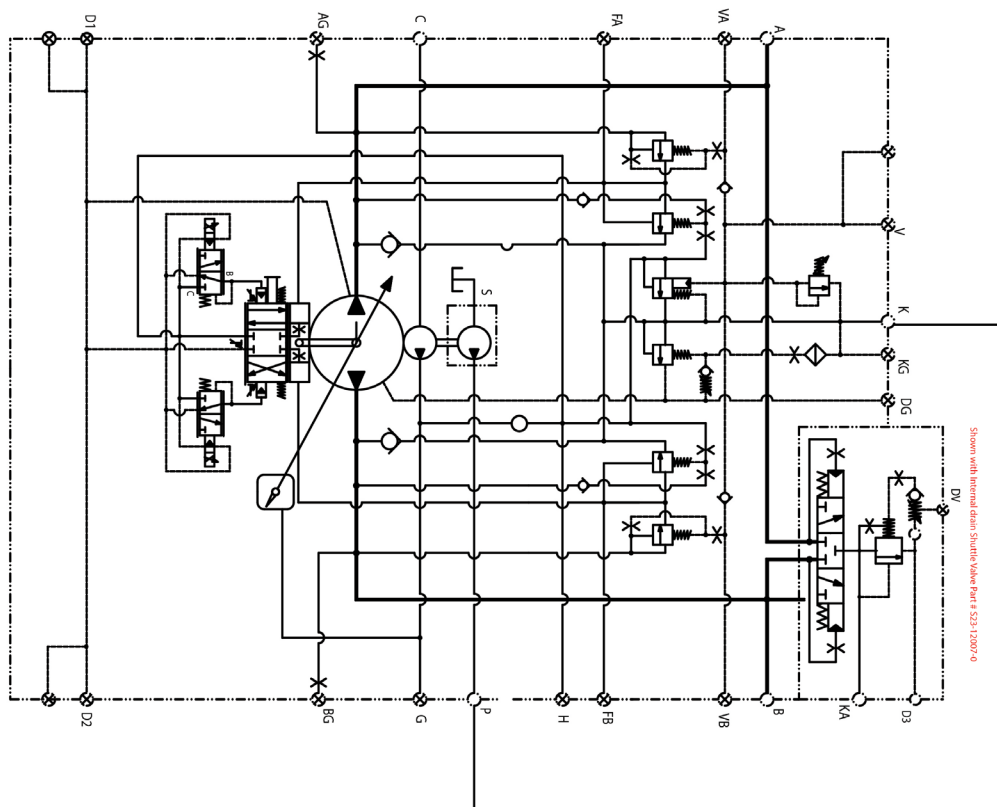
AS-0021

Gold Cup Solution Series: Part 7

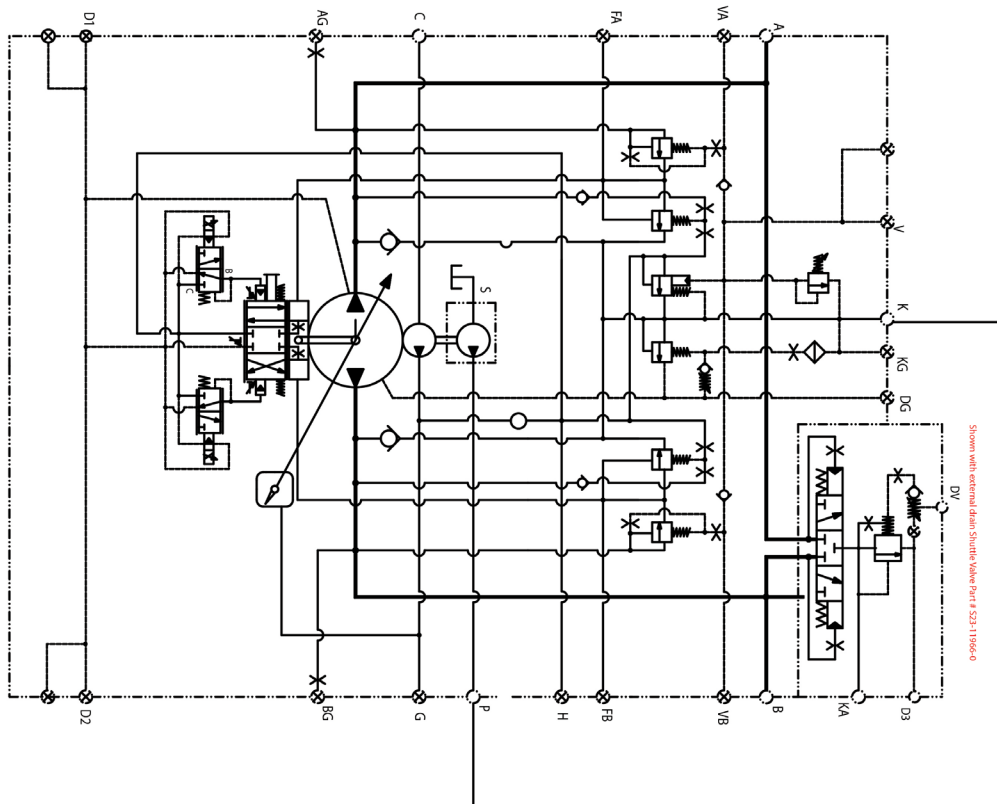
P6/7/8S

This two-page PDF provides port sizing information for Gold Cup Series Pump P6/7/8S on page 1, and the supporting circuit drawings on page 2.

| Ports | Port Sizing | Identification Key |
|----------|------------------|---|
| A | SAE 1.5 Code 62 | System Port |
| B | SAE 1.5 Code 62 | System Port |
| AG | SAE- 6 STR. THD | System "A" Gauge Connection |
| BG | SAE- 6 STR. THD | System "B" Gauge Connection |
| C | SAE- 20 STR. THD | Internal Auxiliary Pump Inlet |
| DG | SAE- 6 STR. THD | Case Gauge Connection |
| D1&D2 | SAE- 12 STR. THD | Case Drains |
| G | SAE- 8 STR. THD | Servo Outlet To External Filter Or Gauge Connection |
| H | SAE- 8 STR. THD | Servo Pressure Inlet From External Filter |
| K | SAE- 12 STR. THD | Auxiliary Replenish Inlet from External Filter |
| KG | SAE- 6 STR. THD | Replenish Gauge Connection |
| FA&FB | SAE- 6 STR. THD | Control Chamber Gauge Connection "A" & "B" Sides |
| V, VA&VB | SAE- 4 STR. THD | "V" Compensator Vent "A" & "B" Sides |
| | | "VA" Compensator Vent "A" Side |
| | | "VB" Compensator Vent "B" Side |
| KA | SAE- 12 STR. THD | Shuttle Relief Inlet |
| D3 | SAE- 16 STR. THD | Shuttle Drain |
| DV | SAE- 4 STR. THD | Shuttle External Pilot Valve Drain |



P6/7/85



P6/7/85

