

# PUMP Brief

Hydraulic Pump Division

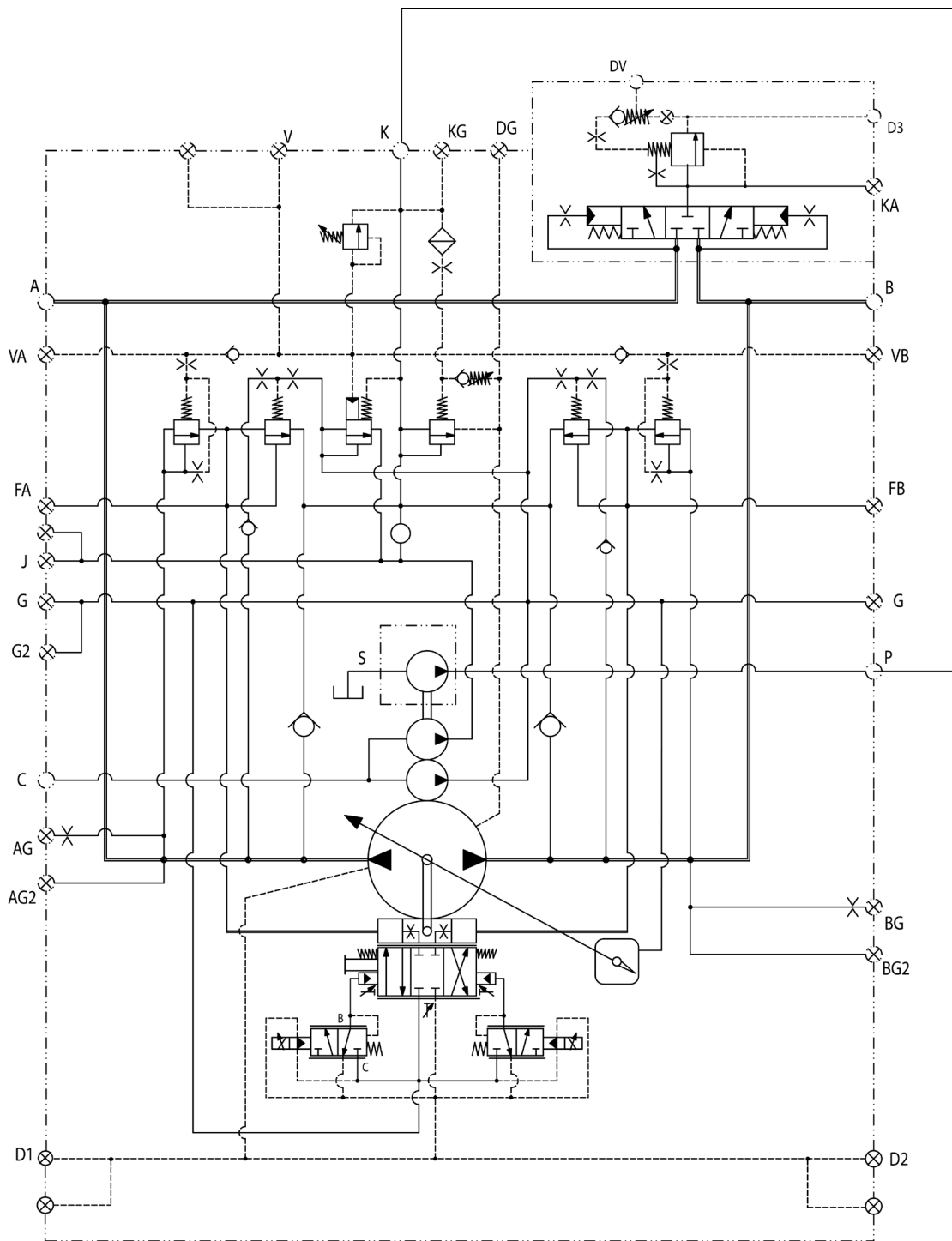
AS-0021

## Gold Cup Solution Series: Part 7

P11/14S

This two-page PDF provides port sizing information for Gold Cup Series Pump P11/14S on page 1, and the supporting circuit drawings on page 2.

Ports	Port Sizing	Identification Key
A	SAE 1.5 Code 62	System Port
B	SAE 1.5 Code 62	System Port
AG	SAE- 6 STR. THD	System "AG" Gauge Connection
BG	SAE- 6 STR. THD	System "BG" Gauge Connection
AG2&BG2	SAE- 4 STR. THD	System "AG2" & "BG2" Gauge Connections
C	SAE- 20 STR. THD	Internal Auxiliary Pump Inlet
DG	SAE- 6 STR. THD	Case Gauge Connection
D1&D2	SAE- 16 STR. THD	Case Drains
G	SAE- 4 STR. THD	Servo Outlet To External Filter Or Gauge Connection
K	SAE- 12 STR. THD	Auxiliary Replenish Inlet from External Filter
KG	SAE- 6 STR. THD	Replenish Gauge Connection
FA&FB	SAE- 6 STR. THD	Control Chamber Gauge Connection "A" & "B" Sides
V, VA&VB	SAE- 4 STR. THD	"V" Compensator Vent "A" & "B" Sides
		"VA" Compensator Vent "A" Side
		"VB" Compensator Vent "B" Side
KA	SAE- 12 STR. THD	Shuttle Relief Inlet
D3	SAE- 16 STR. THD	Shuttle Drain
DV	SAE- 4 STR. THD	Shuttle External Pilot Valve Drain
J	SAE- 8 STR. THD	Internal Auxiliary Pump Outlet To External Filter
G2	SAE- 8 STR. THD	Servo Pressure Gauge Connection



# P11/14S



Parker Hannifin Corporation  
Hydraulic Pump Division  
14249 Industrial Pkwy.  
Marysville, OH 43040  
phone 937 644 3915  
fax 937 642 3838  
[www.parker.com](http://www.parker.com)