

PUMP Brief

Hydraulic Pump Division

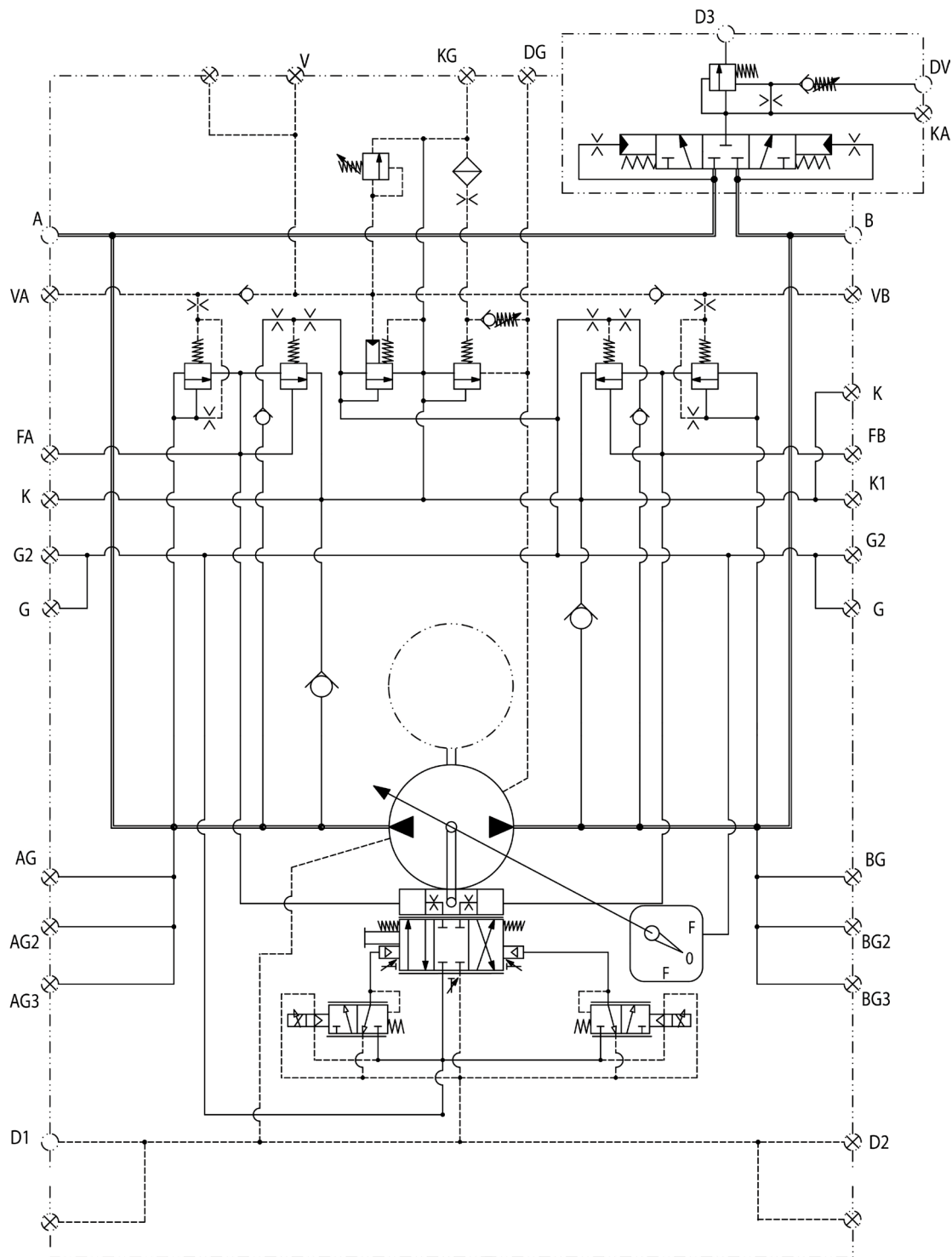
AS-0021

Gold Cup Solution Series: Part 7

P11/14L

This two-page PDF provides port sizing information for Gold Cup Series Pump P11/14L on page 1, and the supporting circuit drawings on page 2.

Ports	Port Sizing	Identification Key
A	SAE 1.5 Code 62	System Port
B	SAE 1.5 Code 62	System Port
AG&AG3	SAE- 6 STR. THD	System "AG" & "AG3" Gauge Connections
BG&BG3	SAE- 6 STR. THD	System "BG" & "BG3" Gauge Connections
AG2&BG2	SAE- 4 STR. THD	System "AG2" & "BG2" Gauge Connections
DG	SAE- 6 STR. THD	Case Gauge Connection
D1&D2	SAE- 16 STR. THD	Case Drains
G	SAE- 4 STR. THD	Servo Outlet To External Filter Or Gauge Connection
K&K1	SAE- 12 STR. THD	Auxiliary Replenish Inlet from External Filter
KG	SAE- 6 STR. THD	Replenish Gauge Connection
FA&FB	SAE- 6 STR. THD	Control Chamber Gauge Connection "A" & "B" Sides
V, VA&VB	SAE- 4 STR. THD	"V" Compensator Vent "A" & "B" Sides
		"VA" Compensator Vent "A" Side
		"VB" Compensator Vent "B" Side
KA	SAE- 12 STR. THD	Shuttle Relief Inlet
D3	SAE- 16 STR. THD	Shuttle Drain
DV	SAE- 4 STR. THD	Shuttle External Pilot Valve Drain
G2	SAE- 8 STR. THD	Servo Pressure Gauge Connection



P11/14L

