

altair® OHV vCell



Key Benefits

- Extended availability
- Maximum protection against fouling and corrosion
- Low pressure drop—even in wet & humid conditions
- Proven water management
- E10 efficiency @ 6800 m³/h (4000 CFM)

Extended availability

The **altair** OHV vCell provides best-in-class turbine protection against corrosives and moisture, with its unique combination of hydrophobic properties integrated with high efficiency. It has a filtration efficiency grade of E10 per EN1822:2009 and boasts 90% MPPS at high flow rate – significantly higher than the minimum requirement of 85% MPPS for E10 classification. The extended filtration surface area ensures low pressure loss and supports extended filter life. The **altair** OHV filter sets a new standard in corrosion protection. Its salt removal performance is significantly improved over the best products previously available from Parker Hannifin.

Enhanced gas turbine protection

The **altair** OHV vCell is made using fully potted pleated panels to provide a complete seal and is mounted within an ABS plastic frame. Protective grids incorporated on the downstream surface deliver robust performance, even in high under-pressure conditions that can be experienced in gas turbine applications.

Performance Data

ASHRAE 52.2: 2012 Rating	MERV 16
EN 1822: 2009 Rating @ 6800 m³/h (4000 CFM)	E10 (90.56% MPPS)
EN779 Dust-Holding Capacity @ 5830 m³/h (3430 CFM)	380 g (0.84 lb) to 450 Pa 760 g (1.67 lb) to 772 Pa
Operating Temperature Range	-40°C to 70°C (-40°F to 158°F)

Filter Facts

Construction	Robust, impact resistance plastic, ABS (Acrylonitrile butadiene styrene)
Gasket	Single piece, polyurethane
Dimensions (H x W x D)	595mm (23.4") x 595mm (23.4") x 435mm (17.1") 580mm (22.8") x 620mm (24.4") x 435mm (17.1")
Clean Weight	15 kg (33 lb)

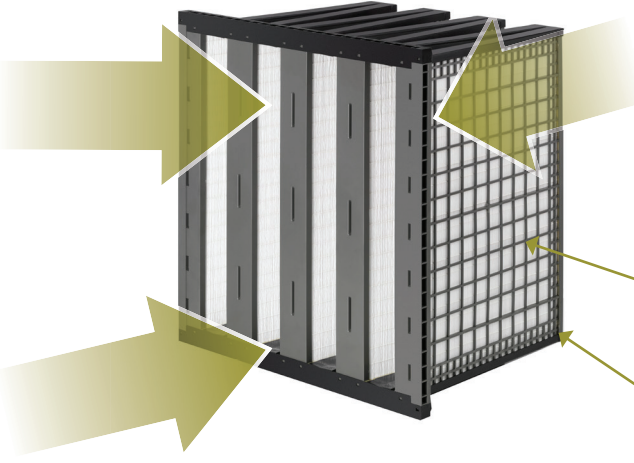
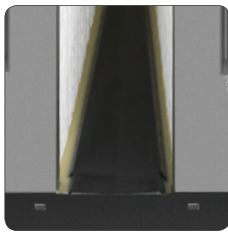
altair® OHV vCell

Key Features

Best in class hydrophobic properties



Fully potted and sealed

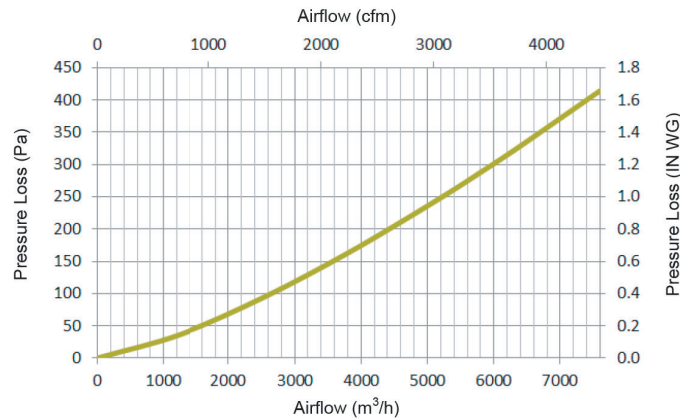


Continuous gasket with gasket stop

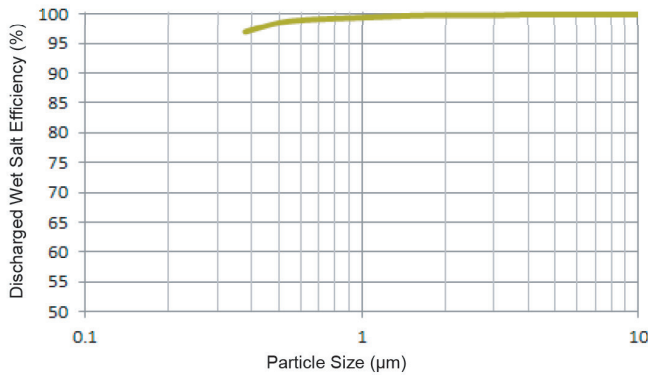
Protective grids, ensures wet burst pressure of greater than 25" WG

Robust ABS frame

Pressure Loss



Wet Salt Efficiency



Dry Salt Efficiency

