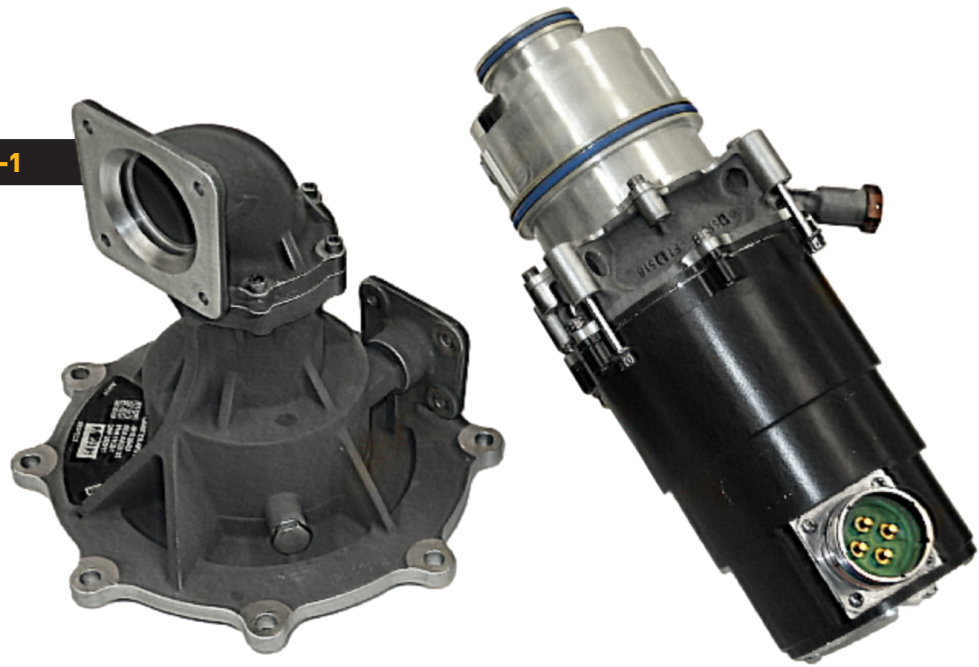


**Model 11C9-4/11C8-1**



### PARKER AEROSPACE

# APU pump canister and cartridge

## Product data matrix and performance index

Many civilian and military aircraft utilize 28 VDC power for fuel system products. The 11C9-4 / 11C8-1 pump utilizes a two piece (cartridge / canister) assembly that allows for the main pumping element (cartridge) to be removed and replaced during service without performing additional maintenance on the fuel tank, such as draining the fuel from the tank to gain access to the pump. The 11C9-4 / 11C8-1 is used as a separate pump solely to supply fuel to the aircraft APU. Extensive qualification testing has been completed, and the 11C9-4 / 11C8-1 pump assembly has shown excellent field reliability. The combination of certification testing and field experience provides a low risk, cost effective solution for fuel pump applications utilizing a 28 VDC power system.

### Product attributes and benefits

- Two piece assembly (cartridge/canister), mounted to the vertical spar of the aircraft fuel tank
- Single inlet utilizing a centrifugal impeller
- 28 volt brushless DC drive system (motor & controller)
- Voltage range is from 18 VDC to 32 VDC
- Motor is fuel cooled for long life

### Contact information

#### Bill Heilman

bill.heilman@parker.com  
(440) 284-6284

**Parker Hannifin Corporation**  
Parker Aerospace  
**Fluid Systems Division**  
711 Taylor Street  
Elyria OH 44035

# APU pump canister and cartridge

Product data matrix and performance index

## Model 11C9-4

Characteristic	Value	Pump performance
----------------	-------	------------------

Model number	11C9-4
Application	APU pump cartridge
<b>Pumping data</b>	
Hydraulic element	Single stage, centrifugal
Rated flow	1,000 pph
Minimum discharge pressure	16.2 psig
Typical discharge pressure	19.6 psig at SL at 18.5 VDC
Maximum operating altitude	41,500 ft
Qualified fuels	Jet A, JP-10
Temperature range	-36°F to +131°F
Duty cycle	Continuous

### Motor data

Motor type	Brushless DC
Voltage	18.5 - 32.5 VDC
Input power at rated flow	4.8 amps at SL at 18.5 VDC
Maximum input power	4.7 amps
Dry run capability	Yes
EMI filtering	Yes
Stator thermal protection	Yes
Electrical connection	EN3645Y0GR48MN

### Geometric assembly data

Assembly mounting	Spar, cartridge
Inlet port	See canister
Discharge port	See canister
Discharge check valve	No
Bypass flow valve	No
Lift capability	No
Approximate envelope (L x W x H)	11.3" x 6.5" x 8.7"
Weight (maximum)	5.5 lbs

## Model 11C8-1

Characteristic	Value
----------------	-------

Model number	11C8-1
Application	APU pump canister

### Geometric assembly data

Assembly mounting	Spar, canister
Inlet port	4 bolt flange, 1.882" diameter
Discharge port	4 bolt flange, 1.224" diameter
Discharge check valve	No
Bypass flow valve	No
Lift capability	See cartridge
Approximate envelope (L x W x H)	8.2" x 8.2" x 8.7"
Weight (maximum)	3.1lbs

Typical model 11C8-1/11C9-4 pump performance at 18.5 VDC for room temperature Jet A at seal level

