



Installation and Maintenance Instructions

Refrigeration Solenoid Valve Normally Closed Pilot Operated Diaphragm

GRB2XX, GRB3XX, GRB6XX, GRS2XX, GRS3XX, GRS6XX

Bulletin 7285
Revision B

Effective 16Dec94
12-2024

Parker Hannifin Corporation
Fluid Control Division

Warnings

1. Check the adhesive data label for the correct catalog number, pressure, voltage and frequency. Do not install the valve if unsuitable.
2. If the solenoid is disassembled, during reassembly it is mandatory that all parts be properly installed. They are an important part for the magnetic circuit.
3. The body must be wrapped in wet cloth or protected with chills during brazing or remove the bonnet assembly and diaphragm before brazing the line connections.
4. Turn off the electrical power supply and line pressure to the valve. Bleed the trapped pressure from the lines before inspecting, cleaning, servicing, or repairing the valve.

Description:

The GRB2XX, GRB3XX, GRB6XX, GRS2XX, GR3XX, and GRS6XX series solenoid valves are a two-way, pilot-operated, pivoted edge, diaphragm valves.

Operation: **NORMALLY CLOSED CONTINUOUS DUTY**

(Closed when de-energized; open when energized.)

Installation:

1. Application

| | |
|---|----------------------|
| Maximum Operating Pressure Differential | 300 PSIG |
| Minimum Operating Pressure Differential | <1 PSIG |
| Safe Working Pressure | 500 PSIG |
| Service Refrigerants | Contact Manufacturer |
| Ambient Operating Temperature Range | -20°F to 120°F |
| Fluid Operating Temperature Range | -20°F to 240°F |

Table 1a Operational Characteristics
(GRB2XX, GRB3XX, GRB6XX)

| | |
|---|----------------------|
| Maximum Operating Pressure Differential | 300 PSIG |
| Minimum Operating Pressure Differential | <1 PSIG |
| Safe Working Pressure | 500 PSIG |
| Service Refrigerants | Contact Manufacturer |
| Ambient Operating Temperature Range | Contact Manufacturer |
| Fluid Operating Temperature Range | -20°F to 240°F |

Table 1a Operational Characteristics
(GRS2XX, GRS3XX, GRS6XX)

2. Positioning

Valves may be mounted in any position except where the coil assembly is lower than the valve body assembly. Valves must be mounted vertical and upright to prevent the accumulation of debris in the plunger enclosure tube. Figure 1 shows the recommended positioning.

3. Piping

Braze the connecting pipes to the valve according to the markings on the valve body (see flow arrow on body). Warning #3 listed above must be heeded before brazing.

4. Wiring

Wiring must comply with local and national electrical codes. All electrical connections should be secure. Do not use conductors smaller than No. 18 B&S gauge. The electrical data for the valve will be found on the coil label. Make sure the voltage and frequency are correct.

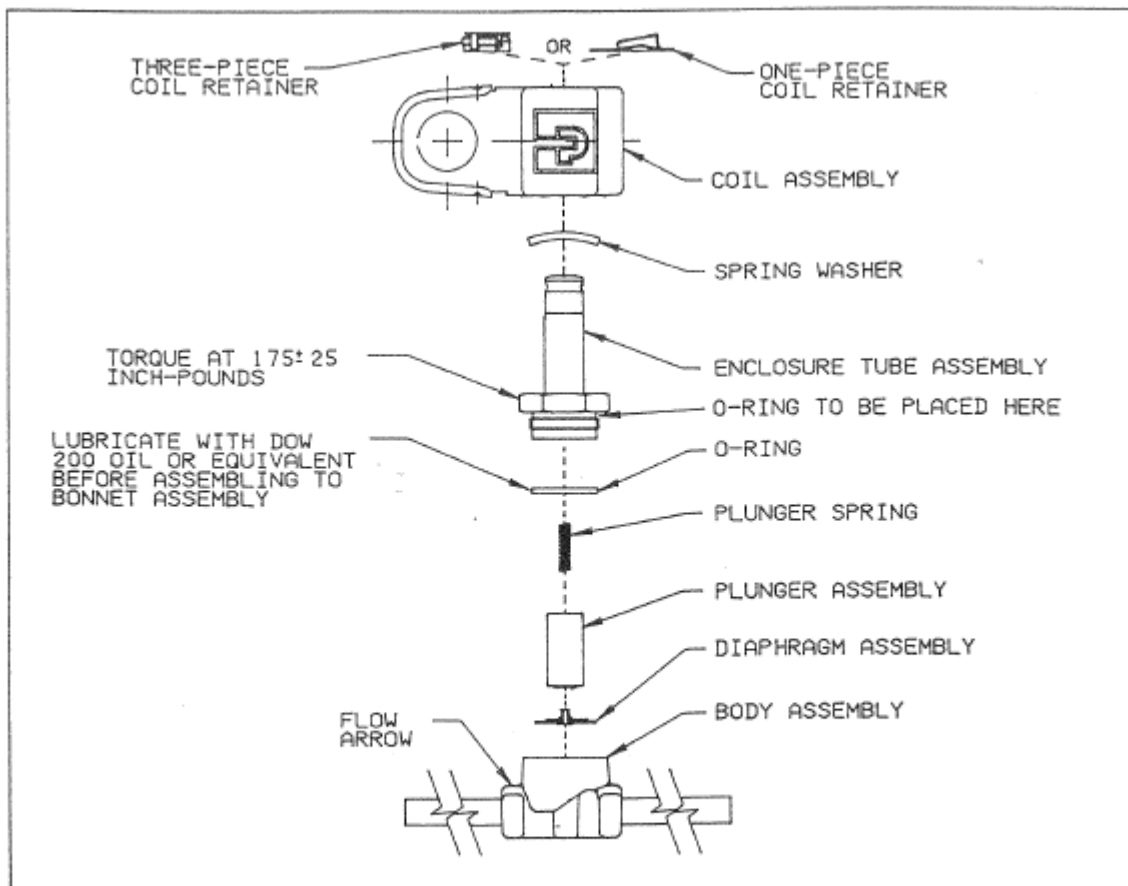


FIGURE 3
EXPLODED VIEW