

## Site Safety

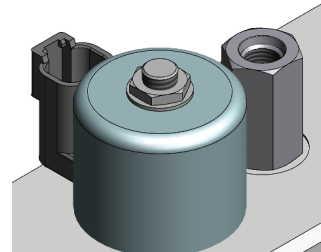
Disconnect electrical connections and follow control of hazardous energy procedure (lockout/tag out) for your workplace. **WARNING!** If appropriate control of hazardous energy procedures are not followed, the coil may become energized during this procedure, resulting in electric shock.



## Parker FM80 Maintenance Series

Parker Solenoid Valve Coil Replacement Kit

### Product Overview



To find Product and Safety Information  
go to [www.parker.com/veriflomanuals](http://www.parker.com/veriflomanuals)  
or call 1-800-CPARKER

**User Responsibility Statement:** This document provides product or system options for further investigation by users having technical expertise. Before you select or use any product or system, it is your responsibility to analyze all aspects of your application and review the information concerning the product in the current product catalog. The user, through its own analysis and testing, is solely responsible for making the final selection of the system and components and assuring that all performance, safety, and warning requirements of the application are met.

FRONT

### Solenoid Valve Coil Removal

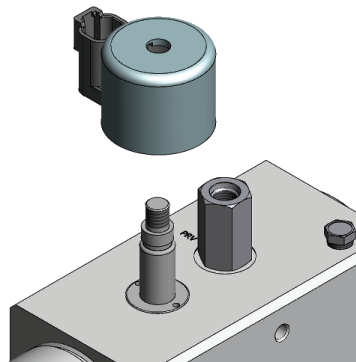
1. Follow Lockout/Tag out procedures.  
Disconnect the electrical connections and follow control of hazardous energy procedure (lockout/tag out) for your workplace. **WARNING!** If appropriate control of hazardous energy procedures are not followed, the coil may become energized during this procedure, resulting in electric shock.
2. Remove the 9/16" hex nut and washer.
3. Remove coil.

### New Solenoid Valve Coil Installation

4. Replace Coil.  
**CAUTION!** Coils are available for both 12V and 24V operation. The coil operating voltage can be found on the coil label.
5. Install the washer and the hex nut.
6. Torque the hex nut to  $120 \pm 10$  in-lbs.

### Tools Required

- 12V OR 24V Solenoid Valve Coil
- Nut
- Washer
- 9/16" open-end wrench or socket wrench



BACK