

# MPP270E

## PMAC Traction Motor

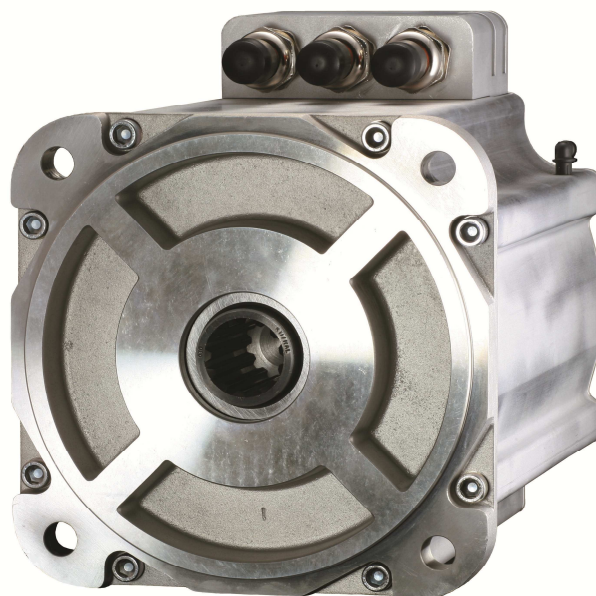


## Description

The MPP270E PMAC Traction motor is a high performance and high torque electric machine.

Speed and torque points can be optimized for your voltage requirements.

Parker's unique dual cooling configuration features patent-pending internal cooling technology that increases power significantly.



## Contact Information

Parker Hannifin Corporation  
EMN Division  
5500 Business Park Drive  
Rohnert Park, CA 94928

**Tel: +1 (707) 584-7558**

<http://hev.parker.com>



## Product Features

- Patent-pending internal cooling
  - Increases cont. power by 70% over external only
- Male or female spline shaft
- 55,000 hours of life
- 95% efficiency
- Highest continuous power density available
- Windings optimized for any voltage up to 750VDC

**ENGINEERING YOUR SUCCESS.**

# Specifications

## Performance Ratings

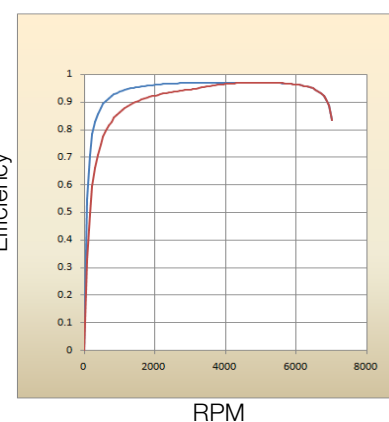
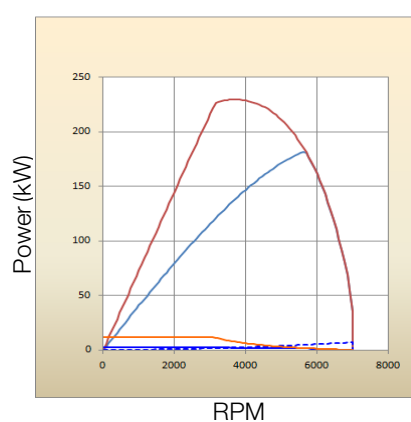
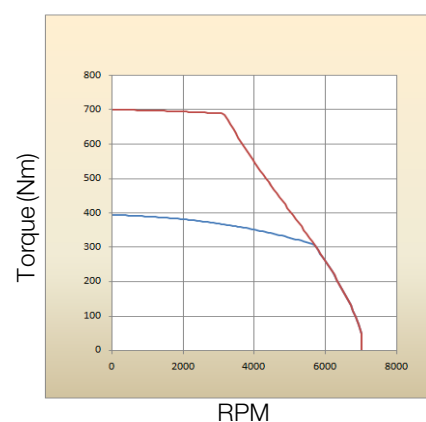
Description	Units	MPP270E
Stall Torque Continuous	Nm	394
Max Speed	rpm	7000
Peak Torque	Nm	700
Peak Output Power	kW	230
Rated Speed	rpm	5615
Rated Shaft Output Power	kW	182
Max DC bus Voltage	VDCmax	750
Ambient Temp at Rating	°C	50
Max Winding Temp	°C	155
Motor Weight	kg	150

## Dimensions

	Units	MPP270E
Cross Section	mm	270
Stator Length	mm	550
Shaft Diameter	mm	48

## Cooling

	Units	50/50 Water Glycol	Oil
Cooling Type	-	Dual Cooling	Dual Cooling
Flow Rate	l/min	8l/min	8l/min
Pressure Drop	kPa	6.9 kPa	69kPa
Inlet Temp	C	50-70	<70



Performance using Parker Frame 5 Traction Inverter @ 650VDC with cooling at 50C. 350VDC and other voltages available. Specifications may vary.

## How to order?

Contact Parker to order the MPP270E traction motor. Our engineering team can send you detailed performance specifications and data tailored to your speed-torque requirements prior to order placement

## Typical Applications

- Heavy Duty Traction Motor
- Output Generator for Range Extenders
- Heavy Duty Electro-hydraulic Actuation



Parker Hannifin Corporation  
 Electromechanical Division – North America  
 5500 Business Park Drive  
 Rohnert Park, CA 94928 USA  
 Tel: +1 (707) 584 7558

<http://hev.parker.com>