

# MPP2706

## PMAC Traction Motor

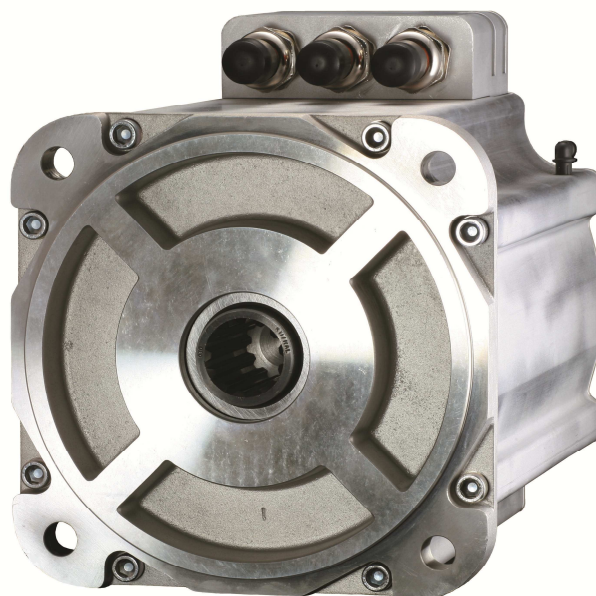


## Description

The MPP2706 PMAC Traction motor is a high performance and high torque electric machine.

Speed and torque points can be optimized for your voltage requirements.

Parker's unique dual cooling configuration features patent-pending internal cooling technology that increases power significantly.



## Contact Information

Parker Hannifin Corporation  
EMN Division  
5500 Business Park Drive  
Rohnert Park, CA 94928

**Tel: +1 (707) 584-7558**

<http://hev.parker.com>



## Product Features

- Patent-pending internal cooling
  - Increases cont. power by 70% over external only
- Male or female spline shaft
- 55,000 hours of life
- 95% efficiency
- Highest continuous power density available
- Windings optimized for any voltage up to 750VDC

**ENGINEERING YOUR SUCCESS.**

# Specifications

## Performance Ratings

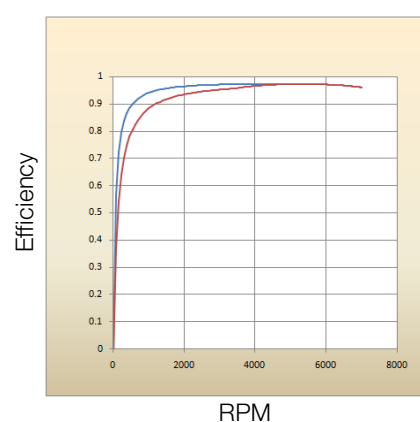
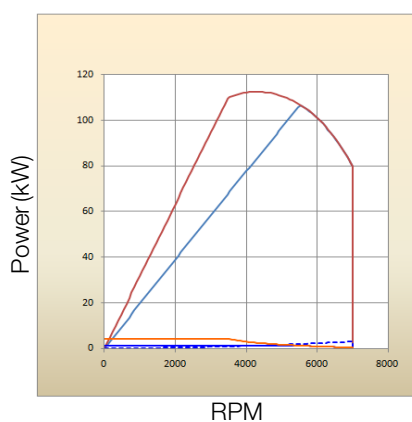
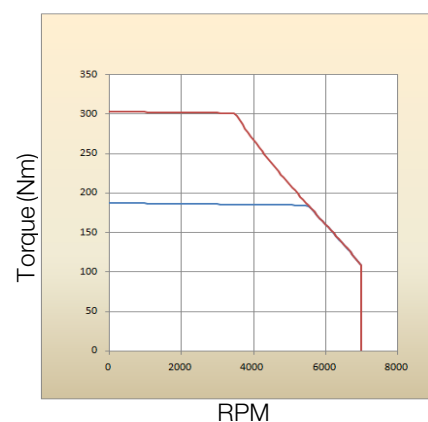
Description	Units	MPP2706
Stall Torque Continuous	Nm	188
Max Speed	rpm	7000
Peak Torque	Nm	303
Peak Output Power	kW	112
Rated Speed	rpm	5538
Rated Shaft Output Power	kW	107
Max DC bus Voltage	VDCmax	750
Ambient Temp at Rating	°C	50
Max Winding Temp	°C	155
Motor Weight	kg	76

## Dimensions

	Units	MPP2706
Cross Section	mm	270
Stator Length	mm	350
Shaft Diameter	mm	48

## Cooling

	Units	50/50 Water Glycol	Oil
Cooling Type	-	Dual Cooling	Dual Cooling
Flow Rate	l/min	8l/min	8l/min
Pressure Drop	kPa	6.9 kPa	69kPa
Inlet Temp	C	50-70	<70



Performance using Parker Frame 3 Traction Inverter @ 650VDC with cooling at 50C. 350VDC and other voltages available. Specifications may vary.

## How to order?

Contact Parker to order the MPP2706 traction motor. Our engineering team can send you detailed performance specifications and data tailored to your speed-torque requirements prior to order placement

## Typical Applications

- Light Duty Traction Motor
- Output Generator for Range Extenders
- Medium Duty Electro-hydraulic Actuation



Parker Hannifin Corporation  
 Electromechanical Division – North America  
 5500 Business Park Drive  
 Rohnert Park, CA 94928 USA  
 Tel: +1 (707) 584 7558

<http://hev.parker.com>