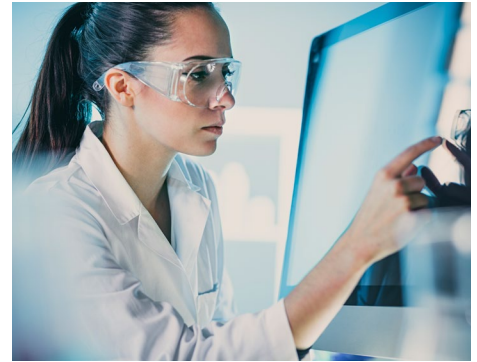


WIN-SHIELD™ Micromesh

High Transparency EMI Shielding
Micromesh



[Parker Chomerics WIN-SHIELD Micromesh](#)

is the next generation of EMI Shielding Mesh for superior EMI protection of LCD display assemblies in many applications in military, medical, aerospace, and industrial markets. By using photolithography methods from the semiconductor industry, tight control of conductive mesh lines are patterned onto a PET substrate that provide superior light transmission compared to other EMI shielding products and high levels of light transmission.

WIN-SHIELD Micromesh is the ideal option for display applications up to 42" that need exceptional clarity and crisp images while meeting high levels of EMI shielding >30 dB. Micromesh can be incorporated into a wide variety of products from WIN-SHIELD™ P polycarbonate windows and WIN-SHIELD G Glass windows to CHO-TOUCH™ EMI Touchscreens that are fully assembled for easy installation into chassis and frames.

Precise control of grid patterns in WIN-SHIELD Micromesh reduces moiré effects to near zero to attain excellent image quality and high brightness. 85 OPI mesh spacing prevents unwanted moiré and matches most high resolution LCD displays. Parker Chomerics integrates Micromesh into its CHO- TOUCH EMI LCD line of turnkey EMI Shielded LCD display assemblies.

Contact Information

Parker Hannifin Corporation
Chomerics Division
77 Dragon Court
Woburn, MA 01801

phone 781 935 4850
fax 781 933 4318
chomailbox@parker.com

parker.com/chomerics



Product Features

- EMI Shielding for LCD displays
- Incorporated into WIN-SHIELD P, WIN-SHIELD G, and CHO-TOUCH Touchscreens
- Highest light transmission possible for EMI Shielding
- Photolithographically defined lines
- Invisible EMI Shielding
- 87% open area
- Largest size is for 42" LCD displays

Typical Applications

- Patient monitoring medical applications
- Man portable military handhelds
- In cabin controls in aircraft
- Industrial controls
- Medical diagnostic devices
- Critical care applications
- Military displays



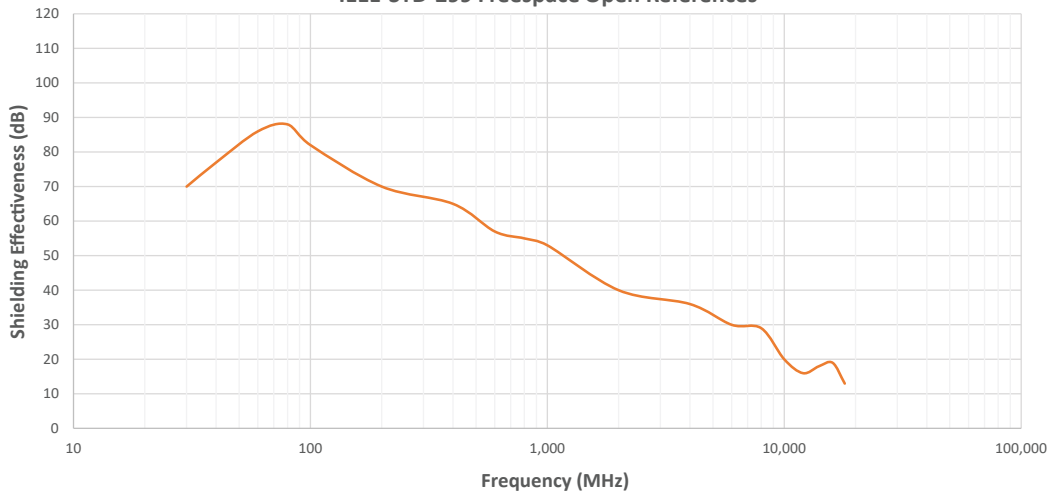
ENGINEERING YOUR SUCCESS.

WIN-SHIELD™ Micromesh Product Information

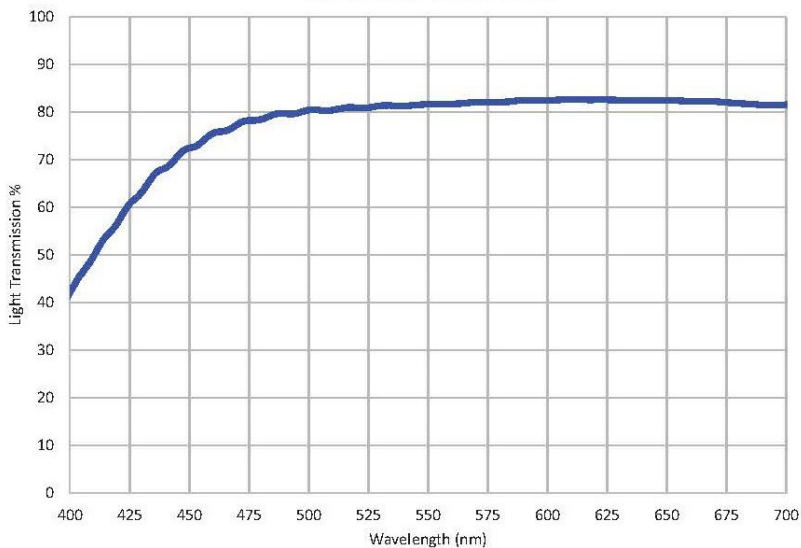
Micromesh Specifications

Openings Per Inch	85
Open Area	87%
Maximum Display Size	42" Wide Screen Display
Surface Conductivity	< 0.3 ohm/sq
Typical Operating Temperature Range	-40 to +70°C (-40 to +160°F)
Storage	1 year at 25°C (80°F), 50% relative humidity
Mesh Angle	45°

Shielding Effectiveness
IEEE-STD-299 Freespace Open References



Transmission of Micromesh



Availability

WINSHIELD Micromesh is available as an option in the following products:

- CHO-TOUCH EMI Touchscreens
- CHO-TOUCH EMI LCD Displays
- WIN-SHIELD P Plastic Windows
- WIN-SHIELD G Glass Windows

Request a Quote

[Get a quote here](#)

Where to Buy

[Find a sales rep or distributor near you](#)

parker.com/chomerics

© 2023 Parker Hannifin Corporation. All rights reserved.

CHODS1032 February 2024