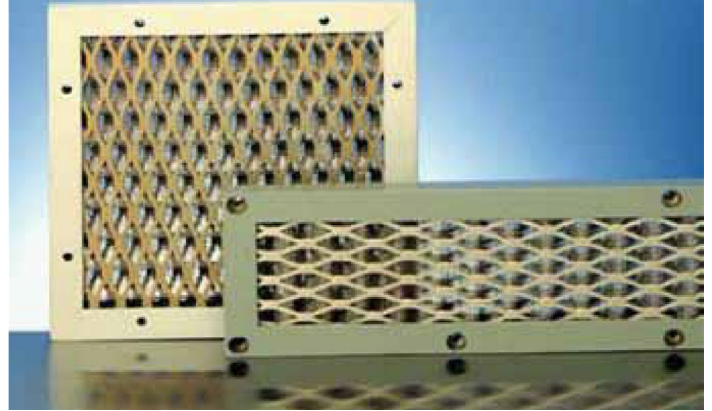


SHIELDSCREEN® AIR FILTERS

EMI Shielded Air Filters

Ready-to-install SHIELDSCREEN filters incorporate highly effective, integral EMI frame gasketing of monel with an optional neoprene sponge weather seal. Filtering is provided by several layers of woven wire mesh behind a retaining grille. The mesh layers are nested in "hills and valleys" of decreasing height to separate layers and increase dust holding capacity (see Figures 1 and 2). The mesh filter may be used dry, or wet with viscous oil coating, which improves adhesion of dust particles to the filtering material.

SHIELDSCREEN frames are of the same EMI gasketed, extruded aluminum construction as SHIELD CELL aluminum honeycomb panels. Because they are complete assemblies, removal for periodic cleaning is simple. Dry filters are cleaned by vacuuming from the intake side (which can be accomplished in place), or in detergent solution. Oil impregnated filters require removal and cleaning in detergent solution. Re-oiling is required after cleaning with detergent. The standard, inexpensive SHIELDSCREEN design 61-118 (Figure 1) requires the least space and includes installed fasteners. Typical alternative styles are shown in Figure 2, but more than a dozen others are available.



SHIELDSCREEN® PRODUCT INFORMATION

Ordering Procedure

Refer to the table below for SHIELDSCREEN shielded air filter part numbers and dimensions. Parker Chomerics also fabricates custom SHIELDSCREEN filters to meet specific dimensions. Part numbers will be assigned by Parker Chomerics. A detailed drawing should be provided to Parker Chomerics.

For technical assistance or support, contact the Parker Chomerics Applications Engineering team at Parker.com/ChoContact, 781 935 4850 or chomailbox@parker.com.

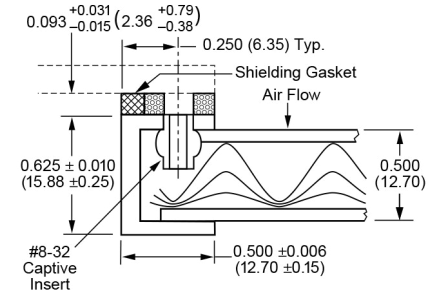


Figure 1 Standard Frame Design 61-118

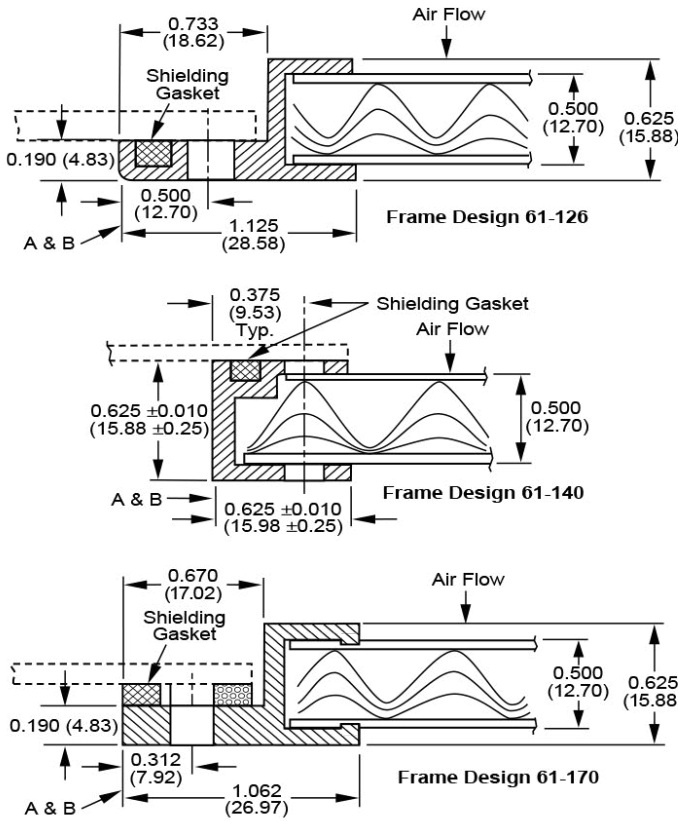


Figure 2 Alternative Frame Designs
(others available, please inquire)

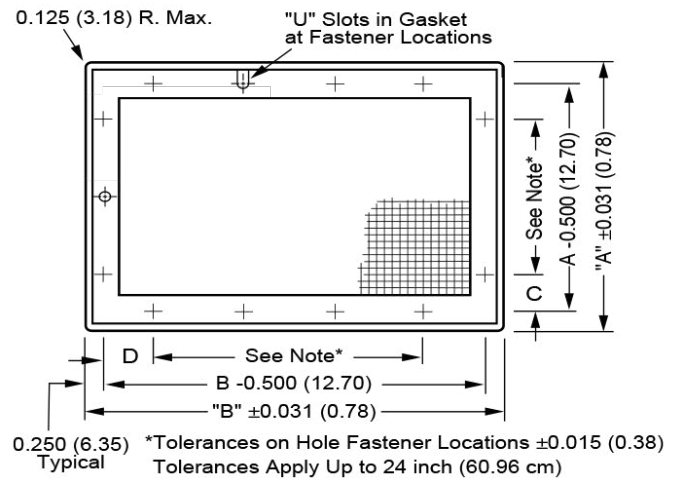


Figure 3

(mm dimensions in parentheses)

SHIELDSCREEN® PRODUCT INFORMATION

Common Honeycomb Vent Products

SHIELDSCREEN	Footprint, inch (mm)		Side A Dimensions, inch (mm)			Side B Dimensions, inch (mm)			Effective Area in ² (cm ²)
	A	B	C	# of Fasteners	Spacing	D	# of Fasteners	Spacing	
06-1302-0896	4 (101.6)	4 (101.6)	1.750 (44.45)	1	-	1.750 (44.45)	1	-	9 (58)
06-1302-0897	4 (101.6)	6 (152.4)	1.750 (44.45)	1	-	1.000 (25.40)	2	3.500 (88.90)	15 (97)
06-1302-0898	4 (101.6)	8 (203.2)	1.750 (44.45)	1	-	0.750 (19.05)	3	3.000 (76.20)	21 (135)
06-1302-0899	4 (101.6)	12 (304.8)	1.750 (44.45)	1	-	1.250 (31.75)	4	3.000 (76.20)	33 (213)
06-1302-0900	5 (127.0)	5 (127.0)	2.250 (57.15)	1	-	0.750 (19.05)	2	3.000 (76.20)	16 (103)
06-1302-0901	5 (127.0)	7 (177.8)	2.250 (57.15)	1	-	1.500 (38.10)	2	3.500 (88.90)	24 (155)
06-1302-0902	5 (127.0)	10 (254.0)	2.250 (57.15)	1	-	1.250 (31.75)	3	3.500 (88.90)	36 (232)
06-1302-0903	6 (152.4)	6 (152.4)	1.000 (25.40)	2	3.500 (88.90)	1.000 (25.40)	2	3.500 (88.90)	25 (161)
06-1302-0904	6 (152.4)	8 (203.2)	1.250 (31.75)	2	3.000 (76.20)	0.750 (19.05)	3	3.000 (76.20)	35 (226)
06-1302-0905	6 (152.4)	12 (304.8)	1.000 (25.40)	2	3.500 (88.90)	1.250 (31.75)	4	3.000 (76.20)	55 (355)
06-1302-0906	6 (152.4)	18 (457.2)	1.000 (25.40)	2	3.500 (88.90)	1.250 (31.75)	5	3.750 (95.25)	85 (548)
06-1302-0907	7 (177.8)	7 (177.8)	1.500 (38.10)	2	3.500 (88.90)	1.500 (38.10)	2	3.500 (88.90)	36 (232)
06-1302-0908	7 (177.8)	10 (254.0)	1.500 (38.10)	2	3.500 (88.90)	1.250 (31.75)	3	3.500 (88.90)	54 (348)
06-1302-0909	7 (177.8)	14 (355.6)	1.500 (38.10)	2	3.500 (88.90)	1.500 (38.10)	4	3.500 (88.90)	78 (503)
06-1302-0910	8 (203.2)	8 (203.2)	2.000 (50.80)	2	3.500 (88.90)	0.750 (19.05)	3	3.000 (76.20)	49 (316)
06-1302-0911	8 (203.2)	12 (304.8)	0.750 (19.05)	3	3.000 (76.20)	1.250 (31.75)	4	3.000 (76.20)	77 (497)
06-1302-0912	8 (203.2)	16 (406.4)	0.750 (19.05)	3	3.000 (76.20)	1.250 (31.75)	5	3.250 (82.55)	105 (677)
06-1302-0913	10 (254.0)	10 (254.0)	1.250 (31.75)	3	3.500 (88.90)	1.250 (31.75)	3	3.500 (88.90)	81 (522)
06-1302-0914	10 (254.0)	14 (355.6)	1.250 (31.75)	3	3.500 (88.90)	1.500 (38.10)	4	3.500 (88.90)	117 (755)
06-1302-0915	10 (254.0)	18 (457.2)	1.250 (31.75)	3	3.500 (88.90)	1.250 (31.75)	5	3.750 (95.25)	153 (987)
06-1302-0916	12 (304.8)	12 (304.8)	1.250 (31.75)	4	3.000 (76.20)	1.250 (31.75)	4	3.000 (76.20)	121 (780)
06-1302-0917	12 (304.8)	16 (406.4)	1.250 (31.75)	4	3.000 (76.20)	1.250 (31.75)	5	3.250 (82.55)	165 (1064)
06-1302-0918	12 (304.8)	20 (508.0)	1.250 (31.75)	4	3.000 (76.20)	1.000 (25.40)	6	3.500 (88.90)	209 (1348)
06-1302-0919	12 (304.8)	24 (609.6)	1.250 (31.75)	4	3.000 (76.20)	1.250 (31.75)	7	3.500 (88.90)	253 (1632)



Parker Hannifin Corporation
Chomerics Division

77 Dragon Court
Woburn, MA 01801
Phone 781 935 4850
Fax 781 933 4318
chomailbox@parker.com
parker.com/chomerics

CHODS1200 July 2025

©2025 Parker Hannifin Corporation



We're Here to Help

Scan QR code or visit parker.com/chomerics to:

- [Request a Free Sample](#)
- [Talk to an Expert](#)
- [Get a Quote](#)
- [Find Where to Buy](#)

