

## Output Flange Cover Plates for 890/897 Series

Chelsea has released the following kits for the 890/897 Power Take-Off (PTO) Series for use when installing these PTO's on Allison 3000/4000 series transmission and running the vehicle/PTO without a pump installed.

Due to the wet-spline output options with the 890/897 Series and the possibility of moving/running a vehicle without a pump installed on the PTO, transmission oil may be lost because of the unsealed output.

Use the following kits for the output listed to seal the open end of the PTO to prevent lost of transmission fluid. All kits include a cover plate, bolts and an o-ring.

Output Flange Option	Cover Plate Kit Number	List Price
XS	329654X	\$92.23
XK, AF & AZ	329658X	\$92.23
XY	329659X	\$35.94

NOTE: See back of this bulletin for Bills of Material.

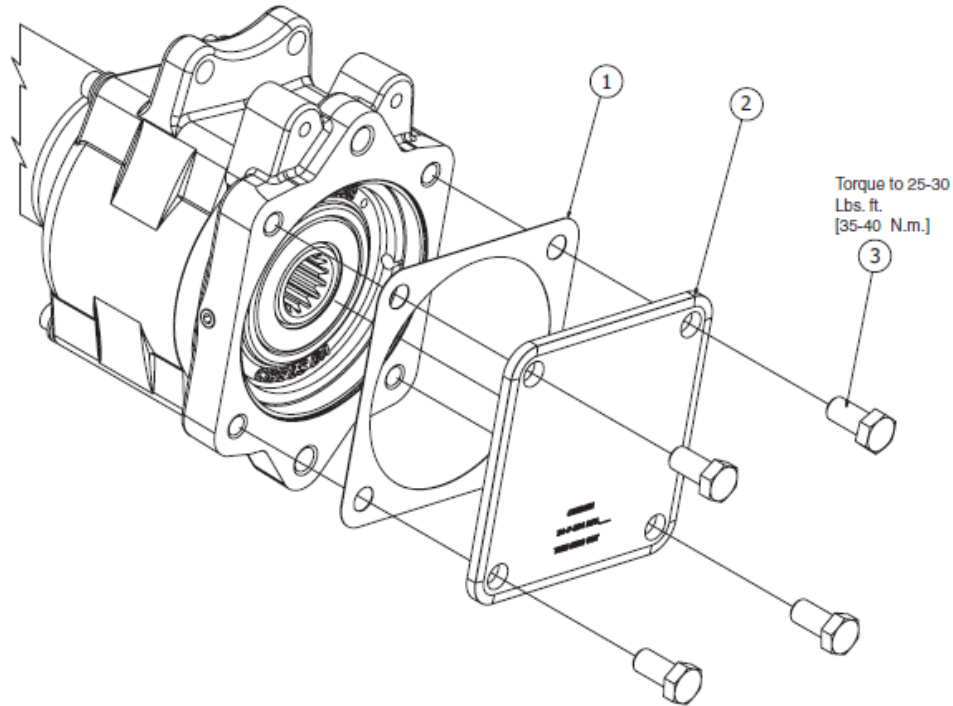
If you have questions about this bulletin or other technical questions, contact us at:

US: Chelsea Customer/Technical Services at **1-888-PH4-TRUK** (1-888-744-8785)  
Canada: Parker Hannifin Canada, Motion & Controls Division 905-693-3020



Walt Harris  
Product Sales Manager  
Chelsea Products

## Wet Spline Output Cover Plates



**KITS:** 329654X "XS" Output  
329658X "XK", "AF", "AZ" Output  
329659X "XY" Output

Item	Part Number	Description	Quantity
1	22-P-25-2 35-P-104 379943	Gasket "XS" Output .....	1 or
		Gasket "XK", "AF", "AZ" Output.....	1 or
		Gasket "XY" Output .....	1
2	34-P-284 34-P-285 379940	Cover "XS" .....	1 or
		Cover "XK", "AF", "AZ" .....	1 or
		Cover "XY" .....	1
3	378433-10 378433-10 379579-4	Capscrew "XS" .....	1 or
		Capscrew "XK", "AF", "AZ" .....	1 or
		Capscrew "XY" .....	1