

# HPD – PHARMACEUTICAL FILTER HOUSINGS

## LIQUID & GAS – DEMI HOUSING

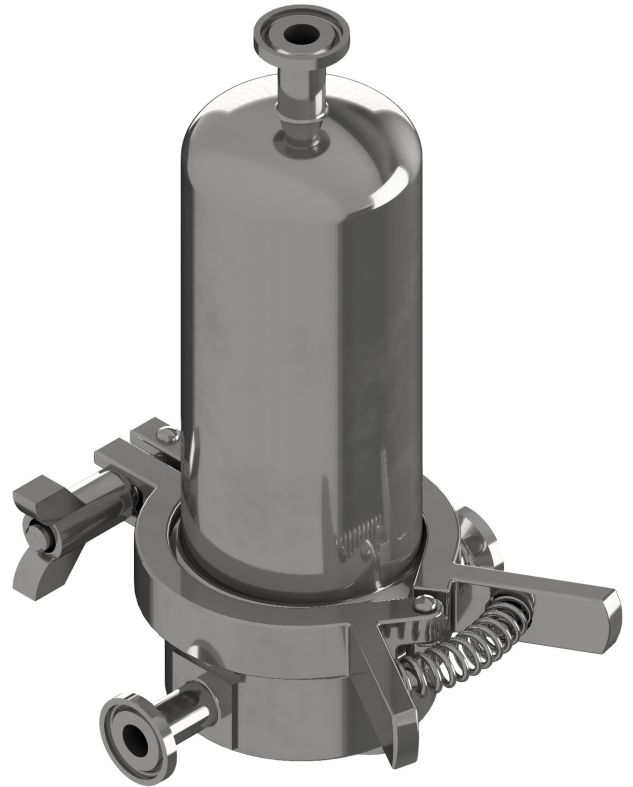
The HPD range is specifically designed for low flow rate critical applications where a focus on hygiene is required.

HPD housings are manufactured to provide a 0.4µm Ra crevice-free sanitary finish on all internal surfaces. The hygienic design ensures that the housing is easy to clean and can be sanitized or steam sterilized readily.

The HPD range accepts Parker's full range of Trueseal (126) or Z-Style (116) filter cartridges of nominal lengths 2.5" and 5".

### Features

- Hygienic, crevice-free design with easy draining
- 0.4µm Ra internal finish
- High quality cast Vee Clamp for ease of use, safety and security
- PED 2014/68/EU and ATEX 2014/34/EU compliant
- Suitable for use with PED Group 1 & 2 liquids and gases



### Specifications

Materials:	316L Stainless Steel
Gasket Materials:	Silicone, EPDM, Gylon®
Housing Closure:	Clamp
Internal Finish:	0.4µm Ra mechanically polished, degreased sump and electropolished base
External Finish:	Ra 0.8µm or better
No. of Cartridges:	1
Cartridge Height:	2.5", 5"
Cartridge Location:	Trueseal (126), Z-Style (116)



## Connections

Inlet/Outlet: 0.5" or 1" Tri-Clamp® (BS4825 Pt3)  
 Vent: 0.5" Tri-Clamp® (BS4825 Pt3)  
 Drain: 0.5" Tri-Clamp® (BS4825 Pt3)

## Documentation

Each filter housing is supplied as standard with a Hydrotest Certificate, EU Declaration, Material Certification, Surface Finish Certification and IOMI.

## Design Conditions

Liquid (Group 1 & 2): FV - 10barg @150°C  
 Gas (Group 1 & 2): FV - 10barg @150°C  
 PED 2014/68/EU: Compliant  
 PESR 2016 No1105: Compliant  
 ATEX: Compliant with 2014/34/EU,  
 Explosive Atmosphere Regulations  
 2016  
 II 2G Ex h IIC T150 Gb  
 II 2D Ex h IIC T150 Db  
 Fluid Groups: Liquid 1 & 2  
 Gases 1 & 2  
 Exceptions: Group 1 liquids - Explosive  
 Markings: CE

## Ordering Information

HPD	-	01			-			T					
Code	No. of Filters	Code	Height	Code	Location	Code	Connection Size	Code	Connection Type	Code	O-Ring	Code	Document Pack
01	1	A	5"	T	True Seal	A	0.5"	T	Tri-Clamp®	E	EPDM	S	Standard
		B	2.5"	Z	Z-Style	B	1"			S	Silicone		
										G	Gylon®		

For further information refer to drawing number 179503121

Gylon® is a registered trademark of Garlock  
 Tri-Clamp® is a registered trademark of ALFA LAVAL CORPORATE AB  
 Note: All Tri-Clamp® connections conform to BS4825 Pt. 3

