

# LORD® 7800 FAST CURE URETHANE ADHESIVE

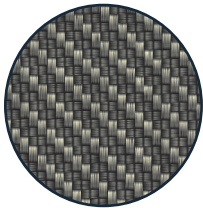
LORD® Urethane Adhesives are two-component adhesive systems used to bond a variety of materials including cloth, paper, plastics, primed metal, foam, rubber and more.

## Features & Benefits

- Excellent Sag Resistance - Thixotropic (non-sag and gap filling capability)
- Consistent Cure Speeds - Low cure exotherm (rate of cure less affected by bondline thickness)
- Equal Mix Ratio - Easy to mix and apply
- Enhanced Regulatory Profile - Heavy metal free
- Gravity Feed Possible - In addition to cartridges
- Environmentally Recommended - Does not contain ozone depleting chemicals



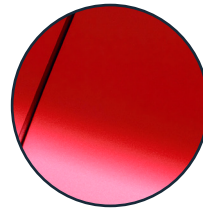
## Substrates/Applications



Thermoset Composites



Engineered Plastics



Painted Metal

Product	Part #	Size	Ratio	LORD-Pak Manual Dispensing Gun	LORD-Pak Pneumatic Dispensing Gun	Mixing Tip (12)	Mixing Tip (144)	Plunger
7800-A/C	3027334	200 mL	1:1	3029937	3027081	3001173	3001195	-
7800-A/D	3027333	50 mL	1:1	3001112	-	3004476	3009534	3009588*
7800-A/D	3027335	200 mL	1:1	3029937	3027081	3001173	3001195	-

\*LORD-Pak 50mL Dispensing gun #3001112 ships with a 1:1/2:1 plunger. Plunger part number is listed for replacement purposes on 1:1/2:1 products. A separate plunger will need to be purchased for 4:1 or 10:1 ratio products.

## Typical Properties\*\*

	7800-A Resin	7800-C Curative	7800-D Curative
Appearance	Black Liquid	Tan Liquid	Tan Liquid
Viscosity, cP @ 77°F (25°C)	8000 - 25,000	33,000 - 60,000	33,000 - 60,000
Density, lb/gal (kg/m <sup>3</sup> )	10.7 - 11.85 (1282 - 1420)	10.0 - 10.7 (1198 - 1282)	10.0 - 10.7 (1198 - 1282)
Flash Point (Closed Cup), °F (°C)	>200 (>93)	>200 (>93)	>200 (>93)

\*\*Data is typical and not to be used for specification purposes.

## Typical Properties\*\* of Resin Mixed with Curative

	7800-A/C	7800-A/D
Mix Ratio by Volume, Resin to Curative	1:1	1:1
Solids Content by Weight, %	100	100
Working Time, minutes @ 75°F (24°C)	2-4	5-7
Time to Handling Strength, minutes @ 75°F (24°C)	12	15

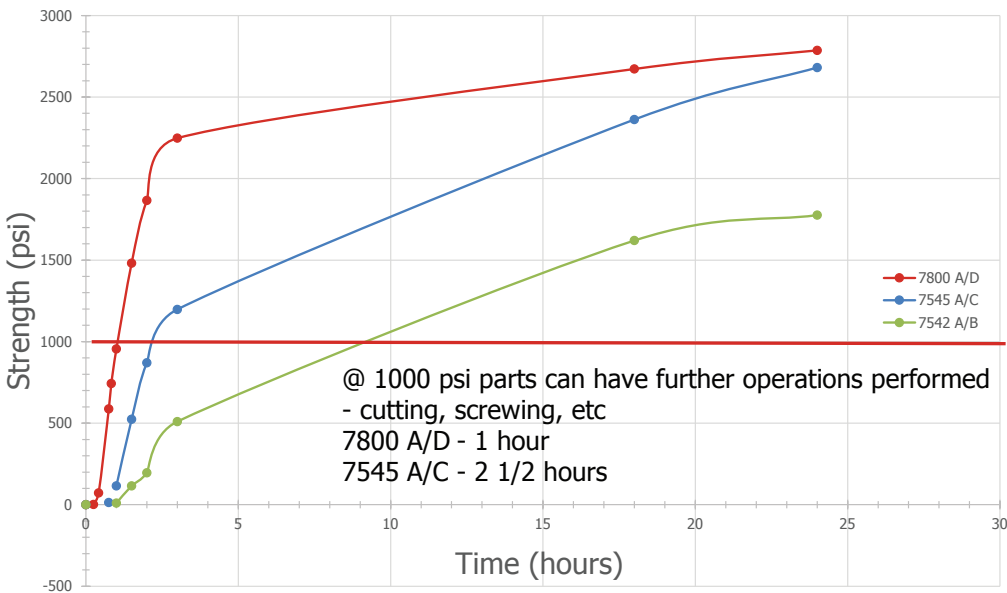
\*\*Data is typical and not to be used for specification purposes.

## Typical Cured Properties\*\*

Lap Shear Strength, psi	1000-2500
Peel Strength, psi Cross peel	250-500
Temperature Range, °C	-30 to 80
Elongation, %	130
Tensile Strength, psi	3000

\*\*Data is typical and not to be used for specification purposes.

## Comparison of LORD Urethanes time to reach 1000 psi



Parker Lord  
**Engineered Materials Group**  
 111 LORD Drive  
 Cary, NC 27511-7923  
 USA  
 phone +1 877 Ask Lord (275-5673)  
[www.parker.com/APS](http://www.parker.com/APS)

PB8223 OD 10/24 Rev.5

Information and specifications subject to change without notice and without liability therefor. Trademarks used herein are the property of their respective owners.

© 2024 Parker Hannifin Corporation

