

LORD® 7610DTM

Direct-to-Metal Adhesive/Sealant for Industrial Assembly

LORD® 7610DTM direct-to-metal adhesive/sealant is a single-component, moisture-cure product offering excellent adhesion to various substrates including many plastics, glass, concrete, wood and metals, especially precoated metals.

Features & Benefits:

- **Durable** - creates high strength bonds, replacing mechanical fastening methods; exhibits excellent primerless adhesive properties.
- **Convenient** - requires no mixing; cures quickly even at low temperatures; requires no ovens or other heat sources for curing. Easy to dispense with manual applicator. Easy to tool and can be welded through wet or dry.
- **Chemically Resistant** - solvent resistant when cured. Painting and most cleaning processes do not affect bond strength.
- **Temperature Resistant** - uncured material can endure 225°F (107°C) for 60 minutes, and cured material can endure 325°F (163°C) for 60 minutes with no negative effect.
- **Environmentally Resistant** - provides excellent UV resistance and corrosion protection. Non-yellowing. Resists weathering and aging.
- **Non-Sag** - remains in position when applied on vertical or overhead surfaces, allowing for greater process flexibility.
- **Environmentally Recommended** - low VOC; no solvent.
- **Increases Through-put** - skins in 15-45 minutes; paintable immediately.

Part #	Description	Cartridge Size	VOC	Mixing Nozzle	Dispensing Gun
3029094	LORD 7610DTM WHT Cartridge	1/10th Gallon	0.21 lbs/gallon	3015312	3023577



Contact Information:

Parker Lord
Engineered Materials Group
111 LORD Drive
Cary, NC 27511-7923
USA

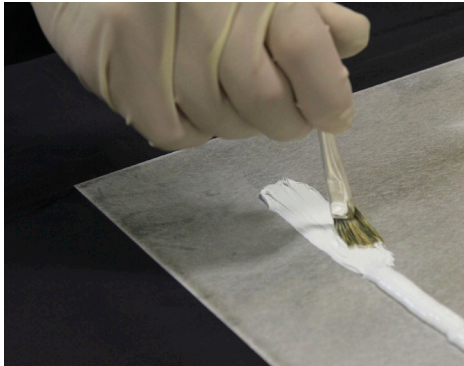
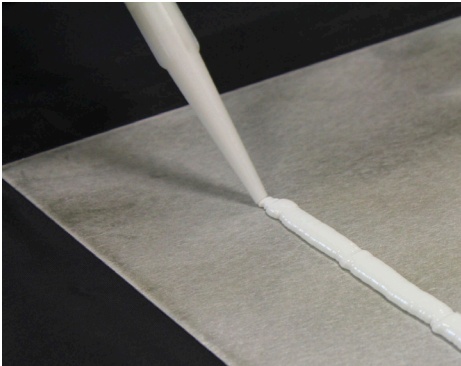
phone +1 877 Ask Lord (275-5673)

www.Parker.com/APS



ENGINEERING YOUR SUCCESS.

Application:



Standard Manual Caulking Gun



LORD 7610DTM Pneumatic Gun
(Part number: 3023577)

Technical Data*	
Appearance	White Paste
Skin Time	15-45 minutes @ 77°F (25°C), 50% RH
Work Time	25-35 minutes @ 77°F (25°C), 50% RH
Handling Time	6-12 hours @ 77°F (25°C)
Paint Time	Immediately and up to 30 days without a scuff
Hardness (Shore A)	50
Tensile Strength	200 psi (1.38 MPa) minimum
Lap Shear Strength	200-500 psi (1.38-3.45 MPa)
Elongation (ASTM D412)	400% minimum

*Data is typical and not to be used for specification purposes.