

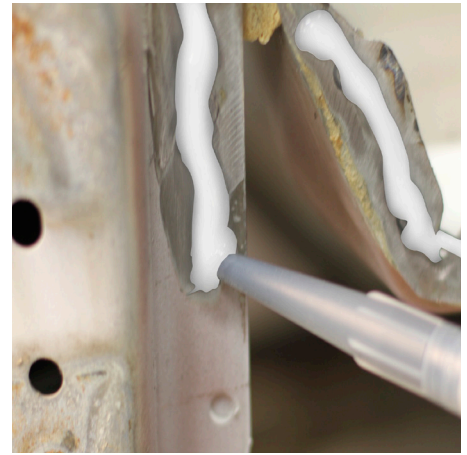
Fusor® 801DTM

Direct-to-Metal Sealer

Fusor® 801DTM direct-to-metal sealer is a one-component, moisture cure product with corrosion protection. Our direct-to-metal options reduce cost and improve throughput in autobody seam sealing, heavy duty truck, bus and trailer repair applications.

Features & Benefits:

- **Durable** – excellent corrosion protection, and seals against leaks.
- **Convenient** – 15 month shelf life; requires no mixing; easy to dispense, tool, hold brush marks and can be welded through wet or dry. Can be applied to primer or directly to bare metal.
- **Chemically Resistant** – solvent resistant when cured.
- **Temperature Resistant** – uncured material can endure 225°F (107°C) for 60 minutes, and cured material can endure 325°F (163°C) for 60 minutes with no negative effect.
- **Environmentally Resistant** – provides excellent UV resistance and corrosion protection. Non-yellowing. Resists weathering and aging.
- **Non-Sag** – remains in position when applied on vertical or overhead surfaces, allowing for greater process flexibility.
- **Environmentally Recommended** – low VOC; no solvent.
- **Increases Throughput** – can be applied directly to bare metal skins in 15-45 minutes; paintable immediately.



Contact Information:

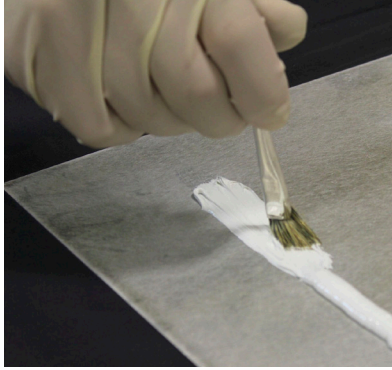
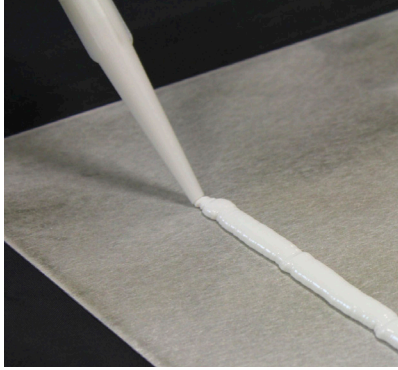
Parker LORD
Engineered Materials Group
111 LORD Drive
Cary, NC 27511-7923
USA

phone +1 800 234 Fusor (3876)

www.fusor.com



ENGINEERING YOUR SUCCESS.



Fusor 313 Manual Applicator

Fusor 314 Pneumatic Applicator

TECHNICAL DATA*	
Appearance	Neutral, White, or Black Paste
Skin Time	15-45 min, 50% RH
Paint Time	Immediately or up to 30 days without a scuff
Hardness (Shore A)	50
Tensile Strength	200 psi (1.38 MPa)
Lap Shear Strength	200-500 psi (1.38-3.45 MPa)
Elongation	400% minimum

*Data is typical and not to be used for specification purposes.
All data is at 70°F (21°C) unless otherwise noted.

Part #	Description	Cartridge Size	Mixing Nozzle	Applicator	Case Qty	Weight	VOC by Weight
801DTM (white)	Direct-to-Metal Sealer	9.5 oz	412	313 or 314 Applicator	12	8 lbs	0.70%