

| REVISIONS |      |             |      |          |
|-----------|------|-------------|------|----------|
| ZONE      | REV. | DESCRIPTION | DATE | APPROVED |
|           |      |             |      |          |
|           |      |             |      |          |

**PROPRIETARY AND CONFIDENTIAL**  
THE INFORMATION CONTAINED IN THIS DRAWING IS THE SOLE PROPERTY OF SEA RECOVERY CORPORATION. ANY REPRODUCTION IN PART OR AS A WHOLE WITHOUT THE WRITTEN PERMISSION OF SEA RECOVERY CORPORATION IS PROHIBITED.

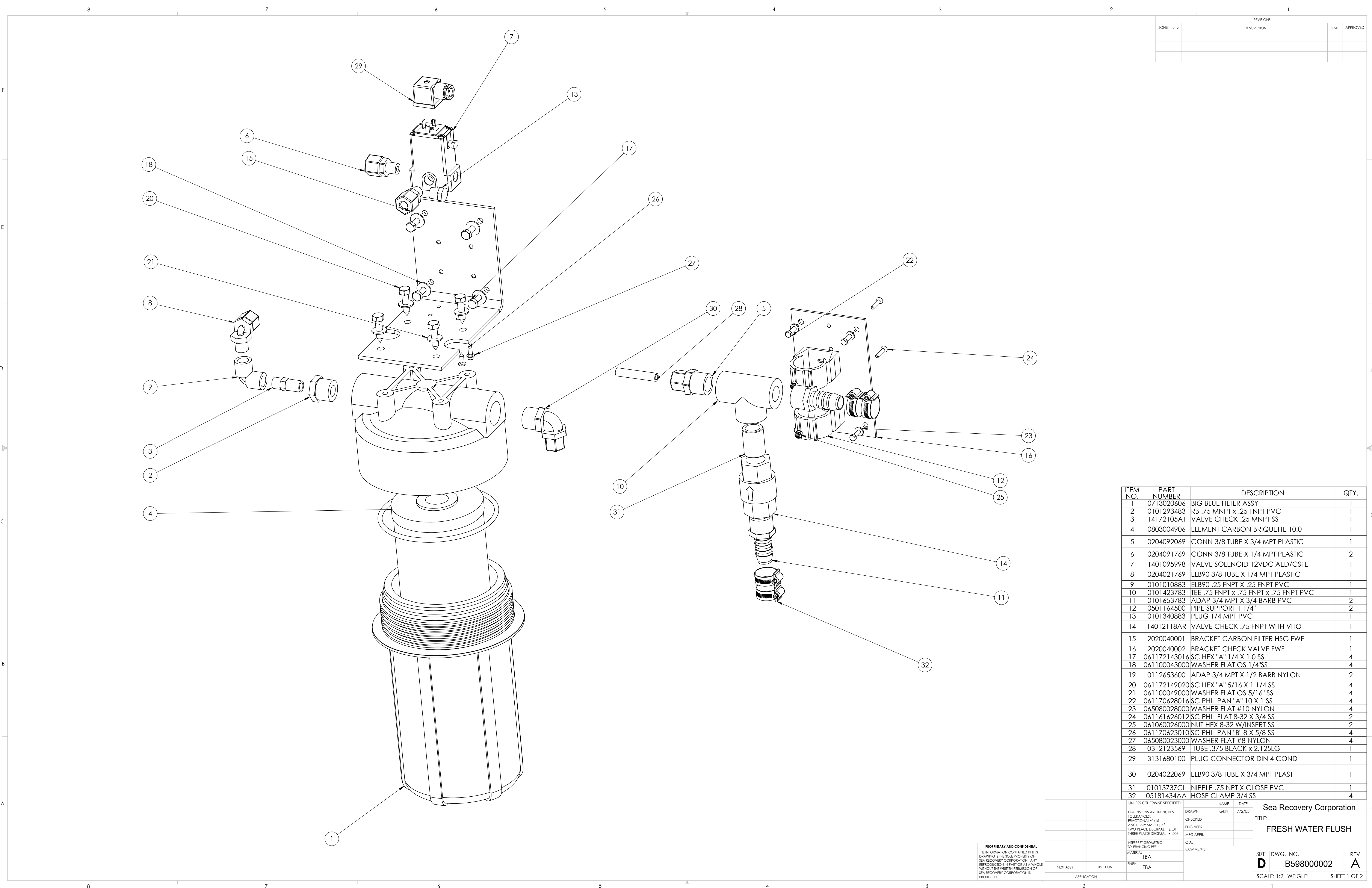
|             |         |                                      |           |      |        |
|-------------|---------|--------------------------------------|-----------|------|--------|
|             |         | UNLESS OTHERWISE SPECIFIED:          |           | NAME | DATE   |
|             |         | DIMENSIONS ARE IN INCHES             |           | GKN  | 7/2/03 |
|             |         | TOLERANCES:                          | DRAWN     |      |        |
|             |         | FRACTIONAL $\pm 1/16$                | CHECKED   |      |        |
|             |         | ANGULAR: MACH $\pm .5^\circ$         | ENG APPR. |      |        |
|             |         | TWO PLACE DECIMAL $\pm .01$          | MFG APPR. |      |        |
|             |         | THREE PLACE DECIMAL $\pm .003$       |           |      |        |
|             |         | INTERPRET GEOMETRIC TOLERANCING PER: | Q.A.      |      |        |
|             |         | MATERIAL                             | COMMENTS: |      |        |
|             |         | TBA                                  |           |      |        |
|             |         | FINISH                               |           |      |        |
|             |         | TBA                                  |           |      |        |
| NEXT ASSY   | USED ON |                                      |           |      |        |
| APPLICATION |         |                                      |           |      |        |

Sea Recovery Corporation

TITLE:  
FRESH WATER FLUSH

SIZE DWG. NO. REV  
**D** B598000002 **A**

SCALE: 1:2 WEIGHT: SHEET 2 OF 2



| REVISIONS |      |             |      |          |
|-----------|------|-------------|------|----------|
| ZONE      | REV. | DESCRIPTION | DATE | APPROVED |
|           |      |             |      |          |
|           |      |             |      |          |

| ITEM NO. | PART NUMBER  | DESCRIPTION                            | QTY. |
|----------|--------------|--|------|
| 1        | 0713020606   | BIG BLUE FILTER ASSY                   | 1    |
| 2        | 0101293483   | RB .75 MNPT x .25 FNPT PVC             | 1    |
| 3        | 14172105AT   | VALVE CHECK .25 MNPT SS                | 1    |
| 4        | 0803004906   | ELEMENT CARBON BRIQUETTE 10.0          | 1    |
| 5        | 0204092069   | CONN 3/8 TUBE X 3/4 MPT PLASTIC        | 1    |
| 6        | 0204091769   | CONN 3/8 TUBE X 1/4 MPT PLASTIC        | 2    |
| 7        | 1401095998   | VALVE SOLENOID 12VDC AED/CSFE          | 1    |
| 8        | 0204021769   | ELB90 3/8 TUBE X 1/4 MPT PLASTIC       | 1    |
| 9        | 0101010883   | ELB90 .25 FNPT X .25 FNPT PVC          | 1    |
| 10       | 0101423783   | TEE .75 FNPT x .75 FNPT x .75 FNPT PVC | 1    |
| 11       | 0101653783   | ADAP 3/4 MPT X 3/4 BARB PVC            | 2    |
| 12       | 0501164500   | PIPE SUPPORT 1 1/4"                    | 2    |
| 13       | 0101340883   | PLUG 1/4 MPT PVC                       | 1    |
| 14       | 14012118AR   | VALVE CHECK .75 FNPT WITH VITO         | 1    |
| 15       | 2020040001   | BRACKET CARBON FILTER HSG FWF          | 1    |
| 16       | 2020040002   | BRACKET CHECK VALVE FWF                | 1    |
| 17       | 061172143016 | SC HEX "A" 1/4 X 1.0 SS                | 4    |
| 18       | 061100043000 | WASHER FLAT OS 1/4"SS                  | 4    |
| 19       | 0112653600   | ADAP 3/4 MPT X 1/2 BARB NYLON          | 2    |
| 20       | 061172149020 | SC HEX "A" 5/16 X 1 1/4 SS             | 4    |
| 21       | 061100049000 | WASHER FLAT OS 5/16" SS                | 4    |
| 22       | 061170628016 | SC PHIL PAN "A" 10 X 1 SS              | 4    |
| 23       | 065080028000 | WASHER FLAT #10 NYLON                  | 4    |
| 24       | 061161626012 | SC PHIL FLAT 8-32 X 3/4 SS             | 2    |
| 25       | 061060026000 | NUT HEX 8-32 W/INSERT SS               | 2    |
| 26       | 061170623010 | SC PHIL PAN "B" 8 X 5/8 SS             | 4    |
| 27       | 065080023000 | WASHER FLAT #8 NYLON                   | 4    |
| 28       | 0312123569   | TUBE .375 BLACK x 2.125LG              | 1    |
| 29       | 3131680100   | PLUG CONNECTOR DIN 4 COND              | 1    |
| 30       | 0204022069   | ELB90 3/8 TUBE X 3/4 MPT PLAST         | 1    |
| 31       | 01013737CL   | NIPPLE .75 NPT X CLOSE PVC             | 1    |
| 32       | 05181434AA   | HOSE CLAMP 3/4 SS                      | 4    |

PROPRIETARY AND CONFIDENTIAL  
THE INFORMATION CONTAINED IN THIS DRAWING IS THE SOLE PROPERTY OF SEA RECOVERY CORPORATION. ANY REPRODUCTION IN PART OR AS A WHOLE WITHOUT THE WRITTEN PERMISSION OF SEA RECOVERY CORPORATION IS PROHIBITED.

|                             |         |                                 |      |                          |                   |
|-----------------------------|---------|---------------------------------|------|--------------------------|-------------------|
| UNLESS OTHERWISE SPECIFIED: |         | NAME                            | DATE | Sea Recovery Corporation |                   |
| DIMENSIONS ARE IN INCHES    |         | DRAWN                           | GKN  | 7/2/03                   | TITLE:            |
| TOLERANCES:                 |         | CHECKED                         |      |                          | FRESH WATER FLUSH |
| FRACTIONAL ± 1/16           |         | ENG APPR.                       |      |                          | SIZE DWG. NO.     |
| ANGULAR: MACH ± .5°         |         | MFG APPR.                       |      |                          | D B598000002      |
| TWO PLACE DECIMAL ± .01     |         | G.A.                            |      |                          | REV               |
| THREE PLACE DECIMAL ± .003  |         | COMMENTS:                       |      |                          | A                 |
| MATERIAL                    |         | SCALE: 1:2 WEIGHT: SHEET 1 OF 2 |      |                          |                   |
| TBA                         |         |                                 |      |                          |                   |
| FINISH                      |         |                                 |      |                          |                   |
| TBA                         |         |                                 |      |                          |                   |
| NEXT ASSY                   | USED ON |                                 |      |                          |                   |
| APPLICATION                 |         |                                 |      |                          |                   |