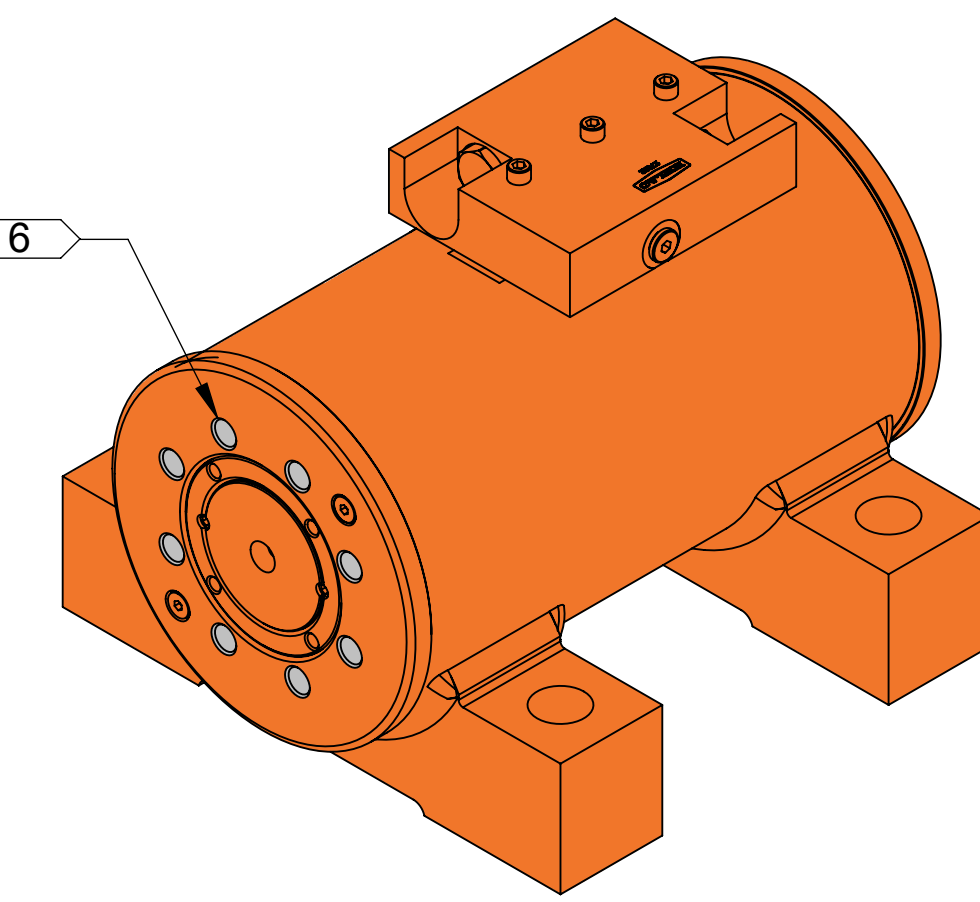
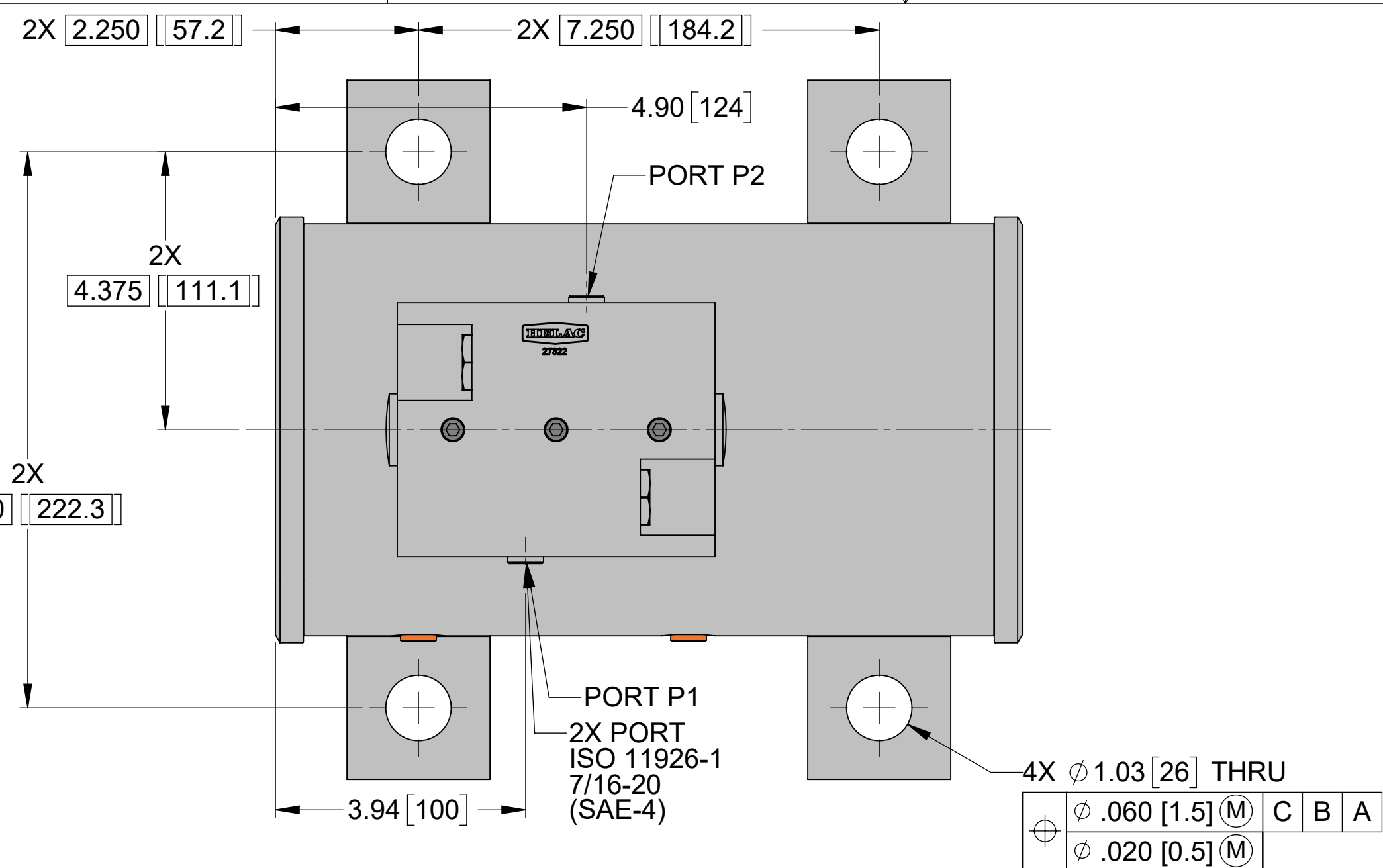
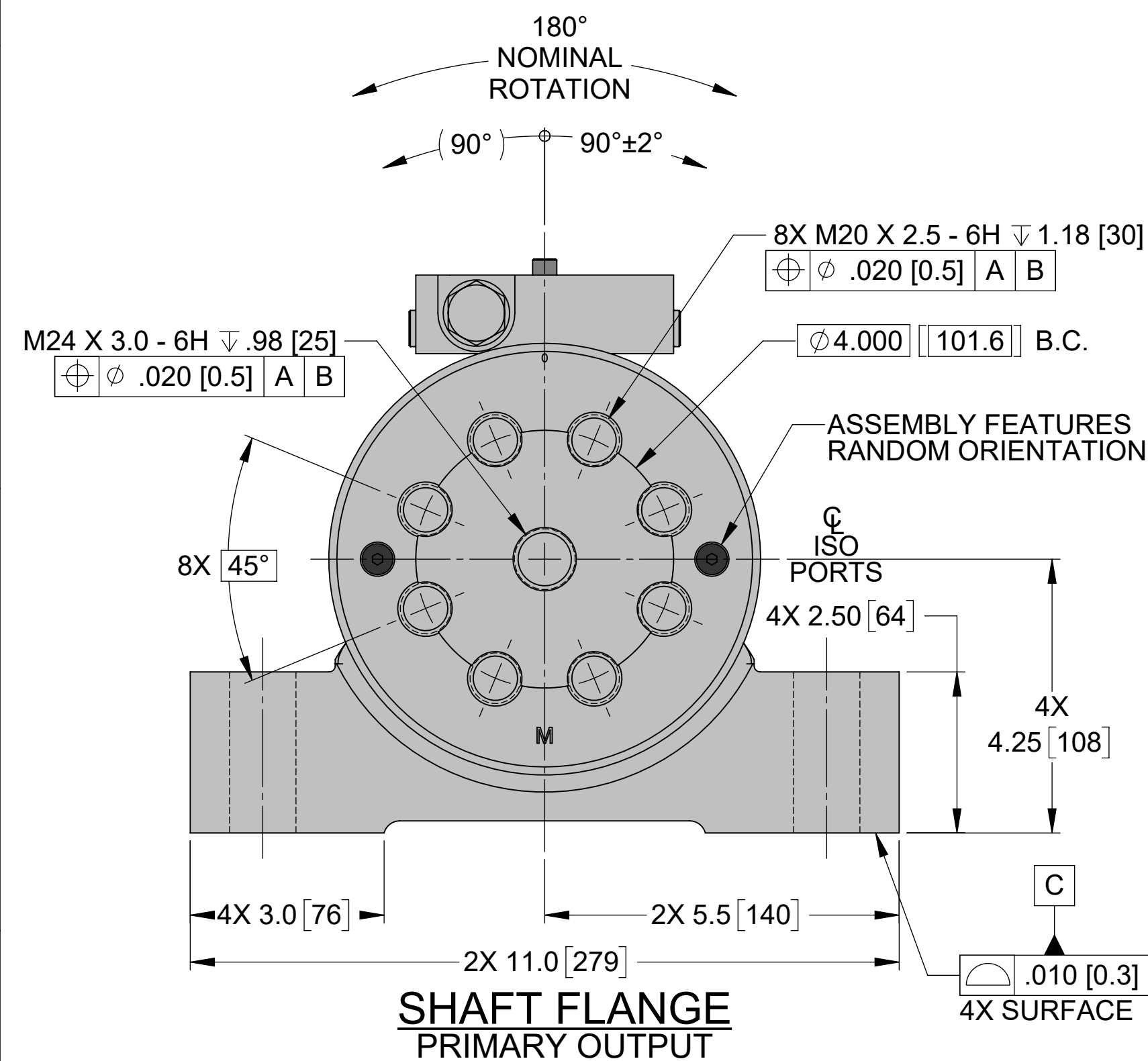


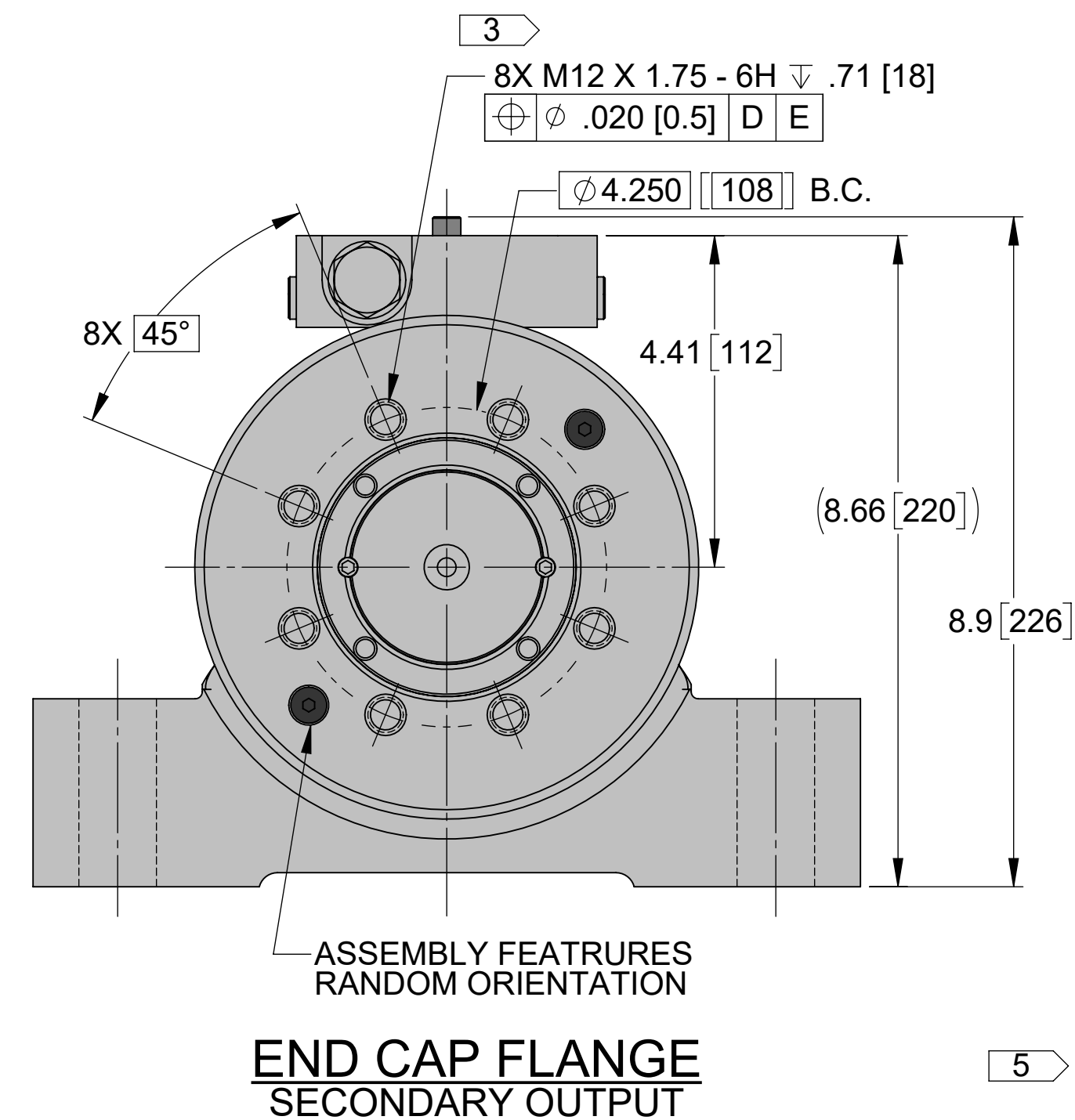
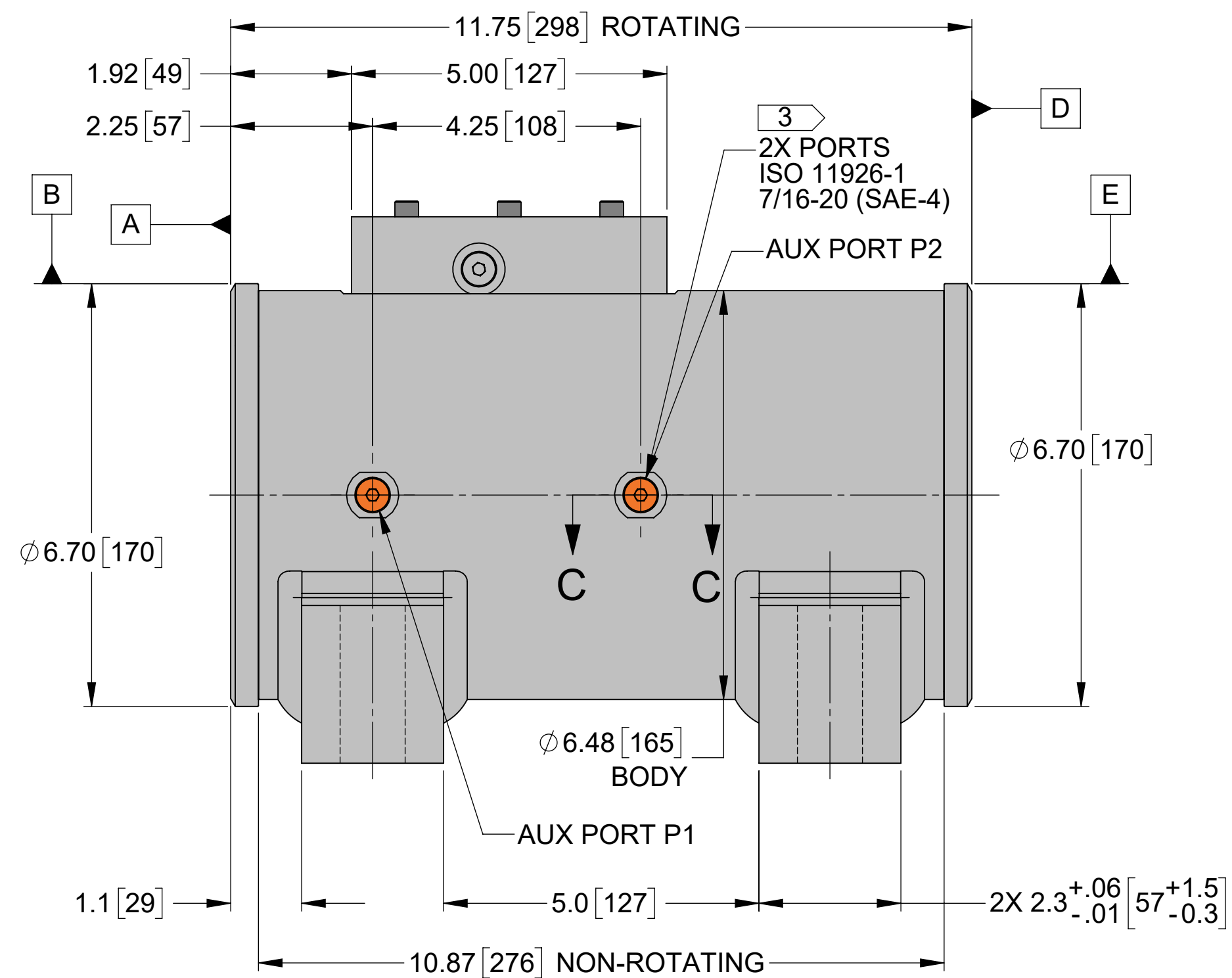
AS PAINTED
COLOR FOR REFERENCE ONLY
SCALE 1:3



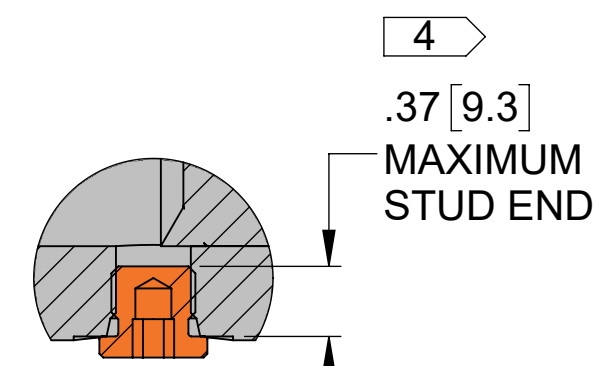
AS PAINTED
COLOR FOR REFERENCE ONLY
SCALE 1:3



SHAFT FLANGE
PRIMARY OUTPUT



SECTION C-C
SCALE 1:1

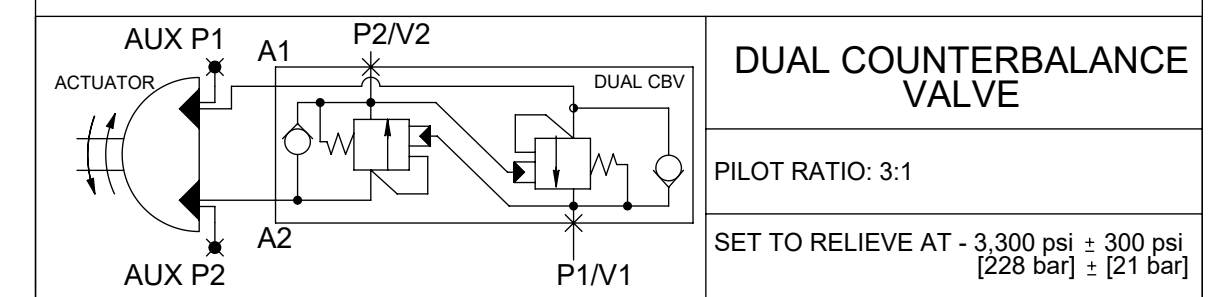
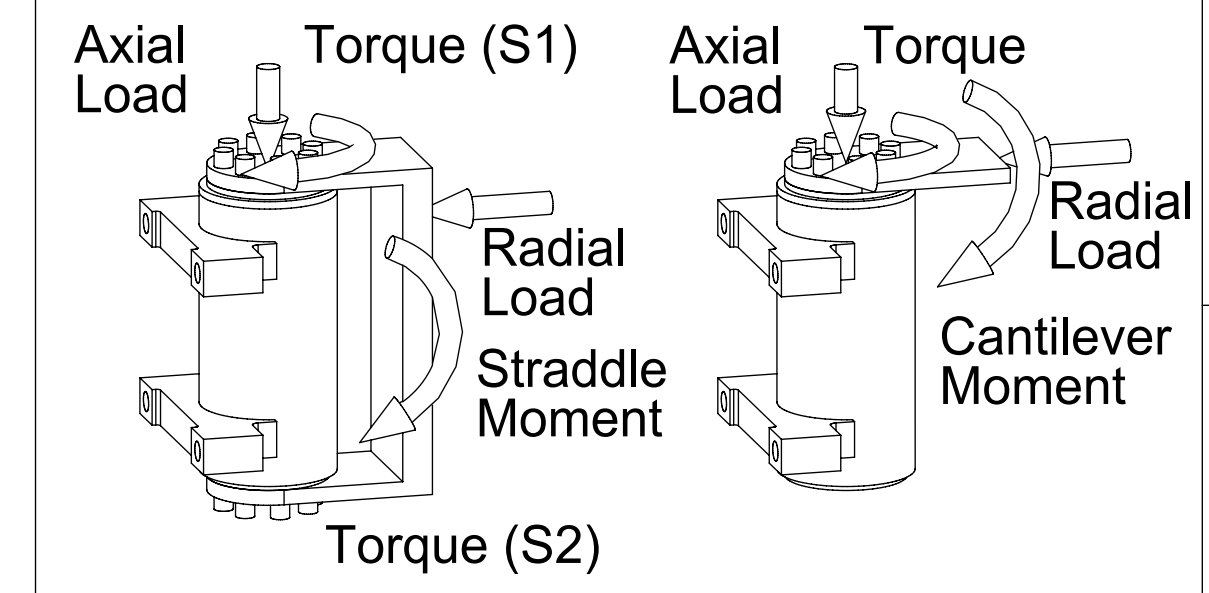


NOTES: UNLESS OTHERWISE SPECIFIED

- THE ACTUATOR IS SHIPPED IN POSITION SHOWN ($\pm 2^\circ$) (SHAFT FLANGE). AS PRESSURE IS APPLIED TO PORT P2, THE SHAFT WILL ROTATE CLOCKWISE. AS PRESSURE IS APPLIED TO PORT P1, THE SHAFT WILL ROTATE COUNTERCLOCKWISE.
- MAXIMUM BACKLASH IN GEARSET IS 1° . SEAL MOVEMENT, SEAL COMPRESSION, AND FLUID COMPRESSION MAY RESULT IN ADDITIONAL ROTATION.
- THE END CAP (SECONDARY FLANGE) OF THE UNIT FLOATS RELATIVE TO THE SHAFT. THE ENDCAP IS TIMED AS SHOWN DURING ASSEMBLY, BUT MAY SHIFT IN SHIPPING AND HANDLING. SHOULD SUCH MOVEMENT OCCUR, THE END CAP MAY BE ROTATED BACK MANUALLY.
- FLUID PORTS CONFORM TO ISO 11926-1 EXCEPT WHERE ACTUATOR HOUSING WALL IS THINNER THAN THREAD DEPTH REQUIREMENT (DIMENSION L4, ISO 11926-1). TO AVOID DAMAGE TO INTERNAL COMPONENTS, FITTING STUD END LENGTH NO TO EXCEED DIMENSION SHOWN.
- STRADDLE MOUNTING IS REQUIRED TO SUPPORT THE HIGHER RATED MOMENT LOAD SPECIFIED IN THE PERFORMANCE SPECIFICATION TABLE. BOLT CIRCLES MUST BE USED TO CLAMP THE CUSTOMER MOUNTING PLATES TO THE ACTUATOR. HELAC CORPORATION RECOMMENDS AT LEAST GRADE 8 FASTENERS TORQUED TO INDUSTRY-STANDARD VALUES. HARDENED WASHERS MAY BE REQUIRED. THREAD ADHESIVE MAY BE USED TO SECURE FASTENERS. SPLIT AND SERRATED TYPE LOCK WASHERS ARE NOT RECOMMENDED.
- NO PAINT ON INDICATED FEATURE.
- FOR MEWP APPLICATIONS PLEASE CONTACT YOUR LOCAL PARKER APPLICATION ENGINEER.

REV	DESCRIPTION	REVISIONS	DATE	RESP
A	INITIAL RELEASE		2007/02/16	RV
B	UPDATE TO CURRENT STANDARDS		2020/10/30	MCC

FOOT MOUNT



WARNING

THIS DOCUMENT AND THE INFORMATION IT CONTAINS IS CONFIDENTIAL AND PROPRIETARY TO PARKER SYSTEMS CORPORATION AND ITS AFFILIATES ("PARKER"), MAY NOT BE COPIED OR DISCLOSED TO OTHERS OR USED FOR ANY PURPOSE OTHER THAN CONDUCTING BUSINESS WITH PARKER, AND MUST BE RETURNED OR DESTROYED AND ALL FURTHER USE DISCONTINUED AT PARKER'S REQUEST.

THE RECIPIENT OF THIS DOCUMENT IS ADVISED THAT IMPROPER SELECTION OR IMPROPER USE OF PARKER SYSTEMS OR COMPONENTS CAN CAUSE DEATH, PERSONAL INJURY AND PROPERTY DAMAGE, AND IS SOLELY RESPONSIBLE THROUGH ITS OWN ANALYSIS AND TESTING FOR THE FINAL SELECTION OF PARKER SYSTEM AND COMPONENTS AND ASSURING THAT ALL PERFORMANCE, ENDURANCE, MAINTENANCE, SAFETY AND WARNING REQUIREMENTS OF THE INTENDED APPLICATION ARE MET.

COPYRIGHT PARKER. YEAR OF COPYRIGHT IS THE YEAR(S) INDICATED ON THIS DOCUMENT. ALL RIGHTS RESERVED.

PERFORMANCE SPECIFICATIONS

DRIVING TORQUE: AT OPERATING PRESSURE, RATED	25,000 in-lb	2825 Nm
HOLDING TORQUE: AT OPERATING PRESSURE, RATED	62,900 in-lb	7108 Nm
MAXIMUM PRIMARY OUTPUT TORQUE	100% OF TOTAL	
MAXIMUM SECONDARY OUTPUT TORQUE	0% OF TOTAL	
OPERATING PRESSURE, RATED	3,000 psi	207 bar
NOMINAL ROTATION	180°	
DISPLACEMENT	(44.3 in³)	(725.9 cm³)
OPERATING OIL TEMPERATURE	0/+160°F	-18/+71°C
DRY WEIGHT	(117 lb)	(53 kg)
STRADDLE MOMENT, RATED	167,200 in-lb	18890 Nm
CANTILEVER MOMENT, RATED	100,000 in-lb	11300 Nm
RADIAL LOAD, RATED	12,300 lb	5579 kg
AXIAL LOAD, RATED	3,100 lb	1406 kg

UNLESS OTHERWISE SPECIFIED, DIMENSIONS ARE IN INCHES. METRIC DIMENSIONS ARE FOR REFERENCE ONLY. FORMAT: INCHES [mm]

XXX = ±.010 [0.254]
 XX = ±.030 [0.762]
 X = ±.060 [1.524]
 (X.XXX [X.XXX]) = REFERENCE ✓ = μin

DIMENSIONING AND TOLERANCING PER ASME Y14.5-2009

THIRD ANGLE PROJECTION

DO NOT SCALE DRAWING

CUSTOMER REVIEWED

SIGNATURE _____ DATE _____



APPROVALS	DATE	ACTUATOR	
DRAWN R. VANCE	2007/02/16	CUSTOMER INTERFACE DRAWING	
RESP ENG C. KISHLINE	2007/02/16	L20-25-M-FT-180-S2-C-H	
SIMILAR TO 29955 / 28142	ET # 8377	SIZE D	DRAWING NUMBER 32008
SCALE: 1:2	SHEET: 1 of 1		REV. B