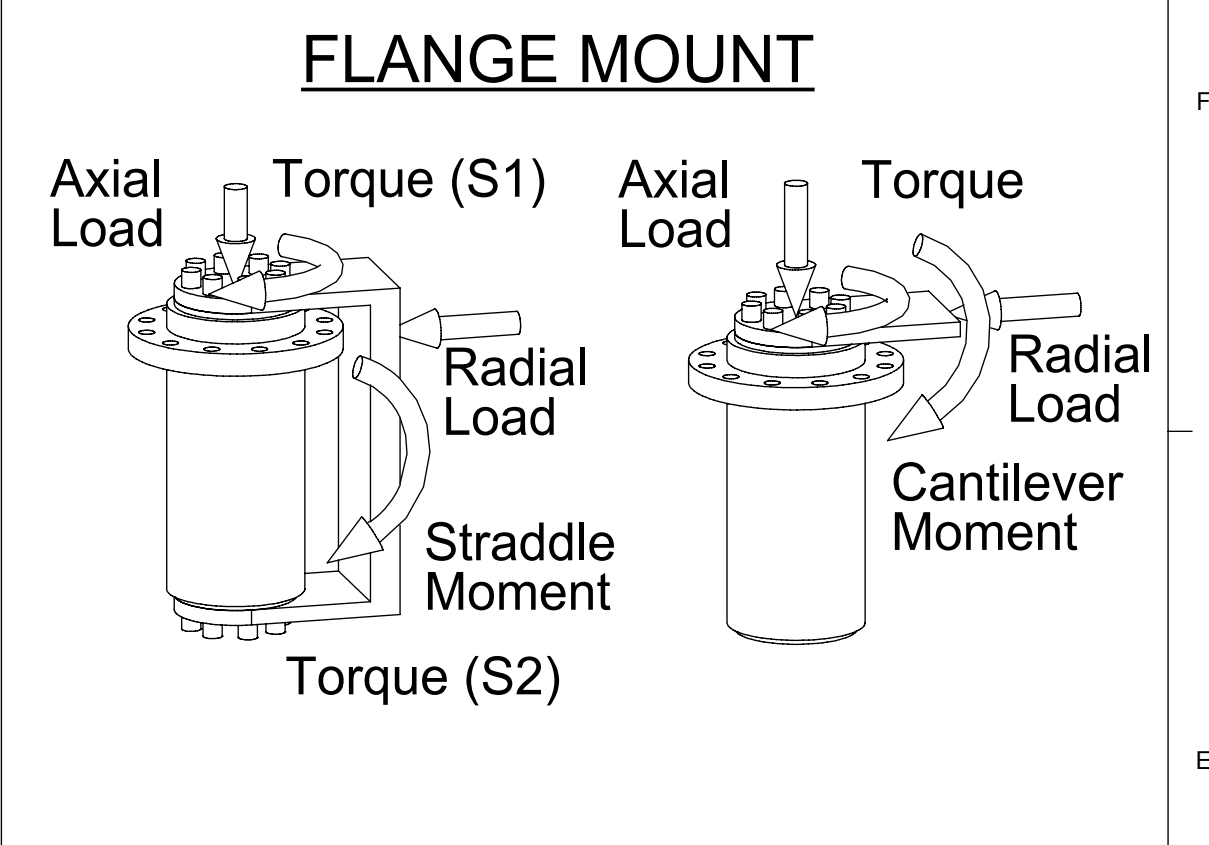


REV	DESCRIPTION	REVISIONS	DATE	RESP
C	UPDATED DRAWING TO CURRENT STANDARD.		2016/05/31	TU



WARNING

IMPROPER SELECTION, INSTALLATION OR USE OF HELAC PRODUCTS OR SYSTEMS MAY RESULT IN FAILURE AND CAUSE DEATH, PERSONAL INJURY OR PROPERTY DAMAGE.

DOCUMENTS OR INFORMATION PROVIDED BY HELAC CORPORATION, ITS SUBSIDIARIES OR AUTHORIZED DISTRIBUTORS ARE INTENDED FOR USERS HAVING TECHNICAL EXPERTISE. IT IS IMPORTANT TO THOROUGHLY ANALYZE ALL ASPECTS OF YOUR APPLICATION AND REVIEW CURRENT PRODUCT INFORMATION. THE USER IS SOLELY RESPONSIBLE FOR THE FINAL SELECTION OF ANY HELAC CORPORATION PRODUCT OR SYSTEM AND ITS SUITABILITY FOR THE APPLICATION IN QUESTION.

THE CUSTOMER IS SOLELY RESPONSIBLE FOR ENGINEERING OF MATING STRUCTURES, FASTENERS AND OTHER ASSOCIATED COMPONENTS RELATED TO THE INSTALLATION OF THE PRODUCT AND ITS ULTIMATE APPLICATION.

UNLESS OTHERWISE SPECIFIED, SEAL AND BEARING MATERIALS ARE COMPATIBLE WITH PETROLEUM-BASED HYDRAULIC FLUIDS.

HELAC PROPRIETARY NOTICE - THIS DRAWING IS THE PROPERTY OF HELAC CORPORATION. THE RECIPIENT AGREES BY ACCEPTING IT NOT TO DISCLOSE ANY INFORMATION REGARDING IT TO ANY UNAUTHORIZED PERSON. ALL DESIGN, MANUFACTURING, AND SALES RIGHTS REGARDING THIS DRAWING ARE HEREBY EXPRESSLY RESERVED BY HELAC CORPORATION.

PERFORMANCE SPECIFICATIONS

DRIVING TORQUE: AT OPERATING PRESSURE, RATED	42,000 in-lb	4746 Nm
HOLDING TORQUE: AT OPERATING PRESSURE, RATED	103,000 in-lb	11639 Nm
MAXIMUM PRIMARY OUTPUT TORQUE	100% OF TOTAL	
MAXIMUM SECONDARY OUTPUT TORQUE	0% OF TOTAL	
OPERATING PRESSURE, RATED	3,000 psi	207 bar
NOMINAL ROTATION	180°	
DISPLACEMENT	(72.2 in³)	(1183.1 cm³)
OPERATING OIL TEMPERATURE	0/+160°F	-18/+71°C
DRY WEIGHT	(149 lb)	(68 kg)
STRADDLE MOMENT, RATED	N/A	N/A
CANTILEVER MOMENT, RATED	105,000 in-lb	11865 Nm
RADIAL LOAD, RATED	8,000 lb	3629 kg
AXIAL LOAD, RATED	6,000 lb	2722 kg

UNLESS OTHERWISE SPECIFIED, DIMENSIONS ARE IN INCHES. METRIC DIMENSIONS ARE FOR REFERENCE ONLY. FORMAT: INCHES [mm]

TOLERANCES ARE:

INCHES	(mm)
XXX = ±.010	(X.X)
XX = ±.030	(X.X)
X = ±.060	(X.X)
(X.XXX) = REFERENCE	

✓ = μin

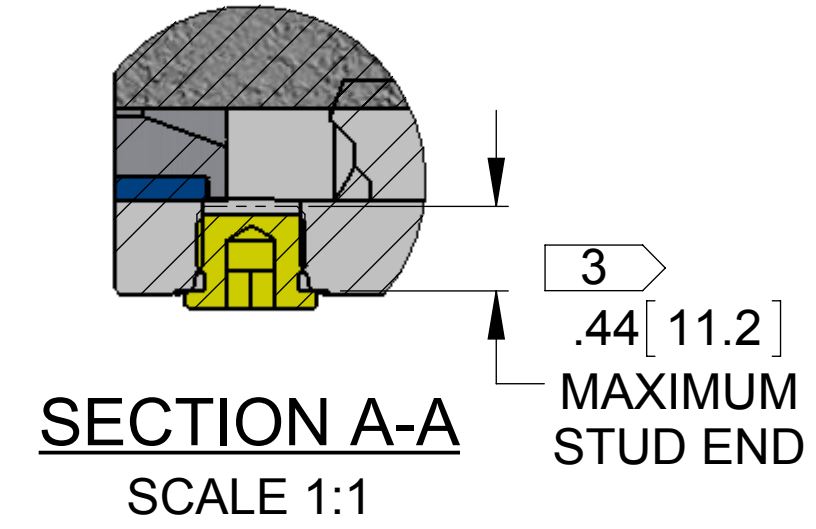
DIMENSIONING AND TOLERANCING PER ASME Y14.5-2009

THIRD ANGLE PROJECTION

DO NOT SCALE DRAWING

NOTES: UNLESS OTHERWISE SPECIFIED

1. THE ACTUATOR IS SHIPPED IN POSITION SHOWN (+/-1°) (SHAFT FLANGE) AS PRESSURE IS APPLIED TO PORT P1, THE SHAFT WILL ROTATE COUNTERCLOCKWISE.
2. MAXIMUM BACKLASH IN GEARSET IS 1°. SEAL MOVEMENT, SEAL COMPRESSION, END PLAY AND FLUID COMPRESSION MAY RESULT IN ADDITIONAL ROTATION.
3. FLUID PORTS CONFORM TO ISO 11926-1 EXCEPT WHERE ACTUATOR HOUSING WALL IS THINNER THAN THREAD DEPTH REQUIREMENT (DIMENSION L4, ISO 11926-1). TO AVOID DAMAGE TO INTERNAL COMPONENTS, FITTING STUD END LENGTHS NOT TO EXCEED DIMENSION SHOWN.
4. NO PAINT ON INDICATED FEATURE.



CUSTOMER REVIEWED

SIGNATURE _____ DATE _____

HELAC CORPORATION
 225 BATTERSBY AVENUE
 ENUMCLAW, WASHINGTON 98022
 PHONE (360) 825-1601 FAX (360) 825-1603
 www.helac.com | sales@helac.com

APPROVALS	DATE	ACTUATOR
DRAWN J. CHANG	2008/12/18	CUSTOMER INTERFACE DRAWING L30-42-M-FF-180-S1-O-H
RESP ENG C. KISHLINE	2008/12/18	
SIMILAR TO 29132	ET # 6200	SIZE D
SCALE: 1:2	SHEET: 1 of 1	DRAWING NUMBER 29127
		REV. C