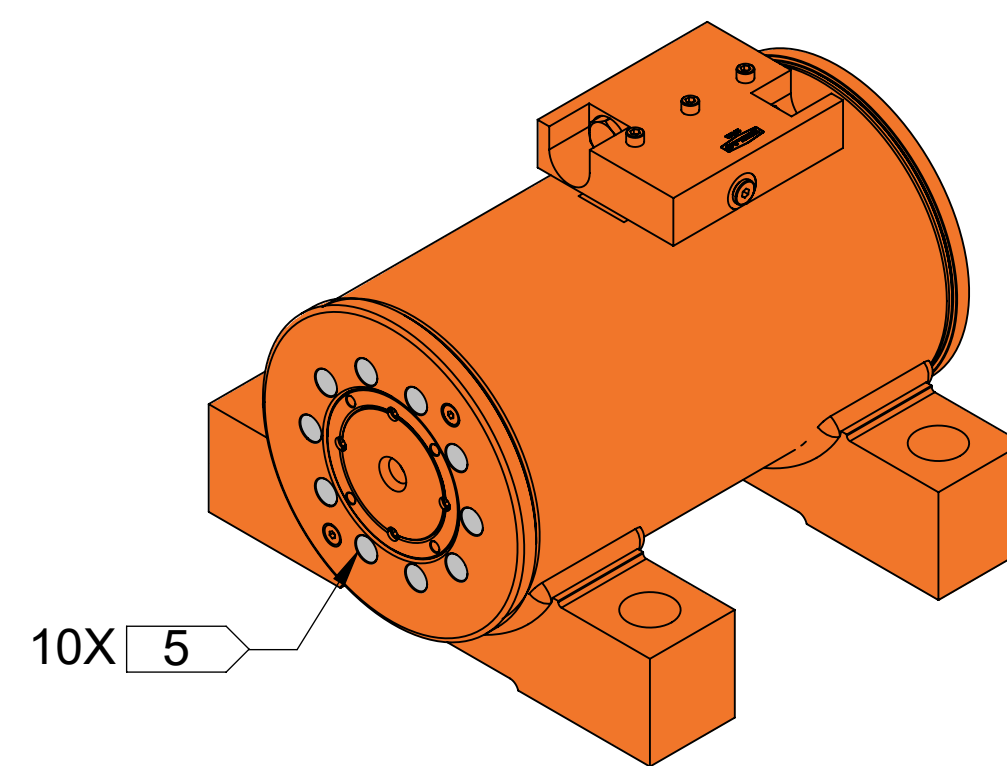
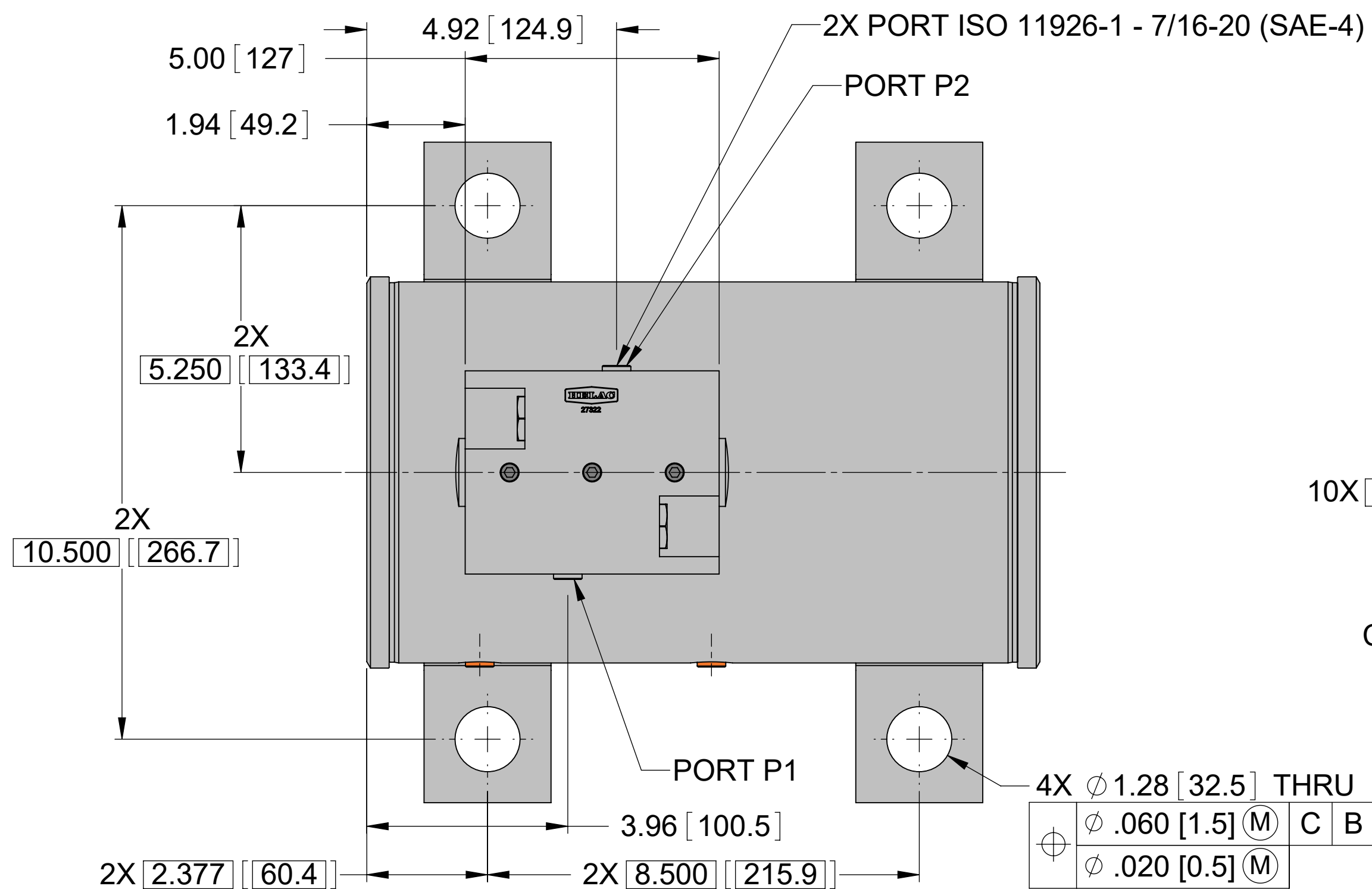
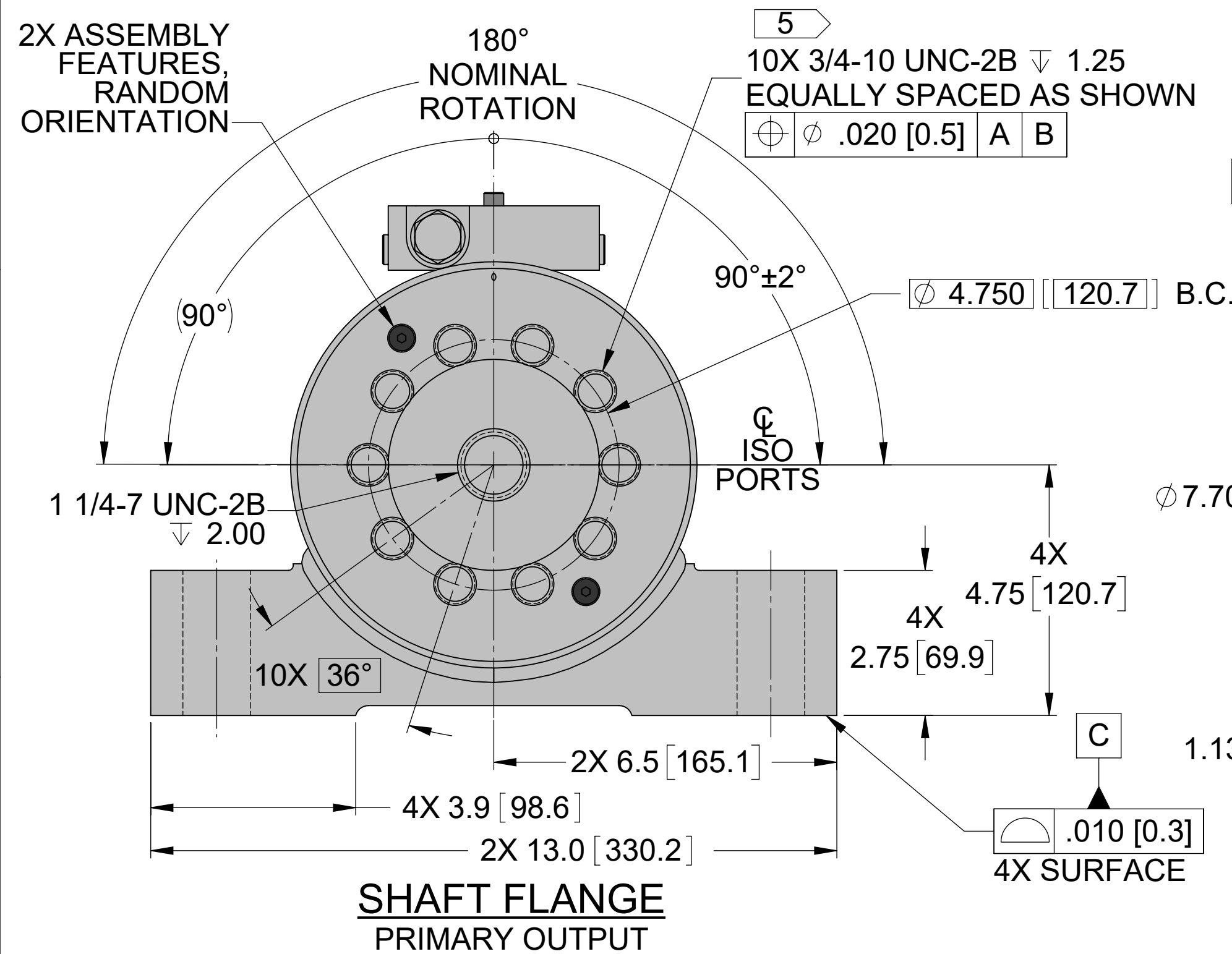


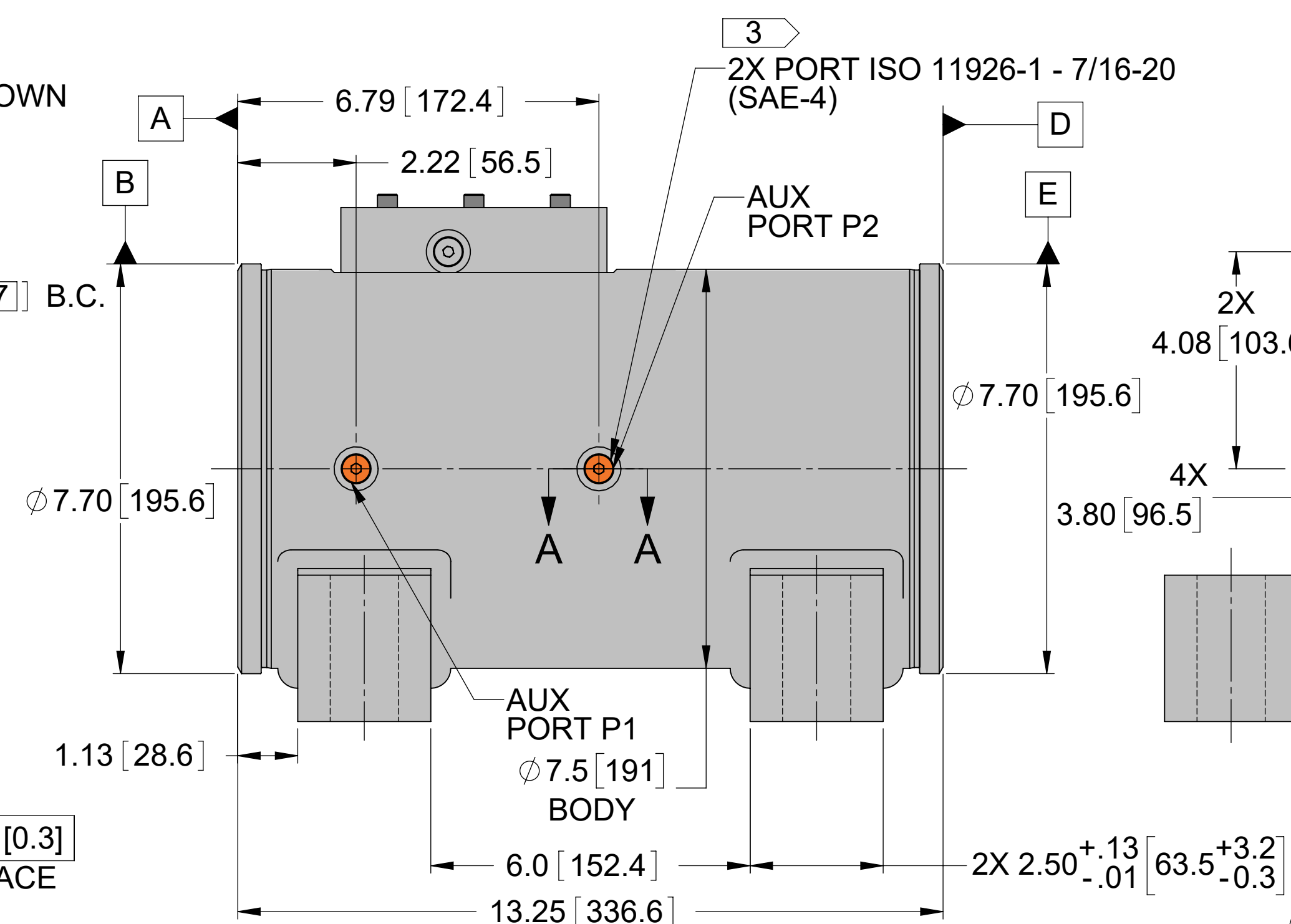
AS PAINTED
COLOR SHOWN FOR REFERENCE ONLY
SCALE 1 : 4



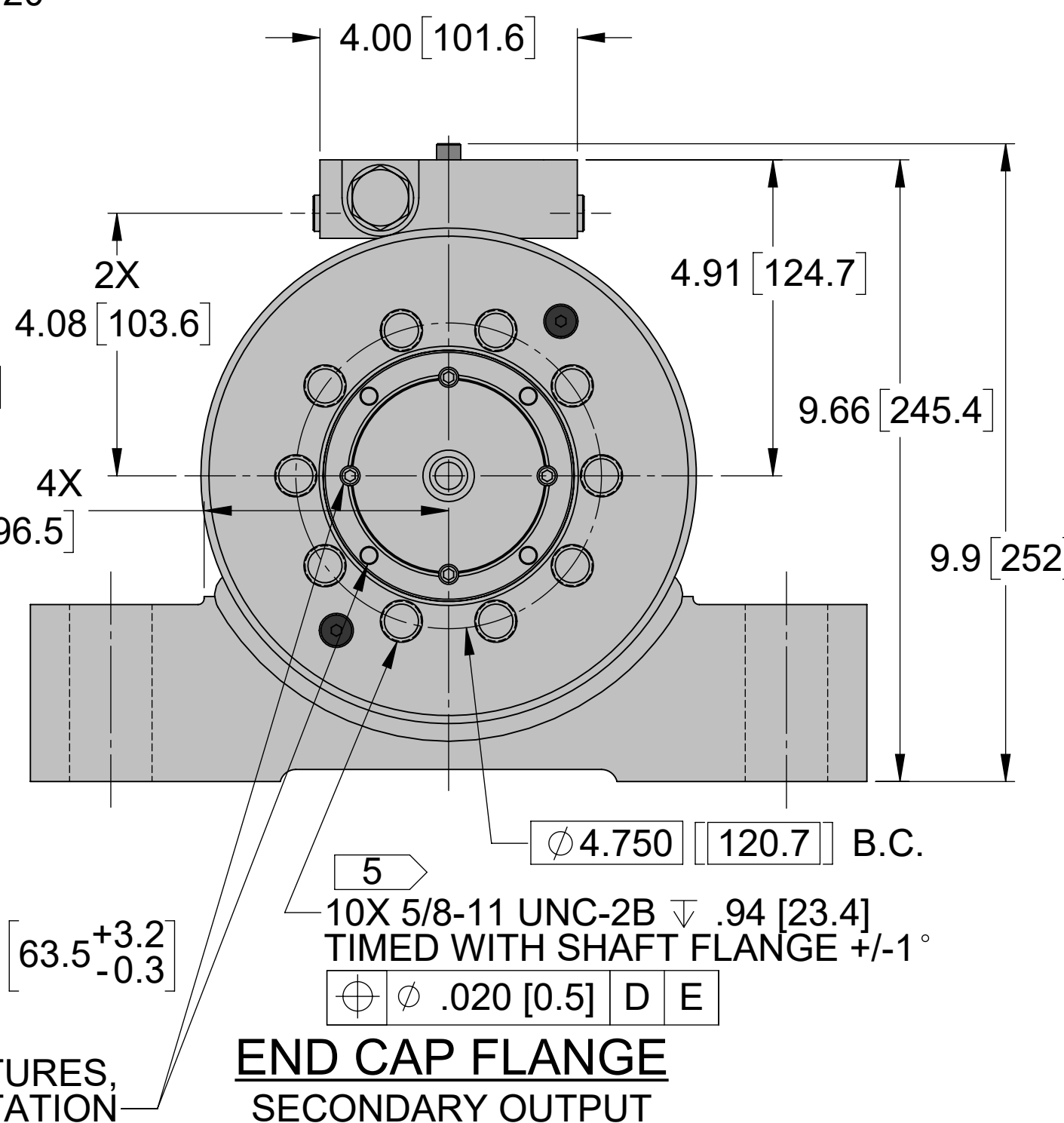
AS PAINTED
COLOR SHOWN FOR REFERENCE ONLY
SCALE 1 : 4



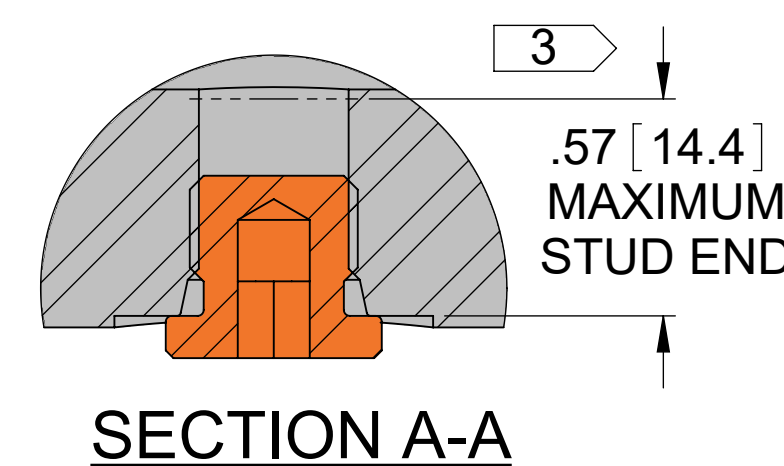
SHAFT FLANGE
PRIMARY OUTPUT



10X ASSEMBLY FEATURES,
RANDOM ORIENTATION



END CAP FLANGE
SECONDARY OUTPUT



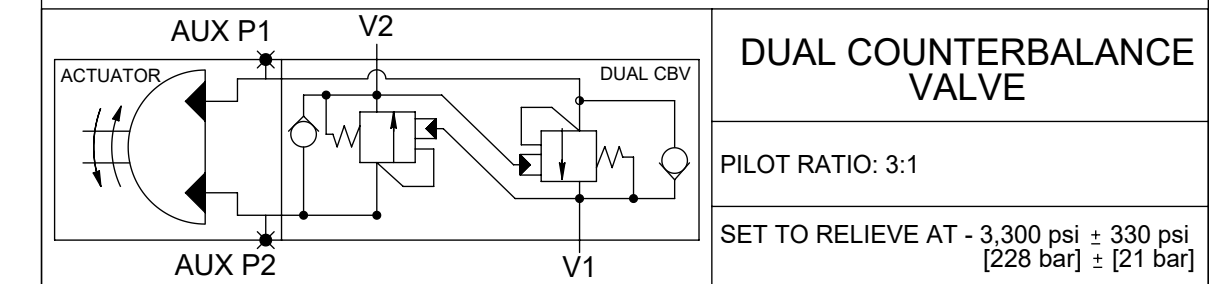
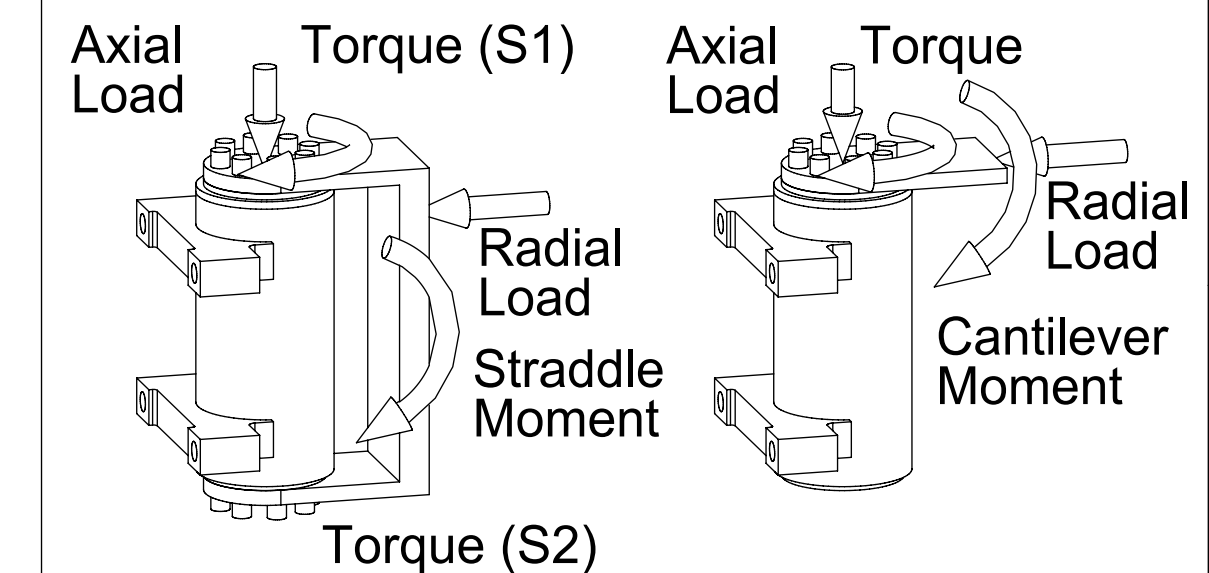
SECTION A-A

NOTES: UNLESS OTHERWISE SPECIFIED

1. THE ACTUATOR IS SHIPPED IN POSITION SHOWN (+/-2°) (SHAFT FLANGE). AS PRESSURE IS APPLIED TO PORT P2, THE SHAFT WILL ROTATE CLOCKWISE. AS PRESSURE IS APPLIED TO PORT P1, THE SHAFT WILL ROTATE COUNTERCLOCKWISE.
2. MAXIMUM BACKLASH IN GEAR SET IS 1°. SEAL MOVEMENT, SEAL COMPRESSION, FLUID COMPRESSION AND END PLAY MAY RESULT IN ADDITIONAL ROTATION.
3. FLUID PORTS CONFORM TO ISO 11926-1 EXCEPT WHERE ACTUATOR HOUSING WALL IS THINNER THAN THREAD DEPTH REQUIREMENT (DIMENSION L4, ISO 11926-1). TO AVOID DAMAGE TO INTERNAL COMPONENTS, FITTING STUD END LENGTHS NOT TO EXCEED DIMENSION SHOWN.
4. MEETS STRUCTURAL AND HYDRAULIC REQUIREMENTS OF ANSI/SIA A92.5-2006 (R2014), EN 280:2013 AND OF ISO 16368-2010.
5. NO PAINT ON INDICATED FEATURE.

REV	DESCRIPTION	REVISIONS	DATE	RESP
E	UPDATE DRAWING TO CURRENT STANDARDS		2020/12/04	MCC

FOOT MOUNT



WARNING

THIS DOCUMENT AND THE INFORMATION IT CONTAINS IS CONFIDENTIAL AND PROPRIETARY TO PARKER-HANNIFIN CORPORATION AND ITS AFFILIATES ("PARKER"), MAY NOT BE COPIED OR DISCLOSED TO OTHERS OR USED FOR ANY PURPOSE OTHER THAN CONDUCTING BUSINESS WITH PARKER, AND MUST BE RETURNED OR DESTROYED AND ALL FURTHER USE DISCONTINUED AT PARKER'S REQUEST.

THE RECIPIENT OF THIS DOCUMENT IS ADVISED THAT IMPROPER SELECTION OR IMPROPER USE OF PARKER SYSTEMS OR COMPONENTS CAN CAUSE DEATH, PERSONAL INJURY AND PROPERTY DAMAGE, AND IS SOLELY RESPONSIBLE THROUGH ITS OWN ANALYSIS AND TESTING FOR THE FINAL SELECTION OF PARKER SYSTEM AND COMPONENTS AND ASSURING THAT ALL PERFORMANCE, ENDURANCE, MAINTENANCE, SAFETY AND WARNING REQUIREMENTS OF THE INTENDED APPLICATION ARE MET.

COPYRIGHT PARKER. YEAR OF COPYRIGHT IS THE YEAR(S) INDICATED ON THIS DOCUMENT. ALL RIGHTS RESERVED.

PERFORMANCE SPECIFICATIONS

DRIVING TORQUE: AT OPERATING PRESSURE, RATED	39,000 in-lb	4407 Nm
HOLDING TORQUE: AT OPERATING PRESSURE, RATED	93,200 in-lb	10532 Nm
MAXIMUM PRIMARY OUTPUT TORQUE	100% OF TOTAL	
MAXIMUM SECONDARY OUTPUT TORQUE	0% OF TOTAL	
OPERATING PRESSURE, RATED	3,000 psi	207 bar
NOMINAL ROTATION	180°	
DISPLACEMENT	(65.7 in ³)	(1077 cm ³)
OPERATING OIL TEMPERATURE	0/+160 °F	-18/+71 °C
DRY WEIGHT	(169 lb)	(76.7 kg)
STRADDLE MOMENT, RATED	280,000 in-lb	31640 Nm
CANTILEVER MOMENT, RATED	140,000 in-lb	15820 Nm
RADIAL LOAD, RATED	21,000 lb	9526 kg
AXIAL LOAD, RATED	3,900 lb	1769 kg

UNLESS OTHERWISE SPECIFIED, DIMENSIONS ARE IN INCHES. METRIC DIMENSIONS ARE FOR REFERENCE ONLY. FORMAT: INCHES [mm]

XXX = ±.010 [0.254]
XX = ±.030 [0.762]
X = ±.060 [1.524]

(X.XXX [X.XXX]) = REFERENCE

√ = μin

DIMENSIONING AND TOLERANCING PER ASME Y14.5-2009

THIRD ANGLE PROJECTION

DO NOT SCALE DRAWING

CUSTOMER REVIEWED

SIGNATURE _____ DATE _____



PHONE (360) 825-1601 FAX (360) 825-1603
www.helac.com

APPROVALS	DATE
DRAWN J. CHANG	2001/03/26
RESP ENG M. KEHLER	2001/03/26
SIMILAR TO 27897	ET # 5962
SCALE: 1 : 2.25	SHEET: 1 of 1

ACTUATOR
CUSTOMER INTERFACE DRAWING
L20-39-E-FT-180-S2-C-H

DRAWING NUMBER
27354

REV.
E