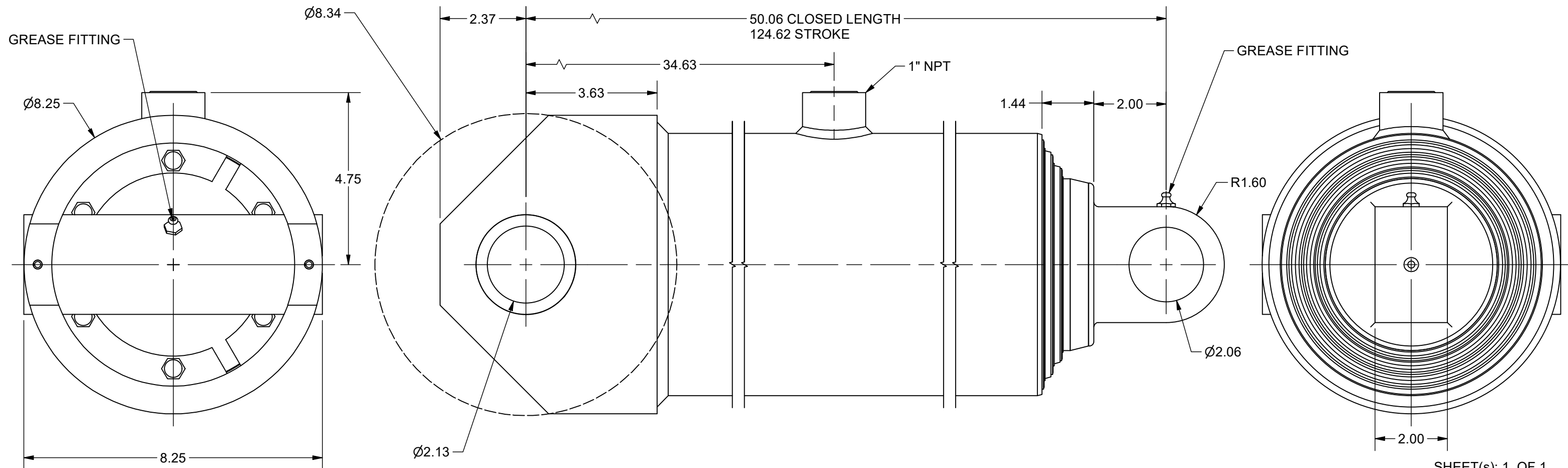
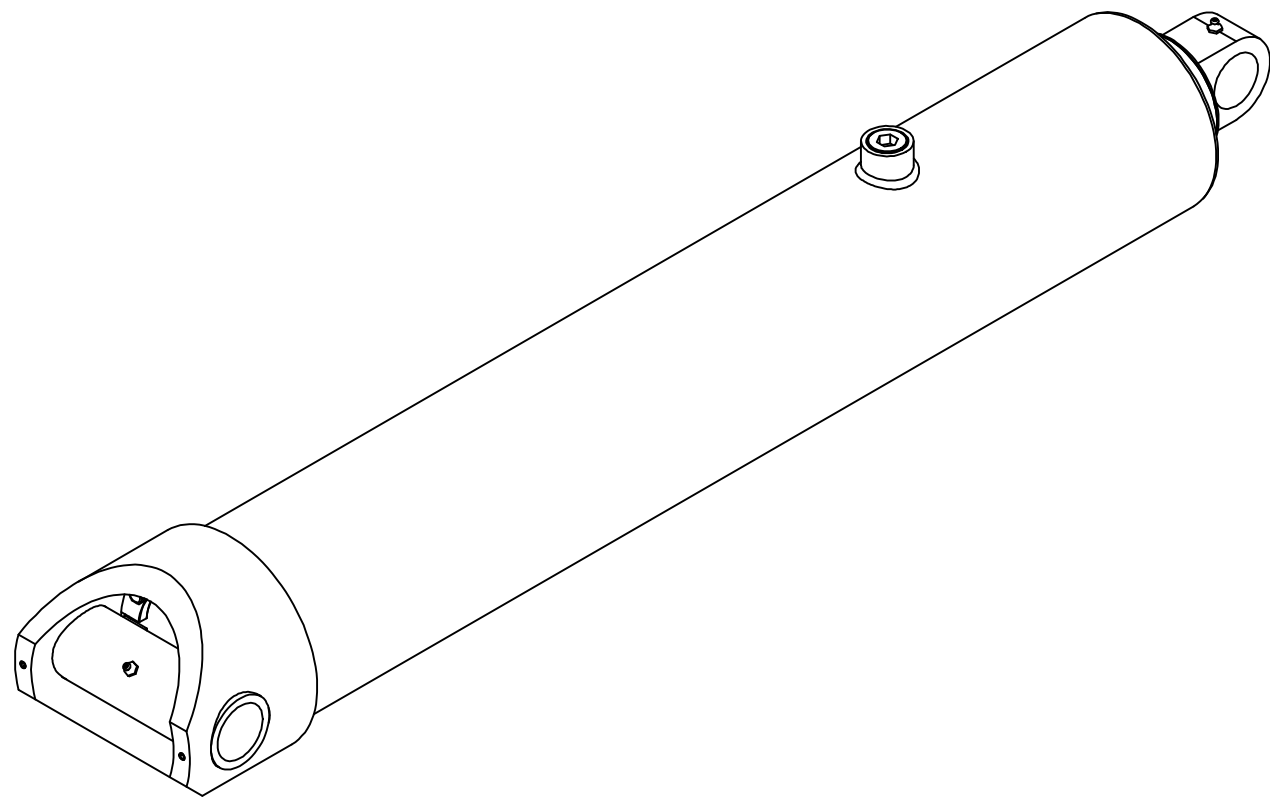


SAT73DC110.00-AAAB-50.06		--	--	MAIN	7.25X6.50	N/A			
ASS'Y ENG. NO.		36.56	3.31	1ST SLEEVE	6.31X5.69	N/A	.79	11.53	0
1HSAT000250039		36.31	3.31	2ND SLEEVE	5.50X4.94	N/A			
PART NUMBER		37.13	2.25	PLUNGER	4.75X4.19	N/A			
		STROKE	O.L.	DESCRIPTION	OD/ID DIM.	ITEM	FILL GAL.	EXT. GAL.	RET. GAL.
REBUILD KIT	3751807004	RING KIT	3751807017	OPERATING PRESSURE	2,500				
1ST SLEEVE	EXTEND FORCE	78,228	RETRACT	0					
2ND SLEEVE	EXTEND FORCE	59,395	RETRACT	0					
PLUNGER	EXTEND FORCE	44,301	RETRACT	0					
MAXIMUM EXTEND FLOW (GPM)		40	MAXIMUM RETRACT FLOW (GPM)						



SHEET(s): 1 OF 1

THIS DOCUMENT CONTAINS INFORMATION THAT IS CONFIDENTIAL AND PROPRIETARY TO PARKER HANNIFIN CORPORATION. THIS DOCUMENT IS FURNISHED ON THE UNDERSTANDING THAT THE DOCUMENT AND THE INFORMATION IT CONTAINS WILL NOT BE COPIED OR DISCLOSED TO OTHERS EXCEPT WITH THE WRITTEN CONSENT OF PARKER HANNIFIN, WILL NOT BE USED FOR ANY PURPOSE OTHER THAN CONDUCTING BUSINESS WITH PARKER HANNIFIN, AND WILL BE RETURNED AND ALL FURTHER USE DISCONTINUED UPON REQUEST BY PARKER HANNIFIN.

(UNLESS OTHERWISE SPECIFIED) TOLS. AND FINISHES PER ES-008. GEOMETRIC TOLS. PER CURRENT ASME Y14.5M STANDARD.  
© COPYRIGHT PARKER. ALL RIGHTS RESERVED. YEAR OF COPYRIGHT IS FIRST YEAR INDICATED ON THIS DOCUMENT.

REV.		ECO-		DATE		MATERIAL		HEAT TREATMENT	
-	0316316	1/16/20				PARKER HANNIFIN CORP.		CYLINDER DIVISION	
SCALE		DATE		DRAWN BY		CHK. BY		APPD. BY	
3:8		6/2/21		RT		RC			

PARKER HANNIFIN CORP.  
CYLINDER DIVISION  
DES PLAINES, IL 60016  
SAT73DC110.00-AAAB-50.06  
SAT 70 SERIES

WEIGHT  
329.14 lbmass  
PART NO.  
1HSAT000250039  
DRAWING NO.  
1HSAT000250039  
REV.  
C

B

Autodesk Inventor