

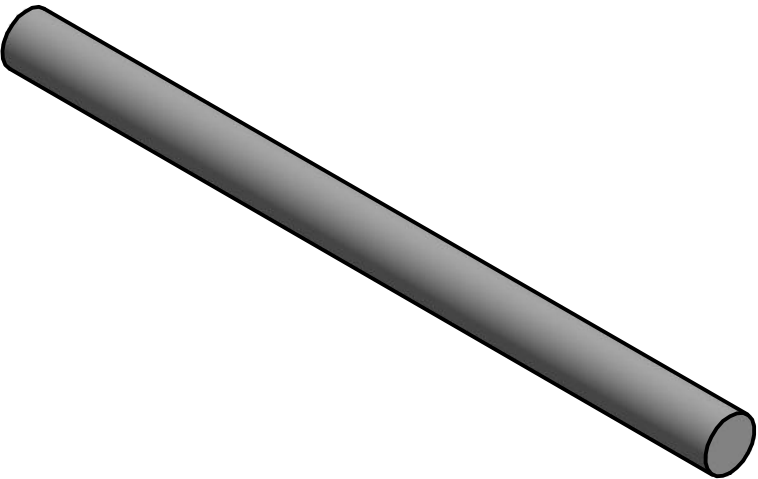
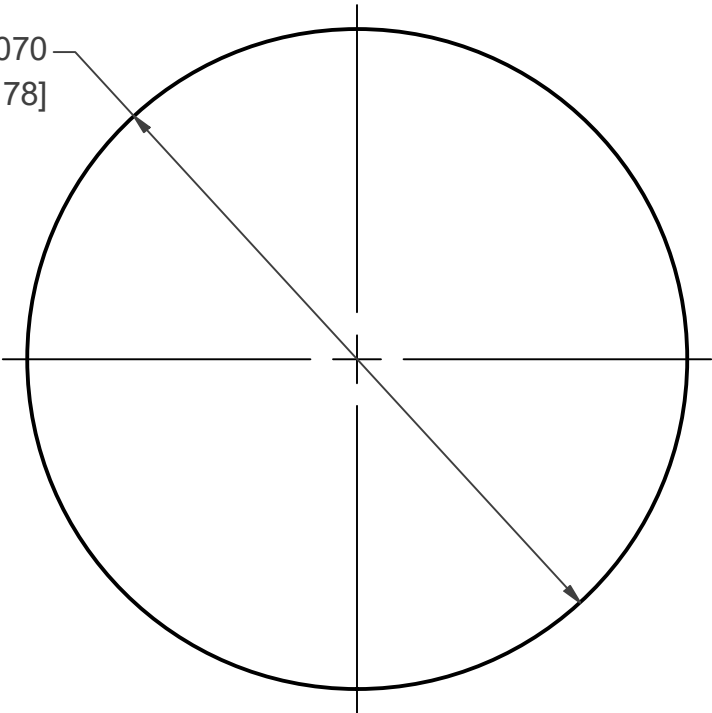
Typical Properties

See Parker Chomerics Conductive Elastomer Engineering Handbook for the latest material information

Seal Material	CHO-SEAL S6305
Filler Material	Nickel-Graphite
Elastomer	Silicone
Durometer	65 (Shore A)
Specific Gravity	2
Tensile Strength	200 psi (1.38 MPa)
Max. Operating Temp	150 °C
Thermal Conductivity	0.8 W/m-K
Noise Shielding Level	100 dB @ 2 GHz
Adhesive Type	None
Length	Sold by the Foot

NOTE: CUSTOM CONFIGURATION CAN BE CREATED BY SPLICING

Ø0.070
[Ø1.78]



THIS DOCUMENT IS NON-CHANGE CONTROLLED AND TO BE USED AS A REFERENCE DOCUMENT FOR INFORMATIONAL PURPOSE ONLY

THIS DOCUMENT AND THE INFORMATION IT CONTAINS IS CONFIDENTIAL AND PROPRIETARY TO PARKER-HANNIFIN CORPORATION AND ITS AFFILIATES ("PARKER"), MAY NOT BE COPIED OR DISCLOSED TO OTHERS OR USED FOR ANY PURPOSE OTHER THAN CONDUCTING BUSINESS WITH PARKER, AND MUST BE RETURNED OR DESTROYED AND ALL FURTHER USE DISCONTINUED AT PARKER'S REQUEST. THE RECIPIENT OF THIS DOCUMENT IS ADVISED THAT IMPROPER SELECTION OR IMPROPER USE OF PARKER SYSTEMS OR COMPONENTS CAN CAUSE DEATH, PERSONAL INJURY AND PROPERTY DAMAGE, AND IS SOLELY RESPONSIBLE THROUGH ITS OWN ANALYSIS AND TESTING FOR THE FINAL SELECTION OF PARKER SYSTEM AND COMPONENTS AND ASSURING THAT ALL PERFORMANCE, ENDURANCE, MAINTENANCE, SAFETY AND WARNING REQUIREMENTS OF THE INTENDED APPLICATION ARE MET. COPYRIGHT PARKER. YEAR OF COPYRIGHT IS THE YEAR(S) INDICATED ON THIS DOCUMENT. ALL RIGHTS RESERVED.

INTERPRET PER ANSI Y14.5 - 1994

UNLESS OTHERWISE SPECIFIED DIMENSIONS ARE IN INCHES [mm]. TOLERANCES ARE:

TOLERANCE SCHEME	
Cross Section	
<0.200 [5.08]	± 0.005 [0.13]
0.200 - 0.349 [5.08 - 8.86]	± 0.008 [0.20]
0.350 - 0.500 [8.89 - 12.70]	± 0.010 [0.25]
>0.500 [12.70]	± 3% Nom. Dim

DO NOT SCALE PRINT

DRAWN

TECHM

CHECKED

BRIAN POOR



PROFILE DESCRIPTION

SOLID O SHAPE # 1687

SIZE	DWG NO	REV
B	10-04-1687-S6305	-

SCALE = NONE	SHEET 1 OF 1
--------------	--------------