

| GENERATOR SIZE | DIMENSION A    | DIMENSION B      | FOOTPRINT LENGTH 'FL' | APPROX. PACKED WEIGHT   | APPROX. PACKED DIMENSIONS (L x W x D)     |
|----------------|----------------|------------------|-----------------------|-------------------------|---|
| N2C-2          | 458<br>[18.03] | 297.5<br>[11.71] | 632<br>[24.88]        | 135.5 Kg<br>(298.7 lbs) | 758 [29.84] x 548 [21.57] x 1215 [47.83]  |
| N2C-4          | 628<br>[27.72] | 466.5<br>[18.37] | 802<br>[31.57]        | 188 Kg<br>(414.5 lbs)   | 808 [31.81] x 548 [21.57] x 1215 [47.83]  |
| N2C-6          | 796<br>[31.34] | 635.5<br>[25.02] | 970<br>[38.19]        | 246 Kg<br>(542.3 lbs)   | 978 [38.50] x 548 [21.57] x 1215 [47.83]  |
| N2C-8          | 965<br>[37.99] | 804.5<br>[31.67] | 1139<br>[44.84]       | 303 Kg<br>(668.0 lbs)   | 1147 [45.16] x 548 [21.57] x 1215 [47.83] |

MAINTENANCE KITS

12 MONTH MAINTENANCE KIT:  
**M12.N2C.0001**

24 MONTH MAINTENANCE KIT (WITH ANALYSER):  
**M24.N2C.0001**

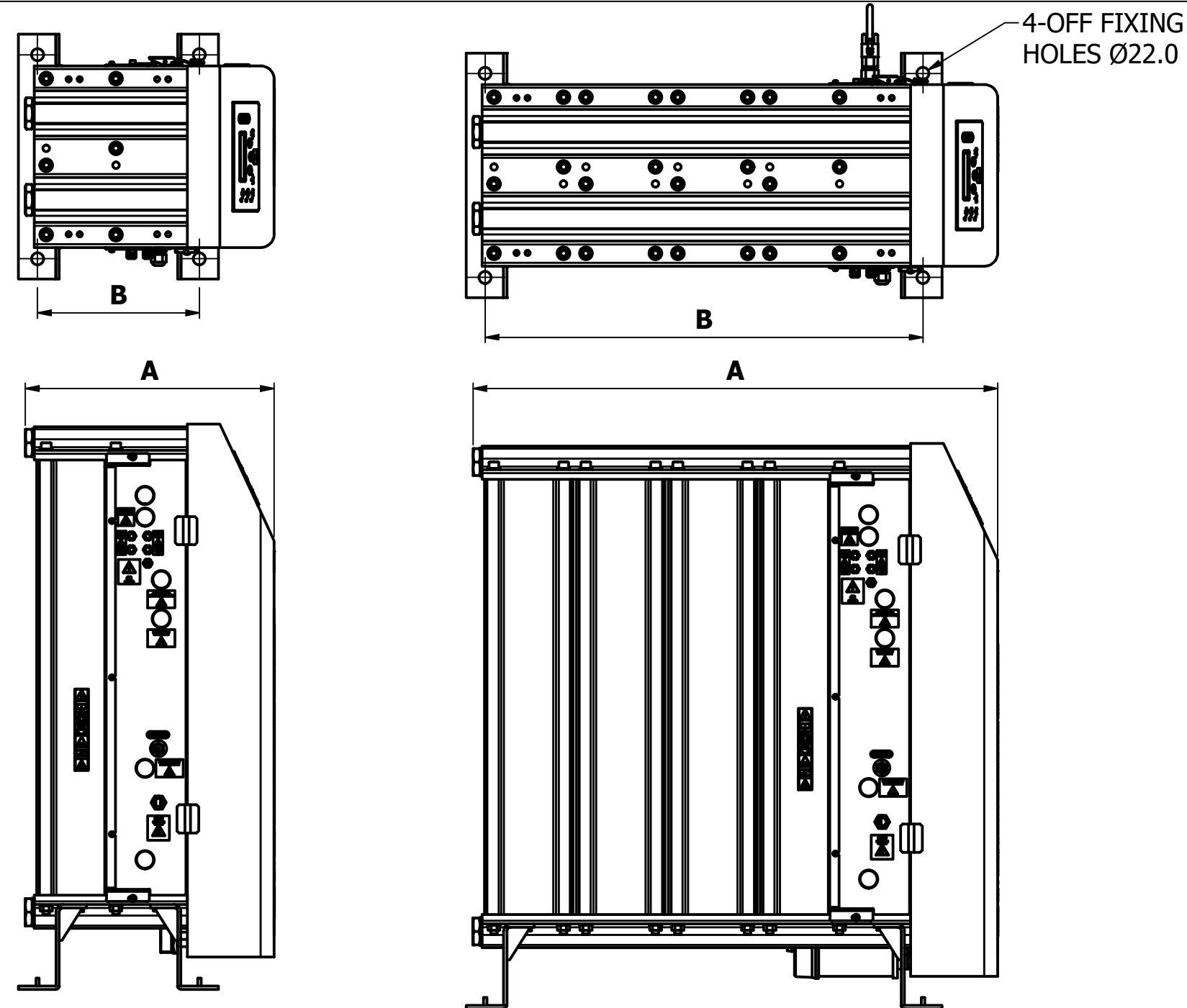
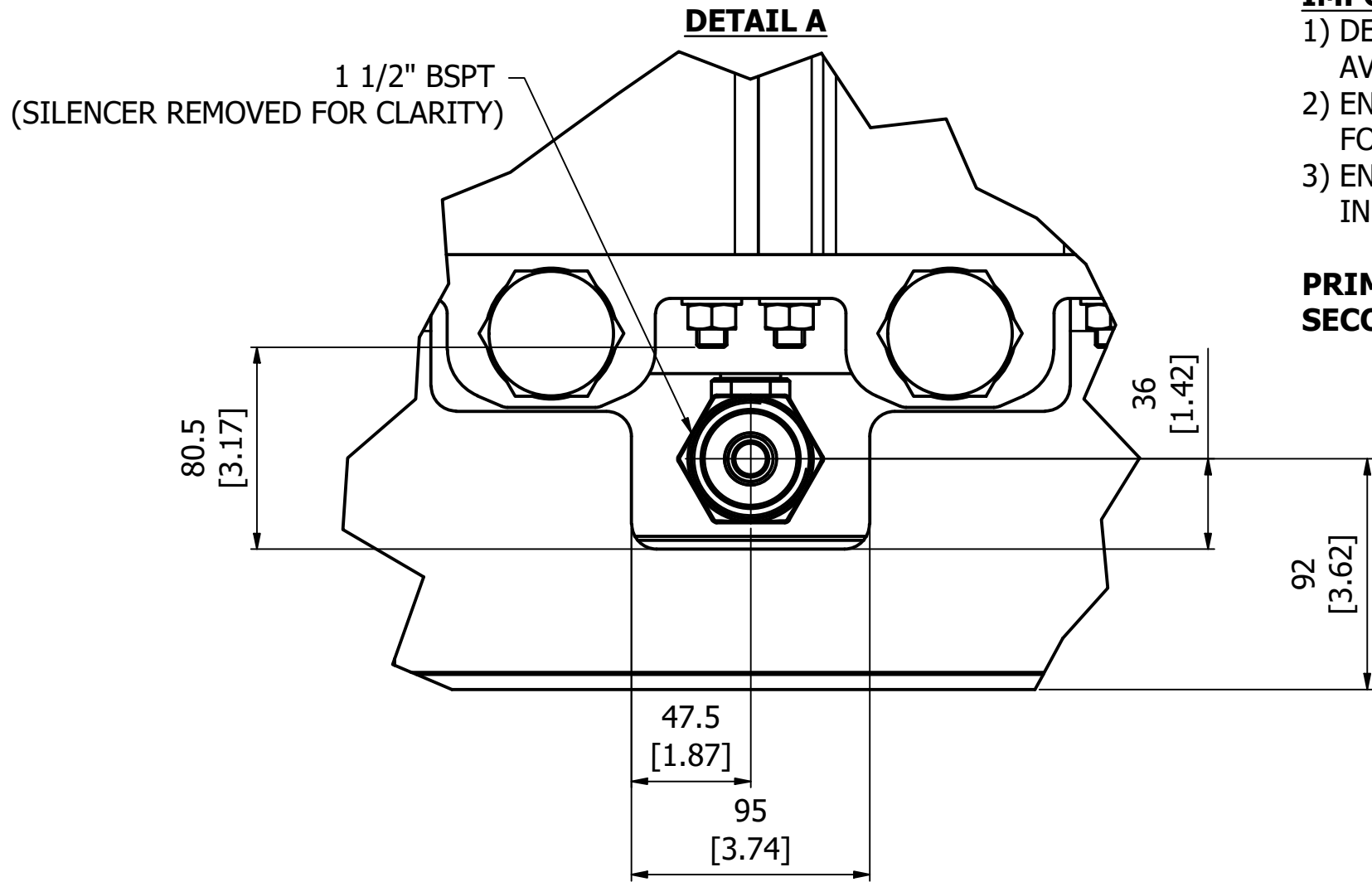
24 MONTH MAINTENANCE KIT (NO ANALYSER):  
**M24.N2C.0002**

IMPORTANT INFORMATION

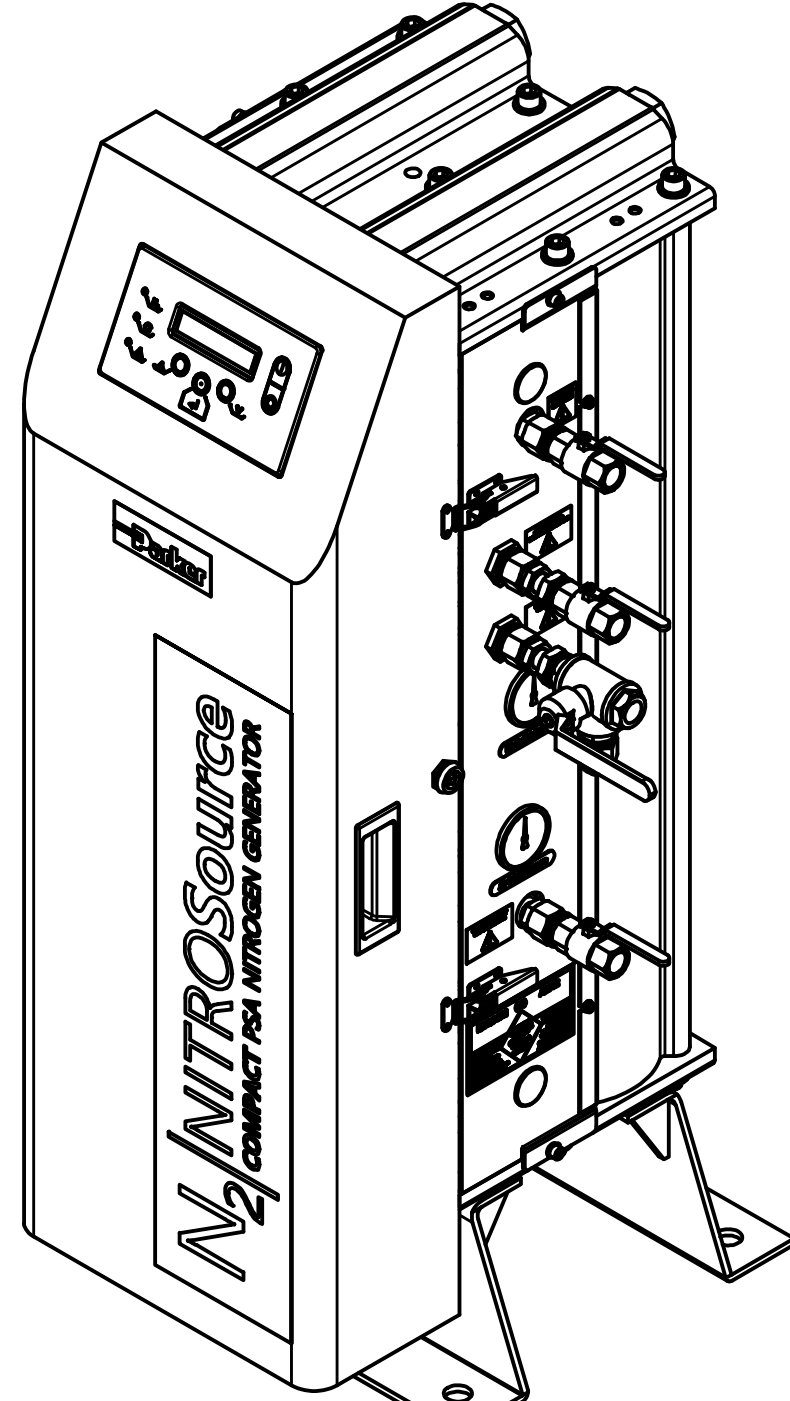
- 1) DETAIL A SHOWS SPACE UNDERNEATH GENERATOR AVAILABLE FOR CUSTOMER TO PIPE AWAY EXHAUST GAS
- 2) ENSURE THAT THE SAME DIAMETER PIPE (DN40) IS USED FOR PIPING EXHAUST GAS AWAY
- 3) ENSURE PIPEWORK IS ROUTED THROUGH THE CUTOUTS IN BOTH FEET AND OUT THROUGH THE REAR OF THE GENERATOR

PRIMARY DIMENSIONS IN mm

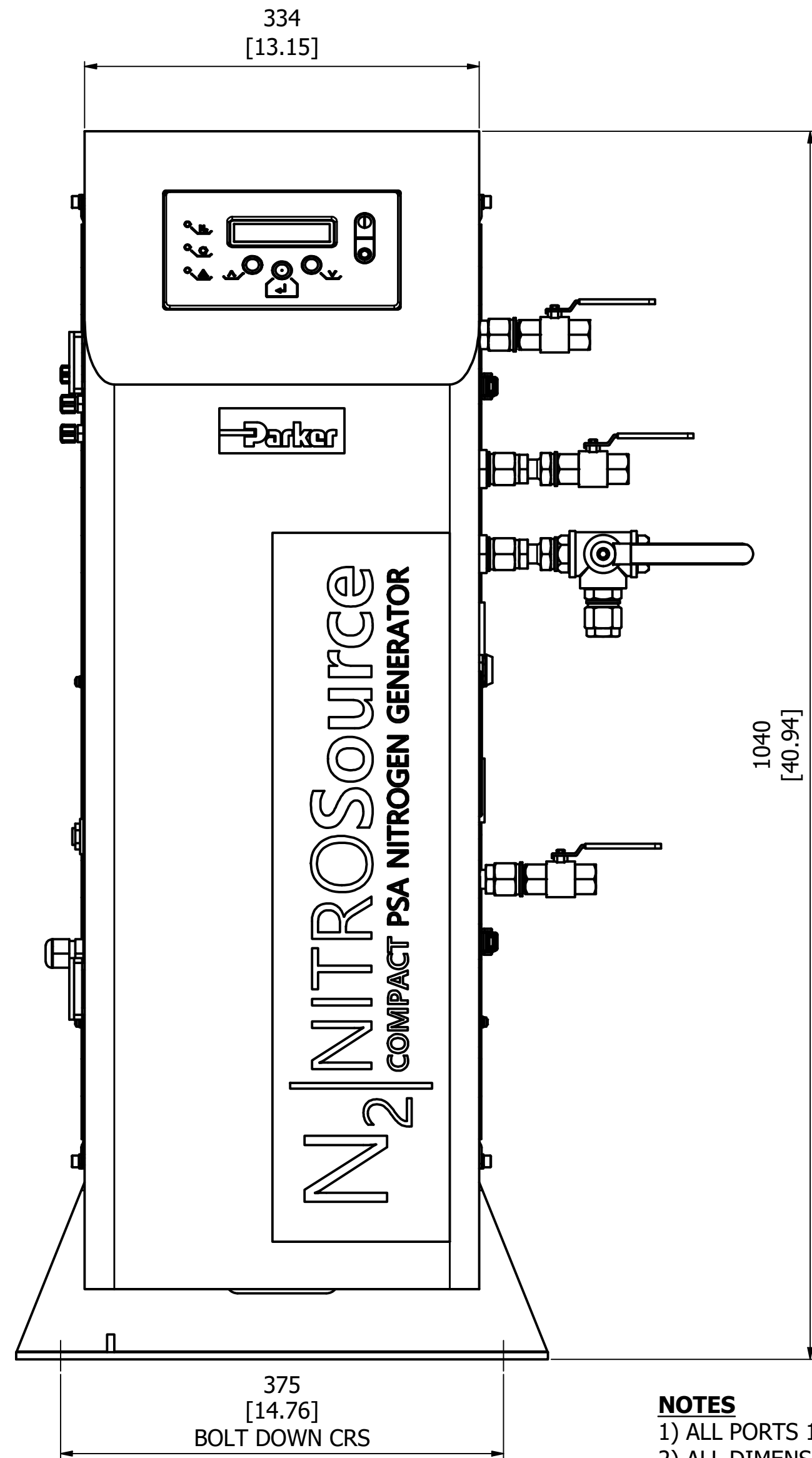
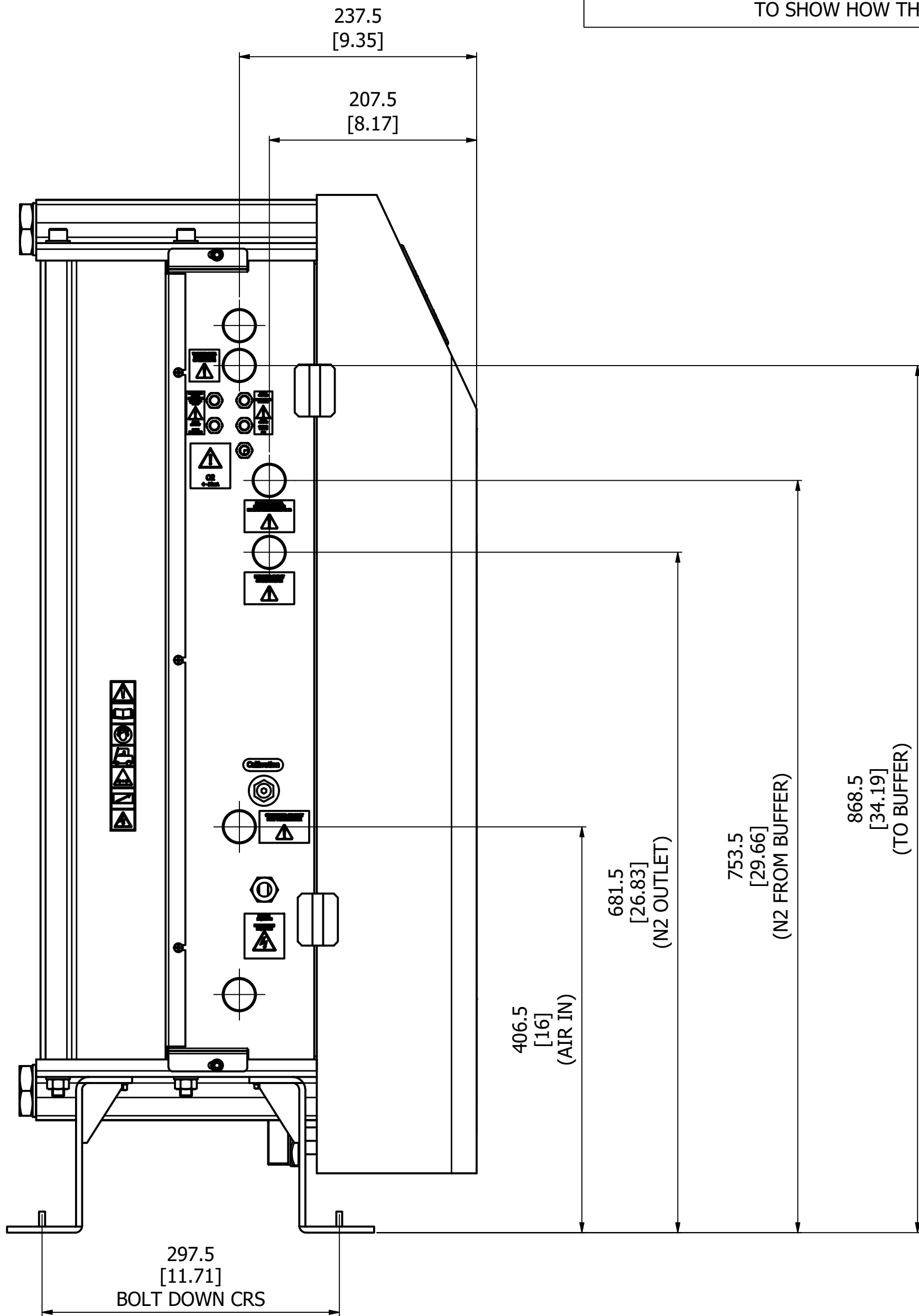
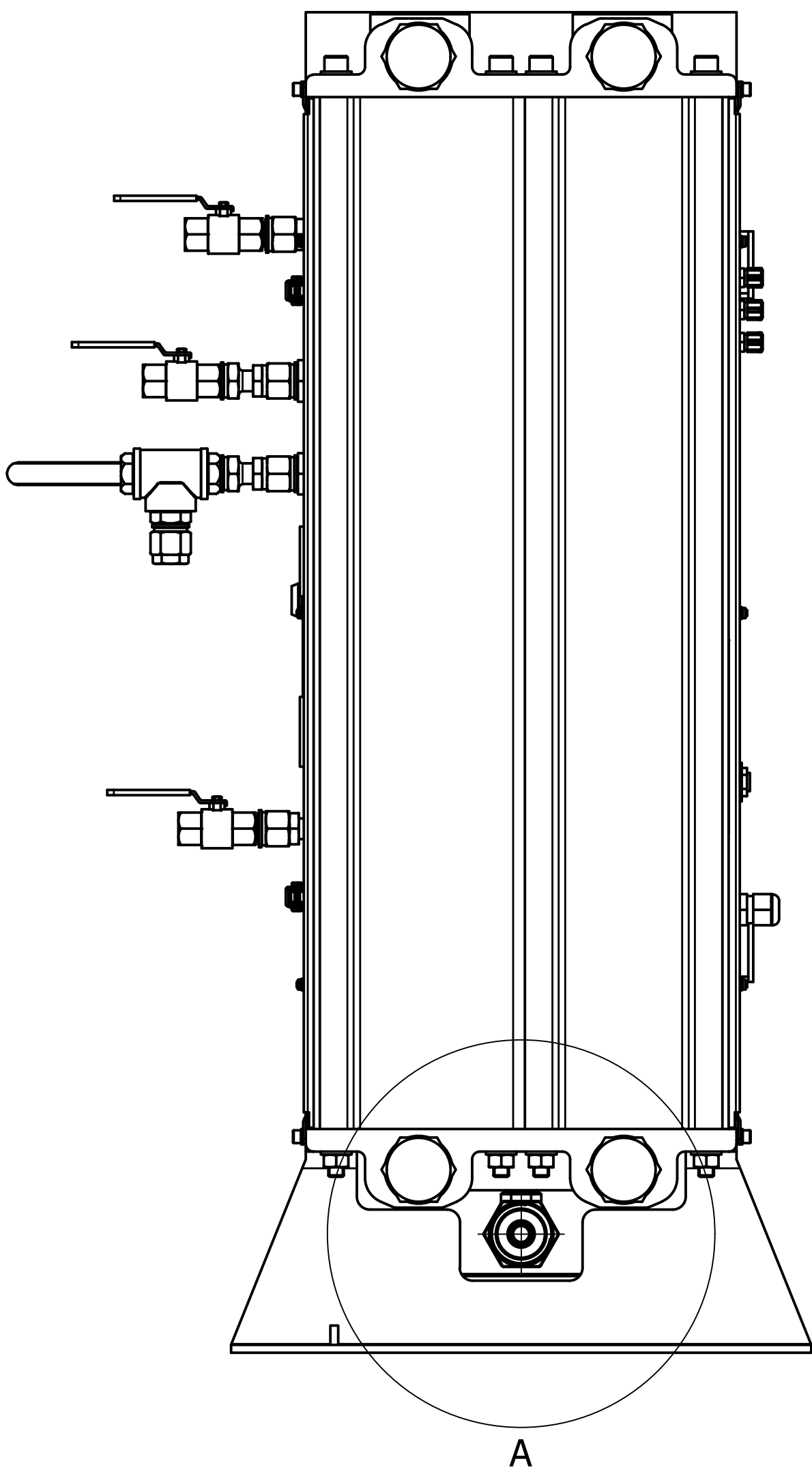
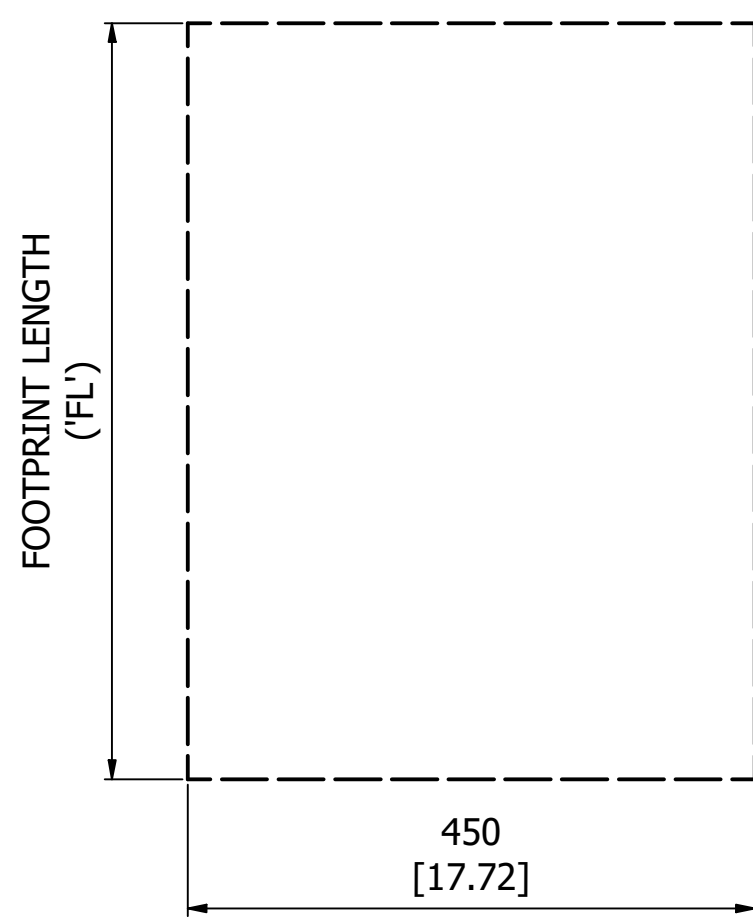
SECONDARY DIMENSIONS [IN BRACKETS] IN INCHES



REPRESENTATION SHOWING THE SMALLEST (N2C-2) AND LARGEST (N2C-8) GENERATORS TO SHOW HOW THE GENERATORS INCREASE IN LENGTH ONLY.



GENERATOR FOOTPRINT



NOTES

- 1) ALL PORTS 1/2" BSPP
- 2) ALL DIMENSIONS IN [ ] ARE IN INCHES

| MATERIAL    | SCALE |  | NAME | DRAWN      | CHECKED    | APPROVED   | TITLE                    |
|-------------|-------|--|------|------------|------------|------------|--------------------------|
| GEN. ARR'T. | 1:4   |  | CL   | 30/09/2019 | DTR        | KW         | N2 COMPACT SALES DRAWING |
|             |       |  | DATE | 30/09/2019 | 30/09/2019 | 30/09/2019 |                          |

|  |                      |
|--|----------------------|
| ECO No. 0305168  | REV -                |
| PLEASE CONSIDER THE ENVIRONMENT PRIOR TO PRINTING THIS DRAWING   |                      |
| DO NOT SCALE - IF IN DOUBT ASK   |                      |
| BASED ON BS 8888 DIMENSIONS IN MILLIMETRES   |                      |
| GENERAL TOLERANCES UNLESS OTHERWISE STATED   |                      |
| MACHINED DIMENSIONS  |                      |
| XX ±0.13   | UP TO 300 ±0.3       |
| X ±0.25  | OVER 300 TO 600 ±0.5 |
| POSITIONAL TOLERANCE   |                      |
| PLAIN HOLES  | Ø0.13                |
| TAPPED HOLES   | Ø0.26                |
| CONCENTRICITY TOLERANCE  | 0.13 TIR             |
| MACHINED SURFACES INDICATED THUS   |                      |
| SURFACE TEXTURE TO BS 1134   |                      |
| VALUES IN MICROMETRES  |                      |
| ANGLES 41/2° (EXCEPT CHAMFERS)   |                      |
| METRIC THREADS TO BS 3643 MED. CLASS   |                      |
| EXTERNAL G   | INTERNAL gH          |
| PIPE THREADS   |                      |
| PRESSURE TIGHT TO BS 21  |                      |
| SHEET METALWORK & FABRICATIONS   |                      |
| SHEET METALWORK DIMENSIONS   |                      |
| UP TO 500  | ±0.5                 |
| OVER 500 TO 1000   | ±1.0                 |
| OVER 1000  | ±1.5                 |
| FABRICATED PARTS DIMENSIONS  |                      |
| UP TO 500  | ±2                   |
| OVER 500 TO 1000   | ±4                   |
| OVER 1000  | ±6                   |
| POSITIONAL TOLERANCE FOR PLAIN & TAPPED HOLES  |                      |
| UP TO 500  | Ø1.0                 |
| OVER 500   | Ø2.0                 |
| <b>Parker</b>   <b>domnick hunter</b>  |                      |
| Parker Hannifin Manufacturing Ltd<br>domnick hunter Filtration & Separation Division<br>Dukesway, Team Valley<br>Gateshead, Tyne & Wear<br>England, NE11 0PZ<br>TEL +44 (0)191 402 9000<br>FAX +44 (0)191 482 6296<br>www.parker.com/dhths |                      |
| THIS DOCUMENT IS COPYRIGHT AND IS THE PROPERTY OF<br>PARKER HANNIFIN LTD. IT MUST NOT BE COPIED IN<br>WHOLE OR PART, USED FOR MANUFACTURE OF, OR<br>OTHERWISE DISCLOSED WITHOUT PRIOR<br>WRITTEN CONSENT OF THE COMPANY                    |                      |
| DRG No.  | SHEET                |
| 101-10615  | 1 / 1                |