



PSD1: Parker Servo Drive

192-011005N1

2015-09

*PSD1 Softmotion / Drive-Interface
Installation Guide*



ENGINEERING **YOUR** SUCCESS.





Windows NT®, Windows 2000™, Windows XP™, Windows Vista, Windows 7 are trademarks of Microsoft Corporation.

EtherCAT® is a registered trademark and a patented technology of Beckhoff Automation GmbH, Germany.

CoDeSys® is a registered trademark of 3S-Smart Software Solutions GmbH.

PROFINET is a registered trademark of Profibus and PROFINET International.

Ethernet/IP is a trademark of Open DeviceNet Vendor Association.

Non-warranty clause

We checked the contents of this publication for compliance with the associated hard and software. We can, however, not exclude discrepancies and do therefore not accept any liability for the exact compliance. The information in this publication is regularly checked, necessary corrections will be part of the subsequent publications.

German Master created.

Production site:



Germany

Parker Hannifin Manufacturing Germany GmbH & Co. KG

Electromechanical Automation Europe [EME]

Robert-Bosch-Strasse 22

77656 Offenburg (Germany)

Tel.: + 49 (0781) 509-0

Fax: + 49 (0781) 509-98176

Internet: www.parker.com/eme <http://www.parker.com/eme>

E-mail: EM-Motion@parker.com <mailto:EM-Motion@parker.com>

Parker Hannifin GmbH - registered office: Bielefeld HRB 35489

Management Board: Ellen Raahede Secher, Dr.-Ing. Hans-Jürgen Haas, Günter Schrank, Kees Veraart - Chairman of the board: Hansgeorg Greuner

Italy:

Parker Hannifin Manufacturing Srl

Electromechanical Automation Europe [EME]

Via C. Gounod, 1

20092 Cinisello Balsamo (Milano), Italy

Tel.: + 39 (0)2 361081

Fax: + 39 (0)2 36108400

Internet: www.parker.com/eme <http://www.parker.com/eme>

E-mail: parker.italy@parker.com <mailto:parker.italy@parker.com>

Location USA:

Parker Hannifin Corporation • Electromechanical Automation

5500 Business Park Drive • Rohnert Park, CA 94928

Phone #: (800) 358-9068 • FAX #: (707) 584-3715

E-mail: CMR_help@parker.com mailto:emn_support@parker.com • Internet:

www.parker.com/emn <http://www.parker.com/emn>



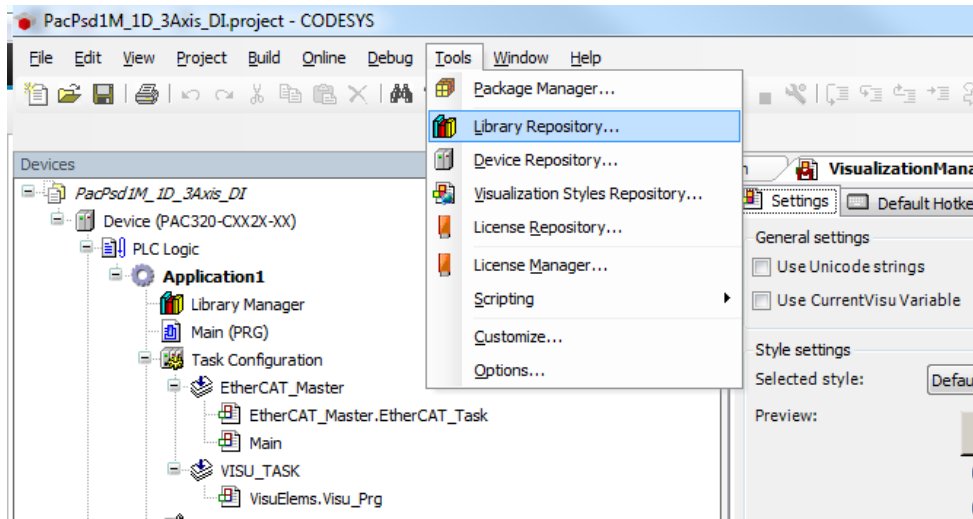
PSD1 Softmotion/Drive-Interface Installation Guide

Please download the files from the PSD Download page:

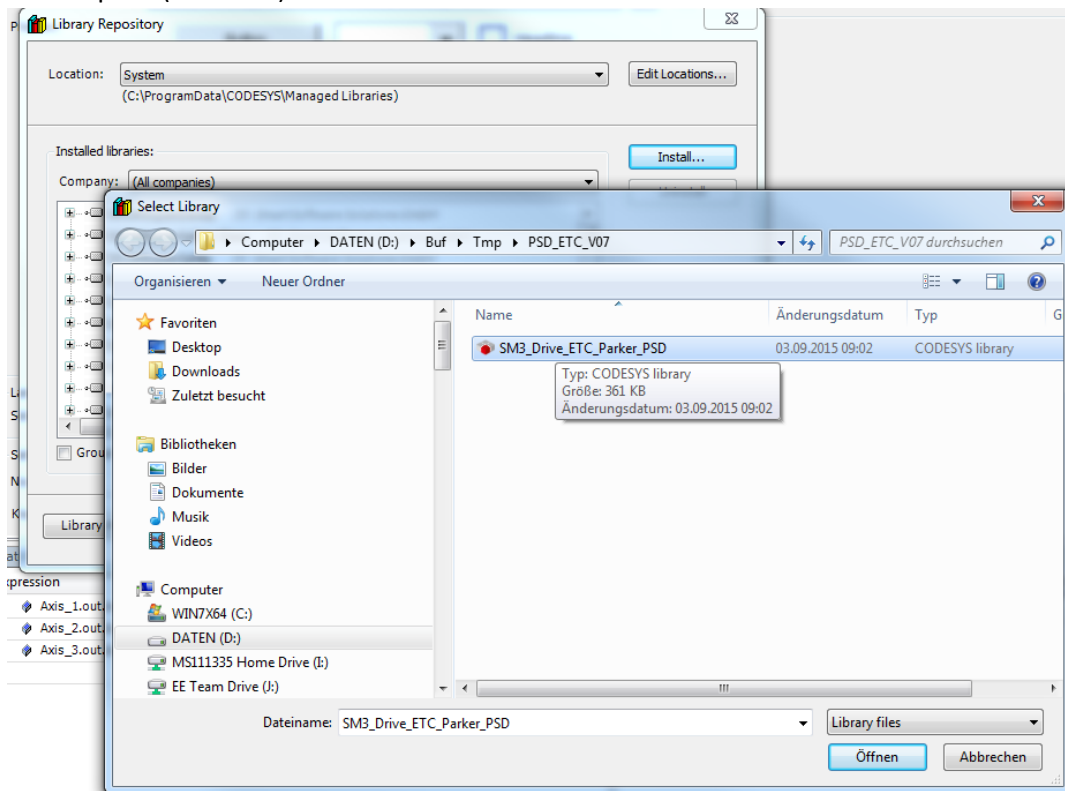
http://solutions.parker.com/psd_support

and open the zip file

1. Copy all files to local folder
2. Run CoDeSys
3. Select: <Tools> <Library Repository>

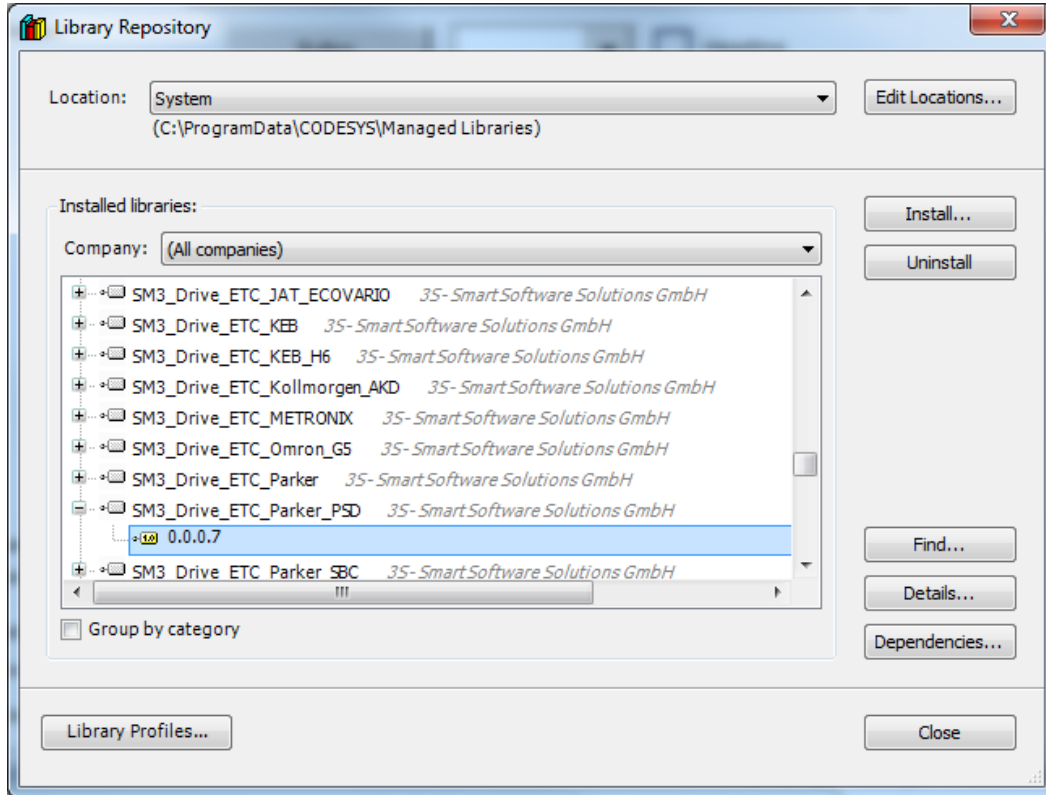


4. Click "Install...", select "SM3_Drive_ETC_Parker_PSD.library" in the used folder and click "Open" ("Öffnen")

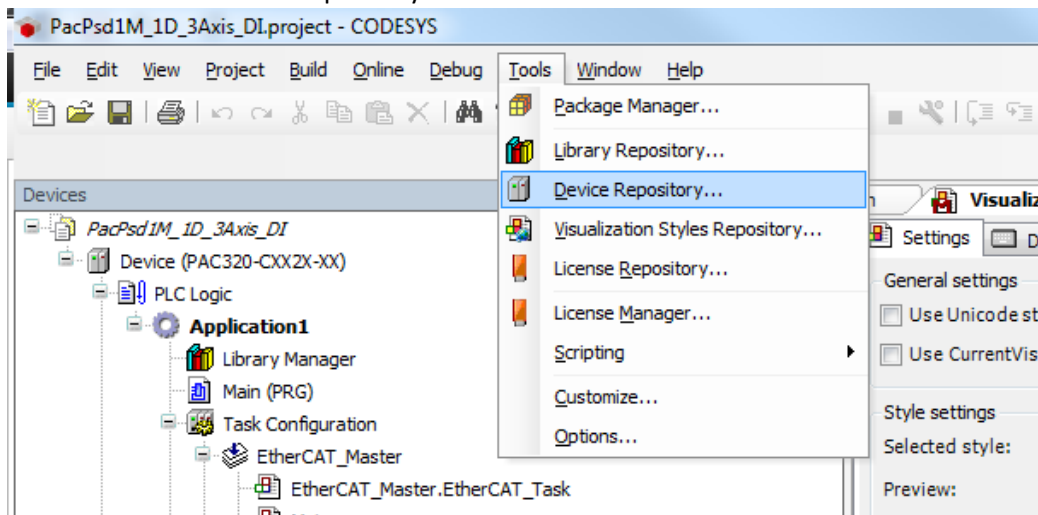




5. Wait till ready, then close this window

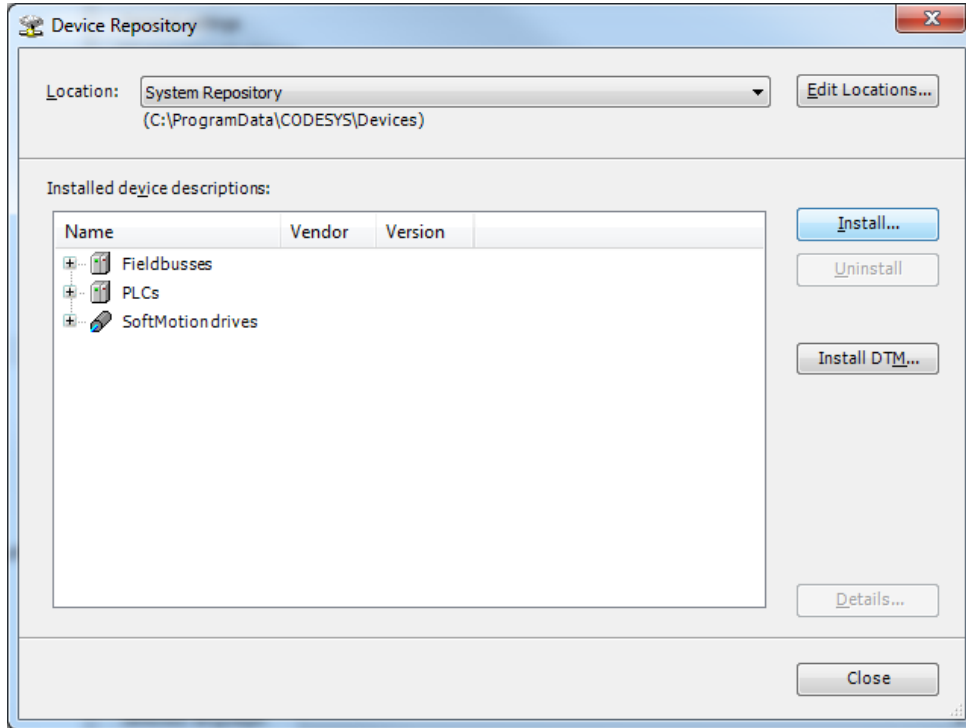


6. Select: <Tools> <Device Repository>

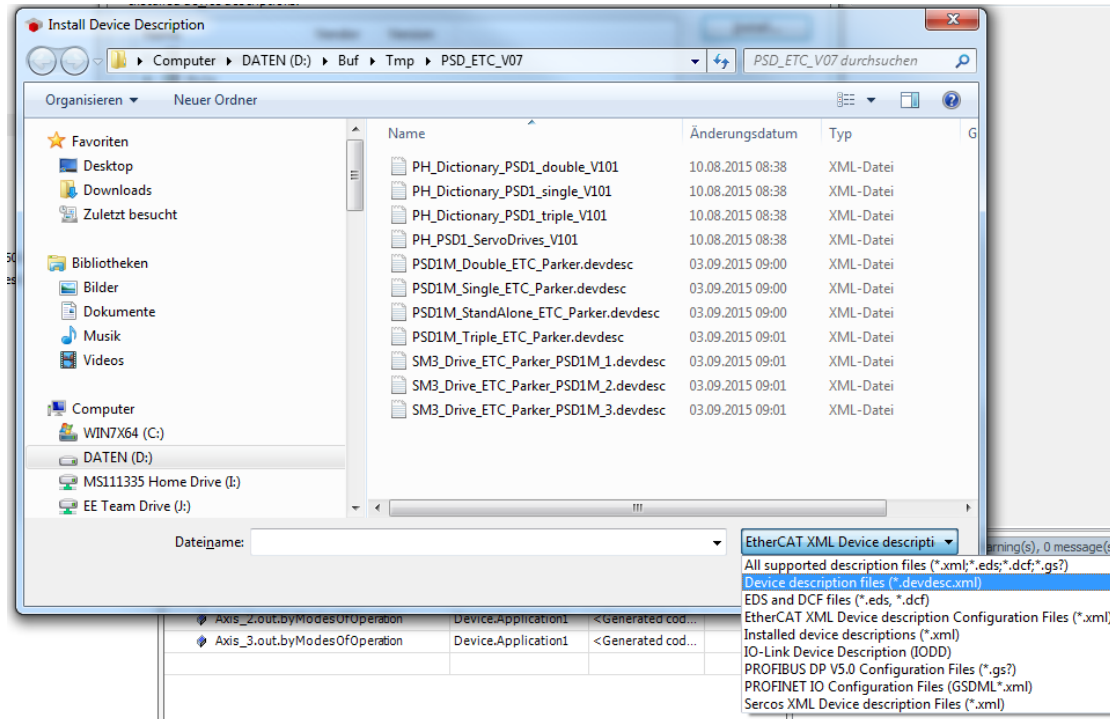




7. Click “Install...”

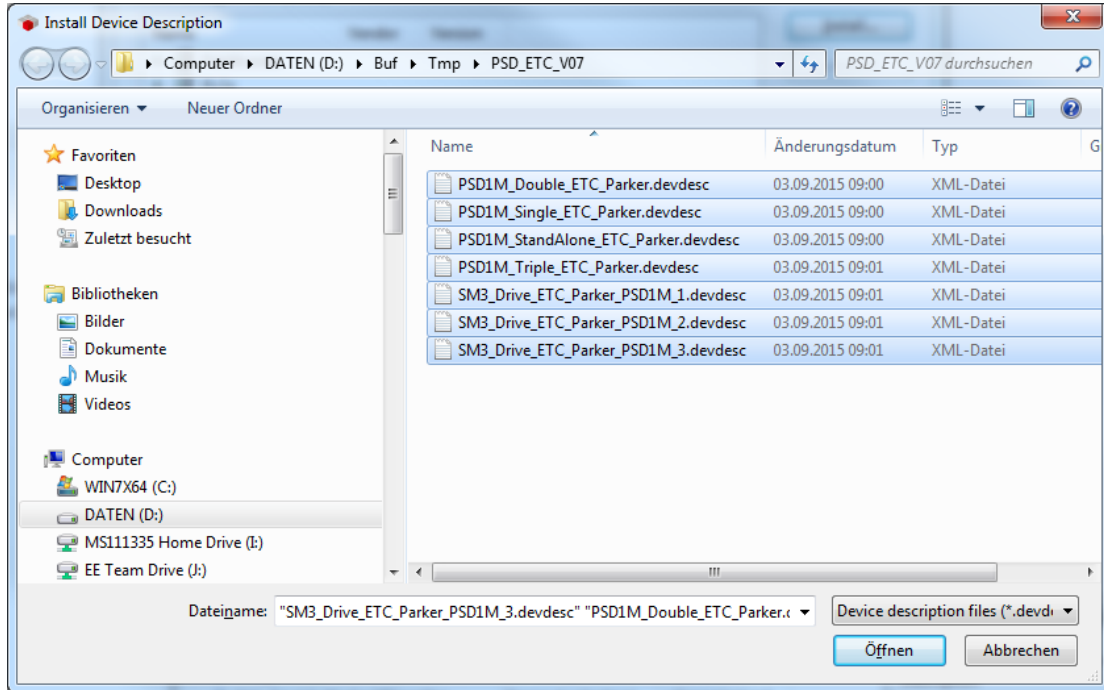


8. Click “Install...” and pre-select “Device description files”





9. Select all remaining files and click "Open" ("Öffnen")



10. Wait till ready, then close this window

