

Specifications:

- Steel body
- Inlet/Outlet Ports: 6.0" and 7.0" Diameter
- Flow rates: 820 - 1900 cfm
- Assembly Lengths: 15.0" - 24.0"
- Assembly Diameters: 9.8" - 13.5"
- Dual air flow direction

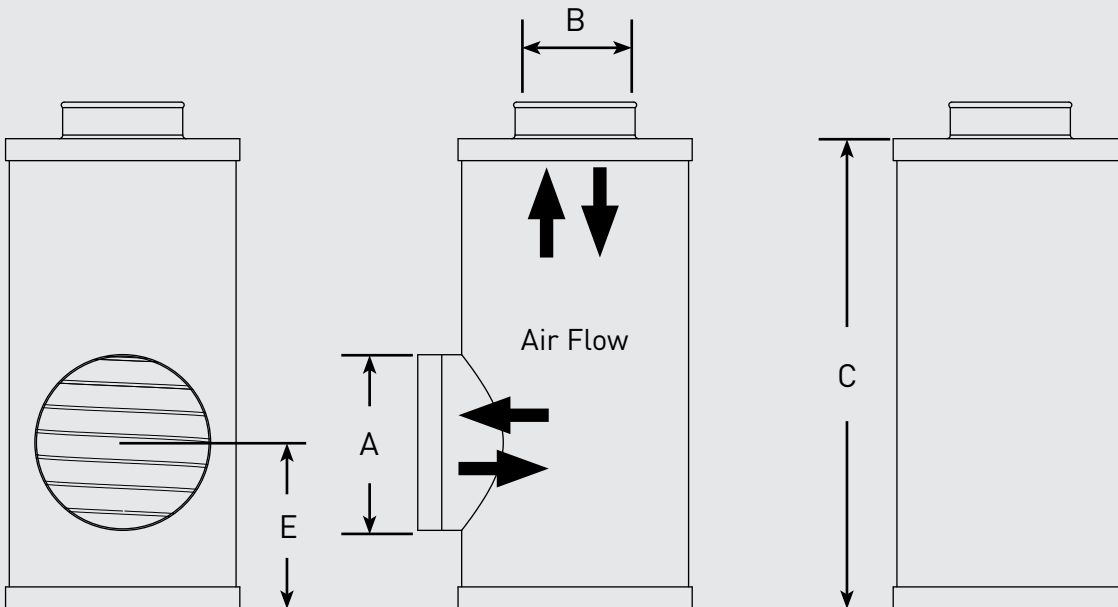
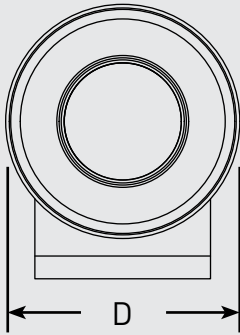
Engine Displacement Formula:

$$CFM = HP \times SA$$

SA = Specific Airflow rating

- 4-Stroke naturally aspirated diesel engine: **SA = 2.0**
- 4-Stroke turbo charged diesel engine: **SA = 2.3**
- 4-Stroke turbo charged after cooled diesel engine: **SA = 2.3**
- 2-Stroke naturally aspirated diesel engine: **SA = 2.0**
- 2-Stroke scavenge blower diesel engine: **SA = 3.3**
- 2-Stroke turbo charged diesel engine: **SA = 3.6**

Dimensions:



SIDE INLET ASSEMBLY	(A) INLET OD IN (CM)	(B) OUTLET ID IN (CM)	(C) LENGTH IN (CM)	(D) DIAMETER IN (CM)	(E) DISTANCE IN (CM)	FLOW RATE CFM	WEIGHT LBS (KG)
062891001	6.0 (15.2)	6.0 (15.2)	24.0 (61.0)	9.8 (24.9)	5.5 (14.0)	820-1200	16.0 (7.3)
062891002	7.0 (17.8)	7.0 (17.8)	24.0 (61.0)	11.0 (27.9)	5.5 (14.0)	1100-1650	19.0 (8.6)
062891003	7.0 (17.8)	7.0 (17.8)	24.0 (61.0)	13.5 (34.3)	5.5 (14.0)	1375-1900	27.0 (12.2)
062891004	7.0 (17.8)	7.0 (17.8)	18.0 (45.7)	13.5 (34.3)	5.5 (14.0)	1070-1590	16.3 (7.4)
062891007	6.0 (15.2)	6.0 (15.2)	24.0 (61.0)	9.8 (24.9)	12.0 (30.5)	820-1200	16.0 (7.3)
062891010	7.0 (17.8)	7.0 (17.8)	15.0 (38.1)	13.5 (34.3)	5.5 (14.0)	1025-1540	15.3 (6.9)
124923000	7.0 (17.8)	7.0 (17.8)	24.0 (61.0)	11.0 (27.9)	18.5 (47.0)	860-940	19.0 (8.6)



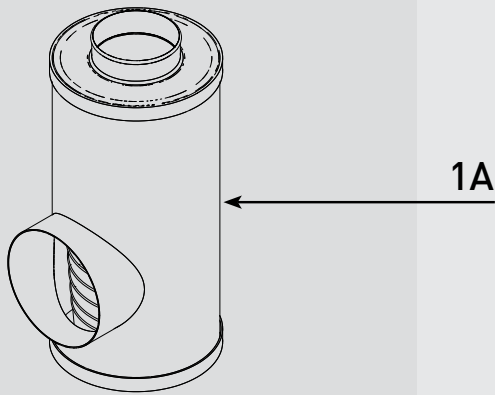
WARNING: The products described in this literature can expose you to chemicals including Diisononyl phthalate, Carbon black extract, which are known to the State of California to cause cancer. For more information go to www.P65Warnings.ca.gov.



PARTS

ECO-LITE Series

1

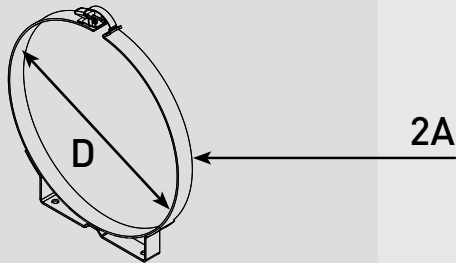


1A

Part #	Description
1A 062891001	Side Inlet - (D) 9.8 in., (L) 24.0 in., (OD) 6.0 in., (ID) 6.0 in., (Inlet Port Location from Base) 5.5 in.
062891002	Side Inlet - (D) 11.0 in., (L) 24.0 in., (OD) 7.0 in., (ID) 7.0 in., (Inlet Port Location from Base) 5.5 in.
062891003	Side Inlet - (D) 13.5 in., (L) 24.0 in., (OD) 7.0 in., (ID) 7.0 in., (Inlet Port Location from Base) 5.5 in.
062891004	Side Inlet - (D) 13.5 in., (L) 18.0 in., (OD) 7.0 in., (ID) 7.0 in., (Inlet Port Location from Base) 5.5 in.
062891007	Side Inlet - (D) 9.8 in., (L) 24.0 in., (OD) 6.0 in., (ID) 6.0 in., (Inlet Port Location from Base) 12.0 in.
062891010	Side Inlet - (D) 13.5 in., (L) 15.0 in., (OD) 7.0 in., (ID) 7.0 in., (Inlet Port Location from Base) 5.5 in.
124923000	Side Inlet - (D) 11.0 in., (L) 24.0 in., (OD) 7.0 in., (ID) 7.0 in., (Inlet Port Location from Base) 18.5 in.

2A 071921001	Mounting Clamp - (D) 9.8 in.
071921002	Mounting Clamp - (D) 11.0 in.
071921003	Mounting Clamp - (D) 13.5 in.

2



2A

Online Link
Disposposable Engine Air Filters Product Selector



RSL0393_CUT_ECO-LITE (07/18 Rev -)

Questions? Email: racortech@parker.com Phone: 800-344-3286 News: www.racornews.com