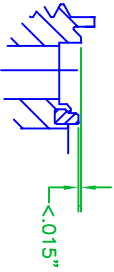
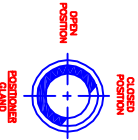
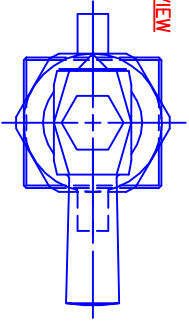


MANUAL, TITAN II, OZ SERIES 1/4 TURN DIAPHRAGM VALVE REPAIR INSTRUCTIONS.

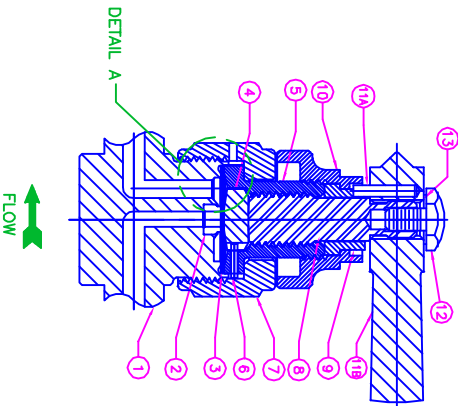
WARNING: THIS PROCEDURE MAY ADVERSELY AFFECT THE CLEANLINESS OF THE VALVE AND SHOULD BE PERFORMED ONLY BY SOMEONE THOROUGHLY FAMILIAR WITH THE VALVES END USE.

- 1- TURN VALVE HANDLE TO "CLOSED" POSITION AND MAKE A MARK ON THE OUTSIDE OF THE VALVE TO REMEMBER HOW TO RE-POSITION THE HANDLE AT "CLOSED" POSITION.
- 2- TURN VALVE HANDLE TO "OPEN" POSITION PRIOR TO DISASSEMBLY OF VALVE. UNSCREW LOCK SCREW(12). REMOVE WASHER(3), LEVER ASSEMBLY(11), POSITIONER LOCK NUT(10) TO REMOVE POS. GLAND(9). REMOVE BONNET(5) AND LEVER ASSEMBLY(11). REMOVE SPRING ASSEMBLY(4, 6 & 8). REMOVE BOWTIE(7) AND OLD DIAPHRAGM ASSY(3). ENSURE THERE IS NO PARTICLE CONTAMINATION INSIDE THE VALVE.
- 3- VISUALLY INSPECT THE SEAT(2). IF ANY CRACK, DISCOLORATION OR CONTAMINATION IS FOUND ON THE SEAT, THEN THE VALVE CAN NOT BE REPAIRED. PLEASE CONTACT THE FACTORY FOR FURTHER ASSISTANCE.
- 4- CAREFULLY MEASURE THE SEAT HEIGHT (DO NOT SCRATCH THE SEAT WHEN MEASURING). IF DISTANCE FROM SEAT TO DIAPHRAGM SEALING SURFACE IS GREATER THAN .015" (SEE DETAIL A), THEN THE VALVE CAN NOT BE REPAIRED. PLEASE CONTACT THE FACTORY FOR FURTHER ASSISTANCE.
- 5- PLACE NEW DIAPHRAGM ASSY(3) INTO VALVE CAVITY WITH DOME UP. MAKE SURE THE ELECTROPOULISHED DIAPHRAGM IS AT THE BOTTOM AND THE SILVER PLATED DIAPHRAGMS ARE IN BETWEEN THE EGILOY DIAPHRAGMS. APPLY A SMALL AMOUNT OF GREASE SUPPLIED WITH THIS KIT ON THE SURFACES OF BOWTIE(4). REINSTALL BOWTIE(4), BONNET, GUIDE PIN & UPPER STEM(5, 6, 4 & 8), AND BONNET NUT(7) ON THE VALVE. MAKE SURE RADUS SIDE OF BOWTIE FACES TOWARD THE DIAPHRAGM AND THE BOTTOM SURFACE OF UPPER STEM IS NOT IN CONTACT WITH BOWTIE. TORQUE BONNET NUT TO 90 LB-FT.
- 6- TORQUE UPPER STEM(6) TO 18 IN-LB TO CLOSE THE VALVE.
- 7- PLACE POSITIONER GLAND(9) AND POSITIONER LOCK NUT(10) ONTO BONNET (REFERENCE ABOVE POSITIONER GLAND SKETCH), THEN FINGER TIGHT POS. LOCK NUT.
- 9- POSITION LEVER ASSEMBLY(11) OVER UPPER STEM IN "CLOSED" POSITION, THEN ROTATE IT SLIGHTLY COUNTER-CLOCKWISE UNTIL IT FITS OVER THE SPLINE, AND PUSH DOWN THE HANDLE.
- 10- ROTATE LEVER TO "OPEN" POSITION (90° CCW FROM "CLOSED" POSITION). LINE UP POSITIONER GLAND SO THAT THE FLAT THAT LIMITS CCW ROTATION IS AGAINST THE STOP PIN, AND WITH THE LEVER IN THE "OPEN" POSITION, TIGHTEN THE POSITIONER LOCK NUT SECURELY WITH A 11/16" OPEN END WRENCH.
- 11- ASSEMBLE LOCK WASHER & LOCK SCREW(13 & 12), THEN TIGHTEN THE LOCK SCREW WITH A 7/16" OPEN END WRENCH.

TOP VIEW



DETAIL A  
SCALE 2:1



ITEM	PART NAME	MATERIAL	QTY
1	VALVE BODY	316L SCS SST	1
2	SEAT INSERT	-	1
3	DIAPHRAGM ASSY	EGILOY/COPPER	1
4	BOWTIE	NITRONIC-60	1
5	BONNET	303 SST	1
6	GUIDE PIN	18-8 SST	1
7	BONNET NUT	303 SST	1
8	UPPER STEM	NITRONIC-60	1
9	POS. LOCK NUT	303 SST	1
10	POS. GLAND	BRASS, CHR. PLTD.	1
11	LEVER ASSY	11A & 11B	1
11A	STOP PIN	HW0 ALUM. ST. PLD.	1
11B	SPLINED LEVER	ALUM., BLACK FIN.	1
12	LOCK SCREW	ALUM., CLEAR FIN.	1
13	LOCK WASHER	SST	1

PART NUMBER 54099227

REV. INITIAL RELEASE E.O.: E.O. 25530

REV.	DESCRIPTION	INCRP BY	DATE

UNLESS OTHERWISE SPECIFIED, DIMENSIONS ARE IN INCHES

FRACTIONS 1/164

TOLERANCES ON DECIMALS .XX = ±.005

ANGLES 1/2

MACH. SURF. FLAT WITHIN .015 X 45°

BREAK SHARP EDGES .015 X 45°

REMOVE ALL BURRS

CONCENTRICITY MACH. SURF.: TR WITHIN 1/2 SUM OF DMS.

OTHER THAN CONDUCTING BUSINESS WITH PARKER, AND WILL BE RETURNED AND ALL FURTHER USE DISCONTINUED UPON REQUEST BY PARKER.

MATERIAL: VERIFLO DIVISION

VERIFLO DIVISION  
250 CANAL BOULEVARD, P.O. BOX 4034  
RICHMOND, CA 94804-0034

DATE: 11/27/01

TITLE: INSTRUCTIONS FOR REPAIR OF TITAN II SERIES 07 (1/4 TURN) DIAPHRAGM VALVES ES-REPAIR-TITAN-07-MANUAL

PART NUMBER: 54099227

SCALE: 1/1

SHEET: 1 OF 1

REV.: