

**Parker Fluid Connectors Group  
North American Divisions & Distribution  
Service Centers**

**North American Divisions**

**Brass Products Division**

Otsego, MI  
phone 269 694 9411  
fax 269 694 4614

**Energy Products Division**

Stafford, TX  
phone 281 566 4500  
fax 281 530 5353

**Hose Products Division**

Wickliffe, OH  
phone 440 943 5700  
fax 440 943 3129

**Industrial Hose Division**

Strongsville, OH  
phone 440 268 2120  
fax 440 268 2230

**Parflex Division**

Ravenna, OH  
phone 330 296 2871  
fax 330 296 8433

**Quick Coupling Division**

Minneapolis, MN  
phone 763 544 7781  
fax 763 544 3418

**Tube Fittings Division**

Columbus, OH  
phone 614 279 7070  
fax 614 279 7685

**Distribution Service Centers**

**Buena Park, CA**

phone 714 522 8840  
fax 714 994 1183

**Conyers, GA**

phone 770 929 0330  
fax 770 929 0230

**Lakeville, MN**

phone 952 469 5000  
fax 952 469 5729

**Louisville, KY**

phone 502 937 1322  
fax 502 937 4180

**Portland, OR**

phone 503 283 1020  
fax 503 283 2201

**Toledo, OH**

phone 419 878 7000  
fax 419 878 7001  
fax 419 878 7420  
(FCG Kit Operations)

For information, call toll free...

**1-800-C-PARKER  
(1-800-272-7537)**



**Port and Conversion Adapters**

Sizes ..... 1/4" through 1-1/2"

Pressures ..... Up to 7700 psi



**Hydraulic Flanges and Components**

Sizes ..... 3/4" through 3"

Pressures ..... Up to 6000 psi



**Tube Fabricating Equipment**

A broad selection of power and manual designs, from Parker's Parflange® flange and flare machines to presetting, bending, cutting/deburring equipment and more.



**Clamps and Tube**

Clamps ..... Full range of inch and metric tube clamps

Metric Tube ..... 6 mm through 42 mm

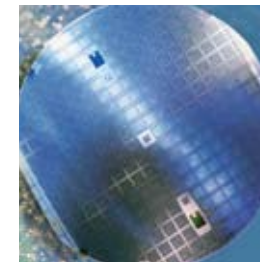


**Custom Products**

Non-cataloged products designed and manufactured in days.



aerospace  
climate control  
electromechanical  
filtration  
fluid & gas handling  
hydraulics  
pneumatics  
process control  
sealing & shielding



**Stainless Steel  
Tube Fittings &  
Equipment**

Quick Reference Guide



© 2009 Parker Hannifin Corporation 4300-QRG-SS 11/2009

Trap-Seal, Robust Port Stud and Seal-Lok are trademarks, and Triple-Lok, Ferulok and Parflange are registered trademarks of Parker Hannifin Corporation.

Parker Hannifin Corporation  
**Tube Fittings Division**  
3885 Gateway Blvd.  
Columbus, OH 43228  
phone 614 279 7070  
fax 614 279 7685  
www.parker.com



ENGINEERING YOUR SUCCESS.



# When you need stainless, Parker means business.



Anytime you need stainless steel tube fittings, adapters and components, it pays to think "Parker" first. Here's why:

- Standard stainless designs are available and will ship in 24 to 48 hours.
- We offer a complete selection of stainless steel SAE/NPT and metric fittings and adapters. We are your global source!
- No other tube fittings manufacturer rivals Parker's U.S. manufacturing capabilities.
- We are the industry's leading source for custom-manufactured designs in all materials especially stainless.
- For stainless steel fittings featuring exclusive innovations like the Trap-Seal™ O-ring, Robust Port Stud™ design and more, Parker is your only source.
- Parker is also your complete source for flaring, bending, flanging and other tube fabricating equipment for achieving fast, leak-free connections.
- Our vast worldwide distributor network, ParkerStores, and immediate 24/7 toll-free or web site assistance are incomparable advantages for you.

So don't think twice when you need stainless. Call your Parker distributor, or **1-800-CPARKER**, and you'll see why we're your best choice in the business.



**Seal-Lok™  
O-Ring Face Seal Tube Fittings**

**Sizes** ..... 1/4" through 2"  
**Pressures** ..... Up to 9200 psi



**Ferulok®  
Flareless Bite Type Fittings**

**Sizes** ..... 1/8" through 2"  
**Pressures** ..... Up to 6000 psi



**Parflange® F37 System  
Non-Welded Tube and Pipe  
SAE Flange System**

**Sizes** ..... Tube O.D. up to 5.5"  
**Pressures** ..... Up to 6000 psi



**Triple-Lok® and Triple-Lok® 2  
37° Flare Tube Fittings and Adapters**

**Triple-Lok Sizes** ..... 1/8" through 2"  
**Triple-Lok 2 Sizes** ..... 1/4" through 2"  
**Pressures** ..... Up to 9000 psi



**E0 and E0-2  
Metric Bite Type Fittings**

**Sizes** ..... 4 mm through 42 mm  
**Pressures** ..... Up to 630 bar/9200 psi



**Pipe Fittings and Pipe Swivels**

**Sizes** ..... 1/8" through 2"  
**Pressures** ..... Up to 5000 psi