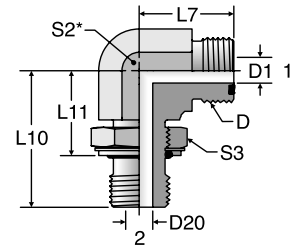


C80MLO

Metric Straight Thread Elbow
ORFS / Metric-ORR



* S2 – Across Hex Flats

TUBE FITTING PART #	END SIZE			D TUBE END UN/UNF-2A	D1 DRILL (mm)	D20 DRILL (mm)	L7 (mm)	L10 (mm)	L11 REF# (mm)	S2 (mm)	S3 HEX (mm)	Dynamic Pressure (x 1,000 PSI)	
	1		2									S	SS
	(mm)	(in.)	ISO 261										
4M12C8OMLO	6	1/4	M12X1.5	9/16 - 18	4.5	4	21.5	33.0	23.2	14	17	3.6	3.6
6M12C8OMLO	8, 10	3/8	M12X1.5	11/16 - 16	6.5	4	25.0	35.5	25.7	17	17	3.6	3.6
6M14C8OMLO	8, 10	3/8	M14X1.5	11/16 - 16	6.5	6	25.0	35.5	25.7	17	19	3.6	3.6
6M16C8OMLO	8, 10	3/8	M16X1.5	11/16 - 16	6.5	7	25.0	37.5	26.4	17	22	3.6	3.6
8M14C8OMLO	12	1/2	M14X1.5	13/16 - 16	9.5	6	28.0	36.0	26.2	19	19	3.6	3.6
8M18C8OMLO	12	1/2	M18X1.5	13/16 - 16	9.5	9	28.0	41.0	28.9	19	24	3.6	3.6
8M22C8OMLO	12	1/2	M22X1.5	13/16 - 16	9.5	12	31.5	49.0	35.5	27	27	3.6	3.6
10M22C8OMLO	14, 15, 16	5/8	M22X1.5	1 - 14	12.5	12	33.5	49.0	35.6	27	27	3.6	3.6
12M27C8OMLO	18, 20	3/4	M27X2	1 3/16 - 20	15.5	15	37.5	55.5	39.3	30	32	3.6	3.6
16M33C8OMLO	22, 25	1	M33X2	1 7/16 - 12	20.5	20	41.5	59.5	43.3	36	41	2.5	2.5
20M38C8OMLO	28, 30, 32	1 1/4	M38X2	1 11/16 - 12	26.0	26	44.5	62.0	45.3	41	46	2.5	2.5
20M42C8OMLO	28, 30, 32	1 1/4	M42X2	1 11/16 - 12	26.0	26	44.5	63.0	46.3	41	50	2.5	2.5

All o-rings and seals are shown in [Section N](#) of this catalog.

Dimensions and pressures for reference only, subject to change.

