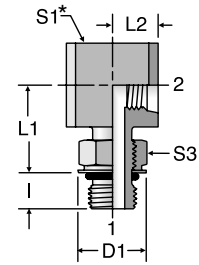


A87LPOEG87LPM

ISO 6149* Female Elbow

Short ISO 6149 / Short ISO 6149



*S1 - Across wrench flats

TUBE FITTING PART #	END SIZE		D1 (mm)	I (mm)	L1 (mm)	L2 (mm)	S1 (mm)	S3 (mm)	Dynamic Pressure (x 1,000 PSI)		
	1 Metric	2 Metric							S	SS	B
	M08A87LPOEG87LPM	M8X1							M8X1	12.5	8.5
M10A87LPOEG87LPM	M10X1	M10X1	14.5	8.5	14.5	7.5	15	14	4.0	4.0	2.6
M12A87LPOEG87LPM	M12X1.5	M12X1.5	17.5	11.0	17.0	10.0	20	17	3.6	3.6	2.3
M14A87LPOEG87LPM	M14X1.5	M14X1.5	19.5	11.0	18.0	10.0	20	19	3.6	3.6	2.3

* Male and female thread lengths have been shortened for compact design. The lengths do not conform to ISO 6149.

Dimensions and pressures for reference only, subject to change.

