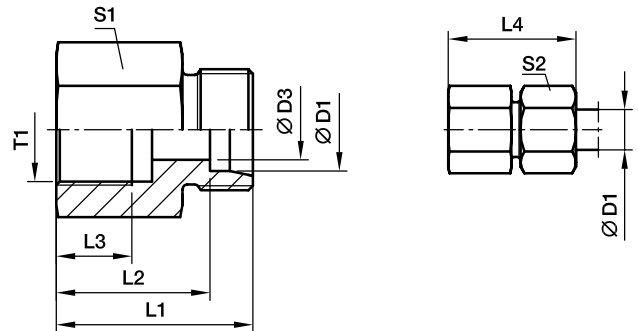


## GAI-M Gerader Aufschraubstutzen

Metr. Innengewinde (ISO 9974-1) / EO 24° Anschluss



| Bau-Reihe       | D1 | T1       | D3 | L1   | L2   | L3   | L4 | S1 | S2 | Gewicht g/1 St. | Bestellzeichen* | PN (bar) <sup>1)</sup> |     |
|-----------------|----|----------|----|------|------|------|----|----|----|-----------------|-----------------|------------------------|-----|
|                 |    |          |    |      |      |      |    |    |    |                 |                 | CF                     | 71  |
| L <sup>3)</sup> | 06 | M 10×1.0 | 4  | 26.5 | 19.5 | 8.0  | 34 | 14 | 14 | 18              | <b>GAI06LM</b>  | 315                    | 315 |
|                 | 08 | M 12×1.5 | 6  | 31.0 | 24.0 | 12.0 | 39 | 17 | 17 | 32              | <b>GAI08LM</b>  | 315                    | 315 |
|                 | 10 | M 14×1.5 | 8  | 32.0 | 25.0 | 12.0 | 40 | 19 | 19 | 39              | <b>GAI10LM</b>  | 315                    | 315 |
|                 | 12 | M 16×1.5 | 10 | 33.0 | 26.0 | 12.0 | 41 | 22 | 22 | 52              | <b>GAI12LM</b>  | 315                    | 315 |
|                 | 15 | M 18×1.5 | 12 | 35.0 | 28.0 | 12.0 | 43 | 24 | 27 | 68              | <b>GAI15LM</b>  | 315                    | 315 |
|                 | 18 | M 22×1.5 | 15 | 37.0 | 29.5 | 14.0 | 46 | 30 | 32 | 111             | <b>GAI18LM</b>  | 315                    | 315 |
|                 | 22 | M 26×1.5 | 19 | 42.0 | 34.5 | 16.0 | 51 | 32 | 36 | 123             | <b>GAI22LM</b>  | 160                    | 160 |
|                 | 28 | M 33×2.0 | 24 | 45.0 | 37.5 | 18.0 | 54 | 41 | 41 | 211             | <b>GAI28LM</b>  | 160                    | 160 |
|                 | 35 | M 42×2.0 | 30 | 51.0 | 40.5 | 20.0 | 62 | 55 | 50 | 459             | <b>GAI35LM</b>  | 160                    | 160 |
|                 | 42 | M 48×2.0 | 36 | 53.0 | 42.0 | 22.0 | 65 | 60 | 60 | 522             | <b>GAI42LM</b>  | 160                    | 160 |
| S <sup>4)</sup> | 06 | M 12×1.5 | 4  | 33.0 | 26.0 | 12.0 | 41 | 17 | 17 | 35              | <b>GAI06SM</b>  | 400                    | 400 |
|                 | 08 | M 14×1.5 | 5  | 33.0 | 26.0 | 12.0 | 41 | 17 | 19 | 42              | <b>GAI08SM</b>  | 400                    | 400 |
|                 | 10 | M 16×1.5 | 7  | 34.0 | 26.5 | 12.0 | 43 | 22 | 22 | 58              | <b>GAI10SM</b>  | 400                    | 400 |
|                 | 12 | M 18×1.5 | 8  | 35.0 | 27.5 | 12.0 | 44 | 24 | 24 | 70              | <b>GAI12SM</b>  | 400                    | 400 |
|                 | 14 | M 20×1.5 | 10 | 39.0 | 31.0 | 14.0 | 49 | 27 | 27 | 95              | <b>GAI14SM</b>  | 400                    | 400 |
|                 | 16 | M 22×1.5 | 12 | 39.0 | 30.5 | 14.0 | 49 | 30 | 30 | 114             | <b>GAI16SM</b>  | 400                    | 400 |
|                 | 20 | M 27×2.0 | 16 | 45.0 | 34.5 | 16.0 | 56 | 36 | 36 | 189             | <b>GAI20SM</b>  | 315                    | 315 |
|                 | 25 | M 33×2.0 | 20 | 49.0 | 37.0 | 18.0 | 61 | 41 | 46 | 235             | <b>GAI25SM</b>  | 315                    | 315 |
|                 | 30 | M 42×2.0 | 25 | 55.0 | 41.5 | 20.0 | 68 | 55 | 50 | 490             | <b>GAI30SM</b>  | 315                    | 315 |
|                 | 38 | M 48×2.0 | 32 | 59.0 | 43.0 | 22.0 | 74 | 60 | 60 | 597             | <b>GAI38SM</b>  | 250                    | 250 |

1) Druckwert genannt = Artikel lieferbar

3) L = Leichte Baureihe; 4) S = Schwere Baureihe

$$\frac{\text{PN (bar)}}{10} = \text{PN (MPa)}$$

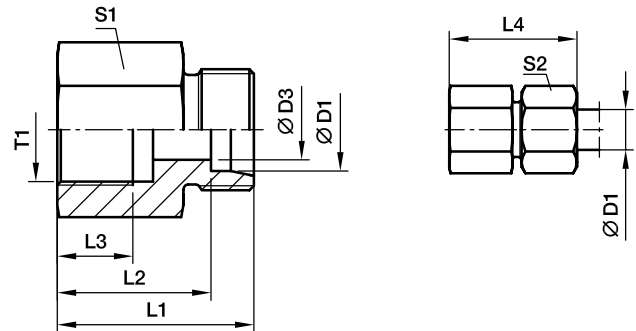
Lieferung ohne Mutter und Schneidring. Hinweise zum Bestellen von Komplettverschraubungen siehe Seite 17.

\*Ergänzen Sie bitte die Bestellzeichen mit den **Kennbuchstaben** für das gewünschte Material.

| Bestellzeichen-Ergänzungen   |  |            |
|------------------------------|--|------------|
| Material                     | Kennbuchstaben Oberfläche und Material | Beispiel   |
| Stahl, verzinkt, Cr(VI)-frei | CFX                                    | GAI16SMCFX |
| Edelstahl                    | 71X                                    | GAI16SM71X |

## GAI-R Gerader Aufschraubstutzen

Zöll. Innengewinde (ISO 1179-1) / EO 24° Anschluss



| Bau-Reihe       | D1              | T1      | D3    | L1   | L2   | L3   | L4   | S1 | S2 | Gewicht<br>g/1 St. | Bestellzeichen*   | PN (bar) <sup>1)</sup> |     |     |
|-----------------|-----------------|---------|-------|------|------|------|------|----|----|--------------------|-------------------|------------------------|-----|-----|
|                 |                 |         |       |      |      |      |      |    |    |                    |                   | CF                     | 71  | MS  |
| L <sup>3)</sup> | 06              | G 1/8   | 4     | 26.0 | 19.0 | 8.0  | 34   | 14 | 14 | 18                 | <b>GAI06LR</b>    | 315                    | 315 | 200 |
|                 | 06              | G 1/4   | 4     | 31.0 | 24.0 | 12.0 | 39   | 19 | 14 | 39                 | <b>GAI06LR1/4</b> | 315                    | 315 | 200 |
|                 | 08              | G 1/4   | 6     | 31.0 | 24.0 | 12.0 | 39   | 19 | 17 | 39                 | <b>GAI08LR</b>    | 315                    | 315 | 200 |
|                 | 08              | G 3/8   | 6     | 32.0 | 25.0 | 12.0 | 40   | 24 | 17 | 61                 | <b>GAI08LR3/8</b> | 315                    | 315 | 200 |
|                 | 08              | G 1/2   | 6     | 36.0 | 29.0 | 14.0 | 44   | 27 | 17 | 80                 | <b>GAI08LR1/2</b> | 315                    | 315 | 200 |
|                 | 10              | G 1/4   | 8     | 32.0 | 25.0 | 12.0 | 40   | 19 | 19 | 40                 | <b>GAI10LR</b>    | 315                    | 315 | 200 |
|                 | 10              | G 3/8   | 8     | 33.0 | 26.0 | 12.0 | 41   | 24 | 19 | 63                 | <b>GAI10LR3/8</b> | 315                    | 315 | 200 |
|                 | 10              | G 1/2   | 8     | 37.0 | 30.0 | 14.0 | 45   | 27 | 19 | 81                 | <b>GAI10LR1/2</b> | 315                    | 315 | 200 |
|                 | 12              | G 3/8   | 10    | 33.0 | 26.0 | 12.0 | 41   | 24 | 22 | 64                 | <b>GAI12LR</b>    | 315                    | 315 | 200 |
|                 | 12              | G 1/2   | 10    | 37.0 | 30.0 | 14.0 | 45   | 27 | 22 | 83                 | <b>GAI12LR1/2</b> | 315                    | 315 | 200 |
|                 | 15              | G 1/2   | 12    | 38.0 | 31.0 | 14.0 | 46   | 27 | 27 | 87                 | <b>GAI15LR</b>    | 315                    | 315 | 200 |
|                 | 18              | G 1/2   | 15    | 38.0 | 30.5 | 14.0 | 47   | 27 | 32 | 89                 | <b>GAI18LR</b>    | 315                    | 315 | 200 |
|                 | 18              | G 3/8   | 15    | 34.0 | 26.5 | 12.0 | 43   | 27 | 32 | 95                 | <b>GAI18LR3/8</b> | 315                    | 315 | 200 |
|                 | 22              | G 3/4   | 19    | 43.0 | 35.5 | 16.0 | 52   | 36 | 36 | 173                | <b>GAI22LR</b>    | 160                    | 160 | 100 |
|                 | 28              | G 1     | 24    | 45.5 | 38.0 | 18.0 | 55   | 41 | 41 | 211                | <b>GAI28LR</b>    | 160                    | 160 | 100 |
|                 | 35              | G 1 1/4 | 30    | 51.5 | 41.0 | 20.0 | 63   | 55 | 50 | 469                | <b>GAI35LR</b>    | 160                    | 160 | 100 |
|                 | 42              | G 1 1/2 | 36    | 53.5 | 42.5 | 22.0 | 65   | 60 | 60 | 540                | <b>GAI42LR</b>    | 160                    | 160 | 100 |
|                 | S <sup>4)</sup> | 06      | G 1/4 | 4    | 33.0 | 26.0 | 12.0 | 41 | 19 | 17                 | 43                | <b>GAI06SR</b>         | 400 | 400 |
| 08              |                 | G 1/4   | 5     | 33.0 | 26.0 | 12.0 | 41   | 19 | 19 | 47                 | <b>GAI08SR</b>    | 400                    | 400 |     |
| 10              |                 | G 3/8   | 7     | 34.0 | 26.5 | 12.0 | 43   | 24 | 22 | 68                 | <b>GAI10SR</b>    | 400                    | 400 |     |
| 12              |                 | G 3/8   | 8     | 34.0 | 26.5 | 12.0 | 43   | 24 | 24 | 71                 | <b>GAI12SR</b>    | 400                    | 400 |     |
| 12              |                 | G 1/2   | 8     | 38.0 | 30.5 | 14.0 | 47   | 30 | 24 | 121                | <b>GAI12SR1/2</b> | 400                    | 400 |     |
| 14              |                 | G 1/2   | 10    | 40.0 | 32.0 | 14.0 | 50   | 30 | 27 | 125                | <b>GAI14SR</b>    | 400                    | 400 |     |
| 16              |                 | G 1/2   | 12    | 40.0 | 31.5 | 14.0 | 50   | 30 | 30 | 126                | <b>GAI16SR</b>    | 400                    | 400 |     |
| 20              |                 | G 3/4   | 16    | 45.0 | 34.5 | 16.0 | 56   | 36 | 36 | 196                | <b>GAI20SR</b>    | 315                    | 315 |     |
| 25              |                 | G 1     | 20    | 49.5 | 37.5 | 18.0 | 62   | 41 | 46 | 246                | <b>GAI25SR</b>    | 315                    | 315 |     |
| 30              |                 | G 1 1/4 | 25    | 55.5 | 42.0 | 22.0 | 69   | 55 | 50 | 537                | <b>GAI30SR</b>    | 315                    | 315 |     |
| 38              |                 | G 1 1/2 | 32    | 59.5 | 43.5 | 22.0 | 74   | 60 | 60 | 649                | <b>GAI38SR</b>    | 250                    | 250 |     |

1) Druckwert genannt = Artikel lieferbar

3) L = Leichte Baureihe; 4) S = Schwere Baureihe

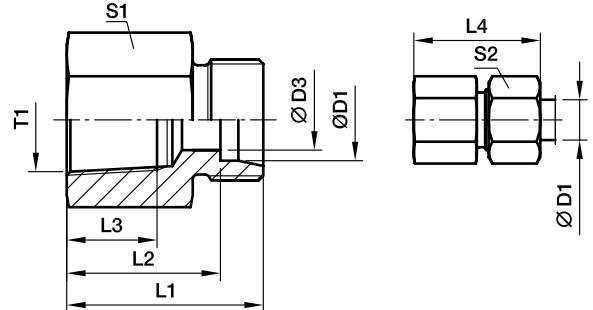
$$\frac{\text{PN (bar)}}{10} = \text{PN (MPa)}$$
**Lieferung ohne Mutter und Schneidring. Hinweise zum Bestellen von Komplettverschraubungen siehe Seite 17.**

 \*Ergänzen Sie bitte die Bestellzeichen mit den **Kennbuchstaben** für das gewünschte Material.

| Bestellzeichen-Ergänzungen   |  |            |
|------------------------------|--|------------|
| Material                     | Kennbuchstaben<br>Oberfläche<br>und Material | Beispiel   |
| Stahl, verzinkt, Cr(VI)-frei | CFX  | GAI16SRCFX |
| Edelstahl                    | 71X  | GAI16SR71X |
| Messing                      | MSX  | GAI16SRMSX |

## GAI-NPT Gerader Aufschraubstutzen

NPT Innengewinde (SAE 476) / EO 24° Anschluss



| Bau-Reihe       | D1 | T1             | D3 | L1   | L2   | L3   | L4 | S1 | S2 | Gewicht g/1 St. | Bestellzeichen*      | PN (bar) <sup>1)</sup> |     |
|-----------------|----|----------------|----|------|------|------|----|----|----|-----------------|----------------------|------------------------|-----|
|                 |    |                |    |      |      |      |    |    |    |                 |                      | CF                     | 71  |
| L <sup>3)</sup> | 06 | 1/8-27 NPT     | 4  | 26.0 | 19.0 | 11.6 | 34 | 14 | 14 | 19              | <b>GAI06L1/8NPT</b>  | 315                    | 315 |
|                 | 06 | 1/4-18 NPT     | 4  | 30.5 | 23.5 | 16.4 | 38 | 19 | 14 | 38              | <b>GAI06L1/4NPT</b>  | 315                    | 315 |
|                 | 08 | 1/4-18 NPT     | 6  | 30.5 | 23.5 | 16.4 | 38 | 19 | 17 | 39              | <b>GAI08L1/4NPT</b>  | 315                    | 315 |
|                 | 10 | 1/4-18 NPT     | 8  | 31.0 | 24.0 | 16.4 | 39 | 19 | 19 | 40              | <b>GAI10L1/4NPT</b>  | 315                    | 315 |
|                 | 12 | 3/8-18 NPT     | 10 | 34.0 | 27.0 | 17.4 | 42 | 24 | 22 | 69              | <b>GAI12L3/8NPT</b>  | 315                    | 315 |
|                 | 12 | 1/2-14 NPT     | 10 | 39.0 | 32.0 | 22.6 | 47 | 27 | 22 | 91              | <b>GAI12L1/2NPT</b>  | 315                    | 315 |
|                 | 15 | 1/2-14 NPT     | 12 | 40.0 | 33.0 | 22.6 | 48 | 27 | 27 | 96              | <b>GAI15L1/2NPT</b>  | 315                    | 315 |
|                 | 18 | 1/2-14 NPT     | 15 | 40.0 | 32.5 | 22.6 | 49 | 27 | 32 | 99              | <b>GAI18L1/2NPT</b>  | 315                    | 315 |
|                 | 22 | 3/4-14 NPT     | 19 | 43.0 | 35.5 | 23.1 | 52 | 36 | 36 | 184             | <b>GAI22L3/4NPT</b>  | 160                    | 160 |
|                 | 28 | 1-11.5 NPT     | 24 | 48.0 | 40.5 | 27.8 | 57 | 41 | 41 | 238             | <b>GAI28L1NPT</b>    | 160                    | 160 |
|                 | 35 | 1 1/4-11.5 NPT | 30 | 51.0 | 40.5 | 28.3 | 62 | 55 | 50 | 424             | <b>GAI35L11/4NPT</b> | 160                    | 160 |
|                 | 42 | 1 1/2-11.5 NPT | 36 | 53.0 | 42.0 | 28.3 | 65 | 60 | 60 | 547             | <b>GAI42L11/2NPT</b> | 160                    | 160 |
| S <sup>4)</sup> | 06 | 1/8-27 NPT     | 4  | 29.0 | 22.0 | 11.6 | 36 | 14 | 17 | 25              | <b>GAI06S1/8NPT</b>  | 400                    | 400 |
|                 | 06 | 1/4-18 NPT     | 4  | 33.0 | 26.0 | 16.4 | 41 | 19 | 17 | 41              | <b>GAI06S1/4NPT</b>  | 400                    | 400 |
|                 | 08 | 1/4-18 NPT     | 5  | 33.0 | 26.0 | 16.4 | 41 | 19 | 19 | 42              | <b>GAI08S1/4NPT</b>  | 400                    | 400 |
|                 | 10 | 3/8-18 NPT     | 7  | 35.0 | 27.0 | 17.4 | 44 | 24 | 22 | 74              | <b>GAI10S3/8NPT</b>  | 400                    | 400 |
|                 | 12 | 1/4-18 NPT     | 8  | 32.5 | 25.0 | 16.4 | 41 | 22 | 24 | 81              | <b>GAI12S1/4NPT</b>  | 400                    | 400 |
|                 | 12 | 3/8-18 NPT     | 8  | 35.0 | 27.5 | 17.4 | 44 | 24 | 24 | 76              | <b>GAI12S3/8NPT</b>  | 400                    | 400 |
|                 | 12 | 1/2-14 NPT     | 8  | 41.0 | 33.5 | 22.6 | 50 | 27 | 24 | 101             | <b>GAI12S1/2NPT</b>  | 400                    | 400 |
|                 | 14 | 1/2-14 NPT     | 10 | 43.0 | 35.0 | 22.6 | 53 | 27 | 27 | 108             | <b>GAI14S1/2NPT</b>  | 400                    | 400 |
|                 | 16 | 1/2-14 NPT     | 12 | 43.0 | 34.5 | 22.6 | 50 | 27 | 30 | 111             | <b>GAI16S1/2NPT</b>  | 400                    | 400 |
|                 | 20 | 1/2-14 NPT     | 16 | 44.0 | 33.5 | 22.6 | 55 | 32 | 36 | 129             | <b>GAI20S1/2NPT</b>  | 315                    | 315 |
|                 | 20 | 3/4-14 NPT     | 16 | 46.0 | 35.5 | 23.1 | 57 | 36 | 36 | 214             | <b>GAI20S3/4NPT</b>  | 315                    | 315 |
|                 | 25 | 1-11.5 NPT     | 20 | 53.0 | 41.0 | 27.8 | 65 | 41 | 46 | 288             | <b>GAI25S1NPT</b>    | 315                    | 315 |
|                 | 30 | 1 1/4-11.5 NPT | 25 | 57.0 | 43.5 | 28.3 | 70 | 55 | 50 | 559             | <b>GAI30S11/4NPT</b> | 315                    | 315 |
|                 | 38 | 1 1/2-11.5 NPT | 32 | 59.0 | 43.0 | 28.3 | 74 | 60 | 60 | 632             | <b>GAI38S11/2NPT</b> | 250                    | 250 |

<sup>1)</sup> Druckwert genannt = Artikel lieferbar

<sup>3)</sup> L = Leichte Baureihe; <sup>4)</sup> S = Schwere Baureihe

$$\frac{\text{PN (bar)}}{10} = \text{PN (MPa)}$$

Lieferung ohne Mutter und Schneidring. Hinweise zum Bestellen von Kompletverschraubungen siehe Seite I7.

\*Ergänzen Sie bitte die Bestellzeichen mit den Kennbuchstaben für das gewünschte Material.

| Bestellzeichen-Ergänzungen   |  |                 |
|------------------------------|--|-----------------|
| Material                     | Kennbuchstaben Oberfläche und Material | Beispiel        |
| Stahl, verzinkt, Cr(VI)-frei | CFX                                    | GAI16S1/2NPTCFX |
| Edelstahl                    | 71X                                    | GAI16S1/2NPT71X |