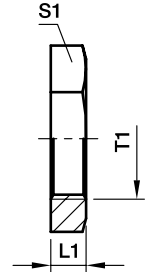


GM Gegenmutter für Schottstutzen

Für Schottverschraubungen SV und WSV

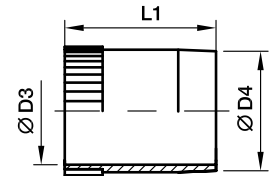


| Reihe | Rohr O.D. | T1 | L1 | S1 | Gewicht g/1 St. | Bestellzeichen | | |
|-----------------|--------------|----------|----|----|--------------------|-----------------|-----------------|-----------------|
| | | | | | | Stahl CF | Edelstahl 71 | Messing MS |
| L ³⁾ | 06 | M 12×1.5 | 6 | 17 | 7 | GM06LCFX | GM06L71X | GM06LMSX |
| | 08 | M 14×1.5 | 6 | 19 | 8 | GM08LCFX | GM08L71X | GM08LMSX |
| | 10 | M 16×1.5 | 6 | 22 | 11 | GM10LCFX | GM10L71X | GM10LMSX |
| | 12 | M 18×1.5 | 6 | 24 | 12 | GM12LCFX | GM12L71X | GM12LMSX |
| | 15 | M 22×1.5 | 7 | 30 | 23 | GM15LCFX | GM15L71X | GM15LMSX |
| | 18 | M 26×1.5 | 8 | 36 | 37 | GM18LCFX | GM18L71X | GM18LMSX |
| | 22 | M 30×2.0 | 8 | 41 | 46 | GM22LCFX | GM22L71X | GM22LMSX |
| | 28 | M 36×2.0 | 9 | 46 | 58 | GM28LCFX | GM28L71X | GM28LMSX |
| | 35 | M 45×2.0 | 9 | 55 | 71 | GM35LCFX | GM35L71X | GM35LMSX |
| | 42 | M 52×2.0 | 10 | 65 | 123 | GM42LCFX | GM42L71X | GM42LMSX |
| S ⁴⁾ | 06 | M 14×1.5 | 6 | 19 | 8 | GM08LCFX | GM08L71X | GM06LMSX |
| | 08 | M 16×1.5 | 6 | 22 | 11 | GM10LCFX | GM10L71X | GM10LMSX |
| | 10 | M 18×1.5 | 6 | 24 | 12 | GM12LCFX | GM12L71X | GM12LMSX |
| | 12 | M 20×1.5 | 6 | 27 | 15 | GM12SCFX | GM12S71X | GM12SMSX |
| | 14 | M 22×1.5 | 7 | 30 | 23 | GM15LCFX | GM15L71X | GM15LMSX |
| | 16 | M 24×1.5 | 7 | 32 | 24 | GM16SCFX | GM16S71X | GM16SMSX |
| | 20 | M 30×2.0 | 8 | 41 | 46 | GM22LCFX | GM22L71X | GM22LMSX |
| | 25 | M 36×2.0 | 9 | 46 | 58 | GM28LCFX | GM28L71X | GM28LMSX |
| | 30 | M 42×2.0 | 9 | 50 | 58 | GM30SCFX | GM30S71X | GM30SMSX |
| | 38 | M 52×2.0 | 10 | 65 | 123 | GM42LCFX | GM42L71X | GM42LMSX |

³⁾ L = Leichte Baureihe: ⁴⁾ S = Schwere Baureihe

VH Verstärkungshülse

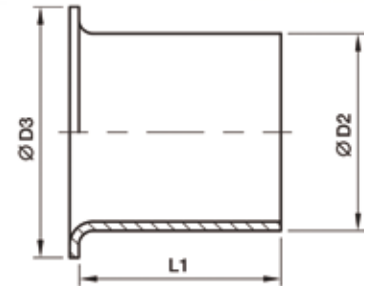
für dünnwandige Metallrohre



| Rohr I.D. | D3 | D4 | L1 | Gewicht g/1 St. | Bestellzeichen | | |
|--------------|------|------|------|--------------------|----------------|-----------------|---------------|
| | | | | | Stahl CF | Edelstahl 71 | Messing MS |
| 4.00 | 2.6 | 3.8 | 14.0 | 0.7 | VH04CFX | VH0471X | VH04MSX |
| 4.50 | 3.1 | 4.3 | 14.0 | 0.8 | VH04.5CFX | VH04.571X | VH04.5MSX |
| 5.00 | 3.6 | 4.8 | 14.0 | 0.8 | VH05CFX | VH0571X | VH05MSX |
| 6.00 | 4.6 | 5.8 | 14.0 | 1.0 | VH06CFX | VH0671X | VH06MSX |
| 6.50 | 5.1 | 6.3 | 14.0 | 1.0 | VH06.5CFX | VH06.571X | VH06.5MSX |
| 7.00 | 5.6 | 6.8 | 15.5 | 1.3 | VH07CFX | VH0771X | VH07MSX |
| 8.00 | 6.6 | 7.8 | 15.5 | 1.6 | VH08CFX | VH0871X | VH08MSX |
| 9.00 | 7.6 | 8.8 | 15.5 | 1.8 | VH09CFX | VH0971X | VH09MSX |
| 10.00 | 8.6 | 9.8 | 15.5 | 2.1 | VH10CFX | VH1071X | VH10MSX |
| 10.05 | 8.6 | 9.8 | 15.5 | 2.1 | VH10.05CFX | VH10.0571X | VH10.05MSX |
| 10.50 | 9.1 | 10.3 | 15.5 | 2.3 | VH10.5CFX | VH10.571X | VH10.5MSX |
| 11.00 | 9.6 | 10.8 | 15.5 | 2.6 | VH11CFX | VH1171X | VH11MSX |
| 12.00 | 10.2 | 11.8 | 17.0 | 3.7 | VH12CFX | VH1271X | VH12MSX |
| 12.95 | 11.2 | 12.8 | 17.0 | 3.9 | VH12.95CFX | VH12.9571X | VH12.95MSX |
| 13.00 | 11.2 | 12.8 | 17.0 | 3.9 | VH13CFX | VH1371X | VH13MSX |
| 14.00 | 12.2 | 13.8 | 17.0 | 4.3 | VH14CFX | VH1471X | VH14MSX |
| 15.00 | 13.2 | 14.8 | 20.0 | 5.7 | VH15CFX | VH1571X | VH15MSX |
| 16.00 | 14.2 | 15.8 | 20.0 | 5.8 | VH16.00CFX | VH16.0071X | VH16.00MSX |
| 16.20 | 14.2 | 15.8 | 20.0 | 5.8 | VH16CFX | VH1671X | VH16MSX |
| 17.00 | 15.2 | 16.8 | 20.0 | 6.3 | VH17CFX | VH1771X | VH17MSX |
| 18.00 | 16.2 | 17.8 | 20.0 | 6.3 | VH18CFX | VH1871X | VH18MSX |
| 19.00 | 17.2 | 18.8 | 16.0 | 5.8 | VH19CFX | VH1971X | VH19MSX |
| 19.90 | 18.2 | 19.8 | 21.5 | 7.9 | VH19.90CFX | VH19.9071X | VH19.90MSX |
| 20.00 | 18.2 | 19.8 | 21.5 | 7.9 | VH20CFX | VH2071X | VH20MSX |
| 21.00 | 19.2 | 20.8 | 21.5 | 8.0 | VH21CFX | VH2171X | VH21MSX |
| 22.00 | 20.2 | 21.8 | 23.5 | 9.7 | VH22CFX | VH2271X | VH22MSX |
| 23.00 | 21.2 | 22.8 | 23.5 | 10.6 | VH23CFX | VH2371X | VH23MSX |
| 24.00 | 22.2 | 23.8 | 23.5 | 11.1 | VH24CFX | VH2471X | VH24MSX |
| 24.90 | 23.3 | 24.8 | 23.5 | 10.8 | VH24.90CFX | VH24.9071X | VH2490MSX |
| 25.00 | 23.2 | 24.8 | 23.5 | 10.8 | VH25CFX | VH2571X | VH25MSX |
| 26.00 | 24.2 | 25.8 | 23.5 | 12.7 | VH26CFX | VH2671X | VH26MSX |
| 27.00 | 25.2 | 26.8 | 23.5 | 12.2 | VH27CFX | VH2771X | VH27MSX |
| 30.00 | 27.8 | 29.8 | 26.5 | 18.7 | VH30CFX | VH3071X | VH30MSX |
| 31.00 | 28.8 | 30.8 | 26.5 | 20.7 | VH31CFX | VH3171X | VH31MSX |
| 32.00 | 29.8 | 31.8 | 26.5 | 19.2 | VH32CFX | VH3271X | VH32MSX |
| 32.10 | 29.8 | 31.8 | 26.5 | 19.2 | VH32.10CFX | VH32.1071X | VH32.10MSX |
| 33.00 | 30.8 | 32.8 | 26.5 | 19.9 | VH33CFX | VH3371X | VH33MSX |
| 34.00 | 31.8 | 33.8 | 26.5 | 26.5 | VH34CFX | VH3471X | VH34MSX |
| 37.80 | 35.8 | 37.7 | 31.0 | 19.5 | VH37.8CFX | VH37.871X | VH37.8MSX |
| 38.00 | 35.8 | 37.8 | 21.0 | 19.7 | VH38CFX | VH3871X | VH38MSX |
| 39.00 | 36.8 | 38.8 | 21.0 | 19.5 | VH39CFX | VH3971X | VH39MSX |

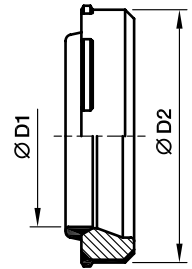
E Einsteckhülse

für Kunststoffrohr



| Rohr A.D. | Rohr I.D. | D2 | D3 | L1 | Gewicht g/1 St. | Bestellzeichen Messing |
|-----------|-----------|------|------|----|-----------------|---------------------------|
| 04 | 2.0 | 2.0 | 3.5 | 8 | 1 | E04/02X |
| 04 | 2.5 | 2.5 | 4.0 | 8 | 1 | E04/2.5X |
| 05 | 3.0 | 3.0 | 5.0 | 14 | 1 | E0506/03X |
| 06 | 3.0 | 3.0 | 5.0 | 14 | 1 | E0506/03X |
| 05 | 4.0 | 4.0 | 5.0 | 14 | 1 | E0506/04X |
| 06 | 4.0 | 4.0 | 5.0 | 14 | 1 | E0506/04X |
| 08 | 4.0 | 4.0 | 6.6 | 14 | 1 | E08/04X |
| 06 | 5.0 | 5.0 | 6.0 | 14 | 1 | E06/05X |
| 08 | 5.0 | 5.0 | 6.0 | 14 | 1 | E08/05X |
| 10 | 6.0 | 6.0 | 8.0 | 15 | 1 | E0810/06X |
| 08 | 6.0 | 6.0 | 8.0 | 15 | 1 | E0810/06X |
| 10 | 8.0 | 8.0 | 10.0 | 15 | 1 | E10/08X |
| 12 | 8.0 | 8.0 | 12.0 | 15 | 2 | E12/08X |
| 12 | 9.0 | 9.0 | 12.0 | 15 | 2 | E12/09X |
| 12 | 10.0 | 10.0 | 12.0 | 15 | 2 | E1215/10X |
| 15 | 12.0 | 12.0 | 14.8 | 15 | 3 | E15/12X |
| 15 | 12.5 | 12.5 | 14.8 | 15 | 3 | E1516/12.5X |
| 16 | 12.5 | 12.5 | 14.8 | 15 | 3 | E1516/12.5X |
| 18 | 14.0 | 14.0 | 17.8 | 15 | 4 | E18/14X |
| 18 | 16.0 | 16.0 | 17.8 | 20 | 4 | E1820/16X |
| 20 | 16.0 | 16.0 | 17.8 | 20 | 4 | E1820/16X |
| 22 | 18.0 | 18.0 | 21.8 | 16 | 5 | E22/18X |

DOZ EO-2 Dichtring



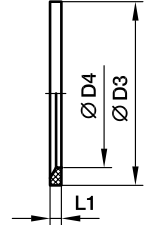
Montagerichtung:
Dichtlippe zeigt zum Rohrende

| Bau-Reihe | D1 | D2 | Gewicht g/1 St. | Bestellzeichen | | | |
|------------------|--------|------|--------------------|----------------|------------------|------------------|--------------------|
| | | | | Stahl NBR | Stahl FKM | Edelstahl FKM | Edelstahl NBR |
| LL ²⁾ | 04 | 6.8 | 1 | DOZ04LL | — | — | — |
| | 06 | 8.8 | 1 | DOZ06LL | — | — | — |
| L ³⁾ | 06 | 10.3 | 1 | DOZ06L | DOZ06LVIT | DOZ06L71 | DOZ06LNBR71 |
| | 08 | 12.3 | 1 | DOZ08L | DOZ08LVIT | DOZ08L71 | DOZ08LNBR71 |
| | 10 | 14.3 | 2 | DOZ10L | DOZ10LVIT | DOZ10L71 | DOZ10LNBR71 |
| | 12 | 16.3 | 2 | DOZ12L | DOZ12LVIT | DOZ12L71 | DOZ12LNBR71 |
| | 15 | 20.3 | 3 | DOZ15L | DOZ15LVIT | DOZ15L71 | DOZ15LNBR71 |
| | 18 | 24.3 | 5 | DOZ18L | DOZ18LVIT | DOZ18L71 | DOZ18LNBR71 |
| | 22 | 27.7 | 6 | DOZ22L | DOZ22LVIT | DOZ22L71 | DOZ22LNBR71 |
| | 28 | 33.7 | 7 | DOZ28L | DOZ28LVIT | DOZ28L71 | DOZ28LNBR71 |
| | 35 | 42.7 | 14 | DOZ35L | DOZ35LVIT | DOZ35L71 | DOZ35LNBR71 |
| | 42 | 49.7 | 17 | DOZ42L | DOZ42LVIT | DOZ42L71 | DOZ42LNBR71 |
| S ⁴⁾ | 06 | 12.3 | 2 | DOZ06S | DOZ06SVIT | DOZ06S71 | DOZ06SNBR71 |
| | 08 | 14.3 | 2 | DOZ08S | DOZ08SVIT | DOZ08S71 | DOZ08SNBR71 |
| | 10 | 16.3 | 3 | DOZ10S | DOZ10SVIT | DOZ10S71 | DOZ10SNBR71 |
| | 12 | 18.3 | 4 | DOZ12S | DOZ12SVIT | DOZ12S71 | DOZ12SNBR71 |
| | 14 | 20.3 | 4 | DOZ14S | DOZ14SVIT | DOZ14S71 | DOZ14SNBR71 |
| | 16 | 22.3 | 5 | DOZ16S | DOZ16SVIT | DOZ16S71 | DOZ16SNBR71 |
| | 20 | 27.7 | 9 | DOZ20S | DOZ20SVIT | DOZ20S71 | DOZ20SNBR71 |
| | 25 | 33.7 | 13 | DOZ25S | DOZ25SVIT | DOZ25S71 | DOZ25SNBR71 |
| | 30 | 39.7 | 18 | DOZ30S | DOZ30SVIT | DOZ30S71 | DOZ30SNBR71 |
| | 38 | 49.7 | 27 | DOZ38S | DOZ38SVIT | DOZ38S71 | DOZ38SNBR71 |

²⁾ LL = Sehr leichte Baureihe; ³⁾ L = Leichte Baureihe; ⁴⁾ S = Schwere Baureihe

ED Eolastic-Dichtring (für zyl. Rohrgewinde und metrisches zyl. Gew.)

Für Type: GE...ED, EGE...ED, EVGE...ED, EW...ED, EV...ED, ET...ED, EL...ED, VSTI...ED, RI...ED

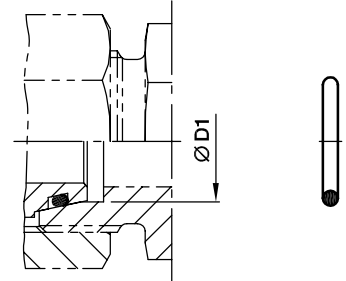


| Metrisches Gewinde zylindrisch T1 | Rohrgewinde zylindrisch T1 | D3 | D4 | L1 | Gewicht g/1 St. | Bestellzeichen NBR | Bestellzeichen FKM |
|-----------------------------------|----------------------------|------|------|-----|-----------------|--------------------|---------------------|
| M 08×1.0 | | 9.9 | 6.5 | 1.0 | 0.1 | ED8X1X | ED8X1VITX |
| M 10×1.0 | G 1/8 A | 11.9 | 8.4 | 1.0 | 0.1 | ED10X1X | ED10X1VITX |
| M 12×1.5 | | 14.4 | 9.8 | 1.5 | 0.2 | ED12X1.5X | ED12X1.5VITX |
| M 14×1.5 | G 1/4 A | 16.5 | 11.6 | 1.5 | 0.2 | ED14X1.5X | ED14X1.5VITX |
| M 16×1.5 | | 18.9 | 13.8 | 1.5 | 0.1 | ED16X1.5X | ED16X1.5VITX |
| | G 3/8 A | 18.9 | 14.7 | 1.5 | 0.2 | ED3/8X | ED3/8VITX |
| M 18×1.5 | | 20.9 | 15.7 | 1.5 | 0.1 | ED18X1.5X | ED18X1.5VITX |
| M 20×1.5 | | 22.9 | 17.8 | 1.5 | 0.2 | ED20X1.5X | ED20X1.5VITX |
| | G 1/2 A | 23.9 | 18.5 | 1.5 | 0.3 | ED1/2X | ED1/2VITX |
| M 22×1.5 | | 24.3 | 19.6 | 1.5 | 0.2 | ED22X1.5X | ED22X1.5VITX |
| M 26×1.5 | G 3/4 A | 29.2 | 23.9 | 1.5 | 0.4 | ED26X1.5X | ED26X1.5VITX |
| M 27×2.0 | G 3/4 A | 29.2 | 23.9 | 1.5 | 0.4 | ED26X1.5X | ED26X1.5VITX |
| M 33×2.0 | G 1 A | 35.7 | 29.7 | 2.0 | 0.7 | ED33X2X | ED33X2VITX |
| M 42×2.0 | G 1 1/4 A | 45.8 | 38.8 | 2.0 | 0.9 | ED42X2X | ED42X2VITX |
| M 48×2.0 | G 1 1/2 A | 50.7 | 44.7 | 2.0 | 1.0 | ED48X2X | ED48X2VITX |

OR O-Ringe für Verschraubungen mit EO 24° DKO Dichtkegel

Für Type:

DA, EGE, EGEO, MAVe, EW, EV, ET, EL, RED, GZ, GZR, VKA, VKAM

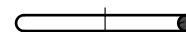
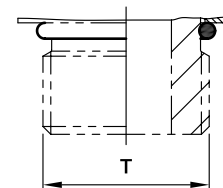


| Baueihe | D1 | O-Ring NBR Shore-Härte ca. 90 | O-Ring FKM Shore-Härte ca. 90 |
|-----------------|--------|----------------------------------|----------------------------------|
| L ³⁾ | 6 | OR4.5X1.5X | OR4.5X1.5VITX |
| | 8 | OR6.5X1.5X | OR6.5X1.5VITX |
| | 10 | OR8.5X1.5X | OR8X1.5VITX |
| | 12 | OR10.5X1.5X | OR10X1.5VITX |
| | 15 | OR12.5X2X | OR12X2VITX |
| | 18 | OR16X2X | OR15X2VITX |
| | 22 | OR20X2X | OR20X2VITX |
| | 28 | OR26X2X | OR26X2VITX |
| | 35 | OR32X2.5X | OR32X2.5VITX |
| | 42 | OR39X2.5X | OR38X2.5VITX |
| S ⁴⁾ | 6 | OR4.5X1.5X | OR4.5X1.5VITX |
| | 8 | OR6.5X1.5X | OR6.5X1.5VITX |
| | 10 | OR8.5X1.5X | OR8X1.5VITX |
| | 12 | OR10.5X1.5X | OR10X1.5VITX |
| | 14 | OR12X2X | OR12X2VITX |
| | 16 | OR14X2X | OR13X2VITX |
| | 20 | OR17X2.5X | OR16.3X2.4VITX |
| | 25 | OR22X2.5X | OR20.3X2.4VITX |
| | 30 | OR27X2.5X | OR25.3X2.4VITX |
| | 38 | OR35X2.5X | OR33.3X2.4VITX |

³⁾ L = Leichte Baureihe; ⁴⁾ S = Schwere Baureihe

OR O-Ringe für Einschraubzapfen

Metr. Einschraubzapfen – O-Ring (ISO 6149)
 UN/UNF Einschraubzapfen – O-Ring (ISO 11926)



Typen mit metr. Gewinde:
 VSTI-OR, GEO, EGEO

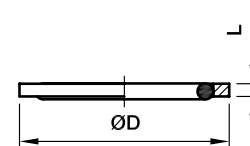
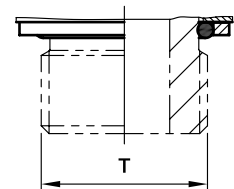
| Gewinde T | O-Ring NBR | O-Ring FKM |
|--------------|-------------------|-----------------------|
| M 08×1.0 | OR6.1X1.6 | OR6.1X1.6VITX |
| M 10×1.0 | OR8.1X1.6 | OR8.1X1.6VITX |
| M 12×1.5 | OR9.3X2.2 | OR9.3X2.2VITX |
| M 14×1.5 | OR11.3X2.2 | OR11.3X2.2VITX |
| M 16×1.5 | OR13.3X2.2 | OR13.3X2.2VITX |
| M 18×1.5 | OR15.3X2.2 | OR15.3X2.2VITX |
| M 22×1.5 | OR19.3X2.2 | OR19.3X2.2VITX |
| M 27×2.0 | OR23.6X2.9 | OR23.6X2.9VITX |
| M 33×2.0 | OR29.6X2.9 | OR29.6X2.9VITX |
| M 42×2.0 | OR38.6X2.9 | OR38.6X2.9VITX |
| M 48×2.0 | OR44.6X2.9 | OR44.6X2.9VITX |

Typen mit UN/UNF Gewinde:
 GE-UNF

| Gewinde T | O-Ring NBR | O-Ring FKM |
|--------------|---------------------|-------------------------|
| 7/16-20 UNF | OR8.92X1.83 | OR8.92X1.83VITX |
| 9/16-18 UNF | OR11.89X1.98 | OR11.89X1.98VITX |
| 3/4-16 UNF | OR16.36X2.21 | OR16.36X2.21VITX |
| 7/8-14 UNF | OR19.18X2.46 | OR19X2.5VITX |
| 1 1/16-12 UN | OR23.47X2.95 | OR23.47X2.95VITX |
| 1 5/16-12 UN | OR29.74X2.95 | OR29.74X2.95VITX |
| 1 5/8-12 UN | OR37.46X3 | OR37.46X3VITX |
| 1 7/8-12 UN | OR43.69X3 | OR43.69X3VITX |

OR O-Ringe und Kammerringe für Einschraubzapfen

Zöll. Einschraubzapfen, einstellbar – O-Ring + Kammerring (ISO 1179)



Typen mit zöll. Gewinde: WEE-R

| Gewinde T | O-Ring NBR | Stahl | | | O-Ring FKM | Edelstahl | | |
|--------------|----------------------|-------|-----|------------------------------------|-------------------------|-----------|-----|---|
| | | D | L | Bestellzeichen Kammerring CF | | D | L | Bestellzeichen Kammerring Edelstahl |
| G 1/8 A | OR8X1.88X | 14.8 | 1.4 | RRS1/8CF | wie bei Stahl | 15.0 | 1.4 | 8207SS1/8 |
| G 1/4 A | OR10.77X2.62X | 19.8 | 1.9 | RRS1/4CF | OR10.77X2.62VITX | 19.5 | 1.9 | 8207SS1/4A |
| G 3/8 A | OR13.94X2.62X | 22.8 | 2.0 | RRS3/8CF | wie bei Stahl | 23.5 | 1.9 | 8207SS3/8A |
| G 1/2 A | OR18X3.15X | 27.8 | 2.6 | RRS1/2CF | OR17.96X2.62VITX | 28.5 | 1.9 | 8207SS1/2 |
| G 3/4 A | OR23X3X | 32.8 | 2.5 | RRS3/4CF | OR23.47X2.62VITX | 34.5 | 1.9 | 8207SS3/4 |
| G 1 A | OR29.74X3.53X | 40.8 | 2.5 | RRS1CF | wie bei Stahl | 43.5 | 2.6 | 8207SS1A |
| G 1 1/4 A | OR37.69X3.53X | 50.8 | 2.6 | RRS11/4CF | wie bei Stahl | 52.5 | 2.6 | 8207SS11/4 |
| G 1 1/2 A | OR44.04X3.53X | 55.8 | 2.6 | RRS11/2CF | wie bei Stahl | 60.0 | 2.6 | 8207SS11/2 |

| Bestellzeichen-Ergänzungen | |
|----------------------------|------------------|
| Material | Beispiel |
| NBR | OR10.77X2.62X |
| FKM | OR10.77X2.62VITX |

OR O-Ringe für Schwenkverschraubungen WH/TH

| Für WH / TH | Für WH / TH | O-Ring NBR | O-Ring FKM |
|----------------|----------------|--------------------|-----------------------|
| 06LM/LR | | OR9.3X1.5X | OR9.3X1.5VITX |
| 08LM/LR | 06SM/SR | OR12.5X1.5X | OR12.5X1.5VITX |
| 10LM/LR | 08SM/SR | OR12.5X1.5X | OR12.5X1.5VITX |
| 12LM/LR | 10SM/SR | OR16X1.5X | OR16X1.5VITX |
| | 12SR | OR16X1.5X | OR16X1.5VITX |
| 15LM | 12SM | OR18X1.5X | OR18X1.5VITX |
| 15LR | 14SM/SR | OR20X1.5X | OR20X1.5VITX |
| 18LM/LR | 16SM/SR | OR20X1.5X | OR20X1.5VITX |
| 22LM/LR | 20SM/SR | OR25X2X | OR25X2VITX |
| 28LM/LR | 25SM/SR | OR33X2.5X | OR33X2.5VITX |
| 35LM/LR | 30SM/SR | OR41X2.5X | OR41X2.5VITX |
| 42LM/LR | 38SM/SR | OR46X3X | OR46X3VITX |

OR O-Ringe für Schwenkverschraubungen SWVE..M/R KDSOMD

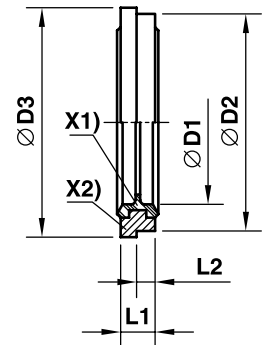
| Für SWVE..M/R KDSOMD | O-Ring NBR |
|---|----------------------|
| 04LLR/- 06LLR/LLM 08LLR/LLM 06LR/LM | OR9X1.2X |
| 08LM 06SM | OR10X1.5X |
| 08LR 06SR 10LR/LM 08SR/LM | OR12.5X1.5X |
| 12LR/LM 10SR/LM 12SR | OR15X1.5X |
| 15LM 12SM | OR16X1.5X |
| 15LR 14SR/- | OR19X1.5X |
| 18LR/LM 16SR/SM | OR20X1.5X |
| 22LR/LM 20SR/SM | OR25.12X1.78X |
| 28LR/LM 25SR/SM | OR33X2.5X |
| 35LR/LM 30SR/SM | OR41X2.5X |
| 42LR/LM 38SR/SM | OR46X3.0X |

DKI Dichtkantenring für Manometer-Anschlussverschraubungen

| Innen- gewinde | D1 | D2 | L1 | Gewicht g/1 St. | Bestellzeichen | |
|-------------------|----|------|-----|--------------------|------------------|------------------|
| | | | | | Stahl CF | Edelstahl 71 |
| G 1/4 | 6 | 11.3 | 4.5 | 2.5 | DKI1/4CFX | DKI1/471X |
| G 1/2 | 12 | 18.5 | 5.0 | 5.0 | DKI1/2CFX | DKI1/271X |

KDS Dichtring für Schwenkverschraubungen SWVE, WH und TH aus Stahl

für Einschraublöcher mit schmaler oder breiter Eindrehung

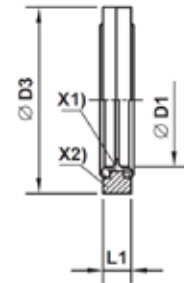


X1) NBR-Dichtung
X2) Kammerring (Stahl)

| Metrisches Gewinde zylindrisch | Rohrgewinde zylindrisch | D1 | D2 | D3 | L1 | L2 | Gewicht g/1 St. | Bestellzeichen |
|--------------------------------|-------------------------|------|------|------|-----|-----|-----------------|----------------|
| | | | | | | | | Stahl/NBR |
| M 10×1.0 | G 1/8 A | 10.3 | 14.9 | 16.0 | 2.5 | 1.1 | 2 | KDS10X |
| M 12×1.5 | | 12.3 | 17.0 | 18.0 | 3.0 | 1.6 | 2 | KDS12X |
| M 14×1.5 | G 1/4 A | 14.3 | 18.9 | 20.0 | 3.0 | 1.6 | 2 | KDS14X |
| M 16×1.5 | G 3/8 A | 17.0 | 21.9 | 24.0 | 3.0 | 2.1 | 3 | KDS16X |
| M 18×1.5 | | 18.3 | 23.9 | 23.9 | 3.0 | | 4 | KDS18X |
| M 22×1.5 | G 1/2 A | 22.3 | 26.9 | 30.0 | 4.5 | 2.6 | 7 | KDS22X |
| M 26×1.5 | | 26.3 | 31.9 | 35.0 | 3.5 | 2.6 | 7 | KDS26X |
| M 27×2.0 | G 3/4 A | 27.3 | 32.9 | 38.0 | 3.5 | 2.6 | 8 | KDS27X |
| M 33×2.0 | G 1 A | 33.6 | 39.9 | 42.0 | 3.5 | 2.6 | 10 | KDS33X |
| M 42×2.0 | G 1 1/4 A | 42.4 | 49.9 | 49.9 | 3.5 | | 12 | KDS42X |
| M 48×2.0 | G 1 1/2 A | 48.4 | 55.9 | 60.0 | 3.5 | 2.6 | 16 | KDS48X |

KD Dichtring für Schwenkverschraubungen WH/TH aus Edelstahl

für Einschraublöcher mit breiter Eindrehung

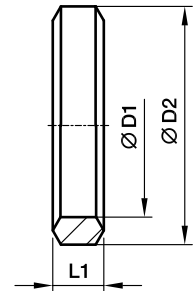


X1) Vulkanisierte FKM Dichtung
X2) Kammerring (Edelstahl 316L)

| Metr. Gewinde zylindrisch | Rohrgewinde zylindrisch | D1 | D3 | L1 | Gewicht g/1 St. | Bestellzeichen Edelstahl FKM |
|------------------------------|----------------------------|------|------|-----|--------------------|------------------------------------|
| M 10×1.0 | G 1/8 A | 10.3 | 17.0 | 2.5 | 3 | KD10-1/8SS |
| M 12×1.5 | | 12.3 | 22.0 | 3.0 | 5 | KD12SS |
| M 14×1.5 | G 1/4 A | 14.3 | 22.0 | 3.0 | 5 | KD14-1/4SS |
| M 16×1.5 | G 3/8 A | 17.0 | 27.0 | 3.0 | 6 | KD16-3/8SS |
| M 18×1.5 | | 18.3 | 29.0 | 3.0 | 8 | KD18SS |
| M 22×1.5 | G 1/2 A | 22.3 | 32.0 | 4.5 | 12 | KD22-1/2SS |
| M 26×1.5 | | 26.3 | 41.0 | 3.5 | 18 | KD26SS |
| M 27×2.0 | G 3/4 A | 27.3 | 41.0 | 3.5 | 19 | KD27-3/4SS |
| M 33×2.0 | G 1 A | 33.6 | 46.0 | 3.5 | 18 | KD33-1SS |
| M 42×2.0 | G 1 1/4 A | 42.4 | 57.0 | 3.5 | 26 | KD42-11/4SS |
| M 48×2.0 | G 1 1/2 A | 48.4 | 64.0 | 3.5 | 35 | KD48-11/2SS |

DKAZ Dichtkantenring

für Schwenkverschraubungen DSVW

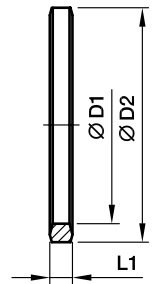


| Für DSVW | | Metr. Gewinde zylindrisch | D1 | D2 | L1 | Gewicht g/1 St. | Bestellzeichen Stahl CF |
|----------|------|------------------------------|------|----|-----|--------------------|-------------------------------|
| 06LM | | M 10×1.0 | 10.1 | 14 | 3.2 | 2 | DKAZ10CFX |
| 08LM | 06SM | M 12×1.5 | 12.1 | 17 | 4.2 | 3 | DKAZ12CFX |
| 10LM | 08SM | M 14×1.5 | 14.1 | 19 | 4.5 | 4 | DKAZ14CFX |
| 12LM | 10SM | M 16×1.5 | 16.1 | 21 | 4.5 | 4 | DKAZ16CFX |
| 15LM | 12SM | M 18×1.5 | 18.1 | 23 | 4.5 | 5 | DKAZ18CFX |
| | 14SM | M 20×1.5 | 20.1 | 25 | 4.5 | 5 | DKAZ20CFX |
| 18LM | 16SM | M 22×1.5 | 22.1 | 27 | 4.5 | 6 | DKAZ22CFX |
| 22LM | | M 26×1.5 | 26.1 | 31 | 4.5 | 7 | DKAZ26CFX |
| | 20SM | M 27×2.0 | 27.1 | 32 | 5.0 | 8 | DKAZ27CFX |
| 28LM | 25SM | M 33×2.0 | 33.1 | 39 | 6.0 | 15 | DKAZ33CFX |
| 35LM | 30SM | M 42×2.0 | 42.1 | 49 | 6.5 | 22 | DKAZ11/4CFX |
| 42LM | 38SM | M 48×2.0 | 48.1 | 55 | 6.5 | 25 | DKAZ11/2CFX |

| Für DSVW | | Rohrgewinde zylindrisch | D1 | D2 | L1 | Gewicht g/1 St. | Bestellzeichen Stahl CF |
|-----------|-----------|----------------------------|------|----|-----|--------------------|-------------------------------|
| 06LR | | G 1/8 A | 9.8 | 14 | 3.2 | 2 | DKAZ1/8CFX |
| 08LR/10LR | 06SR/08SR | G 1/4 A | 13.3 | 18 | 4.5 | 4 | DKAZ1/4CFX |
| 12LR | 10SR/12SR | G 3/8 A | 16.8 | 22 | 4.5 | 5 | DKAZ3/8CFX |
| 15LR/18LR | 14SR/16SR | G 1/2 A | 21.1 | 26 | 5.0 | 6 | DKAZ1/2CFX |
| 22LR | 20SR | G 3/4 A | 26.6 | 32 | 5.0 | 11 | DKAZ3/4CFX |
| 28LR | 25SR | G 1 A | 33.4 | 39 | 6.0 | 14 | DKAZ1CFX |
| 35LR | 30SR | G 1 1/4 A | 42.1 | 49 | 6.5 | 22 | DKAZ11/4CFX |
| 42LR | 38SR | G 1 1/2 A | 48.1 | 55 | 6.5 | 25 | DKAZ11/2CFX |

DKA Dichtkantenring

für Schwenkverschraubungen SWVE, WH und TH



| Rohrgewinde zylindrisch | D1 | D2 | L1 | Gewicht g/1 St. | Bestellzeichen | |
|----------------------------|------|----|-----|--------------------|----------------------|----------------------|
| | | | | | Stahl CF | Edelstahl 71 |
| G 1/8 A | 9.8 | 14 | 2.5 | 1 | DKA1/8CFX | DKA1/871X |
| G 1/4 A | 13.3 | 18 | 3.0 | 3 | DKA1/4CFX | DKA1/471X |
| G 3/8 A | 16.8 | 22 | 3.0 | 3 | DKA3/8CFX | DKA3/871X |
| G 1/2 A | 21.1 | 26 | 4.5 | 6 | DKA1/2X4.5CFX | DKA1/2X4.571X |
| G 3/4 A | 26.6 | 32 | 3.5 | 6 | DKA3/4CFX | DKA3/471X |
| G 1 A | 33.4 | 39 | 3.5 | 8 | DKA1CFX | DKA171X |
| G 1 1/4 A | 42.1 | 49 | 3.5 | 12 | DKA11/4CFX | DKA11/471X |
| G 1 1/2 A | 48.1 | 55 | 3.5 | 15 | DKA11/2CFX | DKA11/271X |

| Metr. Gewinde zylindrisch | D1 | D2 | L1 | Gewicht g/1 St. | Bestellzeichen | |
|------------------------------|------|----|-----|--------------------|---------------------|---------------------|
| | | | | | Stahl CF | Edelstahl 71 |
| M 08×1.0 | 8.1 | 12 | 2.5 | 1 | DKA08CFX | |
| M 10×1.0 | 10.1 | 14 | 3.0 | 1 | DKA10CFX | DKA1071X |
| M 12×1.5 | 12.1 | 17 | 3.0 | 2 | DKA12CFX | DKA1271X |
| M 14×1.5 | 14.1 | 19 | 3.0 | 3 | DKA14CFX | DKA1471X |
| M 16×1.5 | 16.1 | 21 | 3.0 | 3 | DKA16CFX | DKA1671X |
| M 18×1.5 | 18.1 | 23 | 3.0 | 3 | DKA18CFX | DKA1871X |
| M 20×1.5 | 20.1 | 25 | 3.0 | 4 | DKA20CFX | DKA2071X |
| M 22×1.5 | 22.1 | 27 | 4.5 | 6 | DKA22X4.5CFX | DKA22X4.571X |
| M 26×1.5 | 26.1 | 31 | 3.5 | 6 | DKA26X3.5CFX | DKA26X3.571X |
| M 27×2.0 | 27.1 | 32 | 3.5 | 6 | DKA27CFX | DKA2771X |
| M 33×2.0 | 33.1 | 39 | 3.5 | 8 | DKA33CFX | DKA3371X |
| M 42×2.0 | 42.1 | 49 | 3.5 | 12 | DKA11/4CFX | DKA11/471X |
| M 48×2.0 | 48.1 | 55 | 3.5 | 15 | DKA11/2CFX | DKA11/271X |