



New LF 3000 16 mm

An Even More Extensive Range

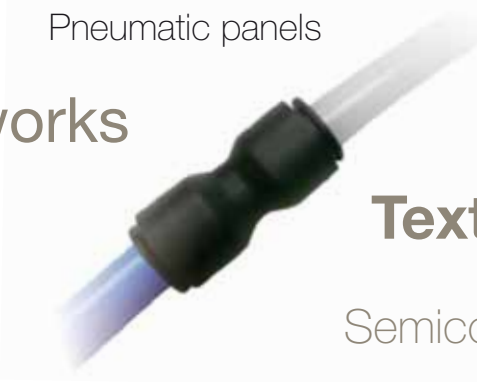
aerospace
climate control
electromechanical
filtration
fluid & gas handling
hydraulics
pneumatics
process control
sealing & shielding



ENGINEERING YOUR SUCCESS.



16 mm DIAMETER LF 3000 INSTANT FITTINGS AND TUBING



Pneumatic panels

Vacuum networks

Robotics

Textile machinery

Packaging equipment / machines

Semiconductor equipment

All compressed air circuits

An Even More Extensive Range

- An additional, bigger diameter for a more versatile range
- Adapted to the most modern machinery, composed of independent modules


All the Advantages of the LF 3000 Range

- Instant connection and disconnection
- Performance and reliability
- Lightweight
- Compact
- Vacuum capability
- Aesthetic design

A Dedicated Range of Tubing in 16 mm Diameter

- The best fitting/tubing trade-off on the market
- Polyamide tubing: provides optimum mechanical properties and chemical resistance
- Polyurethane tubing: extremely flexible, allowing compact cabling where a small bend radius is required

> Technical Characteristics



All items in the LF 3000 range are guaranteed silicone-free

	Fittings	PA & PU Tubing
Suitable Fluids	Compressed air	Compressed air (for other fluids, please contact us)
Working Pressure	up to 20 bar (at 20°C)	up to 12/13 bar (at 20°C)
Working Temperature	-20°C to +80°C	-15°C to +70°C for PU tubing -40°C to +80°C for PA tubing
Vacuum	99% (755 mm Hg)	99% (755 mm Hg)

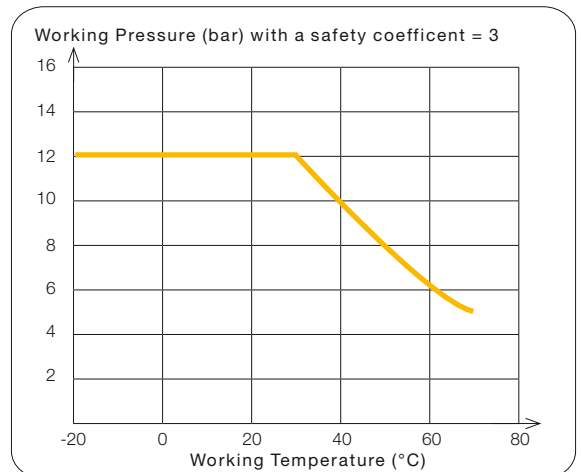
> Tubing Performances

Polyurethane Tubing Performances

ØD (mm)		Wall Thickness (mm)		Max. Ovality (mm)	Min. Bend Radius @ +23°C (mm)
ext.	Tolerances	e	Tolerances		
16	± 0.15	2.5 max.	+ 0.15 - 0.07	0.3	45 Max flow: 88

Safety coefficient= x3 to obtain burst pressure

Close tolerance to perfect sealing according to the NF E49-101 standard

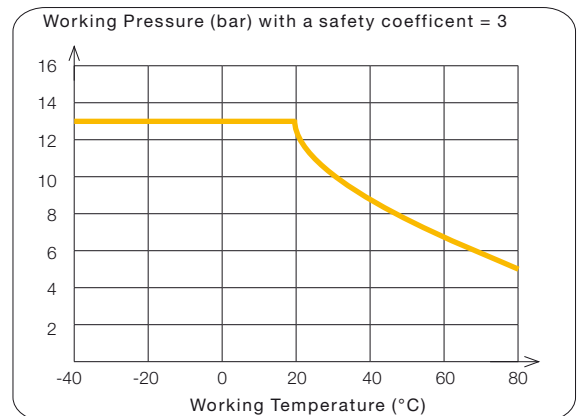


Polyamide Tubing Performances

ØD (mm)		Wall Thickness (mm)		Max. Ovality (mm)	Min. Bend Radius @ +23°C (mm)
ext.	Tolerances	e	Tolerances		
16	+ 0.05 - 0.10	1.5	± 0.08	0.28	115

Safety coefficient= x3 to obtain burst pressure

Close tolerance to perfect sealing according to the NF E49-100 standard



> Regulations

Products are manufactured from materials without any hazardous or prohibited substances.

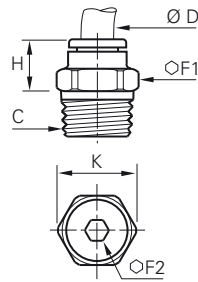
New Machinery directive 2006/42/EC: our products comply with this directive to guarantee safe use and security of equipment.

The LF 3000 range also meets the latest international standard ISO 14743 - for instant fittings used in conjunction with thermoplastic tubes.



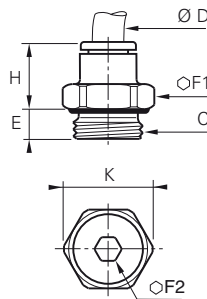
> Threaded Fittings

3175 Male stud fitting, hexagonal, BSPT thread



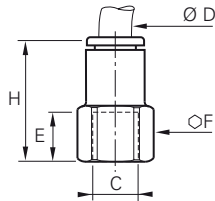
ØD	C		F1	F2	H	K	
16	R3/8	3175 16 17	27	9	32,5	29	0,069
16	R1/2	3175 16 21	27	12	32,5	29	0,079

3101 Male stud fitting, hexagonal, BSPP thread



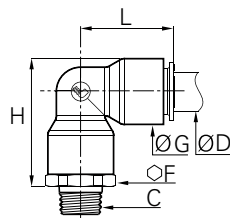
ØD	C		E	F1	F2	H	K	
16	G3/8	3101 16 17	7,5	27	9	32,5	29	0,061
16	G1/2	3101 16 21	9	27	12	32,5	29	0,066

3114 Female stud fitting, BSPP thread



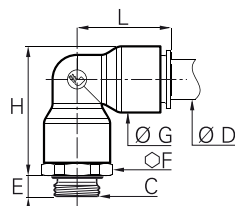
ØD	C		E	F	H	
16	G1/2	3114 16 21	15	27	49	0,101

3109 Male stud elbow, BSPT thread



ØD	C		F	G	H	L	
16	R3/8	3109 16 17	27	27	53	39	0,106
16	R1/2	3109 16 21	27	27	53	39	0,104

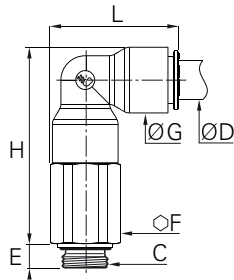
3199 Male stud elbow, BSPP thread



ØD	C		E	F	G	H	L	
16	G3/8	3199 16 17	7,5	27	27	54,5	39	0,101
16	G1/2	3199 16 21	9	27	27	54,5	39	0,097

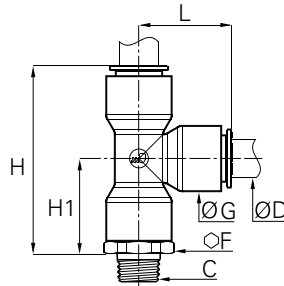
> Threaded Fittings

3169 Extended male stud elbow, BSPP thread



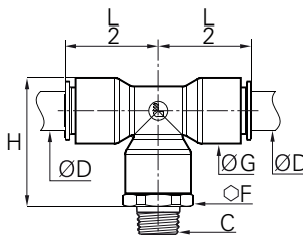
ØD	C		E	F	G	H	L	
16	G3/8	3169 16 17	7,5	27	27	82,5	52	0,220
16	G1/2	3169 16 21	9	27	27	82,5	52	0,206

3103 Male stud run tee, BSPT thread



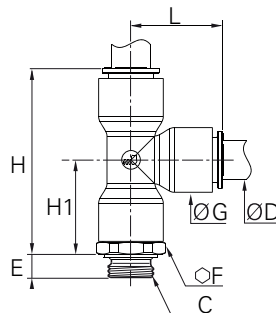
ØD	C		F	G	H	H1	L	
16	R3/8	3103 16 17	27	27	78	39,5	38,5	0,126
16	R1/2	3103 16 21	27	27	78	39,5	38,5	0,124

3108 Male stud branch tee, BSPT thread



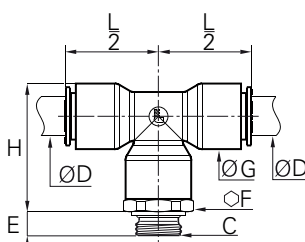
ØD	C		F	G	H	$\frac{L}{2}$	
16	R3/8	3108 16 17	27	27	53	38,5	0,128
16	R1/2	3108 16 21	27	27	53	38,5	0,124

3193 Male stud run tee, BSPP thread



ØD	C		E	F	G	H	H1	L	
16	G3/8	3193 16 17	7,5	27	27	79,5	41	38,5	0,121
16	G1/2	3193 16 21	9	27	27	79,5	41	38,5	0,117

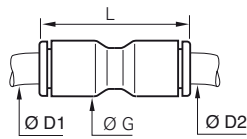
3198 Male stud branch run tee, BSPP thread



ØD	C		E	F	G	H	$\frac{L}{2}$	
16	G3/8	3198 16 17	7,5	27	27	54,5	38,5	0,121
16	G1/2	3198 16 21	9	27	27	54,5	38,5	0,117

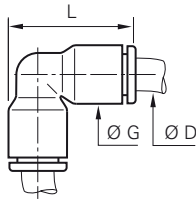
> Tube-to-Tube Fittings

3106 Equal and unequal tube/tube connector



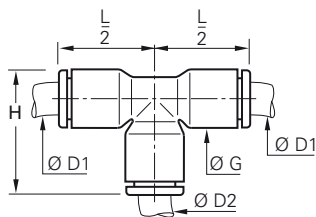
ØD1	ØD2		G	L	
16	16	3106 16 00	27	60,5	0,041
16	12	3106 12 16	27	61	0,066

3102 Equal elbow



ØD		G	L	
16	3102 16 00	27	52	0,043

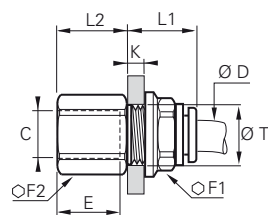
3104 Equal and unequal tee



ØD1	ØD2		G	H	$\frac{L}{2}$	
16	16	3104 16 00	27	52	39	0,063
16	12	3104 16 12	27	52,5	39	0,088

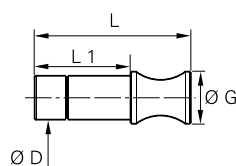
> Fittings and Accessories

3136 Female bulkhead connector, BSPP thread



ØD	C		E	F1	F2	K _{max}	L1	L2	T _{mini}	
16	G3/8	3136 16 17	12	29	29	10,5	30	15	27,5	0,135
16	G1/2	3136 16 21	15	29	29	10,5	30	19,5	27,5	0,141





3126 Blanking plugs




ØD		G	L	L1	
16	3126 16 00	19	57	35	0,063

> Technical Tubing






Polyurethane polyester tubing

O.D. Tube (mm)	I.D. Tube (mm)	Minimum bend radius for tube at ambient temp. (mm)	Length (m)				
16	11	45	25	1025U16 01 11	1025U16 02 11	1025U16 03 11	1025U16 04 11
16	11	45	100	1100U16 01 11	1100U16 02 11	1100U16 03 11	1100U16 04 11

Polyurethane polyether tubing

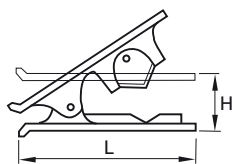
O.D. Tube (mm)	I.D. Tube (mm)	Minimum bend radius for tube at ambient temp. (mm)	Length (m)	
16	11	45	25	1025U16R08 11
16	11	45	100	1100U16R08 11



Polyamide tubing

O.D. Tube (mm)	I.D. Tube (mm)	Minimum bend radius for tube at ambient temp. (mm)	Length (m)					
16	13	115	25	1025P16 00 13	1025P16 01 13	1025P16 02 13	1025P16 03 13	1025P16 04 13
16	13	115	100	1100P16 00 13	1100P16 01 13	1100P16 02 13	1100P16 03 13	1100P16 04 13

> Related Products

3000 71 00 Tube Cutter



	H	L	
3000 71 00	25	79	0,029

This tool is designed to give a clean cut at right angles to the tube axis and will cut all resilient plastic tubes (polyamide, polyurethane, etc....), from 4 mm to 16 mm diameters inclusive.

A spring maintains the cutter in the closed position.

Replacement blades are available: part number **3000 71 00 05**.



Parker Legris has a continuous product development policy and therefore reserves the right to modify products shown in this catalogue. Please treat all dimensions therefore as indicative.

Parker Legris Connectic offers a comprehensive range of connection solutions; please consult our general catalogue or visit www.legris.com or www.parkerconnectic.com.

Parker Worldwide

Europe, Middle East, Africa

AE – United Arab Emirates,
Dubai

Tel: +971 4 8127100
parker.me@parker.com

AT – Austria, Wiener Neustadt

Tel: +43 (0)2622 23501-0
parker.austria@parker.com

AT – Eastern Europe, Wiener
Neustadt

Tel: +43 (0)2622 23501 900
parker.easteurope@parker.com

AZ – Azerbaijan, Baku

Tel: +994 50 2233 458
parker.azerbaijan@parker.com

BE/LU – Belgium, Nivelles

Tel: +32 (0)67 280 900
parker.belgium@parker.com

BY – Belarus, Minsk

Tel: +375 17 209 9399
parker.belarus@parker.com

CH – Switzerland, Etoy

Tel: +41 (0)21 821 87 00
parker.switzerland@parker.com

CZ – Czech Republic, Klecany

Tel: +420 284 083 111
parker.czechrepublic@parker.com

DE – Germany, Kaarst

Tel: +49 (0)2131 4016 0
parker.germany@parker.com

DK – Denmark, Ballerup

Tel: +45 43 56 04 00
parker.denmark@parker.com

ES – Spain, Madrid

Tel: +34 902 330 001
parker.spain@parker.com

FI – Finland, Vantaa

Tel: +358 (0)20 753 2500
parker.finland@parker.com

FR – France, Contamine s/Arve

Tel: +33 (0)4 50 25 80 25
parker.france@parker.com

GR – Greece, Athens

Tel: +30 210 933 6450
parker.greece@parker.com

HU – Hungary, Budapest

Tel: +36 1 220 4155
parker.hungary@parker.com

IE – Ireland, Dublin

Tel: +353 (0)1 466 6370
parker.ireland@parker.com

IT – Italy, Corsico (MI)

Tel: +39 02 45 19 21
parker.italy@parker.com

KZ – Kazakhstan, Almaty

Tel: +7 7272 505 800
parker.easteurope@parker.com

NL – The Netherlands, Oldenzaal

Tel: +31 (0)541 585 000
parker.nl@parker.com

NO – Norway, Asker

Tel: +47 66 75 34 00
parker.norway@parker.com

PL – Poland, Warsaw

Tel: +48 (0)22 573 24 00
parker.poland@parker.com

PT – Portugal, Leca da Palmeira

Tel: +351 22 999 7360
parker.portugal@parker.com

RO – Romania, Bucharest

Tel: +40 21 252 1382
parker.romania@parker.com

RU – Russia, Moscow

Tel: +7 495 645-2156
parker.russia@parker.com

SE – Sweden, Spånga

Tel: +46 (0)8 59 79 50 00
parker.sweden@parker.com

SK – Slovakia, Banská Bystrica

Tel: +421 484 162 252
parker.slovakia@parker.com

SL – Slovenia, Novo Mesto

Tel: +386 7 337 6650
parker.slovenia@parker.com

TR – Turkey, Istanbul

Tel: +90 216 4997081
parker.turkey@parker.com

UA – Ukraine, Kiev

Tel: +380 44 494 2731
parker.ukraine@parker.com

UK – United Kingdom, Warwick

Tel: +44 (0)1926 317 878
parker.uk@parker.com

ZA – South Africa, Kempton Park

Tel: +27 (0)11 961 0700
parker.southafrica@parker.com

North America

CA – Canada, Milton, Ontario

Tel: +1 905 693 3000

US – USA, Cleveland

Tel: +1 216 896 3000

Asia Pacific

AU – Australia, Castle Hill

Tel: +61 (0)2-9634 7777

CN – China, Shanghai

Tel: +86 21 2899 5000

HK – Hong Kong

Tel: +852 2428 8008

IN – India, Gurgaon

Tel: +91 124 459 0600
legris.india@parker.com

JP – Japan, Tokyo

Tel: +81 (0)3 6408 3901

KR – South Korea, Seoul

Tel: +82 2 559 0400

MY – Malaysia, Shah Alam

Tel: +60 3 7849 0800

NZ – New Zealand, Mt Wellington

Tel: +64 9 574 1744

SG – Singapore

Tel: +65 6887 6300

TH – Thailand, Bangkok

Tel: +662 717 8140

TW – Taiwan, Taipei

Tel: +886 2 2298 8987

South America

AR – Argentina, Buenos Aires

Tel: +54 3327 44 4129

BR – Brazil, Sao Jose dos Campos

Tel: +55 800 727 5374

CL – Chile, Santiago

Tel: +56 2 623 1216

MX – Mexico, Apodaca

Tel: +52 81 8156 6000

